

FINISH SCHEDULE					
ROOM NAME	FLOOR	BASE	WALL	CEILING	
(100) DINING ROOM	T200 12" X 24" TILE	T109 6" X 48" TILE	P103, P104 T109 W102 WALL COVERING	C1 2' X 2' ARMSTRONG, SEPIA #PN81311 C3 GYP BOARD W/ PAINT P103	09-16-16
(101) SERVING AREA	QT 8" X 8" CONT. QUARRY TILE QT1 IN HIGH TRAFFIC AREAS	QT2 6" X 12" CONT. 3/4" RAD. MIN (KITCHEN EQUIPMENT ON 6" NSF APPROVED LEGS)	T109 TILE WP1 FRP PANEL	C3 GYP BOARD W/P205 SMOOTH WASHABLE PAINT	
(102) DRIVE-THRU STATION	QT 8" X 8" CONT. QUARRY TILE QT1 IN HIGH TRAFFIC AREAS	QT2 6" X 12" CONT. 3/4" RAD. MIN (KITCHEN EQUIPMENT ON 6" NSF APPROVED LEGS)	WP1 FRP PANEL	C2 2' X 4' SUSPENDED GRID WASHABLE VINYL COATED GYP BOARD PANELS	
(103) KITCHEN	QT 8" X 8" CONT. QUARRY TILE QT1 IN HIGH TRAFFIC AREAS	QT2 6" X 12" CONT. 3/4" RAD. MIN (KITCHEN EQUIPMENT ON 6" NSF APPROVED LEGS)	WP3 S.S. BEHIND COOK LINE WP1 FRP PANEL	C2 2' X 4' SUSPENDED GRID WASHABLE VINYL COATED GYP BOARD PANELS	
(104) KITCHEN PREP.	QT 8" X 8" CONT. QUARRY TILE QT1 IN HIGH TRAFFIC AREAS	QT2 6" X 12" CONT. 3/4" RAD. MIN (KITCHEN EQUIPMENT ON 6" NSF APPROVED LEGS)	WP1 FRP PANEL	C2 2' X 4' SUSPENDED GRID WASHABLE VINYL COATED GYP BOARD PANELS	
(105) WALK-IN COOLER	QT 8" X 8" CONT. QUARRY TILE QT1 IN HIGH TRAFFIC AREAS	S.S. / ALUMINUM WITH 3/8" RADIUS	EXT S.S. INT ALUMINUM GALVANIZED S.S.	ALUMINUM GALVANIZED STAINLESS STEEL	
(105A) WALK-IN FREEZER	QT 8" X 8" CONT. QUARRY TILE UNDER WIF SUBFLOOR	S.S. / ALUMINUM WITH 3/8" RADIUS	EXT S.S. INT ALUMINUM GALVANIZED S.S.	ALUMINUM GALVANIZED STAINLESS STEEL	
(106) MEN'S ROOM	T200 12" X 24" TILE	SCHLUTER	T108 TILE	C3 GYP BOARD W/ P101 SMOOTH WASHABLE PAINT	
(107) WOMEN'S ROOM	T200 12" X 24" TILE	SCHLUTER	T108 TILE	C3 GYP BOARD W/ P101 SMOOTH WASHABLE PAINT	
(108) VESTIBULE	T200 12" X 24" TILE	T109 6" X 48" TILE	P104 PAINT GYP BOARD T109 TILE	C3 GYP BOARD W/ P101 SMOOTH WASHABLE PAINT	
(109) STORAGE ROOM	T200 12" X 24" TILE	T109 6" X 48" TILE	WP1 FRP PANEL	C3 GYP BOARD W/ P101 SMOOTH WASHABLE PAINT	
(110) NOT USED	-	-	-	-	

DOOR SCHEDULE									
NO.	DOOR MATERIAL	SIZE	FRAME	FACE/EDGE	THK.	CORE	LITE	RATE	HDW
(D1)	ALUMINUM STOREFRONT	3'-6" X 8'-0"	ALUMINUM	BLACK ANODIZED ALUMINUM	1 3/4"	HOLLOW	GLASS	-	HW-1 PANIC EXIT REQUIRED
(D2)	ALUMINUM STOREFRONT	3'-6" X 8'-0"	ALUMINUM	BLACK ANODIZED ALUMINUM	1 3/4"	HOLLOW	GLASS	-	HW-1 PANIC EXIT REQUIRED NO HARDWARE ON EXTERIOR SIDE OF DOOR
(D3)	S.C. WOOD	3'-0" X 7'-0"	H. METAL	L-200, SEE SPECIAL SURFACE SCHEDULE	1 3/4"	SOLID	-	-	HW-5 FOR MULTI-OCC. REST RM UNDERCUT DOOR BOTTOM 1" AT RESTROOM
(D4)	S.C. WOOD	2'-6" X 7'-0"	H. METAL	L-200, SEE SPECIAL SURFACE SCHEDULE	1 3/4"	SOLID	-	-	HW-6
(D5)	HOLLOW METAL	3'-6" X 7'-0"	H. METAL	METAL PAINTED	1 3/4"	HOLLOW	-	-	HW-3
(D6)	ALUM STOREFRONT VESTIBULE	3'-0" X 8'-0"	ALUMINUM	ANODIZED ALUMINUM	1 3/4"	HOLLOW	GLASS	-	HW-2

HARDWARE SCHEDULE									
SET	HINGES	CLOSERS	PUSH/PULL	LOCKSET	STOPS	THRES	ADA SIGNAGE	KICKPLATE	SILENCERS
HW-1 PANIC EXIT REQ.	PEMKO CFM95HD1	YALE UNI-3501 689	ROCKWOOD BF168 US32D TYPE 1 HD MOUNTING	EXIT DEVICE: ADAMS RITE 8600 C-36-628-8655 WITH 8650 ESCUTCHEON YALE CYLINDER (1) K620 X 1160 X 626 NOTE: HW-1 CYLINDERS TO BE SMALL FORMAT 7-PIN MORTISE CYLINDER HOUSING WITH SARGEANT CAM.	IVES FS18S	HOLD PEMKO 168 A	-	-	-
HW-1 LOCKABLE	PEMKO CFM95HD1	YALE UNI-3501 689	ROCKWOOD 47-37 (33" CTC) T1HD MOUNTING US32D	DEADBOLT: ADAMS RITE M51851SW X 4016 4085X4089X(2)MS4043 628 YALE CYLINDER (2) 1194X1160L 626	IVES FS18S	PEMKO 168 A	-	-	-
HW-2	PEMKO CFM95HD1	YALE UNI-3501 689	ROCKWOOD 47-37 (33" CTC) T1HD MOUNTING US32D	NOTE: VESTIBULE ENTRY DOORS TO HAVE PUSH BAR ONLY. NO PULL ON OPPOSITE SIDE.	-	-	-	-	-
HW-3	PEMKO CFM95HD1	YALE UNI-4410 689 6150	-	LATCH GUARD: MCKINNEY LPH US32D EXIT DEVICE: YALE 2106-6150 EXIT ALARM DETECTOR: EX-500 WEATHER STRIPPING: PEMKO 330AS, RAIN DRIP: PEMKO 36AS	-	PEMKO 168 A	-	IVES 8400 10" X 34" US32D (PUSH SIDE ONLY)	-
HW-4	McKINNEY, MPB79 4.5X4.5 619	YALE 3501-REG 690	-	PRIVACY LOCK YALE AU YMCOL 4702LN X 693X497 619	McKINNEY WSO2 619	-	McKINNEY-HCLAV01-M HCLAV01-W	IVES 8400 10" X 34" 619 (BOTH SIDES OF DOOR)	ROCKWOOD 608
HW-5	McKINNEY, MPB79 4.5X4.5 619	YALE 3501-REG 690	McKINNEY P0353 X 5A 619 PUSH/PULL: DP1073 619	-	McKINNEY WSO2 619	-	-	IVES 8400 10" X 34" 619 (BOTH SIDES OF DOOR)	ROCKWOOD 608
HW-6	McKINNEY, MPB79 4.5X4.5 619	-	-	YALE MO 5301LN 619	McKINNEY WSO2 619	-	-	IVES 8400 10" X 28" 619 (FULL SIZE ONLY)	ROCKWOOD 608

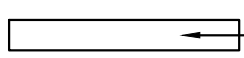
WALL SCHEDULE		INSTALLED AND FURNISHED BY: G.C. UNLESS NOTED OTHERWISE	
NO.	DESCRIPTION		
(W1)	3'-6/8" 20GA. METAL STUD WALL W/ 1/2" TYPE "X" GYP. BOARD BOTH SIDES (SEE ARCHITECTURAL DETAILS & ELEVATIONS)		
(W2)	3'-6/8" 20GA. METAL STUD WALL W/ 1/2" TYPE "X" GYP. BOARD ON ONE SIDE (SEE ARCHITECTURAL DETAILS & ELEVATIONS)		
(W3)	(2) 3'-5/8" 20GA. METAL STUD WALLS W/ 1/2" TYPE "X" GYP. BOARD BOTH SIDES (SEE ARCHITECTURAL DETAILS & ELEVATIONS)		
(W4)	3'-5/8" 20GA. METAL STUD LOW WALL W/ 1/2" TYPE "X" GYP. BD BOTH SIDES. PROVIDE 3 1/2" KNEE-WALL BRACE/POST @ CORNERS AND @ 48" O.C.		
(W5)	6" 20GA. METAL STUD WALL W/ 1/2" TYPE "X" GYP. BOARD BOTH SIDES (SEE ARCHITECTURAL DETAILS & ELEVATIONS)		
(W6)	6" 20GA. METAL STUD WALL W/ 1/2" TYPE "X" GYP. BOARD ONE SIDE (SEE ARCHITECTURAL DETAILS & ELEVATIONS)		
(W7)	6" 20GA. METAL STUD LOW WALL W/ 1/2" TYPE "X" GYP. BOARD BOTH SIDES. PROVIDE 3 1/2" KNEE-WALL BRACE/POST @ CORNERS AND @ 48" O.C.		

WALL PANEL SCHEDULE					INSTALLED AND FURNISHED BY: G.C. UNLESS NOTED OTHERWISE	
NO	MANUFACTURER	DESCRIPTION	MFG #	COLOR FINISH	REMARK	
(WP1)	CRANE COMPOSITES INC.	F.R.P. THICKNESS: .075	LBGS. 14	#636 (GRAY), SM/SM	CONTACT: LINDA RUSE 310.857.9036	
(WP2)	-	S.S. PANEL (22 GA)	-	BRUSHED FINISH	FURNISHED BY PX, INSTALLED BY G.C.	
(WP3)	-	S.S. PANEL (22 GA)	-	DIAMOND PATTERN FINISH	FURNISHED BY PX, INSTALLED BY G.C.	
(WP4)	NOT USED					
(WP6)	NOT USED					
(W10)	NOT USED					
(W102)	WOLF GORDON	PRINT WALLCOVERING	-	-	CONTACT: CATHY DY 310.770.1165 cathy.dy@wolfgordon.com	

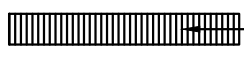
SPECIAL SURFACE SCHEDULE						INSTALLED AND FURNISHED BY: G.C. UNLESS NOTED OTHERWISE	
NO	MANUFACTURER	PRODUCT	MFG #	STAIN / COLOR	FINISH	REMARK	
(Q2-5)	SAMSUNG RADIANT	ARTIFICIAL QUARTZ	TE-215	TETON BEIGE	POLISHED	SERVICE COUNTER & DRINK STATION PROVIDED BY PX, INSTALLED BY G.C.	
(Q2-6)	SAMSUNG RADIANT	ARTIFICIAL QUARTZ	UG-950	URAL GRAY	POLISHED	ICE COUNTER PROVIDED BY PX, INSTALLED BY G.C.	
(Q2-7)	SAMSUNG RADIANT	ARTIFICIAL QUARTZ	-	BLACK GALAXY GRANITE	POLISHED	LAVATORY UNDER MOUNT COUNTER PROVIDED BY PX, INSTALLED BY G.C.	
(F10-10)	SCHLUTER	DILEX-AHK COVE TILE TRIM	AHK IS 100ATGB	ANODIZED ALUMINUM	BRUSHED NICKEL	REF. SHEET A-104 FOR MORE INFO	
(F10-10)	SCHLUTER	RONDEC EDGE TILE TRIM	R0100 ATGB	ANODIZED ALUMINUM	BRUSHED NICKEL	REF. SHEET A-104 FOR MORE INFO	
(C-200)	WILSONART	PLASTIC LAMINATE	7949K-18	ASIAN NIGHT	-	INTERIOR RESTROOM DOORS (BOTH SIDES)	

INTERIOR PAINT SCHEDULE					INSTALLED AND FURNISHED BY: G.C. UNLESS NOTED OTHERWISE	
NO	MANUFACTURER	MFG #	COLOR	FINISH	REMARK	
(P10A)	SHERWIN-WILLIAMS	SW 7065	ARGOS	PROMAR 200, ZERO VOC, LATEX SEMI-GLOSS	REAR SERVICE DOOR	
(P10B)	NOT USED					
(P101)	SHERWIN-WILLIAMS	SW 6252	ICE CUBE	PROMAR 200, ZERO VOC, LATEX EGG-SHELL	RESTROOM & RESTROOM VESTIBULE CEILING	
(P102)	NOT USED					
(P103)	SHERWIN-WILLIAMS	SW 7032	WARM STONE	PROMAR 200, ZERO VOC, LATEX EGG-SHELL	DROPPED SOFFITS	
(P104)	SHERWIN-WILLIAMS	SW 6155	RICE GRAIN	PROMAR 200, ZERO VOC, LATEX EGG-SHELL	MENU BOARD SOFFIT, DINING RM. WALLS, RESTROOM VESTIBULE WALLS	
(P105)	NOT USED					
(P106)	SHERWIN-WILLIAMS	SW 7020	BLACK FOX	DTM ACRYLIC GLOSS, LOW VOC	RESTROOM DOOR FRAMES & LCD NICHE (BACK WALL)	
(P205)	SHERWIN-WILLIAMS	SW 7675	SEALSKIN	PROMAR 200, ZERO VOC, LATEX EGG-SHELL	FRONT & BACK & UNDERSIDE FACES OF SERVICE COUNTER SOFFIT	

WALL LEGEND



NEW EXTERIOR WALL



NEW EXTERIOR WALL
FRAMED WITH
STRUCTURAL STEEL STUDS



NEW INTERIOR WALL (FULL HT.)



NEW INTERIOR WALL (LOW WALL
- REF. ELEV. & DETAILS)



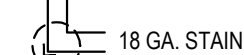
WALK-IN BOX PANEL

NOTE: THE FOLLOWING STAINLESS STEEL PROVIDED BY PX-INSTALLED BY G.C.

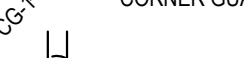
- PANEL DIVIDERS AT WP3
- INSIDE CORNER AT WP3 TO WP2
- FLASHING AT TOP OF BASE WP3
- WP2 PIECE AT LENGTH OF WALL

NOTE: THE FOLLOWING STAINLESS STEEL PROVIDED BY G.C.-INSTALLED BY G.C.

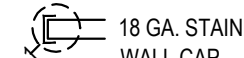
- INSTALL 18 GA STAINLESS STEEL CORNER GUARD & WALL CAP INSIDE KITCHEN



18 GA. STAINLESS STEEL
CORNER GUARD



18 GA. STAINLESS STEEL
CORNER GUARD/FRA - ALL
AROUND PERIMETER OF
OPENING - FRAME TO BE
WELDED WITH MITERED
CORNERS TO FORM SINGLE
UNIT.

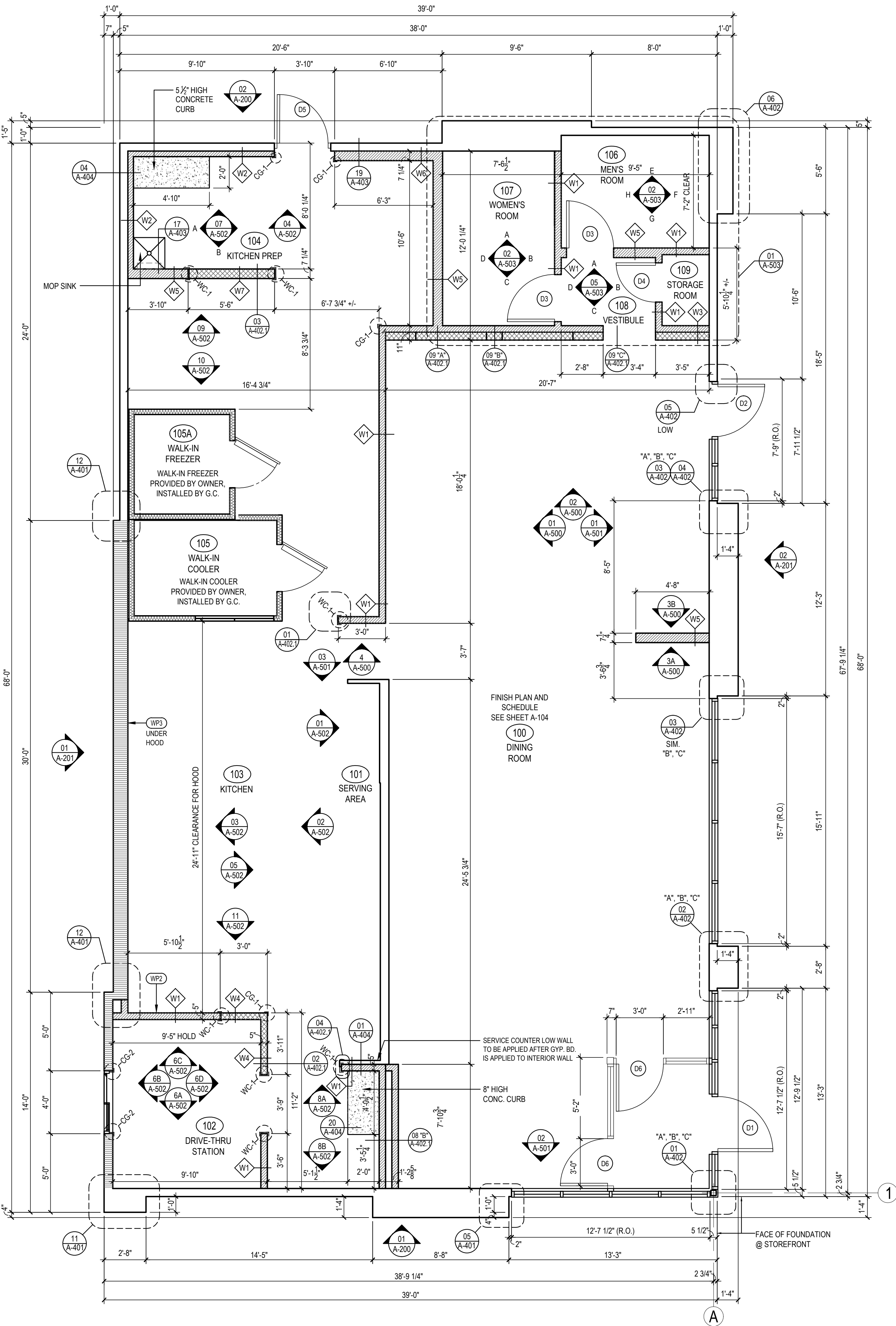


18 GA. STAINLESS STEEL
WALL CAP

ALL OTHER STAINLESS STEEL BY G.C.

NOTE:
"G.C." TO INSTALL MIN 3'-1/2"
NON-COMBUSTIBLE MINERAL
FIBERGLASS BATTS SOUND INSULATION
AT ALL RESTROOM PARTITIONS AND
CEILINGS.

*ALL INTERIOR DIMENSIONS ARE
FINISHED TO FINISHED



FLOOR PLAN

1

Scale= 1/4" = 1'-0"

A-103



PANDA RESTAURANT GROUP INC.

1683 Walnut Grove Ave.
Rosemead, California
91770

Telephone: 626.799.9898
Facsimile: 626.372.8288

All ideas, designs, arrangement and plans indicated or represented by this drawing are the property of Panda Express Inc. and were created for use on this specific project. None of these ideas, designs, arrangements or plans may be used by or disclosed to any person, firm, or corporation without the written permission of Panda Express Inc.

REVISIONS:

ISSUE DATE:

1ST	CHECKSET	09-23-2016
2ND	PERMIT SET	09-30-2016
3RD	BID SET	12-21-2016

DRAWN BY: SHANTIA RAEESI

PANDA PROJECT #: S8-17-D5084

ARCH PROJECT #: 20160806

GreenbergFarrow

1430 West Peachtree St. NW, Suite 200
Atlanta, GA 30309
t: 404.601.4000

PROFESSIONAL SEAL

PANDA EXPRESS

SILVER BLUFF RD & PINE LOG RD
1065 PINE LOG ROAD
AIKEN, SC 29801

A-103

FLOOR PLAN