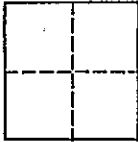


CORNER RECORD 730

COUNTY OF ALAMEDA T. 1 S. R. 3 W. M.D.B. & M. MERIDIAN CALIFORNIA
 CORNER TYPE: GOV'T. CORNER ☐ MEANDER ☐ RANCHO ☐ CONTROL ☐ OTHER ☐
 CORNER IDENTIFICATION - DATE OF VISIT FEBRUARY 2 1998



CORNER - LEFT AS FOUND ☐ FOUND AND TAGGED ☐ REESTABLISHED OBLITERATED CORNER ☒ REBUILT ☐

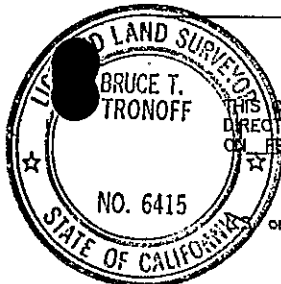
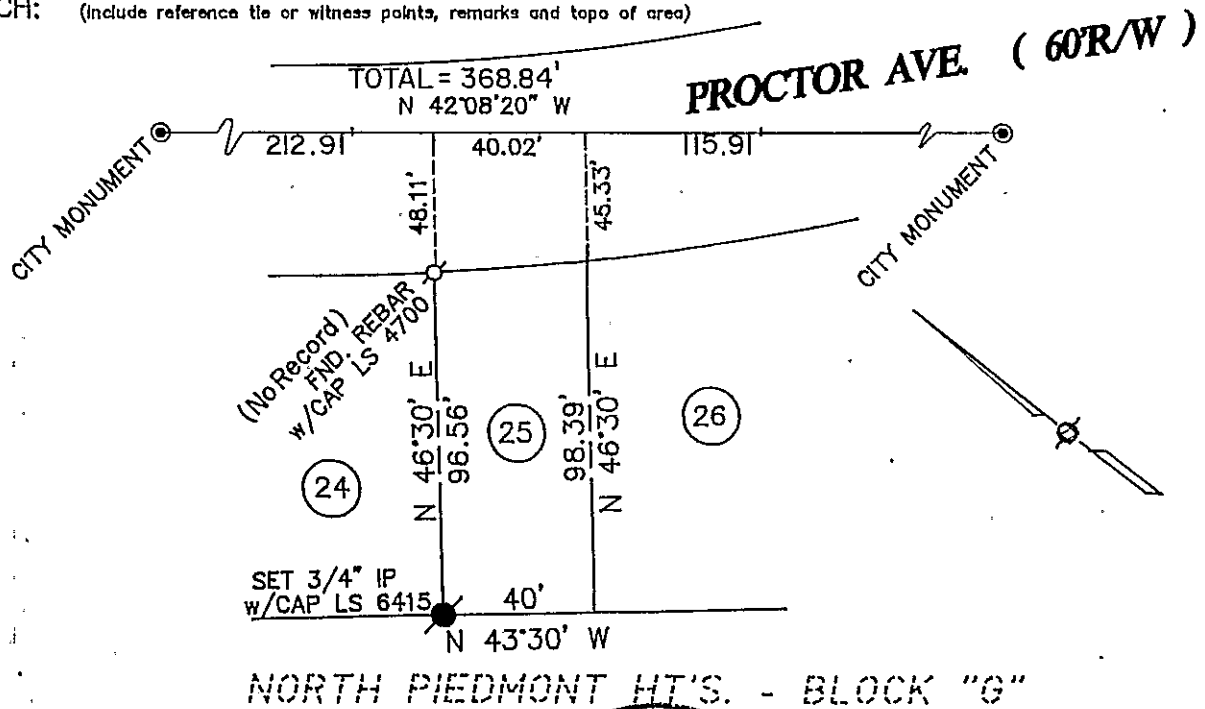
PHYSICAL DESCRIPTION OF CORNER FOUND; EVIDENCE AND METHOD USED TO IDENTIFY OR REESTABLISH **BLOCK 3**
 ESTABLISHED SOUTHWESTERLY LOT CORNER BETWEEN LOTS 24 AND 25, PER MONUMENTS AS SHOWN ON MAP OF
 "HIGHLAND MANOR", OAKLAND ALAMEDA COUNTY, FILED 08/25/15, BOOK 14, MAPS, PAGE 24.

PHYSICAL DESCRIPTION OF MONUMENTS REBUILT OR PERPETUATED

3/4" X 30" IRON PIPE WITH PLASTIC CAP L.S. 6415

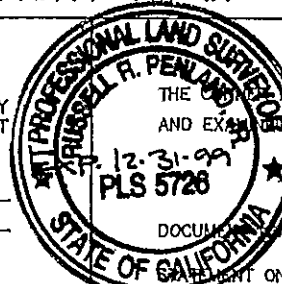
CALIFORNIA COORDINATE SYSTEM ORDER: FIRST ☐ SECOND ☐ THIRD ☐
 STATIONS USED: NGS (USC & GS) STATE ☐ COUNTY ☐ OTHER ☐ STATION _____ STATION _____
 ZONE _____ ELEVATION _____ NORTHINGS (Y) _____ EASTINGS (X) _____

SKETCH: (Include reference tie or witness points, remarks and topo of area)

**SURVEYOR'S CERTIFICATE**

THIS CORNER RECORD WAS PREPARED BY ME OR UNDER MY DIRECTION IN CONFORMANCE WITH THE LAND SURVEYORS ACT OF FEBRUARY 12, 1996

SIGNED: [Signature]
 or R.C.E. No.: L.S. 6415 (EXP. 12/31/98)

**COUNTY SURVEYOR'S CERTIFICATE**

THE CORNER RECORD WAS RECEIVED AND EXAMINED AND FILED
 DATE: 2-29-98 BY: Russell R. Penland
 COUNTY: Alameda DEPUTY COUNTY SURVEYOR

SEAL

STAMP ON BACK OF SHEET

YES ☐ NO ☐