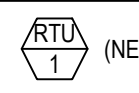



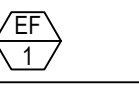
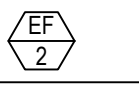
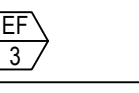


PACKAGED ROOF TOP UNIT SCHEDULE				(LENNOX MODELS TO BE SPECIFIED) (LO NoX in California)	
UNIT SYMBOL		 (NEW)	 (NEW)	 (NEW)	
LOCATION		ROOF	ROOF	ROOF	
BLOWER	SA CFM (TONS)/ OA CFM	2,000 (6-TON)/ 450	3,000 (7.5-TON)/ 650	3,000 (7.5-TON)/ 650	
	TSP (IN W.G.)	0.68"	0.7"	0.7"	
COOLING	TOTAL (BTU/HR)	69,000	96,000	96,000	
	SENSIBLE (BTU/HR)	50,370	69,120	69,120	
	AMBIENT (F)	95	95	95	
	COIL ENTERING	67 WB/80 DB	67 WB/80 DB	67 WB/80 DB	
HEATING (NATURAL GAS BTU/HR)		STAGE (1) 81,000 STAGE (2) 108,000	STAGE (1) 117,000 STAGE (2) 180,000	STAGE (1) 117,000 STAGE (2) 180,000	
ELECTRICAL	POWER SUPPLY	208V/3Ph/60HZ	208V/3Ph/60HZ	208V/3Ph/60HZ	
	COMPRESSOR (RLA)	17.6	(2) 13.1	(2) 13.1	
	CONDENSER MOTOR (FLA)	(1) 2.4	(2) 2.4	(2) 2.4	
	EVAPORATOR MOTOR (FLA)	4.6	7.5	7.5	
	MIN. CIRCUIT AMPACITY	29, HACR = 45	42, HACR = 50	42, HACR = 50	
PANDA NATIONAL ACCOUNT. NO SUBSTITUTION ALLOWED. CONTACT LENNOX NA @ 800-367-6285 EMAIL: SouthTeam@Lennoxind.com		BY LENNOX MODEL KGB074S4T DOWN DISCHARGE COMPLETE WITH 14" ROOF MOUNT CURB, ELECTRONIC PROGRAMMABLE THERMOSTAT, DIFFERENTIAL ENTHALPY ECONOMIZER WITH BAROMETRIC RELIEF, HUMIDITROL DEHUMIDIFICATION, BLOWER PROVING SWITCH, DIRTY FILTER SWITCH. OPER. WT. : 1,040 LBS APPROX. EER=11.2		BY LENNOX MODEL KGB092S4M DOWN DISCHARGE COMPLETE WITH 14" ROOF MOUNT CURB, ELECTRONIC PROGRAMMABLE THERMOSTAT, DIFFERENTIAL ENTHALPY ECONOMIZER WITH BAROMETRIC RELIEF, HUMIDITROL DEHUMIDIFICATION, BLOWER PROVING SWITCH, DIRTY FILTER SWITCH. OPER. WT. : 1,340 LBS APPROX. EER=11.0	
FOR INSTALLATION AND START-UP QUESTIONS CONTACT LENNOX NA TECH SUPPORT @ 800-367-6285 EXT. #1 EMAIL: NATS@LENNOXIND.COM					
ALL ITEMS RELATED TO HVAC SYSTEM SHALL BE PROVIDED AND INSTALLED BY CONTRACTOR. CONTACT LENNOX REPRESENTATIVE ABOVE. - THERMOSTATS: REMOTE SENSOR TYPE, 247 PROGRAMMABLE AND CAPABLE OF OPERATING ROOFTOP UNITS AND ACCESSORIES - DUCT MOUNTED SMOKE DETECTORS: IONIZATION TYPE/UL LISTED, CSFM CERTIFIED, LENNOX CAT# 19L22.					
NOTE: 1. (6 TON) AND (7.5 TON) ECONOMIZER INCLUDED IN ELECTRICAL TOTAL MCA PER MANUFACTURER'S LITERATURE. 2. UNIT WEIGHTS ABOVE INCLUDE ACCESSORIES AND CURB. 3. FACTORY OPTIONS SHALL INCLUDE E-COAT EVAPORATOR AND HUMIDITROL COILS, AND PROVIDE HAIL GUARD PROTECTION FOR ALL UNITS. 4. FACTORY OPTIONS SHALL INCLUDE FACTORY INSTALLED DISCONNECTS AND CONVENIENCE OUTLETS (FIELD POWERED REFER TO ELECTRICAL DRAWING). 5. PROVIDE THRU THE BASE ELECTRICAL CONNECTION KIT FOR ALL UNITS. 6. PROVIDE UNITS WITH HUMIDITROL DEHUMIDIFICATION OPTION. 7. PROVIDE WITH FACTORY INSTALLED RETURN AIR DUCT SMOKE. MECHANICAL CONTRACTOR SHALL ADDITIONALLY PROVIDE AND INSTALL ALL REMOTE RESETS, STROBES, AND ALARMS IF REQUIRED BY CODE & INSPECTOR. 8. PROVIDE 14" CURBS AND HOLD DOWN BRACKETS. 9. PROVIDE LENNOX CS7500 THERMOSTAT WITH LENNOX CAT# 19L22 REMOTE DUCT TEMPERATURE SENSOR.					

MAKE-UP AIR UNIT SCHEDULE										
MARK	MFR/ MODEL	LOCATION	SERVICE AREA	GAS HEAT	TYPE	COOLING	CFM	ESP	MOTOR	REMARKS
MA-1	CAPTIVEAIRE EAS-D-500-G18-MPU	ROOF-TOP	KITCHEN HOOD #1 & #2	INPUT: 409,003 BTU/H OUTPUT: 376,283	DIRECT FIRE GAS HEATED, DX COOLED SUPPLY, DOWN DISCHARGE	DUAL CIRCUIT 5/5 MODULAR PACKAGED COOLING OPTION	4,398	0.75"	5 HP 208V/3PH/60HZ	GAS FIRED MAKEUP AIR UNIT WITH (2) 24ABB360 5 TON, DUAL CIRCUIT AIR COOLED CONDENSING UNITS. REFER TO SHEET M-402 FOR INFORMATION. 4-5 WEEK LEAD TIME. SHIPPING INCLUDED IN PRICE. SHIPS FROM TYLER, TX. SHIPS SEPARATE, FREIGHT INCLUDED. NOTE: FACTORY OPTIONS SHALL INCLUDE NONCORROSIVE COATING AND HAIL GUARD PROTECTION.

DIFFUSER & GRILLE SCHEDULE										
DESIGNATION	MANUFACTURER	MODEL NO	TYPE	COLOR	NOM NECK SIZE	NOM FACE SIZE	FRAME TYPE	NC MAX	REMARKS	
A	TITUS	PCS-3	PERFORATED ADJUSTABLE CORE	25 WHITE	PER PLAN	24" x 24"	LAY-IN T-BAR	< 30	INSULATION BLANKET FOR BACKPAN, CONTRACTOR FURNISHED ROUND NECK ADAPTER	
B	TITUS	PCS-3	PERFORATED ADJUSTABLE CORE	25 WHITE	PER PLAN	20" x 20"	SURFACE	< 30	WITH 20X20 SURFACE FRAME, REQUIRES A 20.5"X20.5" CEILING OPENING, INSULATION BLANKET, D-100 RADIAL DAMPER	
C	TITUS	PCS-3	PERFORATED ADJUSTABLE CORE	25 WHITE	PER PLAN	12" x 12"	SURFACE	< 30	WITH12X12 SURFACE FRAME, REQUIRES A 12.5"X12.5" CEILING OPENING, INSULATION BLANKET, D100 RADIAL DAMPER	
D	TITUS	PAR-3	PERFORATED RETURN	25 WHITE	22" x 22"	24" x 24"	LAY-IN T-BAR	< 35	CONTRACTOR FURNISHED INSULATE RETURN BOX FOR CONNECTING FLEX DUCT	
E	TITUS	PAR-3	PERFORATED EXHAUST	25 WHITE	PER PLAN	12" x 12"	SURFACE	< 30	WITH12X12 SURFACE FRAME, REQUIRES A 12.5"X12.5" CEILING OPENING, D100 RADIAL DAMPER	
F	TITUS	PAR-3	PERFORATED RETURN	25 WHITE	22" x 22"	24" x 24"	LAY-IN T-BAR	< 35	CONTRACTOR FURNISHED INSULATE RETURN BOX FOR CONNECTING FLEX DUCT	
H	TITUS	PCS-3	PERFORATED ADJUSTABLE CORE	PANDA BRONZE	PER PLAN	24" x 24"	LAY-IN T-BAR	< 30	WITH INSULATION BLANKET, BALANCE USING MANUAL VOLUME DAMPER AT BRANCH DUCT	
J	TITUS	PCS-3	PERFORATED ADJUSTABLE CORE	25 WHITE	PER PLAN	24" x 24"	LAY-IN T-BAR	< 30	AG95 OBD, INSULATION BLANKET FOR BACKPAN, CONTRACTOR FURNISHED ROUND NECK ADAPTER	
K	TITUS	PCS-3	PERFORATED ADJUSTABLE CORE	25 WHITE	PER PLAN	12" x 12"	SURFACE	< 30	WITH12X12 SURFACE FRAME, REQUIRES A 12.5"X12.5" CEILING OPENING, INSULATION BLANKET, D100 RADIAL DAMPER	
L	TITUS	PCS-3	PERFORATED ADJUSTABLE CORE	25 WHITE	PER PLAN	12" x 12"	SURFACE	< 30	WITH12X12 SURFACE FRAME, REQUIRES A 12.5"X12.5" CEILING OPENING	
NOTE: PROVIDE FACTORY INSTALLED BACK PAN INSULATION ON AIR DEVICES. HVAC CONTRACTOR IS TO PURCHASE ALL AIR DEVICES FROM PANDA APPROVED NATIONAL ACCOUNT VENDOR THERMAIR SYSTEMS INC. PLEASE CONTACT RON CAMPTON AT 602-705-5010 OR EMAIL: ronc@thermairsystems.com										

AIR BALANCE SCHEDULE				
ITEM 	SUPPLY AIR	RETURN AIR	MAKE-UP AIR	EXHAUST
MAU1	0	0	+4,398	0
EF-1, EF-2	0	0	0	-2,750 x 2
RTU-1	+2,000	-1,550	450	0
RTU-2, RTU-3	+3,000, +3,000	-2,350, -2,350	2@650 EA	0
EF-3	-	-	-	-450
TOTAL	+8,000	-6,250	+6,148	-5,950
BUILDING PRESSURE = +198 CFM				
BALANCE TOLERANCES AS FOLLOWS: KITCHEN EXHAUST HOODS: 0% TO +10% OUTDOOR AIR: 0% TO +10% SUPPLY & RETURN DIFFUSERS: ±10% TOILET EXHAUST: ±10% BALANCE RTU SUPPLY AND RETURN PRIOR TO TURNING ON EXHAUST FANS. KITCHEN EXHAUST FANS SHALL BE BALANCED WITH VELOCITY MATRIX OR A 4" ANEMOMETER				

EXHAUST FAN SCHEDULE			
FAN NO.			
LOCATION	ROOF	ROOF	ROOF
AREA SERVED	KITCHEN GREASE EXHAUST HOOD #1	KITCHEN GREASE EXHAUST HOOD #2	RESTROOMS
FAN DUTY	AIR EXHAUST	AIR EXHAUST	AIR EXHAUST
FAN TYPE	CENTRIFUGAL BELT-DRIVEN	CENTRIFUGAL BELT-DRIVEN	CENTRIFUGAL BELT-DRIVEN
FAN ARRANGEMENT	UPBLAST	UPBLAST	DOWNBLAST
MIN. WHEEL DIAMETER	-	-	-
PERFORMANCE	C.F.M.	2,750	2,750
	T.S.P.	1.25"	1.25"
	B.H.P.	1.38	1.38
	FAN R.P.M.	1223	1223
MOTOR	MOTOR H.P.	2.0	2.0
	ELEC. CHARACTERISTICS	208V/3PH/60HZ	208V/3PH/60HZ
	MOTOR R.P.M.	1725	1725
	MOTOR SPECIAL FEATURES	OPEN DRIP-PROOF	OPEN DRIP-PROOF
ACCESSORIES	1. VENTED ROOF CURB 2. HINGED AND CHAINED FAN INSTALLATION FOR DUCT ACCESS	1. VENTED ROOF CURB 2. HINGED AND CHAINED FAN INSTALLATION FOR DUCT ACCESS	1. ROOF CURB 2. BACKDRAFT DAMPER
MANUFACTURER	CAPTIVEAIRE MODEL: EABDU18 WT. 222 LBS	CAPTIVEAIRE MODEL: EABDU18 WT. 222 LBS	CAPTIVEAIRE MODEL: EABDCR7 WT. 108 LBS

NOTES:

- KITCHEN EXHAUST FANS SHALL BE ELECTRICALLY INTERLOCKED WITH MAKE-UP AIR UNIT AND ROOFTOP UNITS.
- FOR WIRING DIAGRAM SEE 5M-501

HVAC CONTROL SETTINGS

EACH HVAC UNIT SHALL BE PROVIDED WITH CONTROLS AS FOLLOWS:

TERMOSTAT: LENNOX COMMERCIAL PROGRAMMABLE THERMOSTAT WITH REMOTE TEMPERATURE SENSOR. SEE SHEET M-100 FOR THERMOSTAT AND SENSOR LOCATIONS.

ALL THERMOSTATS SHALL HAVE MANUAL OVERRIDE.

EACH UNIT CONTROL SHALL BE SET UP INITIALLY AS FOLLOWS:

CONTRACTOR SHALL DETERMINE OCCUPIED PERIOD FROM OWNER.

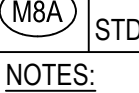
FAN OPERATION SHALL BE CONTINUOUS DURING OCCUPIED PERIOD AND CYCLE WITH COOLING/HEATING DURING UNOCCUPIED PERIOD.

PROGRAMMED SETPOINTS (FOR EACH THERMOSTAT):

COOLING OCCUPIED: 75°F.
COOLING UNOCCUPIED: 85°F.
HEATING OCCUPIED: 68°F.
HEATING UNOCCUPIED: 50°F.

NOTE: DEVIATIONS FROM THE ABOVE MAY RESULT IN UNACCEPTABLE AIR QUALITY, COMFORT AND/OR ENERGY CONSUMPTION.

AIR CURTAIN SCHEDULE

EQUIP.	MFR/MODEL	DESCRIPTION
	MARS	UNHEATED AIR CURTAIN (SERVICE DOOR), 115/1/60
	STD236-1U-OB	WEIGHT 65 LBS. PROVIDED BY PANDA EXPRESS
NOTES: INSTALL ACCORDING TO MANUFACTURER'S INSTRUCTIONS.		

MA-1 CONTROL SETTINGS

EACH UNIT CONTROL SHALL BE SET UP INITIALLY AS FOLLOWS:

FAN OPERATION SHALL BE CONTINUOUS DURING COOKING OPERATION INTERLOCK WITH KITCHEN EXHAUST FANS. REFER TO HOOD DRAWINGS.

PROGRAMMED SETPOINTS :

COOLING : 85°F.
HEATING : 55°F.

MECHANICAL SPECIFICATIONS

- WORK INCLUDES INSTALLATION OF HVAC SYSTEMS, INCLUDING GREASE EXHAUST FANS AND MAKE-UP AIR UNIT FOR KITCHEN HOODS, SPACE HEATING/AIR CONDITIONING SYSTEMS, SUPPLY, RETURN, EXHAUST, AND GREASE EXHAUST DUCTWORK, GRILLES, REGISTERS, DIFFUSERS, COMPLETE CONTROLS SYSTEM, INTERLOCK WIRING FOR OPERATION OF KITCHEN HOODS, EXHAUST FANS, AND MAKE-UP AIR UNIT, DUCT INSULATION, AND RELATED ITEMS NECESSARY FOR A COMPLETE FUNCTIONING SYSTEM AS INDICATED ON THE PLANS. FURNISH ALL NEW MATERIALS AND EQUIPMENT UNLESS NOTED OTHERWISE (U.N.O.).
- DRAWINGS FOR HVAC WORK ARE DIAGRAMMATIC, SHOWING THE GENERAL LOCATION, TYPE, LAYOUT AND REQUIRED EQUIPMENT. DRAWINGS SHALL NOT BE SCALED FOR EXACT MEASUREMENTS. AS REQUIRED, REFER TO ARCHITECTURAL AND MANUFACTURER'S STANDARD INSTALLATION DRAWINGS FOR EQUIPMENT CONNECTIONS AND INSTALLATION REQUIREMENTS. FURNISH AND INSTALL DUCTWORK, CONNECTIONS, ACCESSORIES, OFFSETS, AND MATERIALS NECESSARY TO FACILITATE SYSTEM'S FUNCTIONING AS INDICATED BY THE DESIGN AND EQUIPMENT SHOWN ON PLANS.
- CODE COMPLIANCE: ALL WORK COVERED BY THIS SECTION SHALL BE IN ACCORDANCE WITH ALL LOCAL CODES AND ACCEPTABLE TO THE AUTHORITY HAVING JURISDICTION.
- COORDINATE WORK WITH OTHER TRADES. EQUIPMENT FURNISHED BY OTHERS AND OWNER REQUIREMENTS. PROVIDE DUCT RISES AND DROPS AS REQUIRED FOR INSTALLATION AND/OR TRADE COORDINATION. NOTIFY ARCHITECT OF ANY DISCREPANCIES BEFORE STARTING WORK. WORK SHALL BE PERFORMED BY EXPERIENCED TRADESMEN AND THEIR WORK SHALL BE OF HIGH STANDARD ACCEPTABLE TO THE OWNER.
- DUCTWORK: DUCT SYSTEMS SHALL BE CONSTRUCTED, INSTALLED, SEALED AND INSULATED AS PROVIDED IN THE INT'L ENERGY AND MECHANICAL CODES. SHEET METAL SHALL BE IN ACCORDANCE WITH ASHRAE AND SMACNA STANDARDS. SHEET METAL SHALL BE GALVANIZED OF LOCK-FORMING QUALITY, ASTM A-525, UNLESS OTHERWISE NOTED. DUCT DIMENSIONS ON DRAWINGS ARE NET INSIDE CLEAR DIMENSIONS ON LINED DUCTS OR SHEET METAL DIMENSIONS ON UNLINED DUCTS. ALL ANGLE IRON USED FOR SUPPORT SHALL BE GALVANIZED. ROUND RIGID DUCTWORK SHALL CONFORM TO SMACNA TABLE 3-2.
- INSTALL DUCT HIGH AS POSSIBLE WITHIN JOIST SPACE. CONSULT ARCHITECT AND ENGINEER FOR ALTERNATE ROUTING IF CONFLICT OCCURS.
- SEAL ALL TRANSVERSE AND LONGITUDINAL DUCT SEAMS AIR-TIGHT. PROVIDE TURNING VANES AT ALL ELBOWS OR OFFSETS EXCEEDING 30 DEGREES.
- GREASE EXHAUST SYSTEM: ALL GREASE EXHAUST DUCTS SHALL BE FABRICATED BY WELDED JOINT CONSTRUCTION OF 16 GAUGE WELDED STEEL OR 18 GAUGE STAINLESS STEEL. PROVIDE RATED ACCESS DOORS AT ALL ELBOWS AND OFFSETS NECESSARY FOR COMPLETE CLEANING OF GREASE DUCT. PROVIDE MINIMUM 30"x30" UNOBSTRUCTED ACCESS OR ROUTE FROM THE CEILING TO EACH ACCESS DOOR. DO NOT BLOCK ACCESS WITH PLUMBING, ELECTRICAL OR HVAC OBSTRUCTIONS. ALL ELBOWS SHALL BE LONG RADIUS. GREASE DUCT SHALL BE INSTALLED EITHER IN A RATED ENCLOSURE PROVIDED BY THE GENERAL CONTRACTOR OR WRAPPED WITH FIREMASTER GREASE DUCT WRAP.
- DUCT INSULATION: PROVIDE DUCT WRAP FOR ALL DUCTS ABOVE CEILING, INCLUDING VERTICAL, HORIZONTAL, RIGID AND FLEXIBLE DUCTS. EXCLUDING PREFABRICATED PREINSULATED DUCTS AND GREASE DUCTS. DUCT WRAP SHALL BE JOHNS MANVILLE MICROLITE OR EQUAL WITH FOIL/SCRIMP/KRAFT, 1 IN THICKNESS, 1.5 POUNDS/FT3 DENSITY. DUCT WRAP SHALL BE BONDED GLASS FIBERS IN THERMOSETTING RESIN MEETING NFPA 90A, WITH K VALUE NOT TO EXCEED 0.23 AT 75 DEGREES F. FLAME SPREAD AND SMOKE DEVELOPED RATINGS SHALL NOT EXCEED 25/50. APPLY 100% ADHESIVE COVERAGE TO SHEET METAL DUCTWORK. PROVIDE ADDITIONAL MECHANICAL FASTENERS ON DUCTS OVER 12" WIDE OR 16" HIGH. MECHANICAL FASTENERS SHALL BE "GRIPNAIL" OR WELDED PIN AND SPEED CLIPS SPACED PER SMACNA STANDARDS.
- FLEX DUCT: PROVIDE FACTORY ASSEMBLED CLASS 1 AIR DUCT (UL 181) WITH FIBERGLASS INSULATION AND REINFORCED OUTER PROTECTIVE COVER/VAPOR BARRIER. FLEX DUCT SHALL MEET NFPA 90A WITH FLAME SPREAD UNDER 25, SMOKE DEVELOPED UNDER 50 AND SHALL BE RATED FOR 2" W.C. PRESSURE AND 0 TO 250 DEGREE TEMPERATURE. FLEX DUCT MAXIMUM ALLOWED LENGTH TO BE PER LOCAL CODE.
- PROVIDE INSULATION APPLIED TO COMPLETE BACKPAN OF AIR DEVICES.
- ACCESS DOOR: PROVIDE HINGED ACCESS PANELS IN DUCTWORK WHERE SHOWN AND AS REQUIRED FOR ACCESS TO DAMPERS OR EQUIPMENT. PROVIDE INSULATED ACCESS DOORS IN INSULATED DUCTWORK.
- AUTOMATIC TEMPERATURE CONTROL: CONTRACTOR TO PROVIDE AND INSTALL 24/7 PROGRAMMABLE THERMOSTATS AND REMOTE SENSORS.
- KITCHEN HOOD EQUIPMENT INTERLOCK: PROVIDE ALL INTERLOCK AND CONTROL WIRING FOR KITCHEN HOOD SYSTEMS, WHICH INCLUDES EF1, EF2, MAU1 AND ANSUL SYSTEM SHUT DOWN INTERLOCK TO MAKE-UP AIR FAN. UPON ACTIVATION OF ANSUL SYSTEM, MAKE-UP AIR FAN SHALL BE DEACTIVATED. PROVIDE ALL NECESSARY CONTROLS AND WIRING FOR A COMPLETE AND OPERABLE SYSTEM. INTERLOCK GREASE EXHAUST FANS AND MAKE-UP AIR UNIT TO START SIMULTANEOUSLY FROM SWITCH PROVIDED AT HOOD.
- TEST AND ADJUST EACH PIECE OF EQUIPMENT AND EACH SYSTEM AS REQUIRED TO ASSURE PROPER AIR BALANCE AND OPERATION. PROVIDE A CERTIFIED AIR BALANCE REPORT TO OWNER SHOWING DESIGN AND MEASURED AIR VOLUMES, STATIC PRESSURES, FAN RPMs, ETC. AIR BALANCE CONTRACTOR SHALL ADJUST SYSTEMS TO MINIMIZE NOISE AND VIBRATION, AND TO ASSURE PROPER FUNCTION OF CONTROLS, MAINTENANCE OF TEMPERATURE AND OPERATION. GENERAL CONTRACTOR TO OBTAIN ALL INSPECTIONS REQUIRED BY LOCAL CODE AND GUARANTEE WORK AND INSTALLATION FOR ONE YEAR AFTER ACCEPTANCE BY OWNER. GENERAL CONTRACTOR TO FURNISH OWNER WITH TWO COMPLETE SETS OF AS-BUILT DRAWINGS INDICATING ALL INSTALLED WORK, INCLUDING ALL CONTROL WIRING DIAGRAMS AND INTERLOCK FOR SYSTEM OPERATION.
- CONTRACTOR SHALL BE RESPONSIBLE FOR INSTALLATION OF ECONOMIZERS INCLUDING INSTALLATION OF ALL NECESSARY SENSORS AND CONNECTIONS TO THERMOSTAT. PROVIDE SUPPORT OF ECONOMIZERS PER MANUFACTURER'S REQUIREMENTS AND TEST FOR PROPER OPERATION PRIOR TO FINAL TEST AND BALANCE.



PANDA RESTAURANT GROUP INC.

1683 Walnut Grove Ave.
Rosemead, California
91770

Telephone: 626.799.9898
Facsimile: 626.372.8288

All ideas, designs, arrangement and plans indicated or represented by this drawing are the property of Panda Express Inc. and were created for use on this specific project. None of these ideas, designs, arrangements or plans may be used by or disclosed to any person, firm, or corporation without the written permission of Panda Express Inc.

REVISIONS:

05.11.21 ISSUE FOR BID

ISSUE DATE:

01.15.2021 ISSUE FOR PERMIT
05.11.2021 ISSUE FOR BID

DRAWN BY:

PANDA PROJECT #: S4-21-D7792

C&P PROJECT #: 2190853



2600 Maitland Center Pkwy. Maitland, FL 32751

P (407) 661-9100

F (407) 661-9101

www.c-p.com

Florida Corporate Certificate #AA-098508

05.11.2021

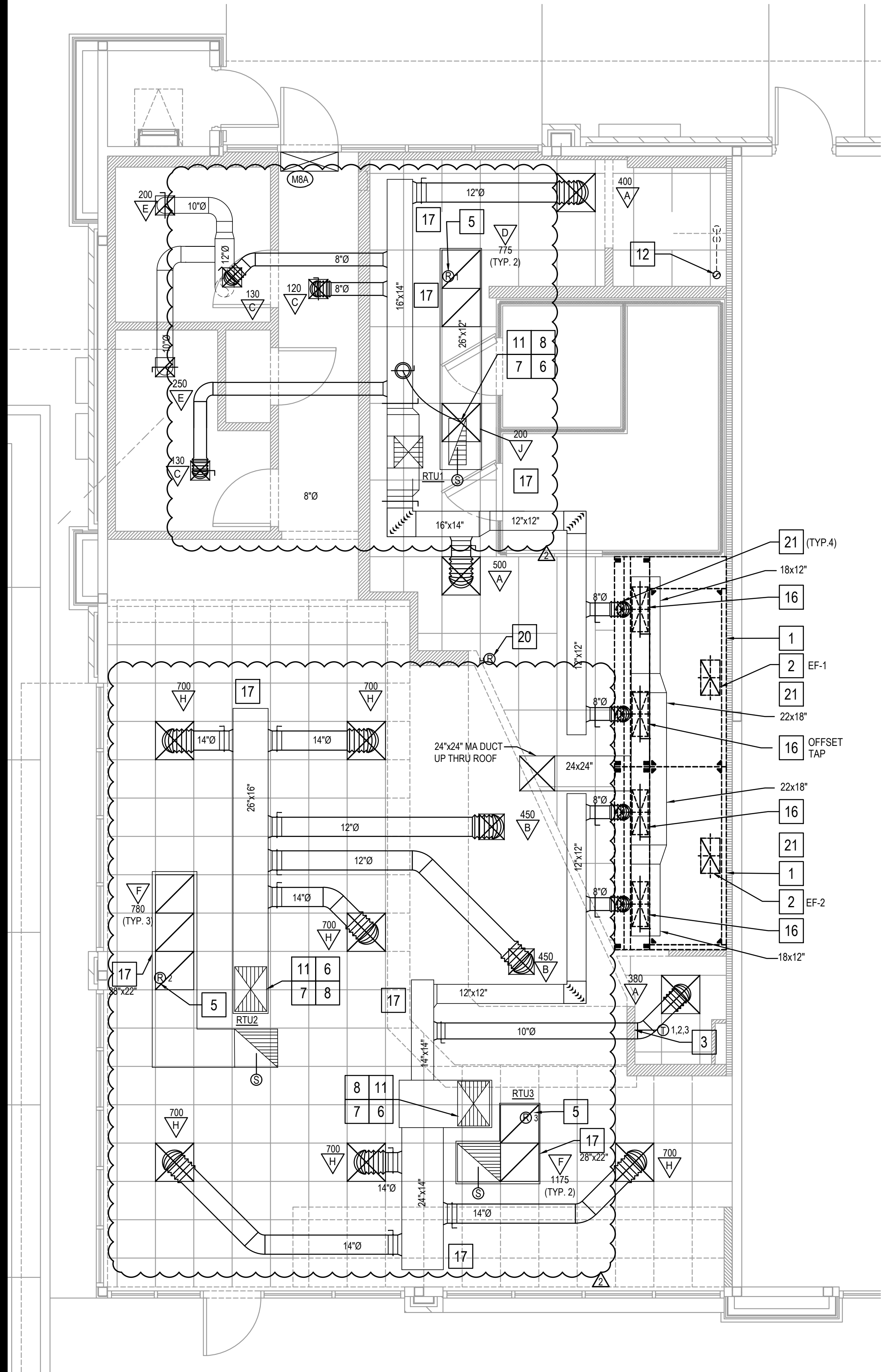
PANDA EXPRESS

TRUE WARM AND WELCOME 2300
500 ASHFORD PARKWAY
DUNWOODY, GEORGIA 30338

M-000

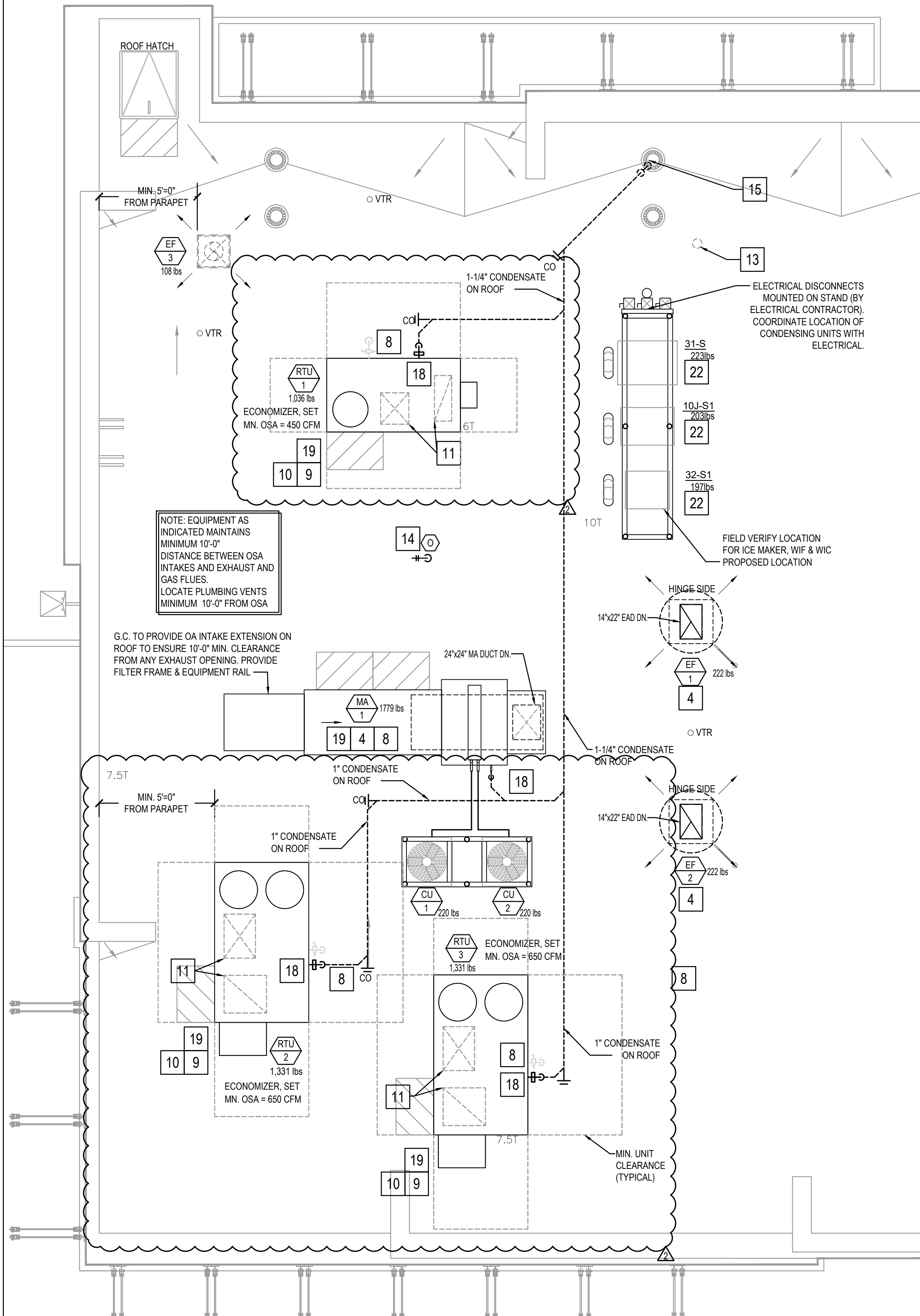
MECHANICAL NOTES
SPECIFICATIONS & SCHEDULES

TRUE WARM & WELCOME 2300 R4



HVAC FLOOR PLAN 2

Scale: 1/4"=1'-0" M-100



HVAC ROOF PLAN 1

Scale: 1/4"=1'-0" M-100

MECHANICAL KEY NOTES:

1. INSTALL GREASE EXHAUST HOODS FURNISHED BY PANDA. HOOD SHALL BE ONE CAPTIVEAIRE 4824-ND HOOD EXHAUSTING 2,750 CFM. SUPPORT FROM STRUCTURE ABOVE WITH UNISTRUT AND ALL THREAD ROD. MOUNT HOOD PER LOCAL CODE REQUIREMENTS. REFER TO PLAN FOR HOOD CONNECTIONS. SEE CODE COMPLIANCE DRAWINGS ON SHEET M-500 AND CAPTIVEAIRE HOOD DRAWINGS FOR ADDITIONAL REQUIREMENTS. (TWO SECTIONS TOTAL).
2. PROVIDE AND INSTALL 22"x14" GREASE EXHAUST DUCT, OFFSET AS REQUIRED TO COORDINATE WITH STRUCTURE, FROM INLET OF ROOF MOUNTED GREASE EXHAUST FAN. CONNECT TO EXHAUST HOOD COLLAR, FIELD VERIFY. WRAP WITH THERMAL CERAMIC FIREMASTER DUCT WRAP+ OR EQUAL. FABRICATE DUCT FROM 16 GAUGE STEEL WITH WELDED SEAM CONSTRUCTION SEAL TO THE ROOF CURB WITH FIRE CAULKING. SEE HOOD DETAIL. DRAWINGS ON SHEET M-500 AND CAPTIVEAIRE DRAWINGS.
3. MOUNT THERMOSTAT AT MANAGER STATION. REFER TO DETAIL #1 ON SHEET E-200. SEE DWG FOR EXACT LOCATION OF REMOTE SENSOR. SEE ROOFTOP UNIT SCHEDULE AND TEMPERATURE CONTROL DIAGRAM DETAIL 5 ON SHEET M-501 FOR ADDITIONAL INFORMATION. CONFIGURE THE LENNOX CS7500 STAT FOR A 20K SENSOR THROUGH THE THERMOSTAT MENU.
4. INSTALL GREASE EXHAUST FAN WITH CURB (EF-1 AND EF-2) AND MAKE UP AIR (MA-1) FURNISHED BY PANDA. COORDINATE LOCATION OF UNIT WITH ARCHITECTURAL AND STRUCTURAL DRAWINGS.
5. PROVIDE AND INSTALL A REMOTE SENSOR FOR ROOFTOP UNIT AT THIS LOCATION. MOUNT REMOTE SENSOR IN RETURN AIR DUCTWORK. SEE TEMPERATURE CONTROL DIAGRAM ON SHEET M-501 FOR ADDITIONAL INFORMATION.
6. PROVIDE AND INSTALL DUCT MOUNTED SMOKE DETECTOR AT MAIN SUPPLY AIR DUCT PER UMC, SEC. 609, OR AT RETURN AIR DUCT PER IMC, SECTION 606.2.1. DETECTORS SHALL BE INTERLOCKED TO SHUT DOWN ROOFTOP UNITS UPON DETECTION OF SMOKE. PROVIDE ALL CONTROL WIRING NECESSARY TO PERFORM THIS OPERATION.
7. PROVIDE FLEXIBLE CONNECTION BETWEEN UNIT. ROUTE DUCT THRU ROOF CURB AND TRUSS.
8. FOR GAS OR WATER CONNECTION, SEE PLUMBING DRAWINGS.
9. PROVIDE FABRICATED CURB PER MANUFACTURERS REQUIREMENTS AND COORDINATE EXACT LOCATION OF UNIT IN FIELD. SHIM ROOF CURB LEVEL FOR PROPER CONDENSATE DRAINAGE.
10. FURNISH AND INSTALL ALL TEMPERATURE CONTROL WIRING FROM THE UNIT TO THE THERMOSTAT OR OTHER CONTROL DEVICES.
11. FULL SIZE SA AND RA UP TO RTU. TRANSITION AS REQUIRED TO RTU INLET/OUTLET SIZE.
12. PVC COMBINATION VENT AND COMBUSTION AIR PIPING PROVIDED AND INSTALLED BY PLUMBING FOR SEALED COMBUSTION WATER HEATER. REFER TO PLUMBING PLANS.
13. WATER HEATER CONCENTRIC VENT TERMINATION. REFER TO PLUMBING PLANS. OFFSET AS REQUIRED FOR CLEARANCE FROM AIR INTAKES.
14. ROOF HYDRANT. REFER TO PLUMBING DRAWINGS.
15. ROUTE CONDENSATE DRAIN LINE TO EXISTING MAIN ROOF DRAIN.
16. MA DUCT (BELOW MAKE UP AIR) CONNECT TO 28"x10" RISER FROM SUPPLY PLENUM. 1,100 CFM.
17. PROVIDE DUCT EXTERNAL INSULATION WRAP AT TRUNK, TYPICAL.
18. CONDENSATE DRAIN LINE ON ROOF. REFER TO DETAIL 16/P-500.
19. PROVIDE AND INSTALL ALL EQUIPMENT WITH MANUFACTURER'S RECOMMENDED CLEARANCES FOR MAINTENANCE. MAINTAIN MINIMUM CLEARANCES TO ELECTRICAL AND SERVICE ACCESS PANELS AND DISCONNECTS.
20. ROOM AIR SENSOR FOR CAPTIVEAIRE HOOD ON BACK OF MENU BOARD WALL, AS CLOSE TO CEILING AS POSSIBLE.
21. 8" CONNECTION TO HOOD RTU SUPPLY PLENUM COLLAR. BALANCE TO 260 CFM.
22. PROVIDE AND INSTALL ACR TUBING, SIZED AND ROUTED PER MANUFACTURER'S INSTRUCTIONS. FROM REMOTE REFRIGERANT CONDENSERS TO WALK-IN COOLER AND FREEZER FAN COILS. AND ICE MAKER. TEST, PURGE, EVACUATE AND CHARGE LINES AS REQUIRED BY MANUFACTURER. (START-UP FOR ICE MAKER IS BY OWNER'S REPRESENTATIVE). ROUTE REFRIGERANT LINES THROUGH "ATR HUB" PROVIDED AND INSTALLED BY GC (REFER TO ARCH. ISO 3 AND 4, SHEET A-108).

NOTE: MAXIMUM FLEXIBLE DUCT LENGTH ALLOWED SHALL BE PER LOCAL CODE AND AMENDMENTS. IMC HAS NO LIMITATIONS FOR FLEXIBLE DUCT LENGTHS.



PANDA RESTAURANT GROUP INC.
1683 Walnut Grove Ave.
Rosemead, California
91770
Telephone: 626.799.9898
Facsimile: 626.372.8288

All ideas, designs, arrangement and plans indicated or represented by this drawing are the property of Panda Express Inc. and were created for use on this specific project. None of these ideas, designs, arrangements or plans may be used by or disclosed to any person, firm, or corporation without the written permission of Panda Express Inc.

REVISIONS:

05.11.21 ISSUE FOR BID

ISSUE DATE:

01.15.2021 ISSUE FOR PERMIT
05.11.2021 ISSUE FOR BID

DRAWN BY:

PANDA PROJECT #: - S4-21-D7792
C&P PROJECT #: - 2190853

Cuhaci & Peterson
Architects Engineers Planners
2600 Maitland Center Pkwy. Maitland, FL 32751
P (407) 661-9100
F (407) 661-9101
www.c&p.com
Florida Certified Professional AIA/CES/BCES

05.11.2021

PANDA EXPRESS

TRUE WARM AND WELCOME 2300
500 ASHFORD PARKWAY
DUNWOODY, GEORGIA 30338

M-100

H.V.A.C. FLOOR PLAN &
H.V.A.C. ROOF PLAN

TRUE WARM & WELCOME 2300 R4

HOOD INFORMATION - JOB#4642694

HOOD NO	TAG	MODEL	MANUFACTURER	LENGTH	MAX COOKING TEMP	TYPE	APPLIANCE DUTY	DESIGN CFM/FT	TOTAL EXH CFM	EXHAUST PLENUM RISER(S)							MUA CFM	AC CFM	HOOD CONSTRUCTION	HOOD CONFIG	
										WIDTH	LENG	HEIGHT	DIA	CFM	VEL	SP				END TO END	ROW
1		4824 ND-2-ACSP-F	CAPTIVEAIRE	9' 3.5'	600 DEG	I	HEAVY	296	2750	12"	22"	4'		2750	1500	-0.448'	2200	412	430 SS WHERE EXPOSED	LEFT	ALONE
2		4824 ND-2-ACSP-F	CAPTIVEAIRE	9' 3.5'	600 DEG	I	HEAVY	296	2750	12"	22"	4'		2750	1500	-0.448'	2200	412	430 SS WHERE EXPOSED	RIGHT	ALONE

HOOD INFORMATION

HOOD NO	TAG	TYPE	FILTER(S)			QTY	LIGHT(S)			UTILITY CABINET(S)				FIRE SYSTEM PIPING	HOOD HANGING WEIGHT
			HEIGHT	LENGTH	EFFICIENCY @ 7 MICRONS		TYPE	WIRE GUARD	LOCATION	SIZE	FIRE SYSTEM TYPE	SIZE	ELECTRICAL MODEL #	SWITCHES QUANTITY	
1		SS BAFFLE WITH HANDLES	6	20"	16"	30%	5	L55 SERIES E26	NO	LEFT	20"x48"x24"		SC-321110MA-SEP	1 LIGHT 1 FAN	YES 630 LBS
2		SS BAFFLE WITH HANDLES	6	20"	16"	30%	5	L55 SERIES E26	NO	WALL MNT	12"x54"x24"	ANSUL R102	3.0/3.0		YES 503 LBS

HOOD OPTIONS

HOOD NO	TAG	OPTION
2		RIGHT END STANDOFF (FINISHED) 3' WIDE 48" LONG.

PERFORATED SUPPLY PLENUM(S)

HOOD NO	TAG	POS	LENGTH	WIDTH	HEIGHT	TYPE	RISER(S)			
							WIDTH	LENG	DIA	CFM
1		Front	131.5"	22"	6"	MUA	10"	28"		1099
						MUA	10"	28"		1099
						AC			8"	206
						AC			8"	206
2		Front	114.5"	22"	6"	MUA	10"	28"		1100
						MUA	10"	28"		1100
						AC			8"	206
						AC			8"	206

WALL-MOUNT UTILITY CABINET

HOOD NO	LOCATION	SIZE	UTILITY CABINET(S)				WEIGHT
			FIRE SYSTEM TYPE	SIZE	ELECTRICAL MODEL #	SWITCHES QUANTITY	
2	WALL MNT	12"x54"x24"	ANSUL R102	3.0/3.0			214.00 LBS

NOTE: UNLESS OTHERWISE STATED, PANDA RESTAURANT GROUP SHALL PROVIDE ALL EQUIPMENT ON THE FOLLOWING CAPTIVEAIRE SHEETS, INCLUDING HOODS, FIRE SYTEM, EXHAUST FANS, SUPPLY FAN, BATHROOM FAN AND ELECTRICAL INTERLOCK PACKAGE

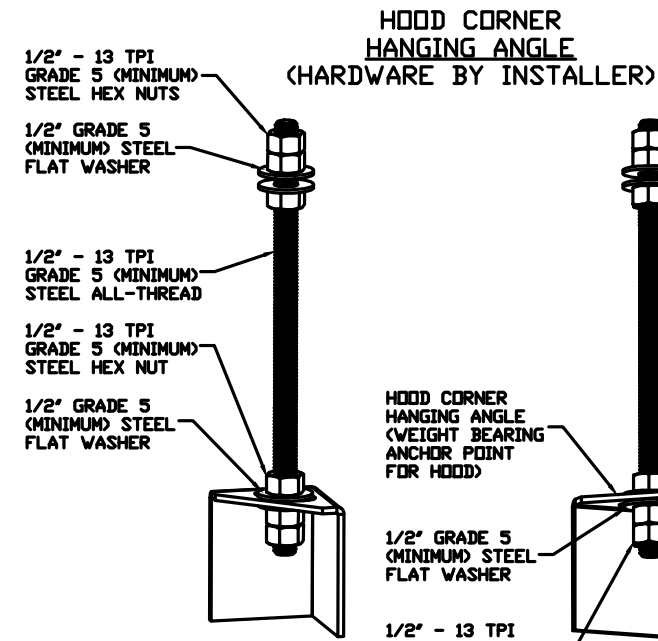
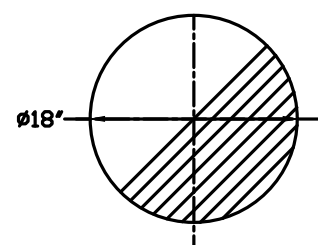
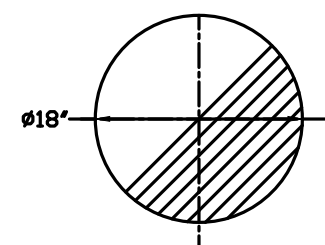
ANSUL GAS VALVE:

THE ANSUL GAS VALVE IS PROVIDED BY CAPTIVEAIRE SYSTEMS. CONTACT OUR OFFICE WITH THE VALVE SIZE 3 DAYS IN ADVANCE OF WHEN IT IS NEEDED ON SITE.

FOR QUESTIONS CALL THE CAPTIVEAIRE SOUTHERN CALIFORNIA OFFICE

3002 DOW AVENUE, SUITE 410
TUSTIN, CA 92780
TEL: 714-957-1500 EMAIL: REG86@CAPTIVEAIRE.COM

PRE-FABRICATED DOUBLE WALL ROUND DUCTWORK IS AVAILABLE AS AN ALTERNATE HVAC CONTRACTOR OR GENERAL CONTRACTOR TO CONTACT REGION 86 @ 714-957-1500 OR REG86@CAPTIVEAIRE.COM FOR DESIGN AND PRICING

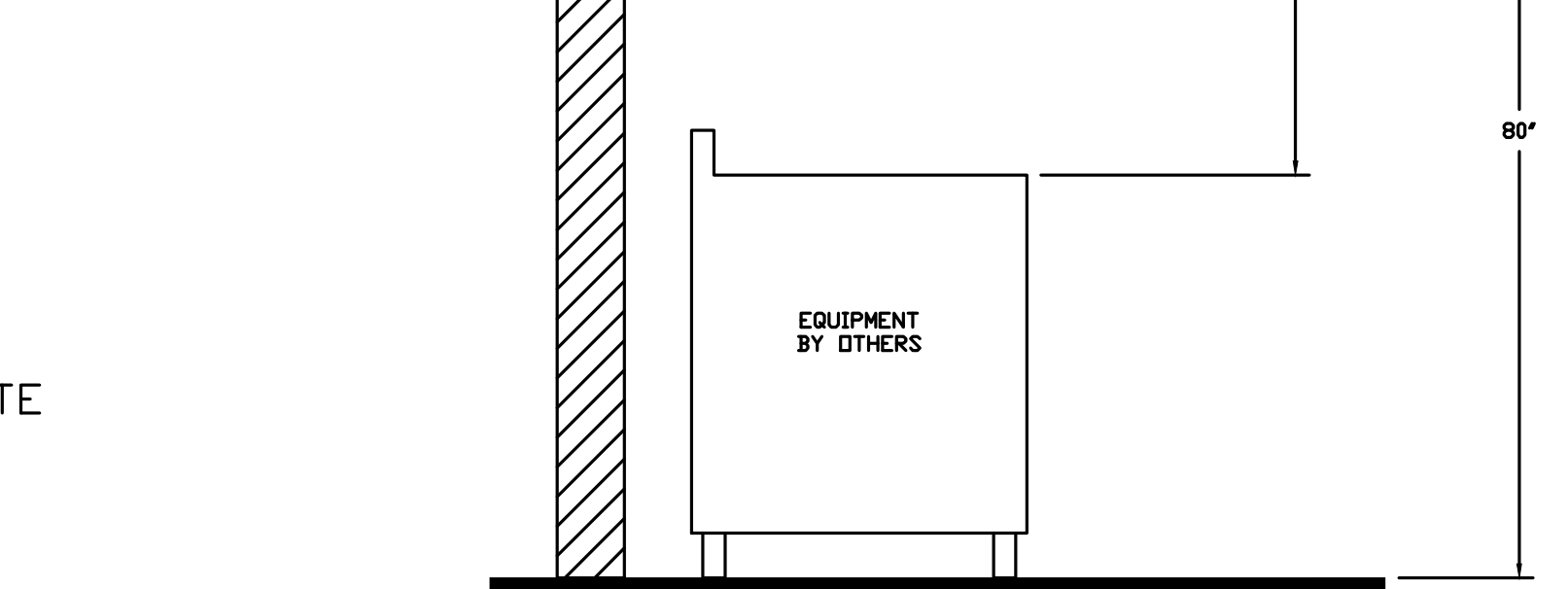


ASSEMBLY INSTRUCTIONS

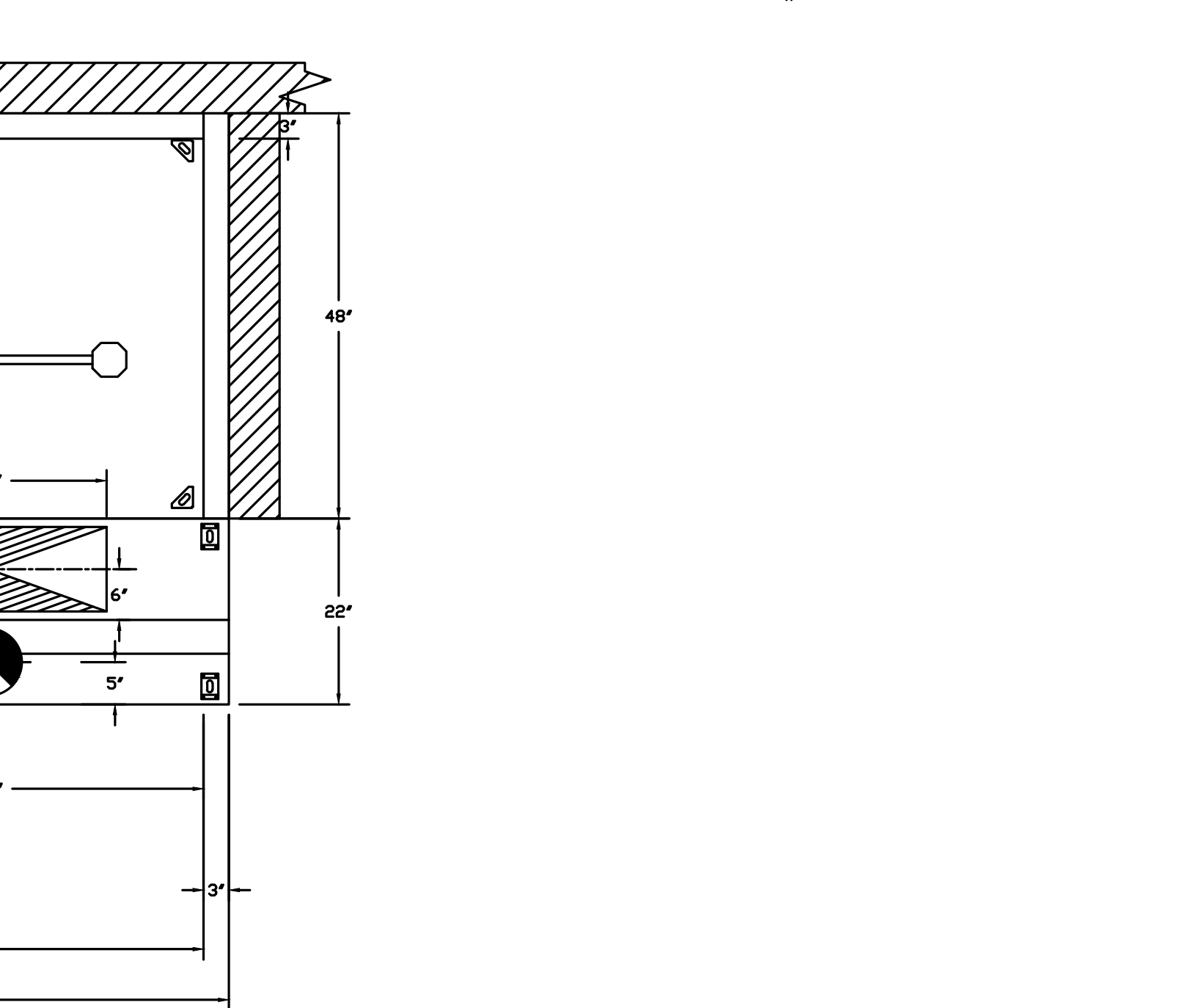
HANGING ANGLE MUST BE SUPPORTED WITH 1/2" - 13 TPI GRADE 5 (MINIMUM) ALL-THREAD. SANDWICH HANGING ANGLES AND CEILING ANCHOR POINTS WITH 1/2" GRADE 5 (MINIMUM) STEEL FLAT WASHERS AND 1/2" - 13 TPI GRADE 5 (MINIMUM) HEX NUTS AS SHOWN. MUST USE DOUBLED HEX NUT CONFIGURATION BENEATH HOOD HANGING ANGLES AND ABOVE CEILING ANCHORS. MAINTAIN 1/4" OF EXPOSED THREADS BENEATH BOTTOM HEX NUT. TORQUE ALL HEX NUTS TO 57 FT-LBS.

IT IS THE RESPONSIBILITY OF THE ARCHITECT/OWNER TO ENSURE THAT THE HOOD CLEARANCE FROM LIMITED-COMBUSTIBLE AND COMBUSTIBLE MATERIALS IS IN COMPLIANCE WITH LOCAL CODE REQUIREMENTS.

SECTION VIEW - MODEL 4824ND-2-ACSP-F HOOD - #1



SECTION VIEW - MODEL 4824ND-2-ACSP-F HOOD - #1



PLAN VIEW - HOOD #1

9' 3.50" LONG 4824ND-2-ACSP-F

ACSPS SHIPS LOOSE FOR FIELD INSTALLATION

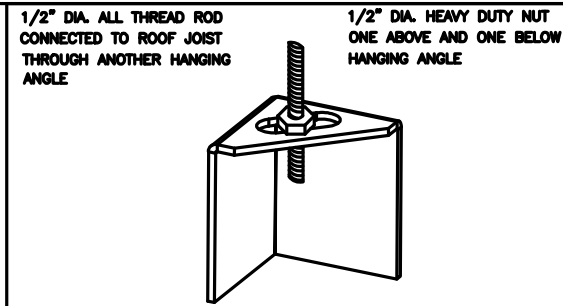
PLAN VIEW - HOOD #2

9' 3.50" LONG 4824ND-2-ACSP-F

ACSPS SHIPS LOOSE FOR FIELD INSTALLATION

PATENT NUMBERS

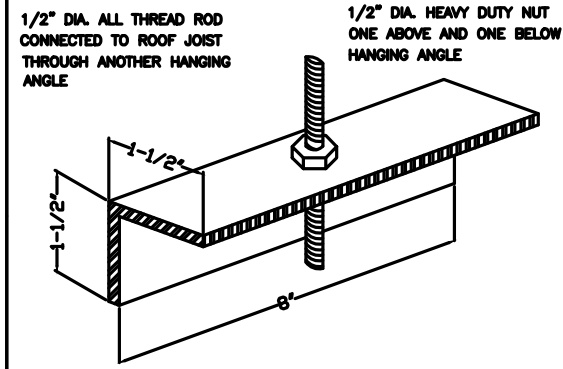
AC-PSP (UNITED STATES) - US PATENT 7963830 B2.
AC-PSP WALL (CANADA) - CA PATENT 2820509.
AC-PSP ISLAND (CANADA) - CA PATENT 2520330.



ND-2 HANGING ANGLE DETAIL

HOOD STYLE	DIM FROM REAR	DIM FROM FRONT (24\"/>
------------	---------------	------------------------

ND-2 HANGING ANGLE LOCATIONS



ND HANGING ANGLE DETAIL

HOOD STYLE	DIM FROM REAR	DIM FROM FRONT (24\"/>
------------	---------------	------------------------

ND HANGING ANGLE LOCATIONS



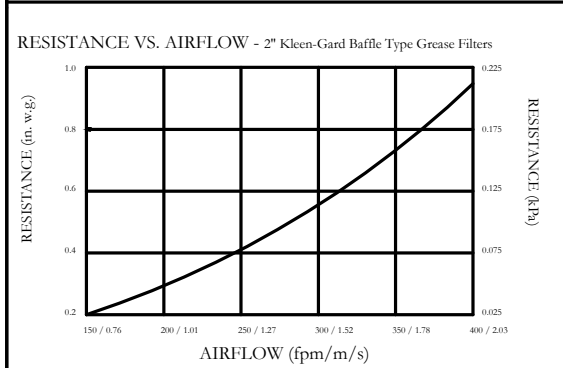
BUILDING CODES

CAPTIVE-AIRE HOODS HAVE OPTIONAL CLEARANCE	
REDUCTION SYSTEMS AVAILABLE AS FOLLOWS:	
MATERIAL	CLEARANCE REDUCTION SYSTEM
NON-COMBUSTIBLE	NONE REQUIRED
LIMITED-COMBUSTIBLE	3" UNINSULATED STANDOFF
COMBUSTIBLE	3" INSULATED STANDOFF

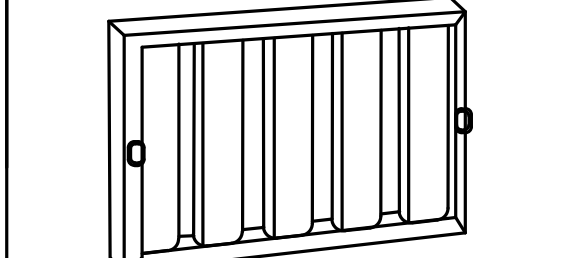
CLEARANCE TO COMBUSTIBLES

- GENERAL NOTES:
- ELECTRICAL WIRING TO GAS MOTOR CONTROLS (MOTOR STARTERS, FAN SWITCHES, FAN DISCONNECTS, RELAYS, ETC.) BY OTHERS.
 - FINE CHASE BY OTHERS, IF REQUIRED.
 - ALL PHASES OF INSTALLATION SHALL COMPLY WITH NFPA 96.
 - WRITTEN MEASUREMENTS HAVE PRECEDENCE OVER SCALE.
 - PROVIDE CLEARDOUTS IN EXHAUST AIR DUCTS AS INDICATED TO ALLOW CLEANING AT ALL BENDS AND HORIZONTAL RUNS.
 - EXHAUST DUCT TO BE 16 GA. GALV STEEL. ALL SEAMS AND JOINTS TO HAVE A LIQUID TIGHT CONTINUOUS EXTERIOR GULF.
 - FAN TO HAVE A MINIMUM OF 10 FT. OF CLEARANCE FROM THE OUTLET TO ADJACENT BUILDINGS, PROPERTY LINES, AIR INTAKES OR 8 FT. VERTICAL CLEARANCE FOR WPAAS.
 - HORIZONTAL EXHAUST DUCT TO SLOPE NOT LESS THAN 1/4" PER FEET TOWARD HOOD FOR DUCT LESS THAN 75' LONG.
 - 1" PER FOOT SLOPE FOR DUCT LONGER THAN 75'.
 - HOOD TO OVERHANG COOKING EQUIPMENT 6" ON ALL SIDES.
 - EXHAUST DUCT TO BE PROTECTED FROM COMBUSTIBLES PER NFPA96 AND LOCAL CODE.
 - BUILDING PRESSURE SHALL NOT EXCEED 0.02" WATER COLUMN AT EXTERIOR DOORS.
 - KITCHEN SHALL BE BALANCED TO BE NEGATIVE WITH RESPECT TO THE DINING ROOM.

GENERAL NOTES



Kleen-Gard Baffle Type Filters are UL Classified Grease Extracting Filters.



Kleen-Gard Baffle Type Filters are UL Classified Grease Extracting Filters.
MEA # 168-78-M Aluminum
MEA # 247-96-L Stainless Steel

FILTER DETAIL

REVISIONS

NO.	DESCRIPTION	DATE
1		
2		
3		
4		

www.captiveaire.com
reg86@captiveaire.com

3002 Dow Ave., Suite 410, Tustin, CA 92780 PHONE: (714) 957-1500 FAX: (919) 227-5275 EMAIL: reg86@captiveaire.com

Southern California Office

Panda Express - Dunwoody GA

Dunwoody, GA, 31146

DATE: 12/7/2020

DWG.#: 4642694

DRAWN BY: AH-86

SCALE: 3/4" = 1'-0"

MASTER DRAWING

SHEET NO. 1



PANDA RESTAURANT GROUP INC.
1683 Walnut Grove Ave.
Rosemead, California 91770
Telephone: 626.799.9898
Facsimile: 626.372.8288

All ideas, designs, arrangement and plans indicated or represented by this drawing are the property of Panda Express Inc. and were created for use on this specific project. None of these ideas, designs, arrangements or plans may be used by or disclosed to any person, firm, or corporation without the written permission of Panda Express Inc.

REVISIONS:

NO.	DESCRIPTION	DATE
1	01.15.2021 ISSUE FOR PERMIT	
2	05.11.2021 ISSUE FOR BID	

ISSUE DATE:

1 01.15.2021 ISSUE FOR PERMIT
2 05.11.2021 ISSUE FOR BID

DRAWN BY:

PANDA PROJECT #: - S4-21-D7792
C&P PROJECT #: - 2190853



2600 Maitland Center Pkwy. Maitland, FL 32751
P (407) 661-9100
F (407) 661-9101
www.culaci.com
Florida Certified Consultant AAA (2005)

05.11.2021

Panda Express - Dunwoody GA

Dunwoody, GA, 31146

DATE: 12/7/2020

DWG.#: 4642694

DRAWN BY: AH-86

SCALE: 3/4" = 1'-0"

MASTER DRAWING

SHEET NO. 1

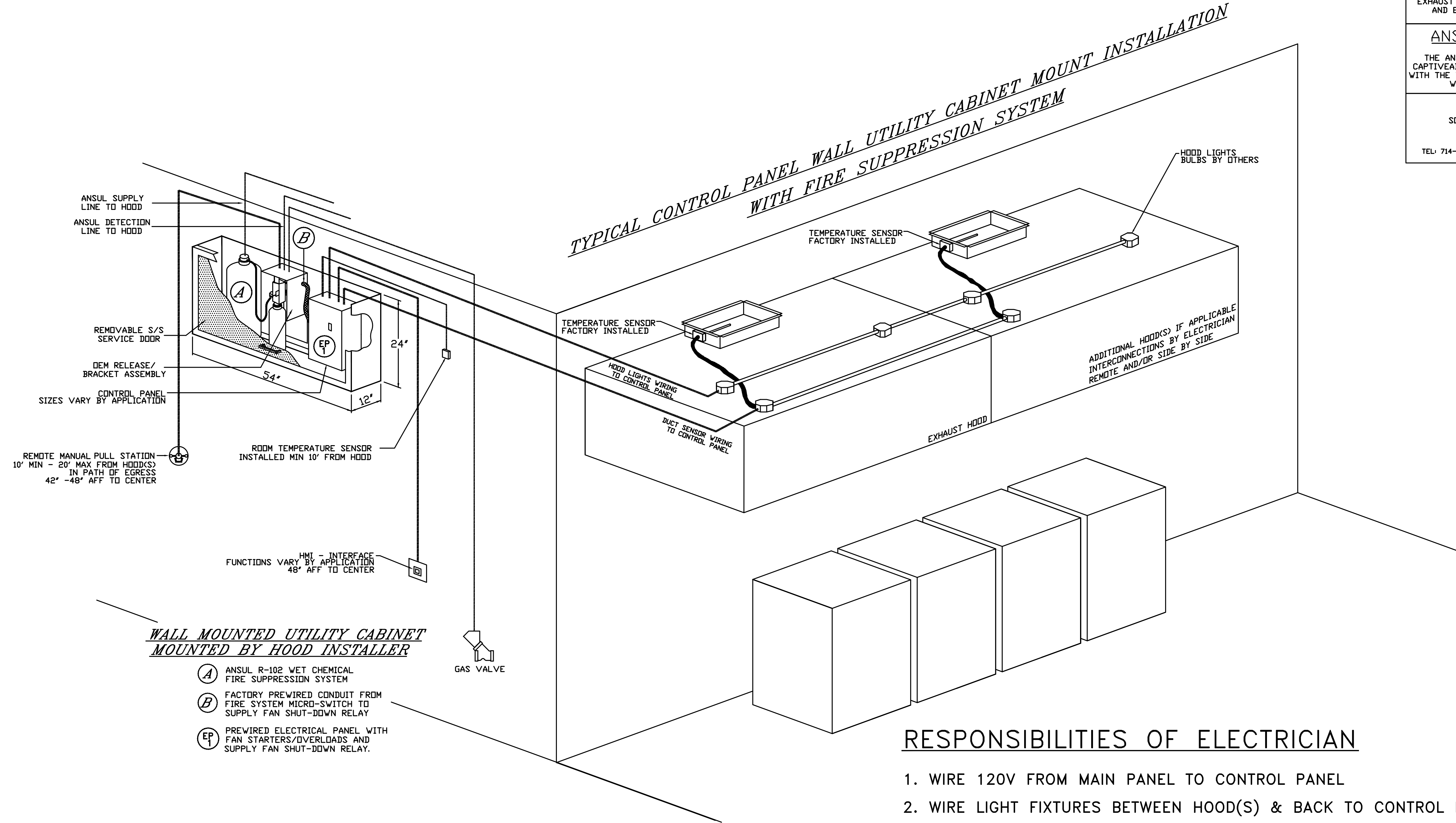
PANDA EXPRESS

TRUE WARM AND WELCOME 2300
500 ASHFORD PARKWAY
DUNWOODY, GEORGIA 30338

M-400

HOOD DETAIL PLAN

TRUE WARM & WELCOME 2300 R4



NOTE: UNLESS OTHERWISE STATED, PANDA RESTAURANT GROUP SHALL PROVIDE ALL EQUIPMENT ON THE FOLLOWING CAPTIVEAIRE SHEETS, INCLUDING: HOODS, FIRE SYTEM, EXHAUST FANS, SUPPLY FAN, BATHROOM FAN AND ELECTRICAL INTERLOCK PACKAGE

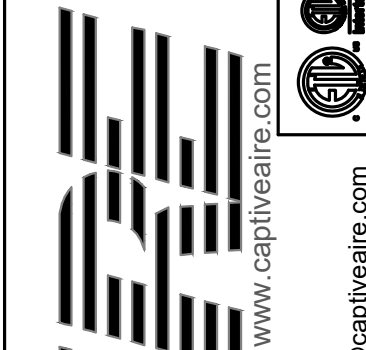
ANSUL GAS VALVE:

THE ANSUL GAS VALVE IS PROVIDED BY CAPTIVEAIRE SYSTEMS. CONTACT OUR OFFICE WITH THE VALVE SIZE 3 DAYS IN ADVANCE OF WHEN IT IS NEEDED ON SITE.

FOR QUESTIONS CALL THE CAPTIVEAIRE SOUTHERN CALIFORNIA OFFICE

3002 DOW AVENUE, SUITE 410
TUSTIN, CA 92780
TEL: 714-957-1500 EMAIL: REG86@CAPTIVEAIRE.COM

REVISIONS	
DESCRIPTION	DATE



CAPTIVEAIRE

Southern California Office

Panda Express - Dunwoody GA
Dunwoody, GA, 31146

DATE: 12/7/2020
DWG.#: 4642694
DRAWN BY: AH-86
SCALE: 3/4" = 1'-0"
MASTER DRAWING

SHEET NO.
2

TERMINAL BLOCK WIRING DETAILS CAN BE FOUND ON ELECTRICAL WIRING DIAGRAMS

RESPONSIBILITIES OF ELECTRICIAN

1. WIRE 120V FROM MAIN PANEL TO CONTROL PANEL
2. WIRE LIGHT FIXTURES BETWEEN HOOD(S) & BACK TO CONTROL PANEL
3. WIRE TEMPERATURE SENSOR(S) FROM EXHAUST COLLARS TO CONTROL PANEL
4. MOUNT & WIRE ROOM SENSOR TO CONTROL PANEL
5. WIRE FAN POWER FROM MAIN PANEL THROUGH CONTROL PANEL TO FAN(S)
6. WIRE SHUNT COIL TO CONTROL PANEL
7. WIRE GAS VALVE (IF APPLICABLE) TO CONTROL PANEL (120V FROM CONTROL PANEL)

ADDITIONAL RESPONSIBILITIES IF APPLICABLE

1. IF MULTIPLE FIRE SYSTEMS ON SINGLE CONTROL PANEL, THE FOLLOWING MUST OCCUR
 - A. ANSUL AUTOMAN MICROSWITCHES TO BE WIRED IN SERIES BACK TO CONTROL PANEL
 - B. ANSUL CATRIDGE MICROSWITCHES TO BE WIRED IN SERIES BACK TO CONTROL PANEL

RESPONSIBILITIES OF ALARM CONTRACTOR

1. WIRE ANSUL ALARM MICROSWITCH TO BUILDING ALARM PANEL



PANDA RESTAURANT GROUP INC.
1683 Walnut Grove Ave.
Rosemead, California
91770
Telephone: 626.799.9898
Facsimile: 626.372.8288

All ideas, designs, arrangement and plans indicated or represented by this drawing are the property of Panda Express Inc. and were created for use on this specific project. None of these ideas, designs, arrangements or plans may be used by or disclosed to any person, firm, or corporation without the written permission of Panda Express Inc.

REVISIONS:

ISSUE DATE:

1	01.15.2021 ISSUE FOR PERMIT
2	05.11.2021 ISSUE FOR BID

DRAWN BY:

PANDA PROJECT #: - S4-21-D7792
C&P PROJECT #: - 2190853



05.11.2021

PANDA EXPRESS

TRUE WARM AND WELCOME 2300
500 ASHFORD PARKWAY
DUNWOODY, GEORGIA 30338

M-401

HOOD DETAIL PLAN

TRUE WARM & WELCOME 2300 R4

EXHAUST FAN INFORMATION – JOB#4642694

FAN UNIT NO	TAG	QTY	FAN UNIT MODEL #	MANUFACTURER	CFM	ESP	RPM	MOTOR ENCL	HP	BHP	Ø	VOLT	FLA	DISCHARGE VELOCITY	WEIGHT (LBS)	SONES
1		1	EABDU18	ECON-AIR	2750	1.250	1132	DDP	2.000	1.1080	3	208	5.9	635 FPM	184	13.9
2		1	EABDU18	ECON-AIR	2750	1.250	1132	DDP	2.000	1.1080	3	208	5.9	635 FPM	184	13.9
3		1	EABDCR7	ECON-AIR	450	0.250	1128	DDP	0.250	0.0850	1	115	4.8		90	6.3

CONDENSER DETAILS

FAN UNIT NO	TAG	FAN UNIT MODEL #	CONDENSER NO	TONNAGE	VOLTAGE	PHASE	FREQUENCY	MCA	RLA	MAX FUSE SIZE	MIN WIRE SIZE	SEER
4		EA3-D.500-G18-MPU	1	5	208-230	3 PHASE	60 HZ	21.4 AMPS	17.4 AMPS	30 AMPS	10 AWG	14
			2	5	208-230	3 PHASE	60 HZ	21.4 AMPS	17.4 AMPS	30 AMPS	10 AWG	14

MUA FAN INFORMATION – JOB#4642694

FAN UNIT NO	TAG	QTY	FAN UNIT MODEL #	BLOWER	HOUSING	MIN CFM	DESIGN CFM	ESP	RPM	MOTOR ENCL	HP	BHP	Ø	VOLT	FLA	MCA	MDCP	WEIGHT (LBS)	SONES
4		1	EA3-D.500-G18-MPU	G18-PB	A3-D.500	3500	4398	0.750	818	DDP,PREMIUM	5.000	2.3860	3	208	15.0	18.8A	30A	1913	14.5

COILS – JOB#4642694

FAN UNIT NO	TAG	COIL TYPE	DESIGN CFM	COOLING										HEATING									
				ENTERING DB TEMP	ENTERING WB TEMP	LEAVING DB TEMP	LEAVING WB TEMP	ENTERING FLUID TEMP	LEAVING FLUID TEMP	FLUID FLOW RATE	PERCENT GLYCOL	TOTAL CAPACITY	SENSIBLE CAPACITY	LATENT CAPACITY	ENTERING DB TEMP	LEAVING DB TEMP	ENTERING FLUID TEMP	LEAVING FLUID TEMP	FLUID FLOW RATE	PERCENT GLYCOL	STEAM PRESSURE	TOTAL CAPACITY	SENSIBLE CAPACITY
4		DX	4398	95.0°F	78.0°F	80.4°F	71.2°F	---	---	---	---	118.7 MBH	67.7 MBH	51.0 MBH	---	---	---	---	---	---	---	---	---

GAS FIRED MAKE-UP AIR UNIT(S)

FAN UNIT NO	TAG	INPUT BTUs	OUTPUT BTUs	TEMP RISE	REQUIRED INPUT GAS PRESSURE	GAS TYPE	BURNER EFFICIENCY(%)
4		325868	299799	65°F	7 IN. W.C. – 14 IN. W.C.	NATURAL	92

FAN OPTIONS

FAN UNIT NO	TAG	QTY	DESCRIPTION
1		1	GREASE BOX.
			UPBLAST FAN WHEEL ACCESS PORT.
			GREASE BOX.
2		1	UPBLAST FAN WHEEL ACCESS PORT.
			I 15-BDD DAMPER.
4		1	AC INTERLOCK RELAY – 24VAC COIL.
			LOW FIRE START.
			INLET PRESSURE GAUGE, 0–35".
			MANIFOLD PRESSURE GAUGE, –5 TO 15" W.C.
			MOTORIZED BACKDRAFT DAMPER FOR A3-D HOUSING. MEETS AMCA CLASS 1A RATING.
			COOLING THERMOSTAT AND RELAY (NOT REQ FOR EVAP).
			DOWNTURN PLENUM FOR SIZE 3 DX COIL MODULE.
			SHIP CONDENSERS LOOSE. TWO CONDENSERS, THREE PHASE. CONDENSER DISCONNECTS SHIPPED LOOSE.
			FREEZESTAT (10).
			10 TON 2 CIRCUIT (5/5) MODULAR PACKAGED COOLING OPTION FOR SIZE 3 DF/EH MUA (3,600 TO 6,000 CFM), 208V/230V, 3 PHASE. COOLING THERMOSTAT OR PROGRAMMABLE STAT REQUIRED FOR PROPER OPERATION.
			SEPARATE 120V WIRING PACKAGE (REQUIRED AND USED ONLY FOR DCV OR PREWIRE WITH VFD) – THREE PHASE ONLY.

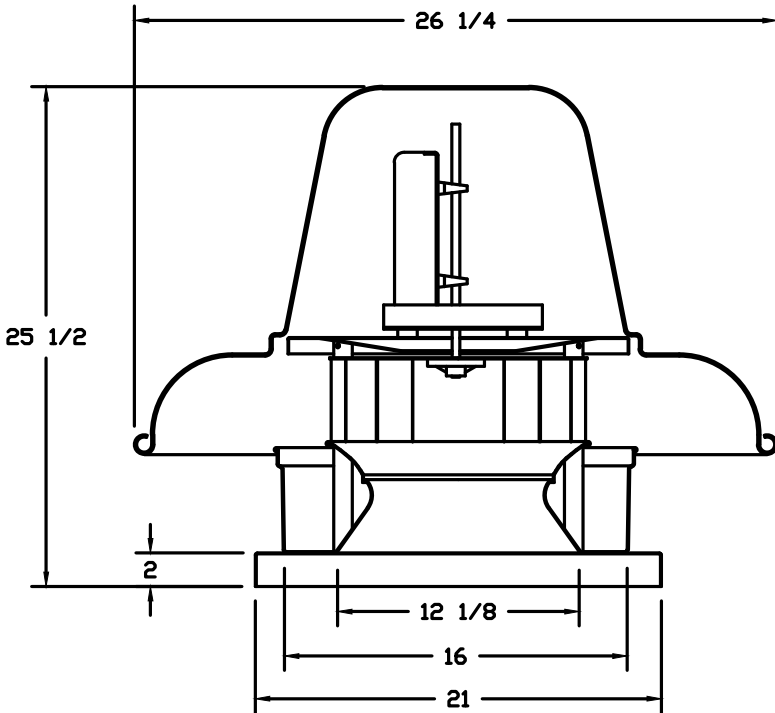
FAN ACCESSORIES

FAN UNIT NO	TAG	QTY	EXHAUST			SUPPLY			
			GREASE CUP	GRAVITY DAMPER	WALL MOUNT	SIDE DISCHARGE	GRAVITY DAMPER	MOTORIZED DAMPER	WALL MOUNT
1			YES						
2			YES						
3				YES					
4								YES	

CURB ASSEMBLIES

NO	ON FAN	WEIGHT	ITEM	SIZE
1	# 1	38 LBS	CURB	26.500"W X 26.500"L X 24.000"H VENTED HINGED.
2	# 2	38 LBS	CURB	26.500"W X 26.500"L X 24.000"H VENTED HINGED.
3	# 3	18 LBS	CURB	19.500"W X 19.500"L X 12.000"H .
4	# 4	114 LBS	CURB	35.000"W X 84.000"L X 20.000"H INSULATED.
	# 4		RAIL	6.000"W X 35.000"L X 20.000"H.

FAN #3 EABDCR7 – EXHAUST FAN

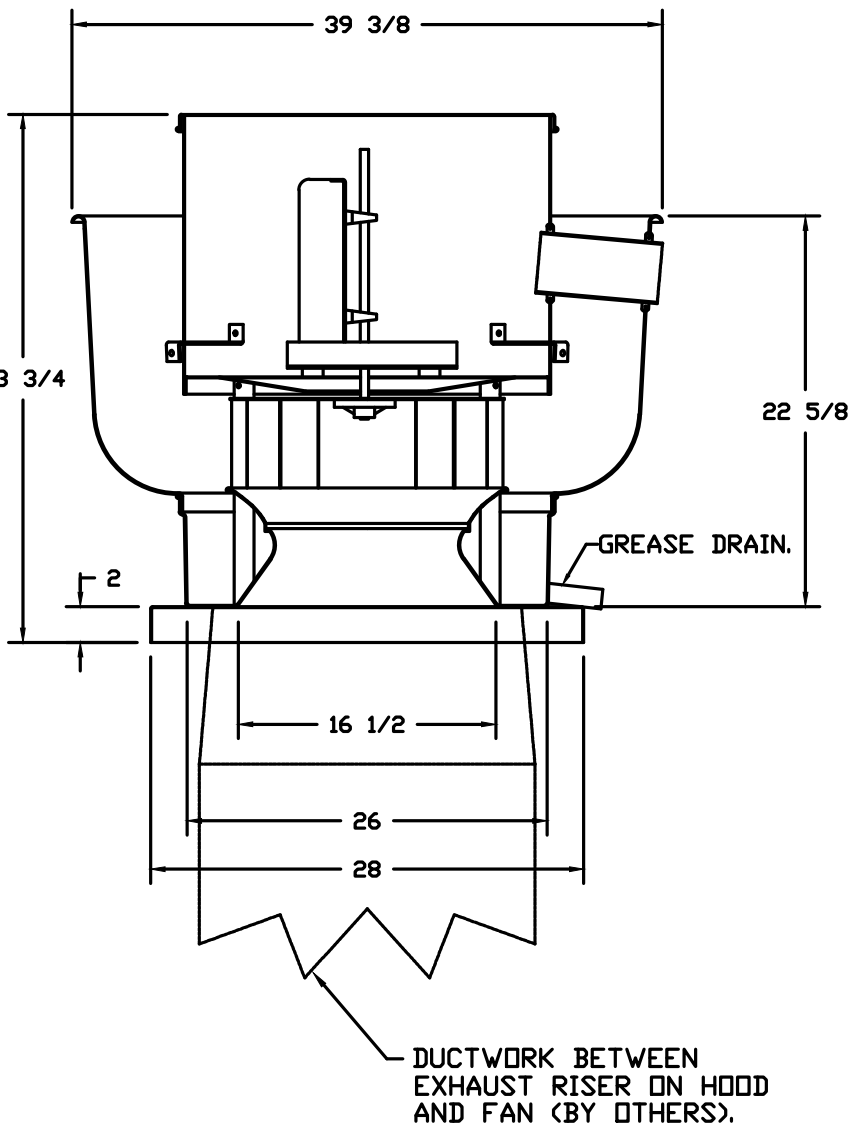


FEATURES:

- ROOF MOUNTED FANS.
- UL705.
- AMCA SOUND AND AIR CERTIFIED.
- WIRING FROM MOTOR TO DISCONNECT SWITCH.
- DISCONNECT SWITCH.
- STANDARD BIRD SCREEN.

OPTIONS:

- I 15-BDD DAMPER.



FEATURES:

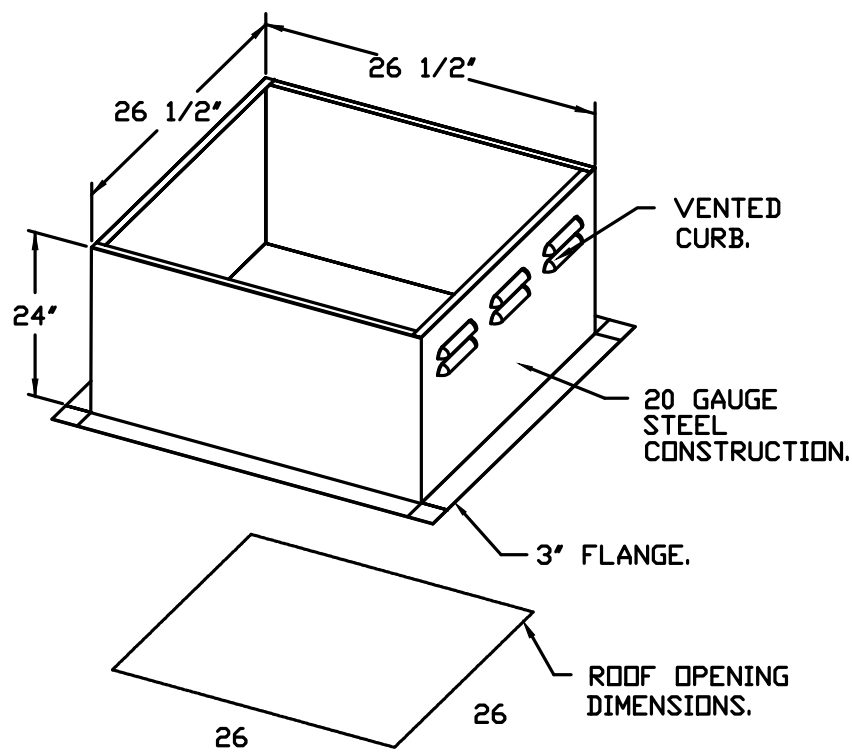
- ROOF MOUNTED FANS.
- RESTAURANT MODEL.
- UL705 AND UL762 AND ULC-S645.
- AMCA SOUND AND AIR CERTIFIED.
- WIRING FROM MOTOR TO DISCONNECT SWITCH.
- NEMA 3R SAFETY DISCONNECT SWITCH.
- HIGH HEAT OPERATION 300°F (149°C).
- GREASE CLASSIFICATION TESTING.

NORMAL TEMPERATURE TEST
EXHAUST FAN MUST OPERATE CONTINUOUSLY WHILE EXHAUSTING AIR AT 300°F (149°C) UNTIL ALL FAN PARTS HAVE REACHED THERMAL EQUILIBRIUM, AND WITHOUT ANY DETERIORATING EFFECTS TO THE FAN WHICH WOULD CAUSE UNSAFE OPERATION.

ABNORMAL FLARE-UP TEST
EXHAUST FAN MUST OPERATE CONTINUOUSLY WHILE EXHAUSTING BURNING GREASE VAPORS AT 600°F (316°C) FOR A PERIOD OF 15 MINUTES WITHOUT THE FAN BECOMING DAMAGED TO ANY EXTENT THAT COULD CAUSE AN UNSAFE CONDITION.

OPTIONS:

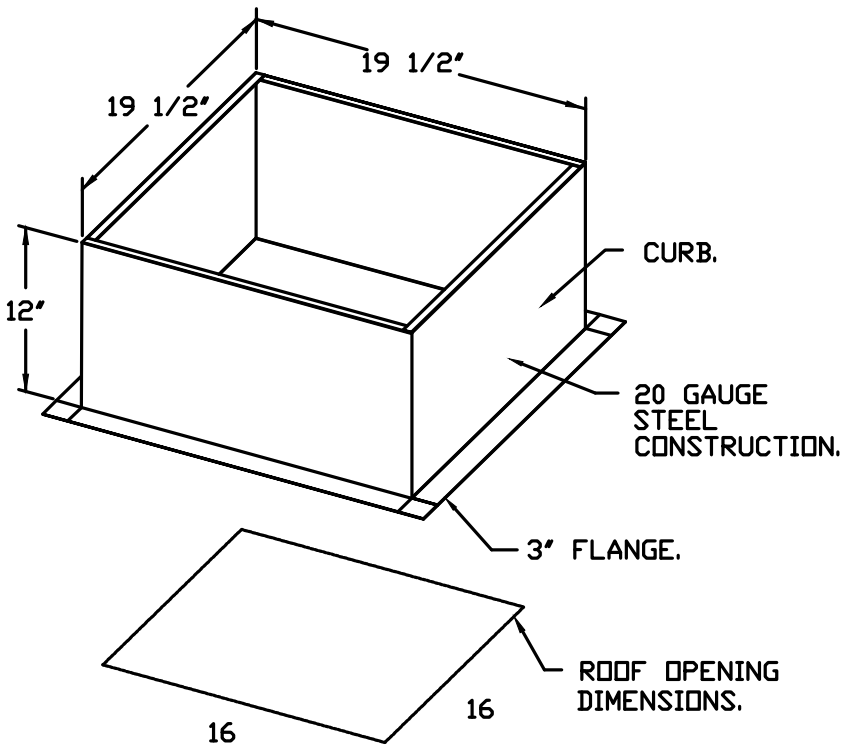
- GREASE BOX.
- UPBLAST FAN WHEEL ACCESS PORT.



PITCHED CURBS ARE AVAILABLE FOR PITCHED ROOFS.

0°
12°

SPECIFY PITCH:
EXAMPLE: 7/12 PITCH = 30° SLOPE.

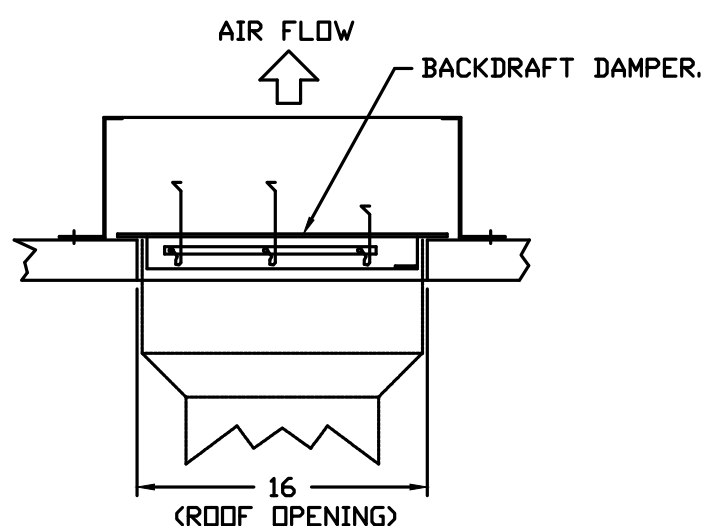


PITCHED CURBS ARE AVAILABLE FOR PITCHED ROOFS.

0°
12°

SPECIFY PITCH:
EXAMPLE: 7/12 PITCH = 30° SLOPE.

BACKDRAFT DAMPER INSTALLATION



REVISIONS

DESCRIPTION	DATE:
Δ	
Δ	
Δ	
Δ	

Southern California Office

DATE: 12/7/2020

DWG.#: 4642694

DRAWN BY: AH-86

SCALE: 3/4" = 1'-0"

MASTER DRAWING

SHEET NO. 3



PANDA RESTAURANT GROUP INC.
1683 Walnut Grove Ave.
Rosemead, California 91770
Telephone: 626.799.9898
Facsimile: 626.372.8288

All ideas, designs, arrangement and plans indicated or represented by this drawing are the property of Panda Express Inc. and were created for use on this specific project. None of these ideas, designs, arrangements or plans may be used by or disclosed to any person, firm, or corporation without the written permission of Panda Express Inc.

REVISIONS:

ISSUE DATE:

- | | | |
|---|------------|------------------|
| 1 | 01.15.2021 | ISSUE FOR PERMIT |
| 2 | 05.11.2021 | ISSUE FOR BID |

DRAWN BY:

PANDA PROJECT #: - S4-21-D7792
C&P PROJECT #: - 2190853



05.11.2021

PANDA EXPRESS
TRUE WARM AND WELCOME 2300
500 ASHFORD PARKWAY
DUNWOODY, GEORGIA 30338

M-402

HOOD DETAIL PLAN

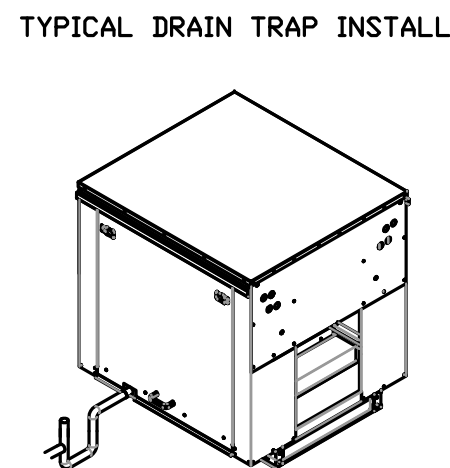
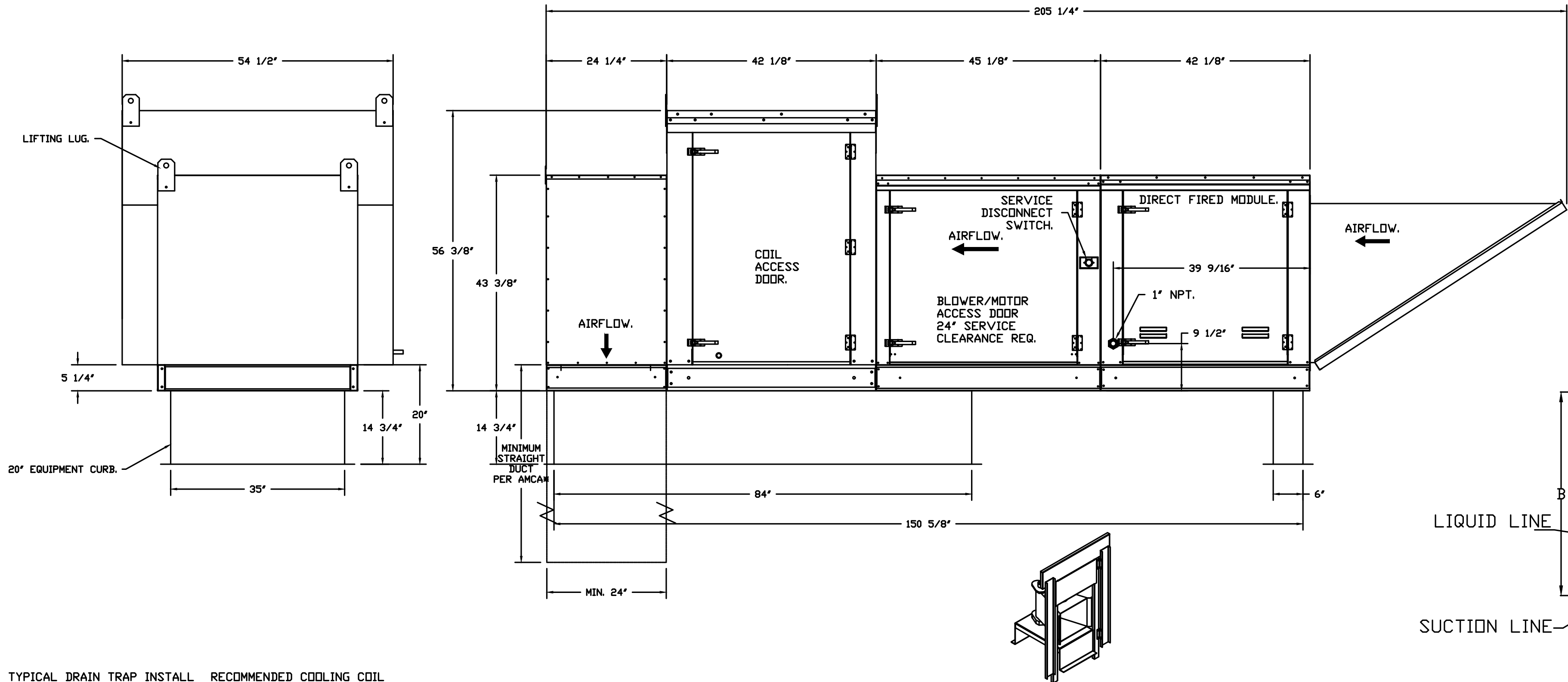
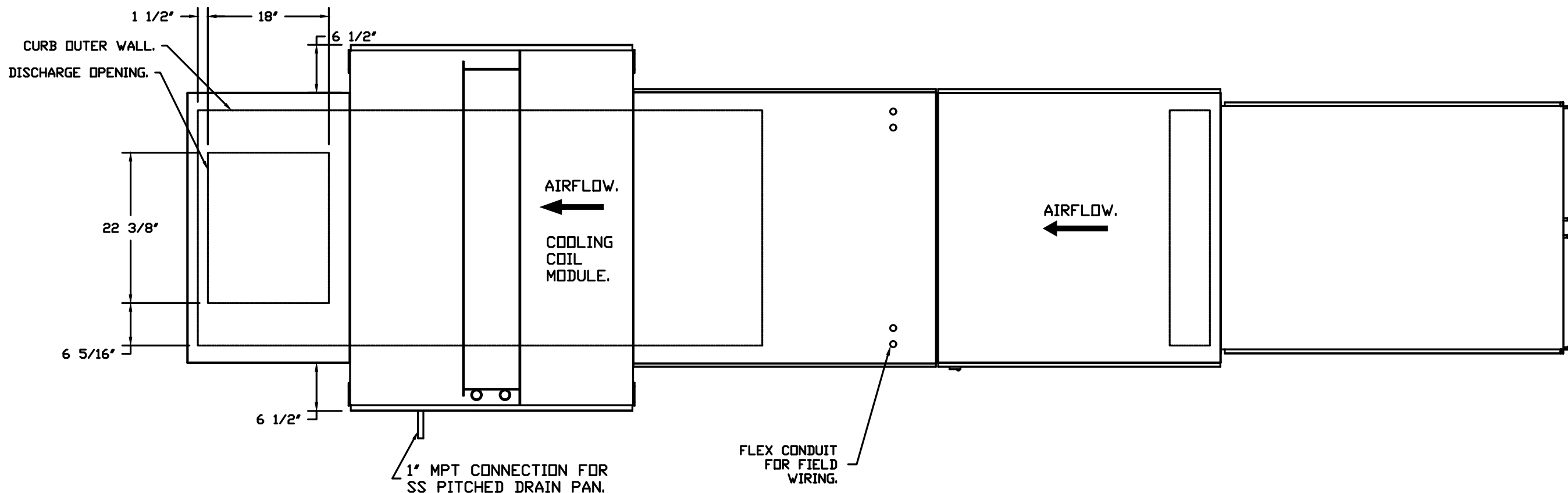
TRUE WARM & WELCOME 2300 R4

FAN #4 EA3-D500-GIB-MPU - HEATER
1. DIRECT GAS FIRED HEATED MAKE UP AIR UNIT WITH 18" BLOWER AND 12" BURNER.
2. INTAKE HOOD WITH EZ FILTERS.
3. DOWN DISCHARGE - AIR FLOW RIGHT -> LEFT.
4. COOLING INTERLOCK RELAY, 24VAC COIL, 120V CONTACTS. LOCKS OUT BURNER CIRCUIT WHEN AC IS ENERGIZED.
5. LOW FIRE START. ALLOWS THE BURNER CIRCUIT TO ENERGIZE WHEN THE MODULATION CONTROL IS IN A LOW FIRE POSITION.
6. GAS PRESSURE GAUGE, 0-35", 2.5" DIAMETER, 1/4" THREAD SIZE.
7. GAS PRESSURE GAUGE, -5 TO +15 INCHES WC, 2.5" DIAMETER, 1/4" THREAD SIZE.
8. MOTORIZED BACK DRAFT DAMPER 30" X 30" FOR SIZE 3 STANDARD & MODULAR HEATER UNITS V/EXTENDED SHAFT, STANDARD GALVANIZED CONSTRUCTION, 3/4" REAR FLANGE, LOW LEAKAGE, NBRUP-S ACTUATOR INCLUDED.
9. DX COOLING INTAKE AIR THERMOSTAT AND RELAYS MOUNTED IN UNIT - SET POINT FOR THERMOSTAT SHOULD BE 85°F.
10. DOWNTURN PLENUM FOR SIZE 3 COOLING COIL MODULE - REQUIRED FOR DOWN DISCHARGE COOLING COIL APPLICATIONS.
11. SHIP CONDENSERS LOOSE. THE REFRIGERATION LINES WILL NEED TO BE STUBBED OUT 12 INCHES. THE SUCTION LINES NEEDS TO BE INSULATED INSIDE THE COIL MODULE. ROTARY DISCONNECT SHOULD NOT BE INSTALLED ON THE POST, BLANK POST SHOULD BE USED IN PLACE.
12. FREEZE STAT WITH 10' SENSOR. FACTORY SET AT 35°F AND 10 MINUTES.
13. 10 TON DUAL CIRCUIT (5/5) MODULAR PACKAGED COOLING OPTION FOR SIZE 3 DF/EH MODULAR PACKAGED UNIT. INCLUDES CONDENSER, DX COIL, FILTER/DRYER KIT, THERMAL EXPANSION VALVE, R410A REFRIGERANT, AND REFRIGERANT PIPING. (3,600 TO 6,000 CFM) WHEN ORDERED WITH OPPOSITE AIRFLOW CONDENSERS ACCESS AND COIL PIPING WILL REMAIN IN STANDARD POSITION. DRAIN AND SLEDS WILL MOVE TO THE OPPOSITE SIDE. ANY OTHER CHANGE WILL REQUIRE O.L. CONDENSERS REQUIRE SEPARATE 208V, 3 PHASE POWER SUPPLY UNLESS ORDERED WITH SINGLE POINT CONNECTION. COIL = 3E20602M.
14. SEPARATE 120VAC WIRING PACKAGE FOR MAKE-UP AIR UNITS. OPTION MUST BE SELECTED WHEN MOUNTING VFD IN PREVIRE PANEL OR WITH DCV PACKAGE. PROVIDES SEPARATE 120VAC INPUT TO SUPPLY FAN. THIS 120V SIGNAL MUST BE RUN BY ELECTRICIAN FROM DCV TO MUA SWITCH.

NOTE: SUPPLY DUCT MUST BE INSTALLED TO MEET SMACNA STANDARDS. A MINIMUM STRAIGHT DUCT LENGTH MUST BE MAINTAINED DOWNSTREAM OF UNIT DISCHARGE AS OUTLINED IN AMCA PUBLICATION 201. WHEN USING RECTANGULAR DUCTWORK, ELBOWS MUST BE RADIUS THROAT, RADIUS BACK WITH TURNING VANES. FLEXIBLE DUCTWORK AND SQUARE THROAT/SQUARE BACK ELBOWS SHOULD NOT BE USED. ANY TRANSITION AND/OR TURNS IN THE DUCTWORK WILL CAUSE SYSTEM EFFECT. SYSTEM EFFECT WILL DRASTICALLY INCREASE STATIC PRESSURE AND REDUCE AIRFLOW. DO NOT RELY ON UNIT TO SUPPORT DUCT IN ANY WAY. FAILURE TO PROPERLY SIZE DUCTWORK MAY CAUSE SYSTEM EFFECTS AND REDUCE PERFORMANCE OF THE EQUIPMENT. SUGGESTED STRAIGHT DUCT SIZE IS 24" X 24".

SUPPLY SIDE HEATER INFORMATION

VINER TEMPERATURE = 20°F. TEMP. RISE = 65°F.
BTUs CALCULATED OFF ACTUAL AIR DENSITY.
OUTPUT BTUs AT ALTITUDE OF 0.0 FT. = 299799.
INPUT BTUs AT ALTITUDE OF 0.0 FT. = 329869.

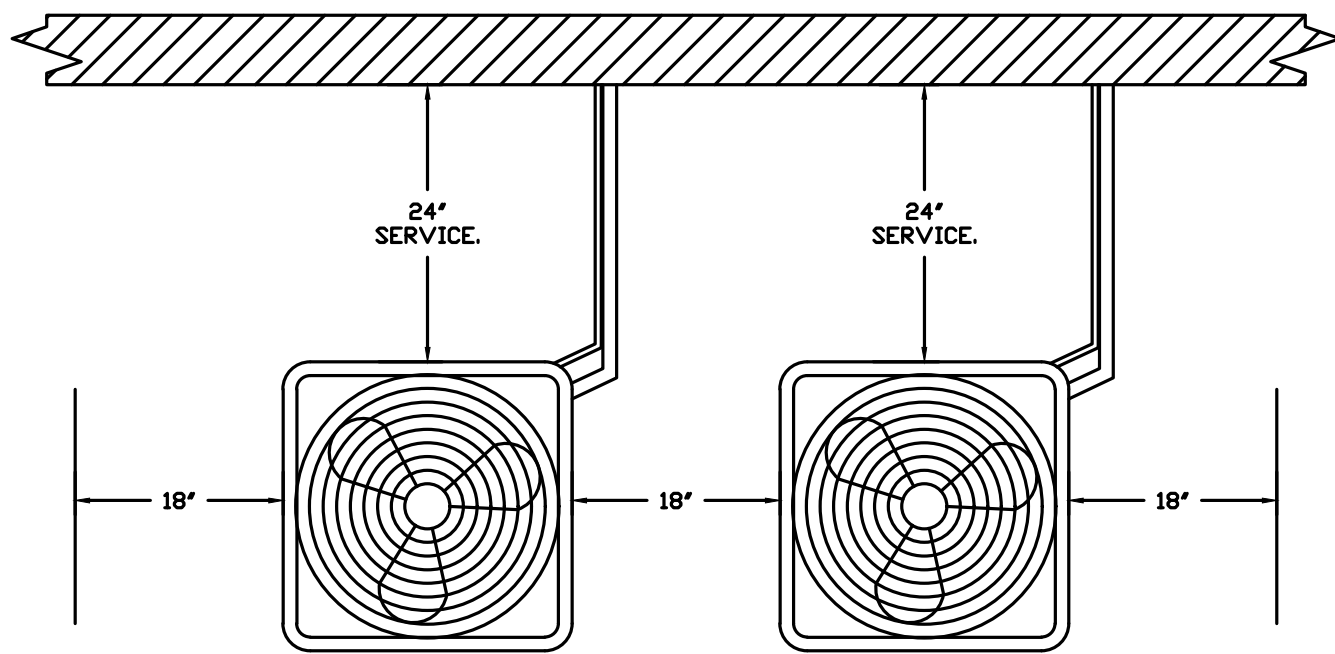
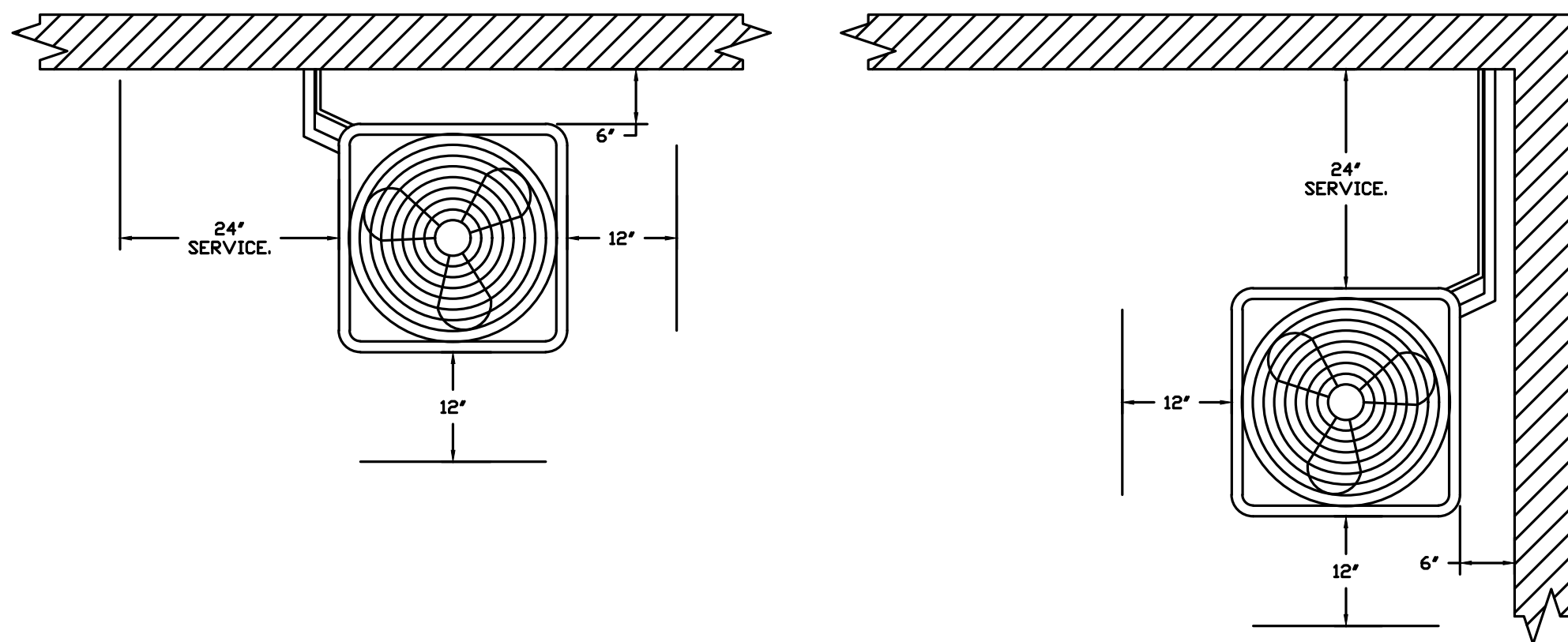


RECOMMENDED COOLING COIL DRAIN TRAP CONFIGURATION.

Refer to Plumbing Detail P-500 for AC Unit Condensate Drain

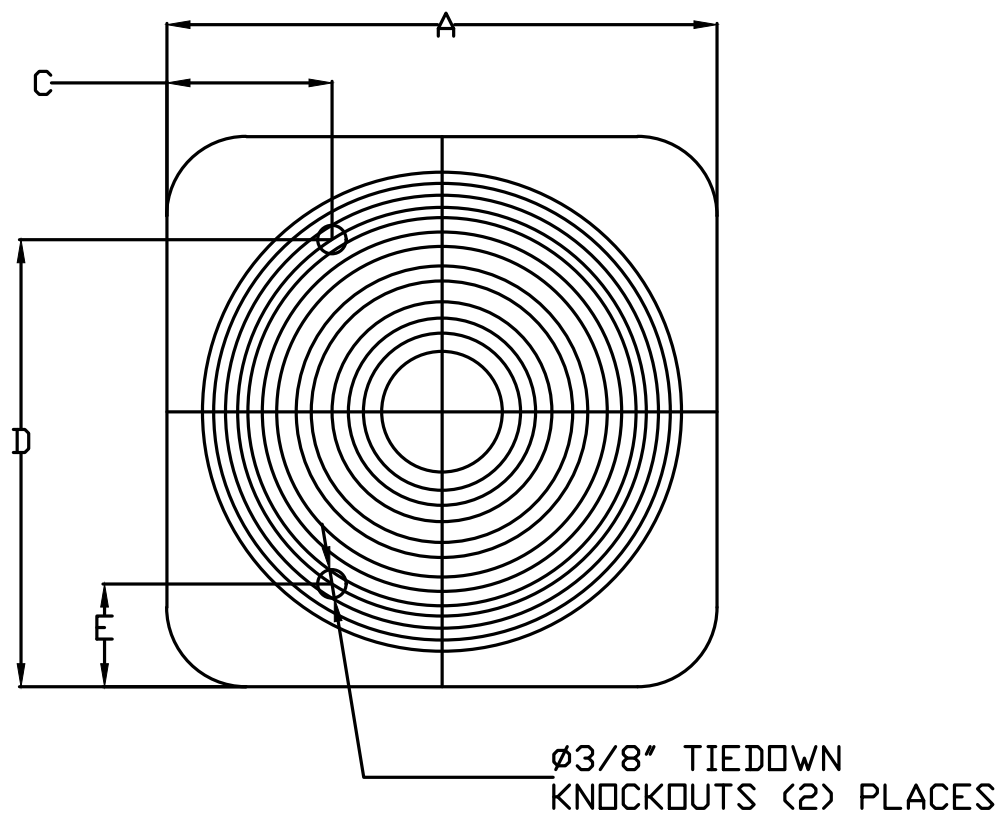
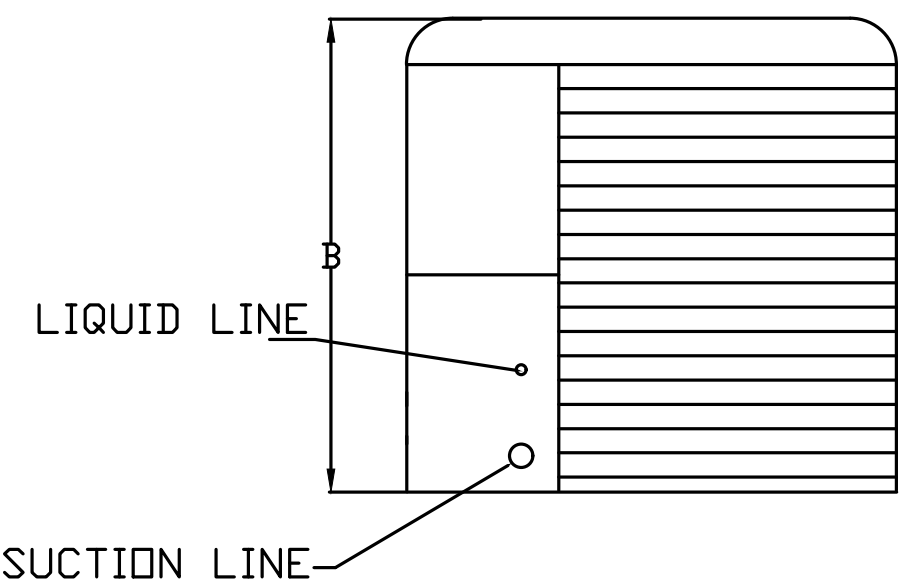
NOTES: Important: Copper above roof deck where it is exposed. PVC below roof deck
1) 1" DIAMETER PVC PIPE ONLY.
2) USE ONLY LOW PROFILE COUPLINGS.
3) ADD CLEAN OUT AS SHOWN.

DIRECT FIRED PROFILE PLATE SPECIFICATIONS:
DESCRIPTION:
DIRECT FIRED BURNERS SHALL HAVE PATENTED U.S. PATENT NO. US669292B2, SELF-ADJUSTING PROFILE PLATES DESIGNED TO ENSURE PROPER AIR VELOCITY AND PRESSURE DROP ACROSS THE BURNER. PROFILE PLATES SHALL ALLOW BURNERS TO ACHIEVE CLEAN COMBUSTION BY LIMITING BY-PRODUCT LEVELS TO A MAXIMUM OF 50PPM OF CARBON MONOXIDE CO, AND 0.5PPM OF NITROGEN DIOXIDE NO2/DIRECT FIRED UNITS SHALL BE CONFIGURED WITH THE BLOWER MOUNTED DOWNSTREAM OF THE BURNER. THIS ARRANGEMENT WILL ENSURE A CONSISTENT AIRFLOW, REGARDLESS OF INLET AIR TEMPERATURE.
APPLICATION:
SPRING-LOADED BURNER PROFILE PLATES ARE ENGINEERED TO AUTOMATICALLY REACT TO THE MOMENTUM OF A FRESH AIR STREAM, WITHOUT THE NEED FOR ANY MOTORS OR ACTUATORS TO MECHANICALLY ADJUST THEM. WITH THIS FEATURE, ALL 3P UNITS ARE DESIGNED FOR DEMAND CONTROL VENTILATION (DCV) REQUIREMENTS.
CERTIFICATIONS:
ALL PROFILE PLATE ASSEMBLIES SHALL BE INCLUDED IN THE 3P UNITS ETL LISTING AND COMPLY WITH COMBINED SAFETY STANDARDS ANSI Z83.4 AND CSA 3.7 (NON-RECIRCULATING OF HEATERS) AND ANSI Z83.18 (RECIRCULATING OF HEATERS).
GENERAL CONSTRUCTION:
-PROFILE PLATES SHALL BE FORMED FROM G90 GALVANIZED STEEL.
-PROFILE PLATES SHALL VARY IN SIZE PER UNIT.
-PROFILE PLATES SHALL BE MOUNTED ALONG THE SAME PLANE AS THE DISCHARGE OF THE BURNER.
-DESIGN SHALL INCORPORATE PROPERLY TORQUED, PERMANENTLY MOUNTED SPRING HINGES.
-SPRING HINGES SHALL BE MADE FROM PLATED STEEL.



CONDENSER CLEARANCES

48" CLEARANCE REQUIRED ABOVE CONDENSERS.
(NOTE: **CONDENSERS SHOWN HERE ARE NOT DRAWN AT SCALE).



ALL DIMENSIONS ARE NOMINAL AND GIVEN IN INCHES.

MODEL	WEIGHT	UNIT DIMENSIONS					CONNECTION SIZES		NOMINAL TONNAGE
		A	B	C	D	E	SECTION	LIQUID	
24ABB360	190 LBS	31-3/16	25-1/2	9-1/8	24-11/16	6-9/16	7/8	3/8	5

ELECTICAL INFORMATION

MODEL	V-PH	RLA	MCA	FUSE SIZE
24ABB360	208/230-3	16.0	21.4	30

REVISIONS

DESCRIPTION	DATE

Capitve

Southern California Office

3002 Dow Ave., Suite 410, Tustin, CA 92780 PHONE: (714) 957-1500 FAX: (919) 227-5975 EMAIL: reg@capitveaire.com

www.capitveaire.com

Panda Express - Dunwoody GA

Dunwoody, GA, 31146

DATE: 12/7/2020

DWG.#: 4642694

DRAWN BY: AH-86

SCALE: 3/4" = 1'-0"

MASTER DRAWING

SHEET NO. 4



PANDA RESTAURANT GROUP INC.
1683 Walnut Grove Ave.
Rosemead, California
91770
Telephone: 626.799.9898
Facsimile: 626.372.8288

All ideas, designs, arrangement and plans indicated or represented by this drawing are the property of Panda Express Inc. and were created for use on this specific project. None of these ideas, designs, arrangements or plans may be used by or disclosed to any person, firm, or corporation without the written permission of Panda Express Inc.

REVISIONS:

ISSUE DATE:

1	01.15.2021 ISSUE FOR PERMIT
2	05.11.2021 ISSUE FOR BID

DRAWN BY:

PANDA PROJECT #: - S4-21-D7792
C&P PROJECT #: - 2190853



2600 Maitland Center Pkwy. Maitland, FL 32751
P (407) 661-9100
F (407) 661-9101
www.c&p.com
Panda Express Contract #AA1208208

05.11.2021

PANDA EXPRESS

TRUE WARM AND WELCOME 2300
500 ASHFORD PARKWAY
DUNWOODY, GEORGIA 30338

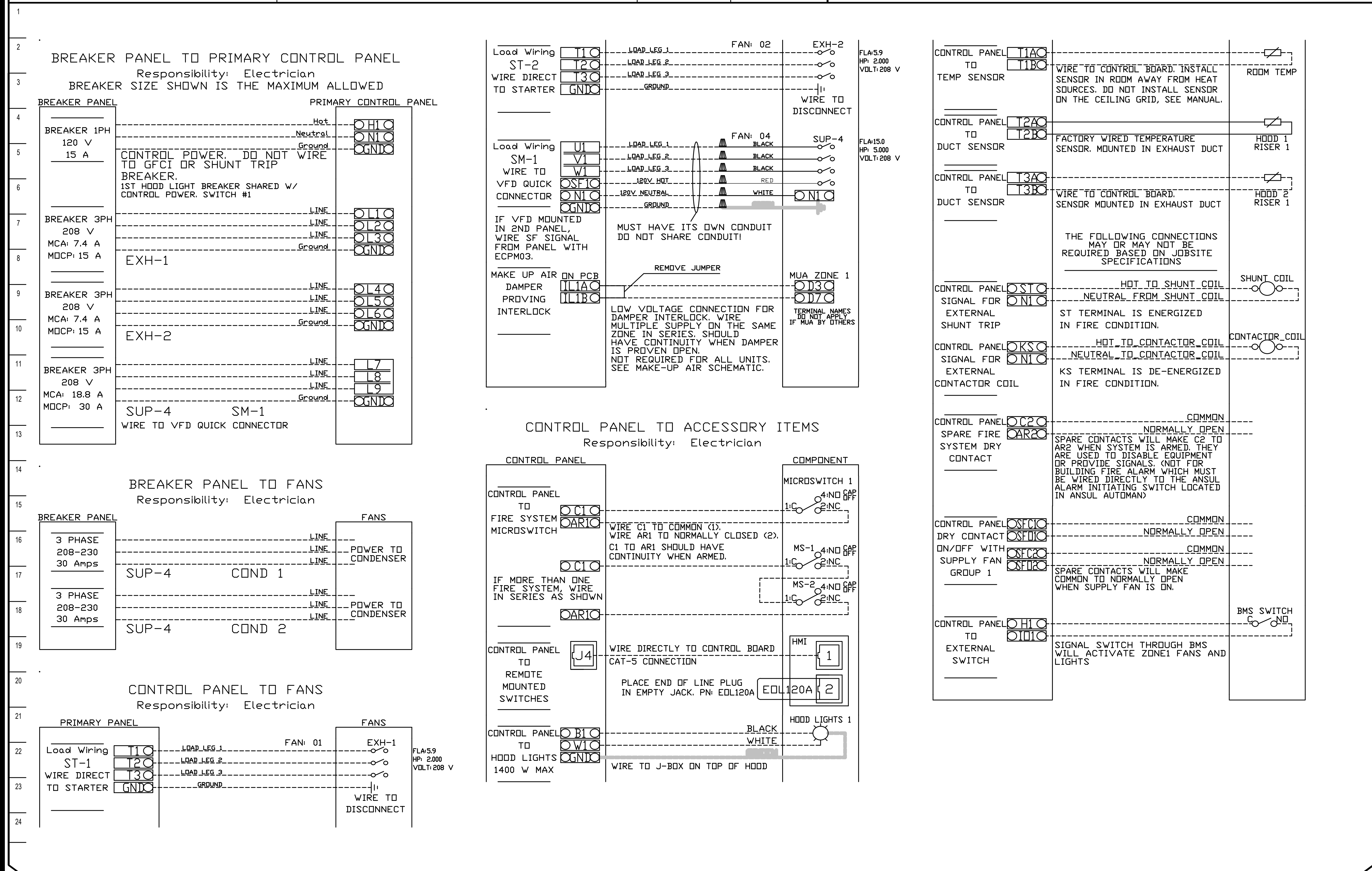
M-403

HOOD DETAIL PLAN

TRUE WARM & WELCOME 2300 R4

ELECTRICAL PACKAGE -- JOB#4642694											
NO	TAG	PACKAGE #	LOCATION	SWITCHES		OPTION	FANS CONTROLLED				
				LOCATION	QUANTITY		TYPE	HP	VOLT	FLA	
1		SC-321101MA-SEP	UTILITY CABINET LEFT	08 - SHIP LODGE V/ PREWIRE	1 LIGHT 1 FAN	SMART CONTROLS THERMOSTATIC CONTROL V/ RELAY ON/OFF WITH SUPPLY	EXHAUST	3	2,000	208	5.9
							EXHAUST	3	2,000	208	5.9
							SUPPLY	3	5,000	208	15.0

JOB NO 4642694	MODEL NUMBER SC-321110MA-SEP	DRAWN BY	SCHEMATIC TYPE INSTALL	DESCRIPTION OF OPERATION: 3 Phase w/ control for 2 Exhaust Fans, 1 Supply Fan, Exhaust on in Fire, Lights out in Fire, Fan(s) On/Off Thermostatically Controlled, Separate Breaker Input for each Fan. Room temperature sensor shipped loose for field installation. INVERTER DUTY 3 PHASE MOTOR REQUIRED FOR USE WITH VFD.
	JOB NAME Panda Express - Dunwoody GA	DATE 12/7/2020	DWG NO ECP #1-1	



REVISIONS		
	DESCRIPTION	DATE:
△		
△		
△		
△		



Panda Express - Dunwoody GA
Dunwoody, GA, 31146

DATE: 12/7/2020

DWG.#:
4642694

DRAWN BY: AH-86

SCALE:
3/4" = 1'-0"

MASTER DRAWING

SHEET NO.
5



PANDA RESTAURANT GROUP INC.
1683 Walnut Grove Ave.
Rosemead, California
91770
Telephone: 626.799.9898
Facsimile: 626.372.8288

All ideas, designs, arrangement and plans indicated or represented by this drawing are the property of Panda Express Inc. and were created for use on this specific project. None of these ideas, designs, arrangements or plans may be used by or disclosed to any person, firm, or corporation without the written permission of Panda Express Inc.

REVISIONS:

ISSUE DATE:

1	01.15.2021 ISSUE FOR PERMIT
2	05.11.2021 ISSUE FOR BID

DRAWN BY:

PANDA PROJECT #: - S4-21-D7792
C&P PROJECT #: - 2190853



05.11.2021

PANDA EXPRESS
TRUE WARM AND WELCOME 2300
500 ASHFORD PARKWAY
DUNWOODY, GEORGIA 30338

M-404

HOOD DETAIL PLAN

TRUE WARM & WELCOME 2300 R4

