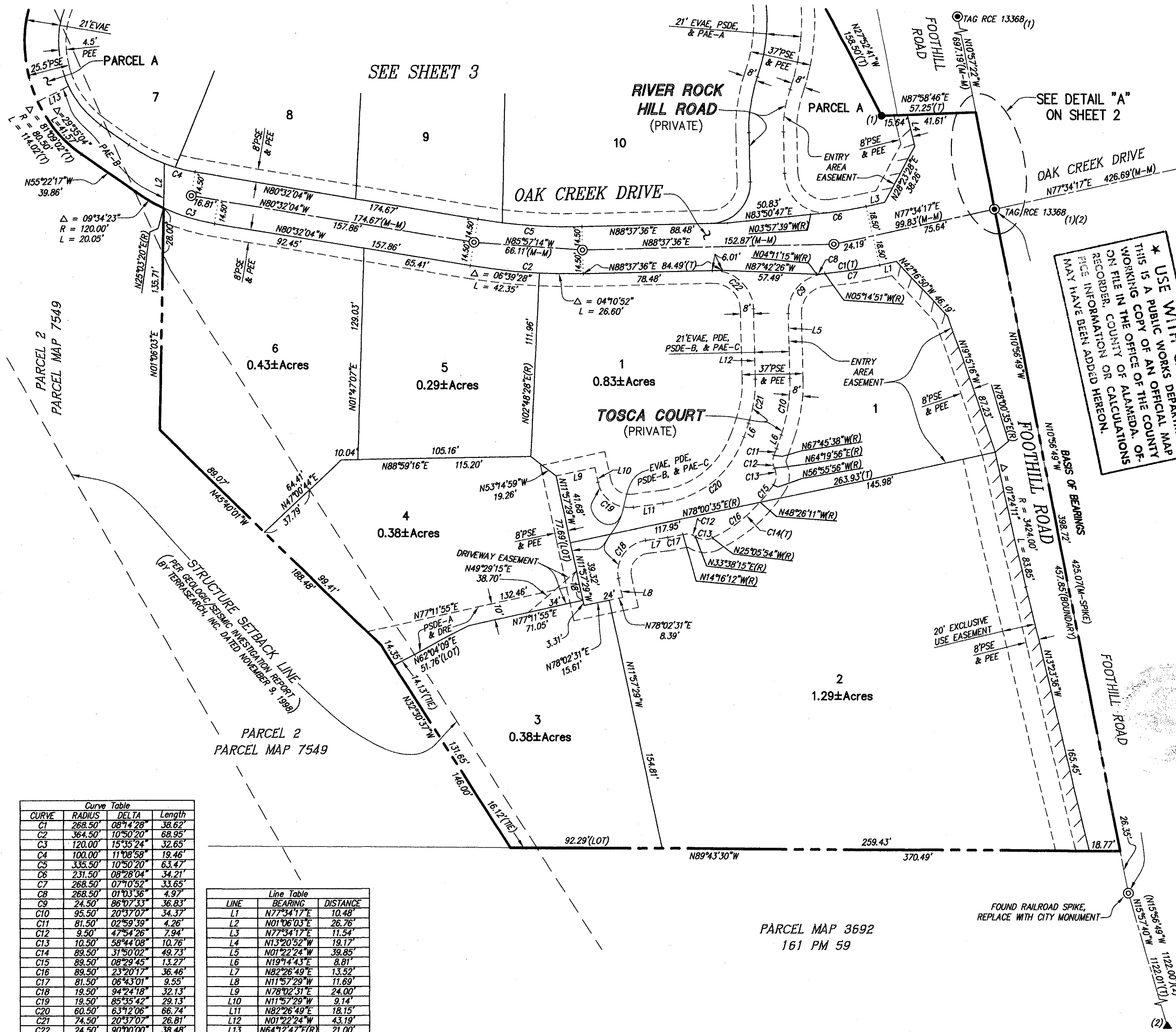


G:\J091998\981106\MAPPING\FINAL MAP\Fms476.dwg 07/24/03 03:02:53 PM PDT



Curve Table			
CURVE	RADIUS	DELTA	Length
C1	268.50'	08°44'28"	38.62'
C2	364.50'	10°50'20"	68.95'
C3	120.00'	15°35'24"	32.65'
C4	100.00'	11°08'58"	19.46'
C5	333.50'	10°50'20"	63.47'
C6	231.50'	08°28'04"	34.21'
C7	268.50'	07°10'52"	33.65'
C8	268.50'	01°03'36"	4.97'
C9	24.50'	86°07'33"	36.83'
C10	95.50'	20°37'07"	34.37'
C11	81.50'	02°59'39"	4.26'
C12	9.50'	47°54'26"	7.94'
C13	10.50'	58°44'08"	10.76'
C14	89.50'	31°50'02"	49.73'
C15	89.50'	08°29'45"	13.27'
C16	89.50'	23°20'17"	36.46'
C17	81.50'	06°43'01"	9.55'
C18	19.50'	94°24'18"	32.13'
C19	19.50'	85°35'42"	29.13'
C20	60.50'	63°12'06"	66.74'
C21	74.50'	20°37'07"	26.81'
C22	24.50'	90°00'00"	38.48'

Line Table		
LINE	BEARING	DISTANCE
L1	N77°34'17"E	10.48'
L2	N01°06'03"E	26.76'
L3	N77°34'17"E	11.54'
L4	N13°20'52"W	19.17'
L5	N01°22'24"W	39.85'
L6	N19°14'43"E	8.81'
L7	N82°26'49"E	13.52'
L8	N11°57'29"W	11.69'
L9	N78°02'31"E	24.00'
L10	N11°57'29"W	9.14'
L11	N82°26'49"E	18.15'
L12	N01°22'24"W	43.19'
L13	N64°12'47"E(R)	21.00'

NOTES:

1. ALL MONUMENT TIE LINES ARE AT RIGHT ANGLES TO THE MONUMENT LINE UNLESS OTHERWISE NOTED.

BASIS OF BEARINGS

THE BEARING N10°56'49"W OF THE MONUMENT LINE BETWEEN FOUND MONUMENT AND FOUND RAILROAD SPIKE IN FOOTHILL ROAD, AS SHOWN ON PARCEL MAP 3692, FILED IN BOOK 161 OF PARCEL MAPS AT PAGE 58, OFFICIAL RECORDS OF ALAMEDA COUNTY.

LEGEND

- TRACT BOUNDARY
- LOT LINE
- EXISTING LOT LINE
- MONUMENT LINE / CENTERLINE
- NEW EASEMENT LINE AS NOTED
- EXISTING EASEMENT LINE
- MONUMENT TIE LINE
- RELINQUISHMENT OF ABUTTERS RIGHTS AND PRIVATE ACCESS PROHIBITED
- SET CITY OF PLEASANTON STANDARD MONUMENT STAMPED RCE 25281
- FOUND CITY OF PLEASANTON STANDARD MONUMENT STAMPED AS NOTED
- FOUND 3/4" IRON PIPE PER REFERENCE AS NOTED
- FOUND RAILROAD SPIKE PER REFERENCE AS NOTED
- PSE PUBLIC SERVICE EASEMENT
- EVAE EMERGENCY VEHICLE ACCESS EASEMENT
- PDE PRIVATE DRIVEWAY EASEMENT
- PAE-A PRIVATE ACCESS EASEMENT - A
- PAE-B PRIVATE ACCESS EASEMENT - B
- PAE-C PRIVATE ACCESS EASEMENT - C
- LME LANDSCAPE MAINTENANCE EASEMENT
- PSDE PRIVATE STORM DRAIN EASEMENT
- (M-M) MONUMENT TO MONUMENT
- (R) RADIAL
- (T) TOTAL
- DRE DRAINAGE RELEASE EASEMENT
- PSDE-A PRIVATE STORM DRAIN EASEMENT - A
- PSDE-B PRIVATE STORM DRAIN EASEMENT - B
- PEE PRIVATE ELECTROLIER EASEMENT

TRACT 7176
LEMOINE RANCH ESTATES

A SUBDIVISION OF PARCEL 1 AS SHOWN ON PARCEL MAP 7549
FILED IN BOOK 249 OF PARCEL MAPS AT PAGES 59-60
ALAMEDA COUNTY RECORDS

CITY OF PLEASANTON
ALAMEDA COUNTY, CALIFORNIA

RUGGERI-JENSEN-AZAR & ASSOCIATES
CIVIL ENGINEERS, PLANNERS, SURVEYORS
PLEASANTON, CALIFORNIA
JULY 2003