

- MINIMUM CONDUCTOR SIZE THIS SHEET TO BE #10 CU, 3/4" CONDUIT.
- EXISTING POLES / POLE-MOUNTED LIGHTING TO BE REUSED. REPLACE BULBS AND CLEAN HEADS. EXISTING CIRCUITS (INDICATED ON PLANS) TO BE REUSED AND REROUTED THROUGH NEW TIME CLOCK CONTROL (REF. "TIME CLOCKS" / SHEET E-400).

SITE PLAN GENERAL NOTES

2

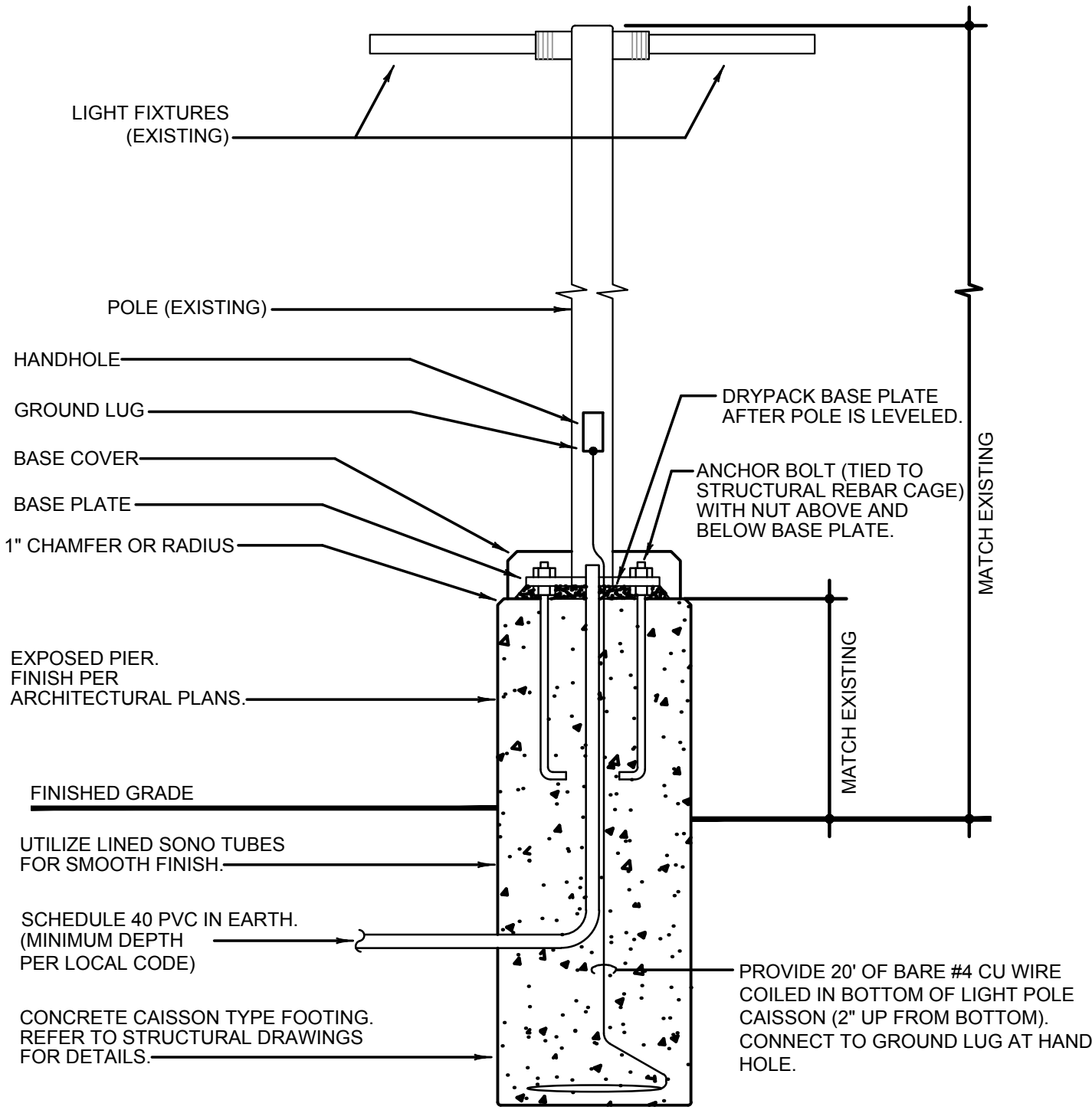
E-105

- FEED THROUGH LIGHTING CONTACTOR. REF: 11/E-400.
- STUB UP LOCATION FOR (3) 3/4" CONDUITS & PULL STRINGS, TO ENTER BUILDING & UP TO 6" ABOVE CEILING. REFER TO SHEET 11/E-401.
- STUB-UP LOCATION FOR MENU BOARD. SIGN DISCONNECT PROVIDED BY SIGN CONTRACTOR. COORDINATE PRECISE LOCATION WITH ARCHITECT / OWNER.
- DRIVE-THRU SENSOR LOOP. COORDINATE LOCATION. REFER TO DETAIL 1 / E-401.
- STUB-UP FOR DRIVE-THRU ORDER CONFIRMATION MONITOR. COORDINATE LOCATION WITH ARCHITECT / OWNER.
- CONNECT TMB TO EXISTING TELEPHONE/DATA SERVICE DEMARCATION FOR BUILDING. COORDINATE SERVICE WITH UTILITY COMPANY.
- RELOCATE EXISTING LIGHT POLE AS SHOWN TO ACCOMMODATE NEW DUMPSTER ENCLOSURE. REROUTE EXISTING UNDERGROUND CONDUIT/WIRING TO NEW POLE LOCATION. PROVIDE NEW POLE FOUNDATION PER DETAIL 4 / THIS SHEET.

SITE PLAN KEYED NOTES

3

E-105



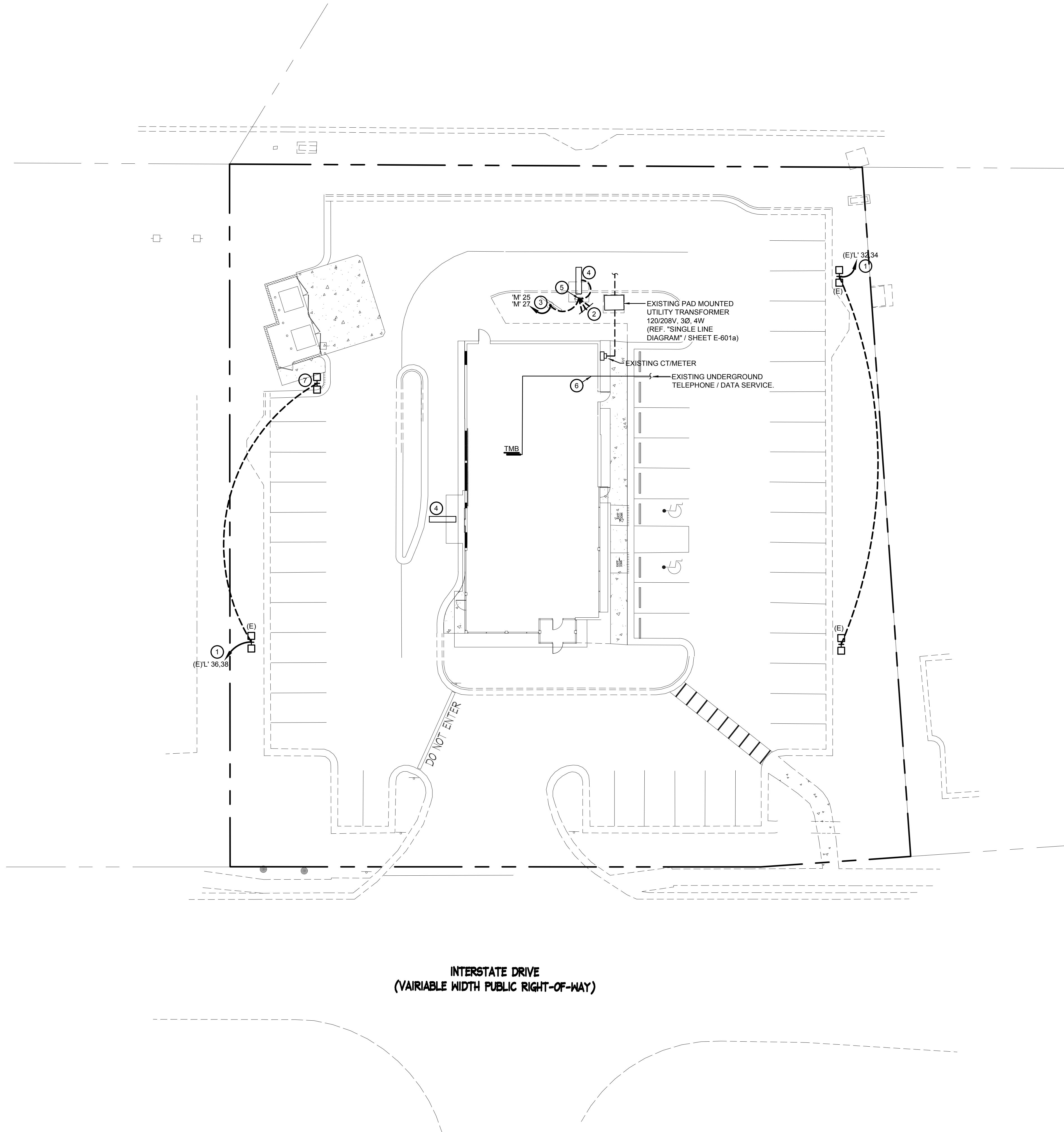
NOTE: THIS DETAIL IS FOR ELECTRICAL INSTALLATION ONLY. REFER TO STRUCTURAL DRAWINGS FOR MORE INFORMATION.

POLE FOUNDATION DETAIL

4

NO SCALE

E-106



SITE & EXTERIOR LIGHTING PLAN

1

1" = 16'-0"

E-105



PANDA EXPRESS, INC.
1683 Walnut Grove Ave.
Rosemead, California
91770

Telephone: 626.799.9898
Facsimile: 626.372.8288

All ideas, designs, arrangement and plans indicated or represented by this drawing are the property of Panda Express Inc. and were created for use on this specific project. None of these ideas, designs, arrangements or plans may be used by or disclosed to any person, firm, or corporation without the written permission of Panda Express Inc.

REVISIONS:

NO.	REVISION	DATE

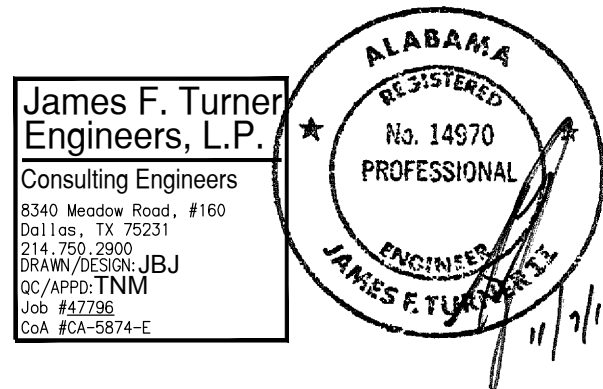
ISSUE DATE:

1st	DEVELOPER REVIEW	07.15.19
2nd	SITE PLAN SUBMITTAL	08.26.19
3rd	SITE COMMENTS	09.05.19
4th	ISSUE FOR PERMIT	10.01.19
5th	ISSUE FOR BID	11.07.19

DRAWN BY: PM / KL / EA

PANDA PROJECT #: S8-20-D7163

ARCH PROJECT #: 19027



Heights Venture
ARCHITECTURE + DESIGN

HOUSTON 1111 North Loop West, Suite 800 Houston, Texas 77008 713.866.1103 V
DALLAS 5741 Legacy Drive, Suite 320 Plano, Texas 75024 972.450.7262 V

PANDA EXPRESS

2096 INTERSTATE DR.
OPELIKA, AL, 36801
3600 FSDT

TWW REMODEL

E-105

SITE & EXTERIOR LIGHTING PLAN

TRUE WARM & WELCOME

BID ISSUE