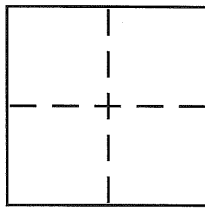


BK 25 Pg. 61
CR 2901

CORNER RECORD

City of BERKELEY Document Number CR 2901
County of ALAMEDA, California
Brief Legal Description CITY MONUMENT (375x503) REFERENCE



CORNER TYPE
Government Corner ☐ Control ☐
Meander ☐ Property ☐
Rancho ☐ Other ☒
Date of Survey 11-27-06

COORDINATES (Optional)
N. _____
E. _____
Zone _____ NAD27 ☐ NAD83 ☐
NAD83 Epoch _____
Elev. _____
Vert. Datum: NGVD29 ☐ NAVD88 ☐
Meas. Units: Metric ☐ Imperial ☐

Corner - Left as found ☐ Found and tagged ☐ Established ☐ Reestablished ☐ Rebuilt ☐

Identification and type of corner found: Evidence used to identify or procedure used to establish or reestablish the corner:
SEE PAGE 2

A description of the physical condition of the monument as found and as set or reset:
SEE PAGE 2

SURVEYOR'S STATEMENT

This Corner Record was prepared by me or under my direction in conformance with
the Land Surveyor's Act on November 27, 2006
Signed [Signature] P.L.S or R.C.E. No. LS 5003

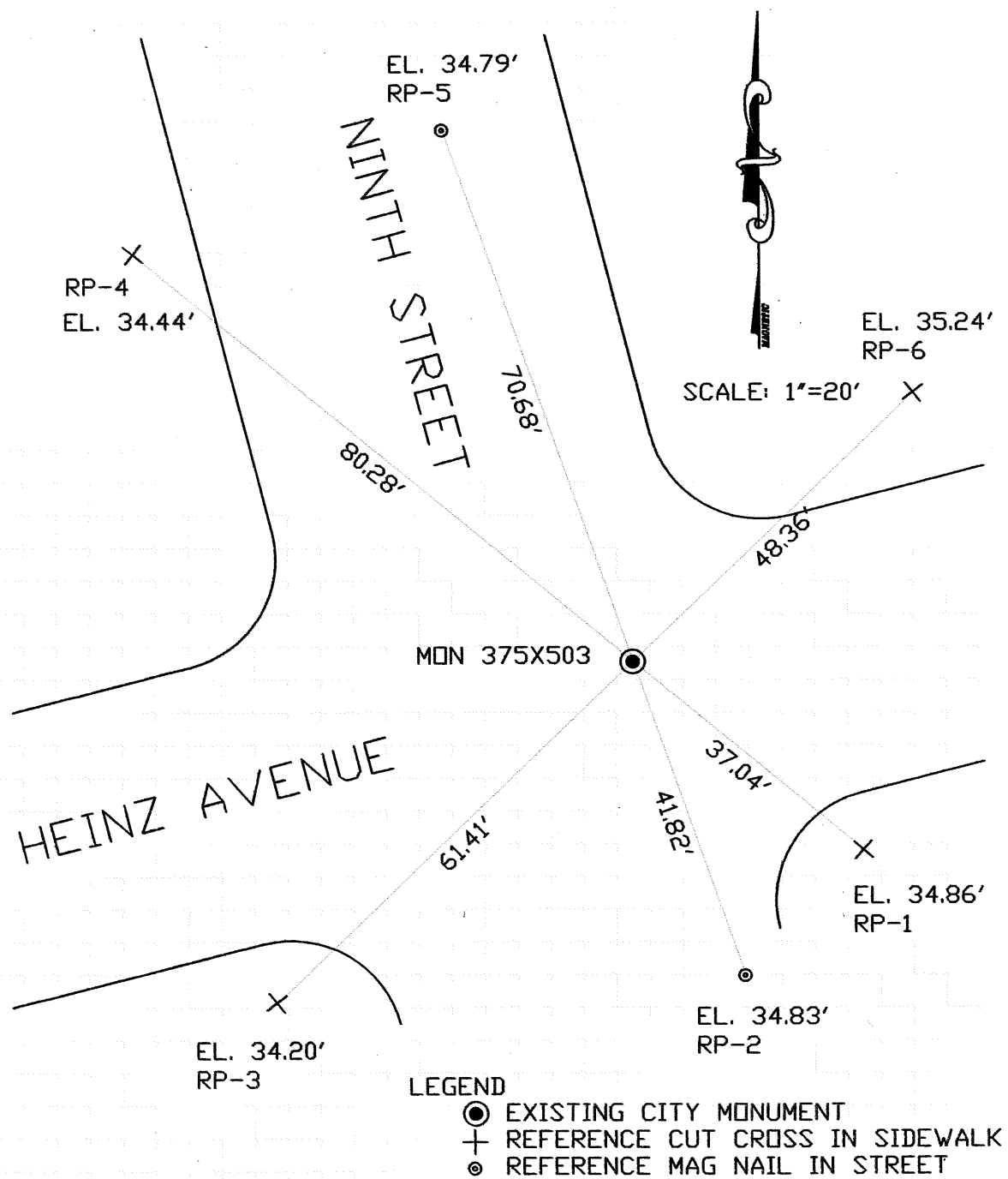


COUNTY SURVEYOR'S STATEMENT

This Corner Record was received 1-17-07
and examined and filed 1-31-07
Signed [Signature] P.L.S or R.C.E. No. 5726
Title COUNTY SURVEYOR



County Surveyor's Comment _____



THE EXISTING MONUMENT AS SHOWN IS REFERENCED BY THE INTERSECTION OF STRAIGHT LINES BETWEEN RP-1 TO RP-4, RP-2 TO RP-5 AND RP-3 TO RP-6.