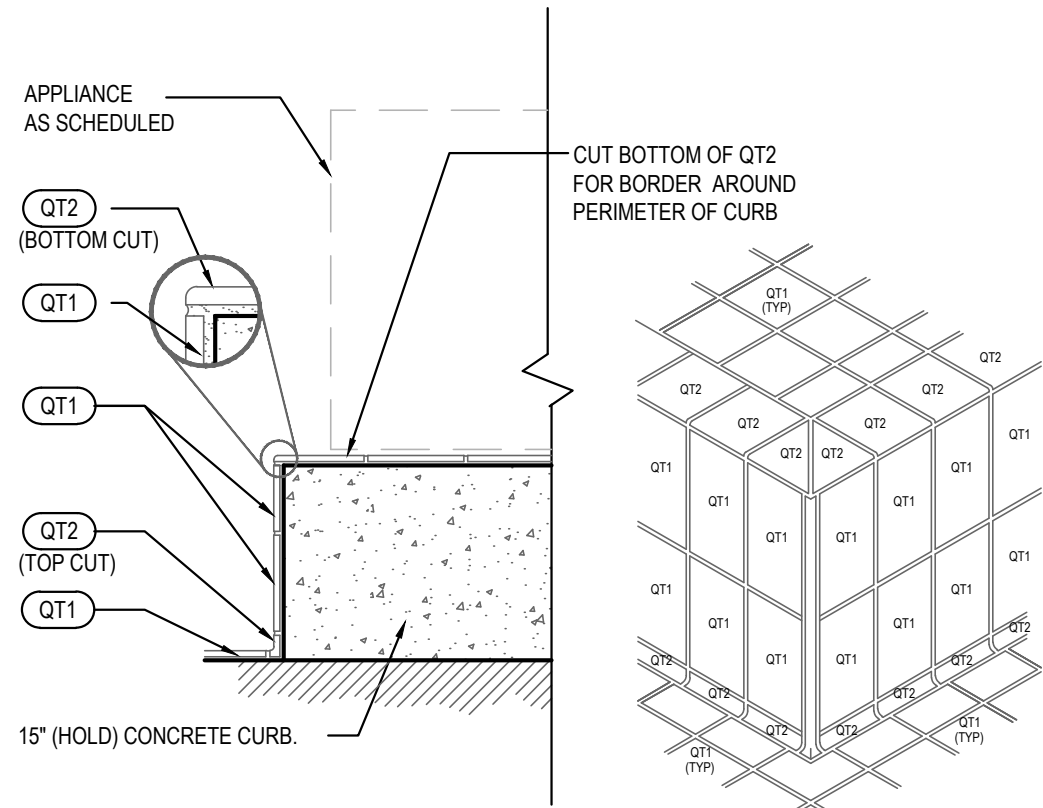
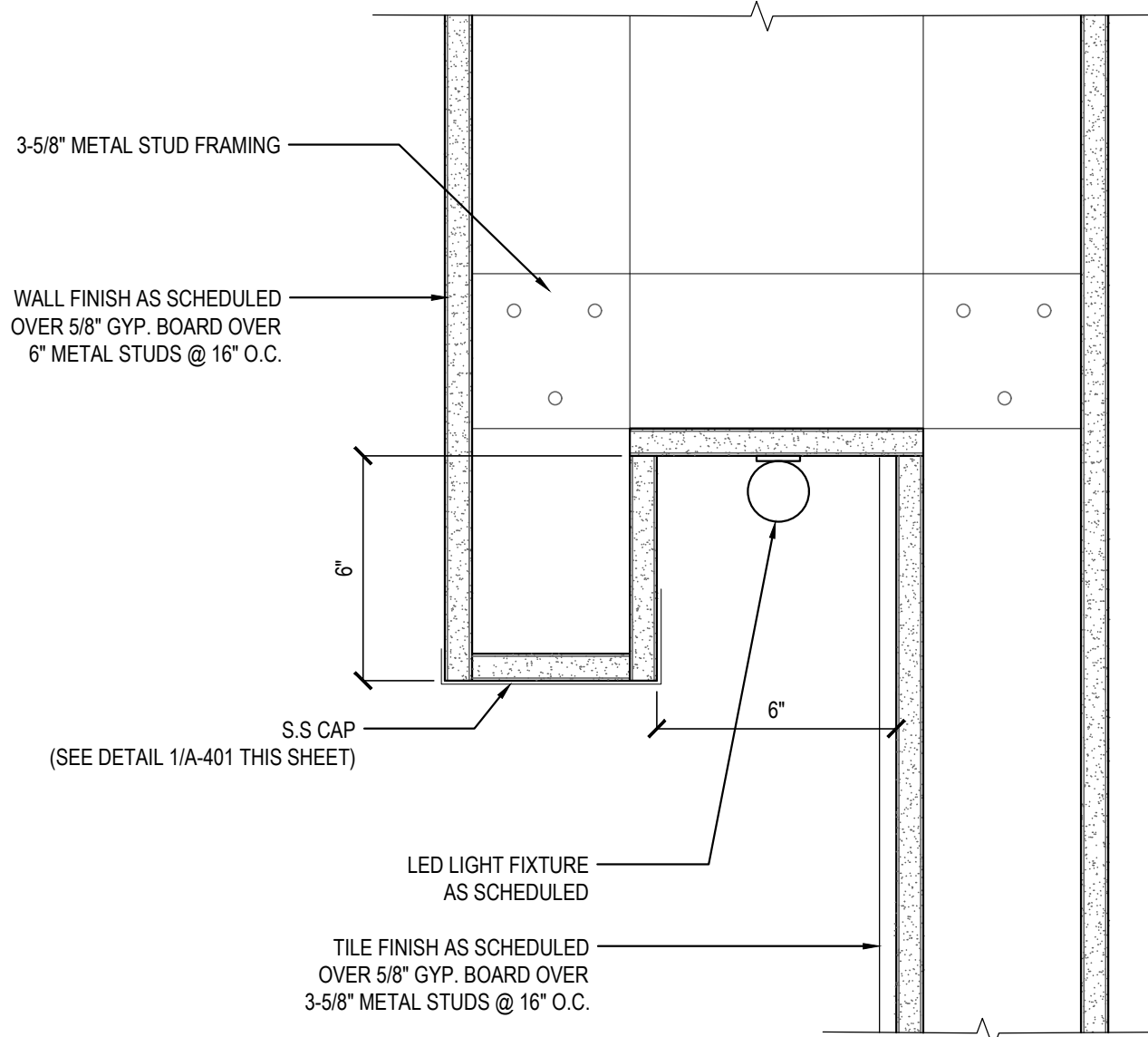


NOT USED 9  
A-402

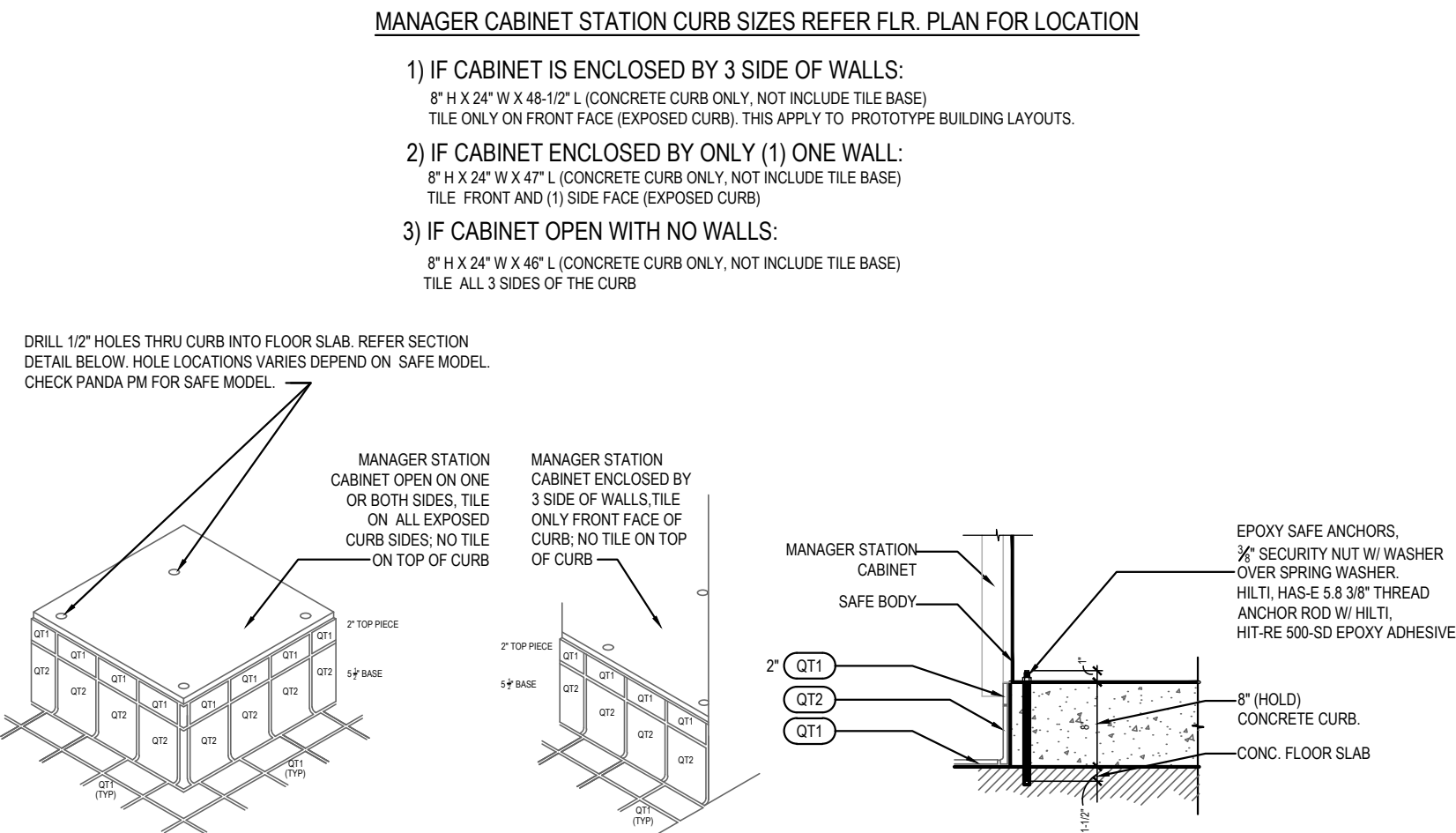
SECTION AT LCD MONITOR 6  
NOT TO SCALE A-402



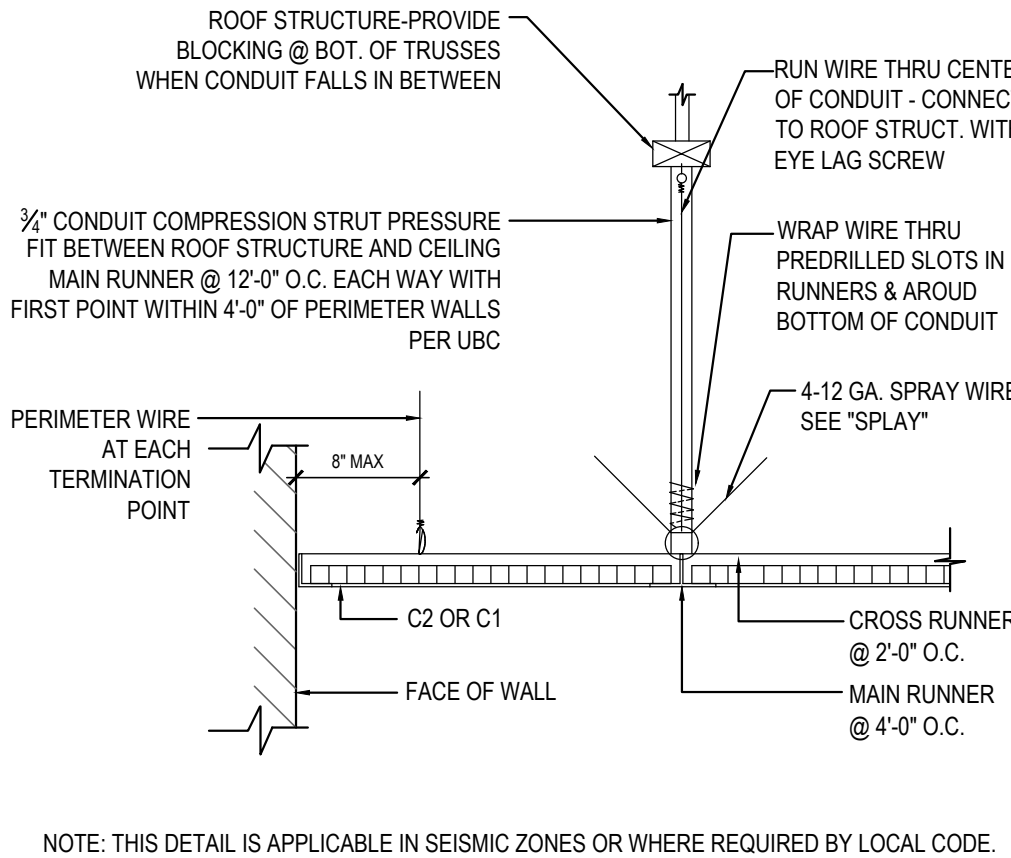
TYPICAL CURB DETAIL 8  
NOT TO SCALE A-402



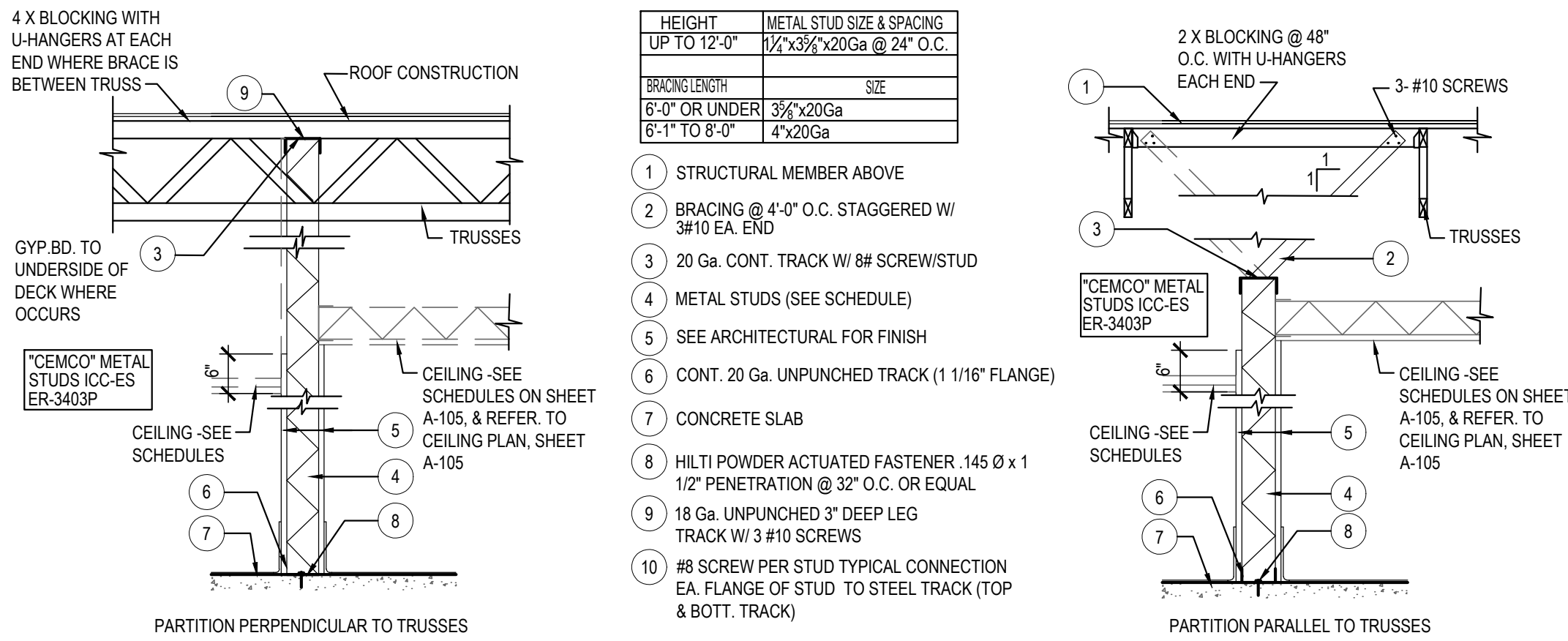
LED COVE LIGHT DETAIL 5  
NOT TO SCALE A-402



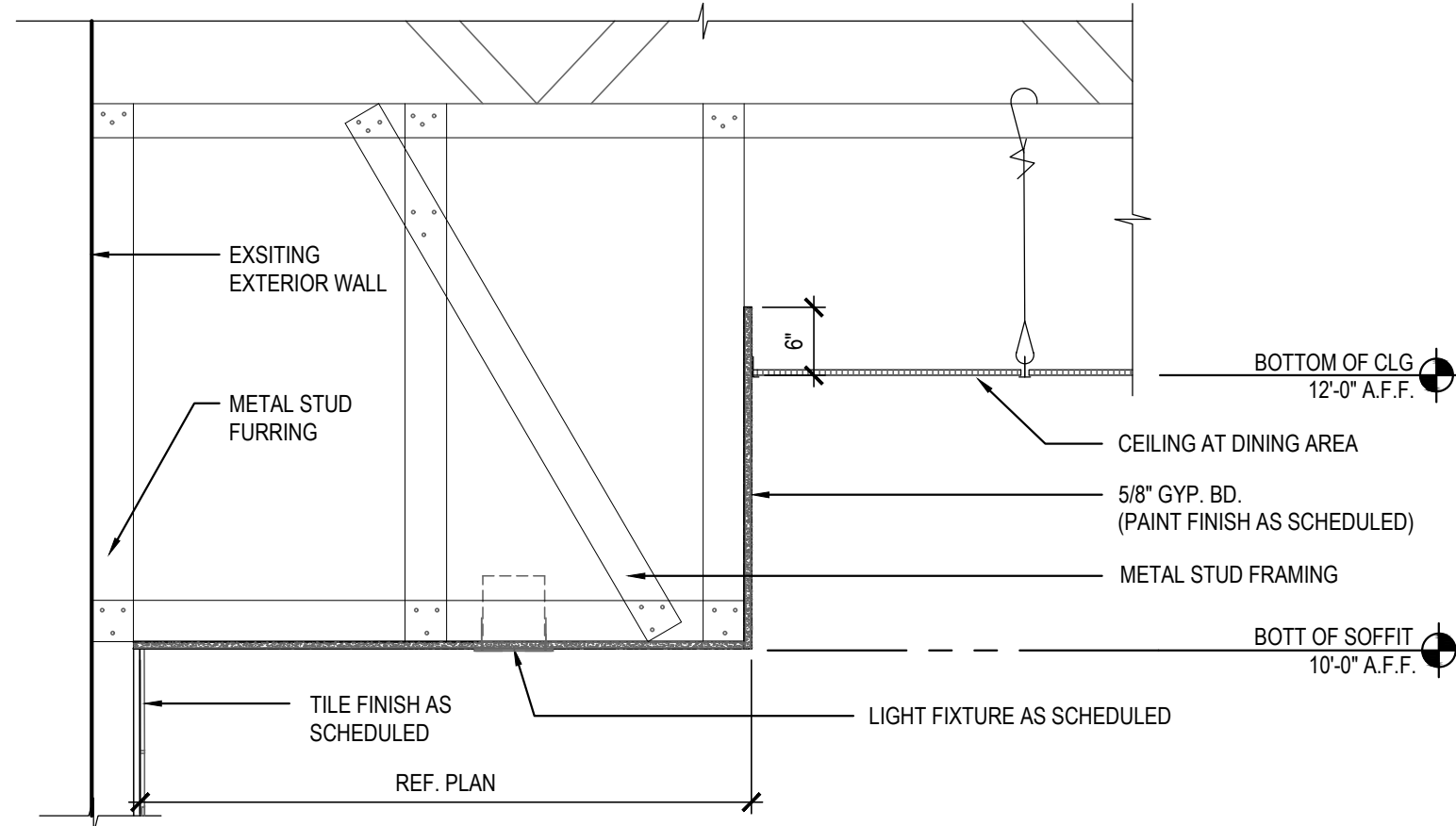
MAMANGER STATION CURB DETAIL 7  
NOT TO SCALE A-402



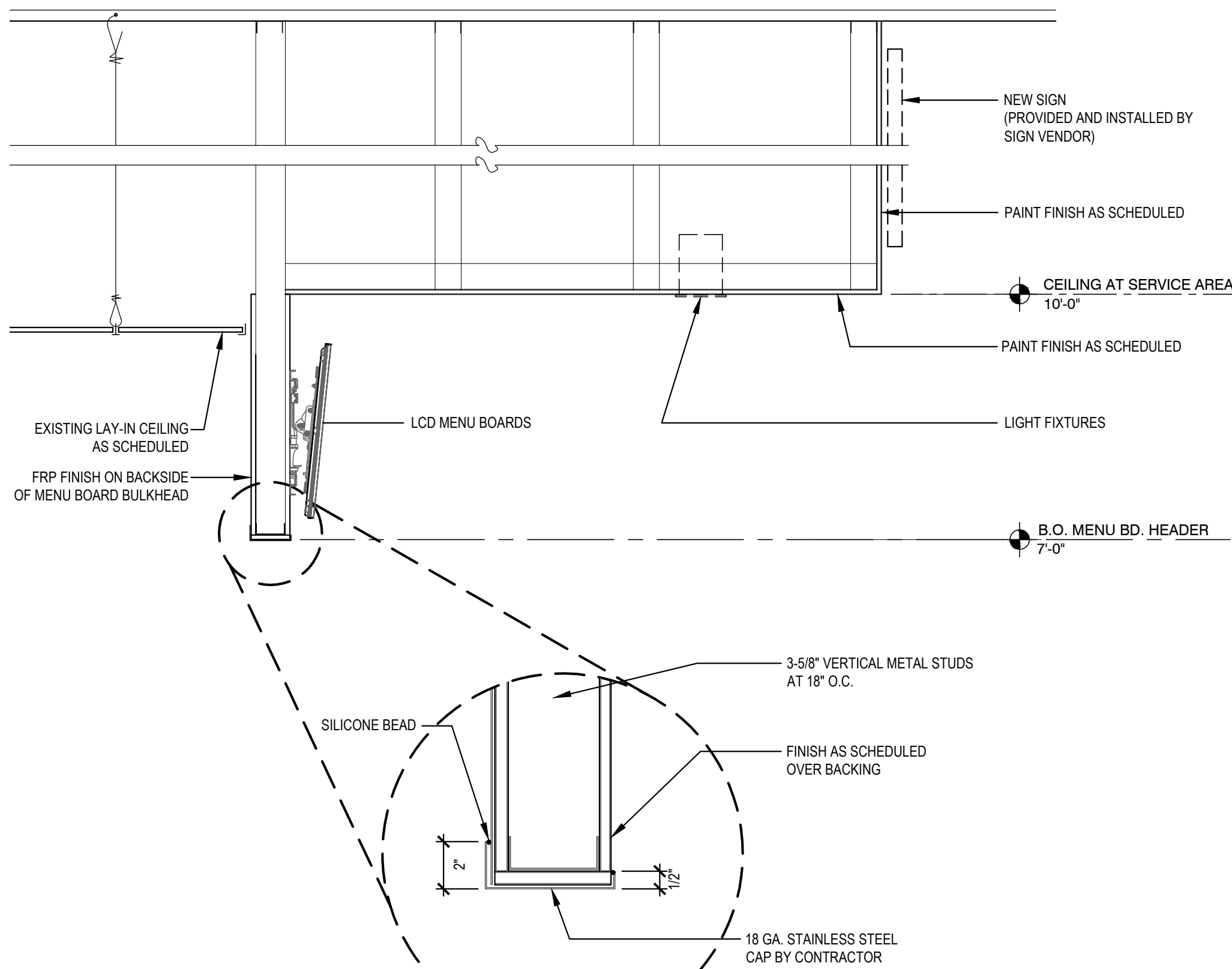
CEILING DETAIL 4  
NOT TO SCALE A-402



WALL PATTITION DETAILS 3  
NOT TO SCALE A-402



SOFFIT SECTION AT DRINK STATION 2  
NOT TO SCALE A-402



CEILING SECTION AT SERVICE AREA 1  
NOT TO SCALE A-402



PANDA RESTAURANT GROUP INC.  
1683 Walnut Grove Ave.  
Rosemead, California  
91770  
Telephone: 626.799.9898  
Facsimile: 626.372.8288

All ideas, designs, arrangement and plans indicated or represented by this drawing are the property of Panda Express Inc. and were created for use on this specific project. None of these ideas, designs, arrangements or plans may be used by or disclosed to any person, firm, or corporation without the written permission of Panda Express Inc.

REVISIONS:  
ARCHITECTURAL DETAILS 07/30/2017

ISSUE DATE:  
1 35% SUBMITTAL 12/21/2016  
2 100% SUBMITTAL 05/01/2017  
3 BID SET 07/03/2017  
4 CONSTRUCTION SET 07/30/2017

CHECKED BY: CF  
DRAWN BY: STAFF

PANDA PROJECT #: B1-17-D5167  
ARCH PROJECT #:



711 N. FIELDER RD.  
ARLINGTON, TX 76012  
PH: (817) 635-5696  
FAX: (817) 635-5699

I CERTIFY THAT THESE DOCUMENTS WERE PREPARED OR APPROVED BY ME, AND THAT I AM DULY LICENSED ARCHITECT UNDER THE LAWS OF THE STATE OF MARYLAND  
LICENSE NO: 10225  
EXPIRATION DATE: 1-19-2019

PANDA EXPRESS

NAS PAX RIVER  
PAX RIVER NAVY BASE  
PATUXENT RIVER, MD

A-402

ARCHITECTURAL  
DETAILS

CONSTRUCTION SET - 2017/07/30