

BRUNO MADERNA

AURA (1972)

PER ORCHESTRA

Commissionata dalla Chicago Symphony Orchestra

PARTITURA

RICORDI

ORGANICO DELL'ORCHESTRA - INSTRUMENTATION - ORCHESTERBESETZUNG

4 Flauti (anche 4 Ottavini) (Fl.-Ott.) - 4 *Flutes (also 4 Piccolos)* - 4 Flöten (auch 4 Piccoloflöten)
 3 Oboi (ob.) - 3 *Oboes* - 3 Oboen
 Corno inglese (E.H.) - *English horn* - Englisch Horn
 Clarinetto piccolo in mi bemolle (Eskl.) - *Clarinet in E flat* - Kleine Klarinette in Es
 2 Clarinetti in si bemolle (Kl.) - 2 *Clarinets in B flat* - 2 Klarinetten in B
 2 Clarinetti bassi in si bemolle (Bskl.) - 2 *Bass clarinets in B flat* - 2 Bassklarinetten in B
 3 Fagotti (il terzo anche controfagotto) (Fg.-Cfg.) - 3 *Bassoons (the third also Doublebassoon)* - 3 Fagotte (das dritte auch Kontrafagott)

4 Corni in fa (Hr.) - 4 *Horns in F* - 4 Hörner in F
 5 Trombe in do (Tr.) - 5 *Trumpets in C* - 3 Trompeten in C
 4 Tromboni (Pos.) - 4 *Trombones* - 4 Posaunen

Timpani (Timp.) - *Timpani* - Pauken
 Gran cassa (Gr. Tromm.) - *Bass Drum* - Grosse Trommel
 4 Piatti sospesi (P.tti sosp.) - 4 *Suspended Cymbals* - 4 Aufgehängte Becken
 4 Triangoli (Triang.) - *Triangle* - Triangel
 4 Gong (si bemolle, sol diesis, re, mi) - 4 *Gongs (B flat, G sharp, D, E)* - 4 Gong (B, Gis, D, E)
 Claves
 Sonagliera grande (Gr. Schell.) - *Big Jingle-bells* - Grosse Schellen
 Sonagliera piccola (Kl. Schell.) - *Little Jingle-bells* - Kleine Schellen
 6 Woods Blocks (Chin. Bloks)
 2 Congas
 Frusta - *Whip* - Peitsche

2 Xilofoni (Xyl.) - 2 *Xylophones* - 2 Xylophone
 Vibrafono (Vbr.) - *Vibraphone* - Vibraphone
 2 Marimbe (Mrb.) - 2 *Marimbas* - 2 Marimba
 Glockenspiel (Glsp.)
 Celesta (Cel.)
 2 Arpe (Ar.) - 2 *Harpes* - 2 Harfen

ARCHI - STRINGS - STREICHER

24 Violini - 24 *Violins* - 24 Violinen

12 Viole - 12 *Violas* - 12 Bratschen

10 Violoncelli - 10 *Cellos* - 10 Celli

8 Contrabbassi - 8 *Doublebasses* - 8 Kontrabässe

| A | B | C |
|---------------------|--------------------------------|--|
| violini 1, 2 | Contrabbassi 1, 2, 3 | Violini 3, 4, 5, 6 |
| Viola 1 | | Viole 2, 3, 4, 5 |
| Violoncello 1 | | Violoncelli 2, 3, 4, 5 |
| D | E | F |
| Violini 7, 8, 9, 10 | Violini 11, 12, 13, 14, 15, 16 | Violini 17, 18, 19, 20, 21, 22, 23, 24 |
| Viole 6, 7, 8, 9 | Viole 10, 11 | Viola 12 |
| Violoncelli 6, 7 | Violoncelli 8, 9 | Violoncello 10 |
| Contrabbassi 4, 5 | Contrabbassi 6, 7 | Contrabbasso 8 |

Durata: 20' c.

Bruno Maderna

AURA (1972)

per orchestra

A

VINO 1
VINO 2
VLA 1
VC 1

2/4
3/4
2/4
3/4
2/4

1
2
3
4
5
6

$\text{♩} = 72 \text{ ca}$

B

VINO 1
VINO 2

C

2° SOLO
VINO 3
VLA 4

2/4
3/4
2/4
3/4
2/4

D

3° SOLO
VINO 4

A

VINO 1
VINO 2
VLO 1
VC. 1

B

1.
3.
8
9
10
12
13

C

VINO 3
VINO 5
VLA 2
VLA 4
VC. 2
VC. 4
VC. 5

D

VINO 7
VINO 9
VLA 6
VC. 8
VINO 11
VINO 13
VLA 10
VC. 8
VINO 15
VINO 17
VLA 12
VC. 10

E

F

Handwritten musical score for a string ensemble, featuring various instruments (Violino, Viola, Violoncello) and dynamic markings (pp, mp, p, sost.). The score is divided into sections A through F, with measures numbered 1 through 26. The notation includes treble and bass clefs, key signatures, and various musical symbols such as slurs, ties, and accidentals.

A

VINO 1
VINO 2
VLA 1
VC. 10

B

CBSS 2

C

VINO 3
VINO 5
VLA 2
VLA 4
VC. 3
VC. 4

D

VLA 7
VLA 9
VLA 6
CBSS 4

E

VINO 11
VINO 13
VLA 10
VC. 8

F

VINO 17
VINO 19
VLA 12
VC. 10

Handwritten musical score for a string ensemble, featuring multiple staves (A-F) with various instruments (Violins, Violas, Cellos, Double Basses) and dynamic markings (pp, mp, mf, p, cresc., decresc., solo, etc.). The score includes measures 1 through 20, with some measures marked as solos or featuring specific dynamics. The notation includes treble and bass clefs, key signatures, and various musical symbols such as slurs, ties, and accidentals.

A

VNO 1
VNO 2
VLA 1
VC. 1

B

CRSS 1
CRSS 2
CRSS 3

C

VNO 3
VNO 4
VNO 5
VNO 6
VLA 2
VLA 3
VLA 4
VLA 5
VC. 2
VC. 3
VC. 4
VC. 5

D

VNO 7
VNO 8
VNO 9
VNO 10
VLA 6
VLA 7
CRSS 4

E

VNO 11
VNO 12
VNO 13
VNO 14
VNO 15
VNO 16
VNO 17
VNO 18
VNO 19
VNO 20
VNO 21
VNO 22
VNO 23
VNO 24
VNO 25
VNO 26
VNO 27
VNO 28
VNO 29
VNO 30
VNO 31
VNO 32
VNO 33
VNO 34
VNO 35
VNO 36
VNO 37
VNO 38
VNO 39
VNO 40
VNO 41
VNO 42
VNO 43
VNO 44
VNO 45
VNO 46
VNO 47
VNO 48
VNO 49
VNO 50
VNO 51
VNO 52
VNO 53
VNO 54
VNO 55
VNO 56
VNO 57
VNO 58
VNO 59
VNO 60
VNO 61
VNO 62
VNO 63
VNO 64
VNO 65
VNO 66
VNO 67
VNO 68
VNO 69
VNO 70
VNO 71
VNO 72
VNO 73
VNO 74
VNO 75
VNO 76
VNO 77
VNO 78
VNO 79
VNO 80
VNO 81
VNO 82
VNO 83
VNO 84
VNO 85
VNO 86
VNO 87
VNO 88
VNO 89
VNO 90
VNO 91
VNO 92
VNO 93
VNO 94
VNO 95
VNO 96
VNO 97
VNO 98
VNO 99
VNO 100
VNO 101
VNO 102
VNO 103
VNO 104
VNO 105
VNO 106
VNO 107
VNO 108
VNO 109
VNO 110
VNO 111
VNO 112
VNO 113
VNO 114
VNO 115
VNO 116
VNO 117
VNO 118
VNO 119
VNO 120
VNO 121
VNO 122
VNO 123
VNO 124
VNO 125
VNO 126
VNO 127
VNO 128
VNO 129
VNO 130
VNO 131
VNO 132
VNO 133
VNO 134
VNO 135
VNO 136
VNO 137
VNO 138
VNO 139
VNO 140
VNO 141
VNO 142
VNO 143
VNO 144
VNO 145
VNO 146
VNO 147
VNO 148
VNO 149
VNO 150
VNO 151
VNO 152
VNO 153
VNO 154
VNO 155
VNO 156
VNO 157
VNO 158
VNO 159
VNO 160
VNO 161
VNO 162
VNO 163
VNO 164
VNO 165
VNO 166
VNO 167
VNO 168
VNO 169
VNO 170
VNO 171
VNO 172
VNO 173
VNO 174
VNO 175
VNO 176
VNO 177
VNO 178
VNO 179
VNO 180
VNO 181
VNO 182
VNO 183
VNO 184
VNO 185
VNO 186
VNO 187
VNO 188
VNO 189
VNO 190
VNO 191
VNO 192
VNO 193
VNO 194
VNO 195
VNO 196
VNO 197
VNO 198
VNO 199
VNO 200
VNO 201
VNO 202
VNO 203
VNO 204
VNO 205
VNO 206
VNO 207
VNO 208
VNO 209
VNO 210
VNO 211
VNO 212
VNO 213
VNO 214
VNO 215
VNO 216
VNO 217
VNO 218
VNO 219
VNO 220
VNO 221
VNO 222
VNO 223
VNO 224
VNO 225
VNO 226
VNO 227
VNO 228
VNO 229
VNO 230
VNO 231
VNO 232
VNO 233
VNO 234
VNO 235
VNO 236
VNO 237
VNO 238
VNO 239
VNO 240
VNO 241
VNO 242
VNO 243
VNO 244
VNO 245
VNO 246
VNO 247
VNO 248
VNO 249
VNO 250
VNO 251
VNO 252
VNO 253
VNO 254
VNO 255
VNO 256
VNO 257
VNO 258
VNO 259
VNO 260
VNO 261
VNO 262
VNO 263
VNO 264
VNO 265
VNO 266
VNO 267
VNO 268
VNO 269
VNO 270
VNO 271
VNO 272
VNO 273
VNO 274
VNO 275
VNO 276
VNO 277
VNO 278
VNO 279
VNO 280
VNO 281
VNO 282
VNO 283
VNO 284
VNO 285
VNO 286
VNO 287
VNO 288
VNO 289
VNO 290
VNO 291
VNO 292
VNO 293
VNO 294
VNO 295
VNO 296
VNO 297
VNO 298
VNO 299
VNO 300
VNO 301
VNO 302
VNO 303
VNO 304
VNO 305
VNO 306
VNO 307
VNO 308
VNO 309
VNO 310
VNO 311
VNO 312
VNO 313
VNO 314
VNO 315
VNO 316
VNO 317
VNO 318
VNO 319
VNO 320
VNO 321
VNO 322
VNO 323
VNO 324
VNO 325
VNO 326
VNO 327
VNO 328
VNO 329
VNO 330
VNO 331
VNO 332
VNO 333
VNO 334
VNO 335
VNO 336
VNO 337
VNO 338
VNO 339
VNO 340
VNO 341
VNO 342
VNO 343
VNO 344
VNO 345
VNO 346
VNO 347
VNO 348
VNO 349
VNO 350
VNO 351
VNO 352
VNO 353
VNO 354
VNO 355
VNO 356
VNO 357
VNO 358
VNO 359
VNO 360
VNO 361
VNO 362
VNO 363
VNO 364
VNO 365
VNO 366
VNO 367
VNO 368
VNO 369
VNO 370
VNO 371
VNO 372
VNO 373
VNO 374
VNO 375
VNO 376
VNO 377
VNO 378
VNO 379
VNO 380
VNO 381
VNO 382
VNO 383
VNO 384
VNO 385
VNO 386
VNO 387
VNO 388
VNO 389
VNO 390
VNO 391
VNO 392
VNO 393
VNO 394
VNO 395
VNO 396
VNO 397
VNO 398
VNO 399
VNO 400
VNO 401
VNO 402
VNO 403
VNO 404
VNO 405
VNO 406
VNO 407
VNO 408
VNO 409
VNO 410
VNO 411
VNO 412
VNO 413
VNO 414
VNO 415
VNO 416
VNO 417
VNO 418
VNO 419
VNO 420
VNO 421
VNO 422
VNO 423
VNO 424
VNO 425
VNO 426
VNO 427
VNO 428
VNO 429
VNO 430
VNO 431
VNO 432
VNO 433
VNO 434
VNO 435
VNO 436
VNO 437
VNO 438
VNO 439
VNO 440
VNO 441
VNO 442
VNO 443
VNO 444
VNO 445
VNO 446
VNO 447
VNO 448
VNO 449
VNO 450
VNO 451
VNO 452
VNO 453
VNO 454
VNO 455
VNO 456
VNO 457
VNO 458
VNO 459
VNO 460
VNO 461
VNO 462
VNO 463
VNO 464
VNO 465
VNO 466
VNO 467
VNO 468
VNO 469
VNO 470
VNO 471
VNO 472
VNO 473
VNO 474
VNO 475
VNO 476
VNO 477
VNO 478
VNO 479
VNO 480
VNO 481
VNO 482
VNO 483
VNO 484
VNO 485
VNO 486
VNO 487
VNO 488
VNO 489
VNO 490
VNO 491
VNO 492
VNO 493
VNO 494
VNO 495
VNO 496
VNO 497
VNO 498
VNO 499
VNO 500
VNO 501
VNO 502
VNO 503
VNO 504
VNO 505
VNO 506
VNO 50

[illegible]

A

VNO 1 8

VNO 2 4

VLA 1 4

VC 1 4

B

1) 4

3) 4

C

VNO 3 4

VNO 4 4

VLA 2 3

VLA 3 3

VC 2 3

VC 4 3

VC 5 3

D

VNO 5 8

VNO 6 8

VLA 4 3

VLA 5 3

VC 6 3

VC 7 3

CBSA 5 3

E

VNO 8 12

VNO 9 12

VNO 10 12

VLA 6 4

VLA 7 4

VC 8 3

VC 9 3

CBSA 6 3

F

VNO 11 8

VNO 12 8

VNO 13 8

VNO 14 8

VLA 8 4

VC 10 3

CBSA 7 3

19th VNO SOLO

21st VNO SOLO

22nd VNO SOLO

23rd VNO SOLO

24th VNO SOLO

25th VNO SOLO

26th VNO SOLO

27th VNO SOLO

28th VNO SOLO

29th VNO SOLO

30th VNO SOLO

31st VNO SOLO

32nd VNO SOLO

33rd VNO SOLO

34th VNO SOLO

35th VNO SOLO

36th VNO SOLO

37th VNO SOLO

38th VNO SOLO

39th VNO SOLO

40th VNO SOLO

41st VNO SOLO

42nd VNO SOLO

43rd VNO SOLO

44th VNO SOLO

45th VNO SOLO

46th VNO SOLO

47th VNO SOLO

48th VNO SOLO

49th VNO SOLO

50th VNO SOLO

51st VNO SOLO

52nd VNO SOLO

53rd VNO SOLO

54th VNO SOLO

55th VNO SOLO

56th VNO SOLO

57th VNO SOLO

58th VNO SOLO

59th VNO SOLO

60th VNO SOLO

61st VNO SOLO

62nd VNO SOLO

63rd VNO SOLO

64th VNO SOLO

65th VNO SOLO

66th VNO SOLO

67th VNO SOLO

68th VNO SOLO

69th VNO SOLO

70th VNO SOLO

71st VNO SOLO

72nd VNO SOLO

73rd VNO SOLO

74th VNO SOLO

75th VNO SOLO

76th VNO SOLO

77th VNO SOLO

78th VNO SOLO

79th VNO SOLO

80th VNO SOLO

81st VNO SOLO

82nd VNO SOLO

83rd VNO SOLO

84th VNO SOLO

85th VNO SOLO

86th VNO SOLO

87th VNO SOLO

88th VNO SOLO

89th VNO SOLO

90th VNO SOLO

91st VNO SOLO

92nd VNO SOLO

93rd VNO SOLO

94th VNO SOLO

95th VNO SOLO

96th VNO SOLO

97th VNO SOLO

98th VNO SOLO

99th VNO SOLO

100th VNO SOLO

Handwritten musical score for a string orchestra, featuring staves A through F. The score includes various musical notations such as notes, rests, dynamics (mf, mp, p, pp), and articulation marks. The notation is dense and includes many handwritten annotations and corrections.

B

Handwritten musical score for three staves. The first staff has a treble clef and a key signature of one sharp (F#). The second and third staves have bass clefs. The music is in 4/4 time. The first staff has a melody starting with a quarter note G4, followed by a quarter rest, then a quarter note A4, and a quarter note B4. The second staff has a bass line starting with a quarter note G3, followed by a quarter note F#3, and a quarter note E3. The third staff has a bass line starting with a quarter note G2, followed by a quarter note F#2, and a quarter note E2. The music continues with various notes and rests, including triplets and dynamic markings like 'mp' and 'f'.

[illegible]

D

Handwritten musical score for a string quartet, featuring parts for Violin I (Vn. I), Violin II (Vn. II), Viola (Vla.), Violoncello (Vcl.), and Contrabass (Cb.). The score is divided into measures 39, 40, 41, 42, 43, 44, and 45. The notation includes various musical symbols such as notes, rests, dynamics (pp, mf, mp), and articulation marks. There are also handwritten annotations like "f + 10v. a2" and "f + 7v. a2".

F

VL. 19 20
VL. 21 22
VL. 23 24
VL. 25 26
VL. 27 28

A

VL. 1 4/4

V. 2 4/4

VA 1 4/4

VC. 1 4/4

B

CB. 1 4/4

C

VL. 3 4/4

V. 5 4/4

VA 3 4/4

VA 4 4/4

VC. 3 4/4

VC. 4 4/4

D

VL. 7 4/4

VL. 9 4/4

VA 7 4/4

VA 8 4/4

VC. 6 4/4

CB. 5 4/4

E

V. 11 4/4

V. 13 4/4

V. 15 4/4

VA 10 4/4

VA 11 4/4

VC. 8 4/4

F

VL. 17 4/4

V. 19 4/4

V. 21 4/4

VL. 23 4/4

VA 12 4/4

VC. 10 4/4

CB. 8 4/4

Handwritten musical score with staves and notes. The score is divided into sections A through F. Each section contains multiple staves for different instruments. The notation includes notes, rests, and dynamic markings such as *mf*, *mp*, *p*, *pp*, and *ppp*. There are also markings for *DIM.* (diminuendo) and *acc.* (accelerando). The time signature is 4/4. The score is written in a key with one sharp (F#). The page number 10 is at the bottom.

ABC

D

E**F**

GLSP. 6
VBR. 6
MRB.1 6
MRB.2 6
CEL. 6
AR. 1 6
AR. 2 6

2
4

VL. 2 6
VL. 3 6
VL. 5 6
VLA 1,2 6
VLA 4,5 6
VC. 2,3 6
VC. 4,5 6
CB. 1,2,3 6
VL. 7,8 6
VL. 9,10 6
VLA 6,7 6
VLA 8,9 6
VC. 6,7 6
VL. 11,12 6
VL. 13,14 6
VLA 10,11 6
VC. 8,9 6
VL. 17,18 6
VL. 19,20 6
VL. 21,22 6
VL. 23,24 6
VLA 12 6

ABC

D

E

F

2
4

3 TRIANGOLI
2 PITISOSP.
CONG MEDIO ACUTO

LASCIAZ VBR.
L. VBR.
L. VBR.

RULLO AL BORDO
CON 2 ASTE METAL.

$$\begin{array}{ccc} 3 & 1 & 1 \\ 8 & 8 & 8 \end{array} \quad \begin{array}{cc} 3 & 2 \\ 8 & 8 \end{array}$$

NB. OTTAVINI, GLSP, CELESTA, XYLOPHONI RISUONANO UNA 8^{va} SOPRA

2/4 3/4 4/4

$\text{♩} = 108 \text{ ca.}$

OB. 1 *p espr.*

KL. 1 *mf*

Bask. 1 *p espr.*

89 90 91 92 93

GL. 1 *p. mezzo voce*

XYC. *LEICHTER HOLZSCH.*

VBR. *MOTOR AUF* *mf SEMPRE* *MOTOR AB* *MOTOR AUF* *MOTOR AB*

HAB. *WEICHE SCHL.* *mf SEMPRE* *WEICHE SCHL.* *mf SEMPRE*

CA. $\text{♩} = 108 \text{ ca.}$

AR. 1 *mf SEMPRE* *L. VBR.*

AR. 2 *mf SEMPRE*

C

VLNI 3,4 8 *p poco cresc.*

VLA 2,3 4,5 11

CELLI 2,3 4,5 11

D

VLNI 7,8 9,10 *mf*

VLE 6,7 8,9 10 *p*

CELLI 6,7 8,9 10 *p*

D

CBSS 4,5 *p*

Handwritten musical score for percussion and woodwinds. The score is written for multiple staves, including:

- FLUTE (FL.)**: Measures 100-106, featuring complex rhythmic patterns and dynamics like *f* and *p*.
- XYLOPHONE (XYL.)**: Measures 100-106, with dynamic markings like *f* and *p*.
- VIBRAPHONE (VBR.)**: Measures 100-106, including a section labeled "MOTOR AVE" with a triplet of eighth notes.
- MARACA (MRB.)**: Measures 100-106, with dynamic markings like *f* and *p*.
- CELESTE (CEL.)**: Measures 100-106, with dynamic markings like *f* and *p*.
- AR. 1** and **AR. 2**: Measures 100-106, with dynamic markings like *f* and *p*.

The score includes various musical notations such as triplets, slurs, and dynamic markings (*f*, *p*, *mp*, *sf*).

100 101 102 103 104 105 106

2 TRIANG.

CLAVES

2 HOLZKISTEN ZUSAMMENSCHLAGEN

Handwritten musical score for strings, starting at measure 104. The score is written for:

- VI. 1** (Violin 1)
- VI. 2** (Violin 2)
- VLA. 1** (Viola 1)
- CELLO** (Cello)

The score includes various musical notations such as triplets, slurs, and dynamic markings (*f*, *p*, *sf*).

D

Handwritten musical score for woodwinds, starting at measure 100. The score is written for:

- CELLI 6-8** (Celli 6-8)
- OB. 4-5** (Oboe 4-5)

The score includes various musical notations such as triplets, slurs, and dynamic markings (*f*, *p*).

E

Handwritten musical score for woodwinds, starting at measure 100. The score is written for:

- CELLI 8-9** (Celli 8-9)
- CB. 6-7** (Clarinet 6-7)

The score includes various musical notations such as triplets, slurs, and dynamic markings (*f*, *p*).

F

Handwritten musical score for strings, starting at measure 100. The score is written for:

- VL. 13-18** (Violins 13-18)
- VL. 23-28** (Violins 23-28)
- VLA. 12** (Viola 12)
- CELLO 10** (Cello 10)
- CB. 8** (Clarinet 8)

The score includes various musical notations such as triplets, slurs, and dynamic markings (*f*, *p*, *sost.*).

106 bis

2 ♩ = 120 ca

4

Handwritten musical score for measures 106 bis to 108. The score is written for three staves (treble, alto, and bass clefs). It features complex rhythmic patterns, including triplets and sixteenth notes, and dynamic markings such as *ff* (fortissimo) and *pp* (pianissimo). The tempo is indicated as 2 ♩ = 120 ca. The key signature has one sharp (F#).

Handwritten musical score for measures 107 and 108. The score is written for multiple staves, including woodwinds (Oboe, Flute, Clarinet), strings (Violin, Viola, Violoncello, Contrabasso), and piano. It features complex rhythmic patterns, including triplets and sixteenth notes, and dynamic markings such as *pp* (pianissimo) and *ff* (fortissimo). The tempo is indicated as 2 ♩ = 120 ca. The key signature has one sharp (F#). The score includes section markers A, B, C, D, E, and F. The tempo is indicated as 2 ♩ = 120 ca. The key signature has one sharp (F#).

9 8

OT.

FL.

OB.

E. H.

CL.

KL.

STAGGATISSIMO

BSSKL.

TUTTI DIMINUENDO

6 8

2 8

109

110

111

112

9 8

6 8

2 8

HRB.

A

B

C

D

E

F

SIMILE

DIM.

Pizz.

P

TUTTI DIMINUENDO

[illegible]

GLSR. 3
 XYL. 4/2
 VBR. 4
 MRB. 3/4
 CEL. $\text{♩} = 100$
 AR.1
 AR.2
 3 123 124 4 125
 B
 CRSS. 1/2
 C
 VLN. 3/4
 VE. 2/3
 VC. 2/3
 VLN. 7/8
 VE. 6/8
 VC. 3/4
 CB. 5/8
 D
 VLN. 14/16
 VE. 10/16
 VC. 8/16
 CB. 5/16
 E
 VLN. 19/20
 VE. 14/16
 VC. 8/16
 CB. 5/16
 F
 VLN. 25/26
 VE. 12/16
 VC. 10/16
 CB. 8/16

Musical score for a large ensemble, featuring various instruments and sections (B, C, D, E, F). The score includes dynamic markings (f, p, mf, cresc., sost.), articulation (acc.), and performance instructions (3, 4, 5, 123, 124, 125, 126). The tempo is marked $\text{♩} = 100$. The score is divided into measures, with some measures containing multiple staves for different instruments.

[illegible]

130 bis $\text{♩} = 100 \text{ ca.}$

==

==

$\frac{3}{4}$

$\frac{2}{4}$

BACCH. MORBIDE

Musical score for MRB, AR.1, and AR.2. The score includes complex rhythmic patterns with triplets and quintuplets, and dynamic markings such as *mp* and *f*. The key signature is B-flat major.

BACCH. DURE

Musical score for string quartet (VNI, VLA, VC, CB) and woodwinds (CL, VLE, VC, CB). The score is divided into systems A through F. System A includes a large '3' and '4' indicating a 3/4 time signature. System B includes a large '1' and '4' indicating a 1/4 time signature. System C includes a large '3' and '4' indicating a 3/4 time signature. System D includes a large '3' and '4' indicating a 3/4 time signature. System E includes a large '3' and '4' indicating a 3/4 time signature. System F includes a large '3' and '4' indicating a 3/4 time signature. The score includes various musical notations, including notes, rests, and dynamic markings such as *f*, *mp*, *p*, and *sost.*. The key signature is B-flat major.

4
4

Handwritten musical score for orchestra and voices. The score is divided into systems, each containing staves for various instruments and voices. The instruments listed include Flute (Fl.), Oboe (Ob.), English Horn (Eng. H.), Clarinet (Cl.), Bassoon (Bsn.), Violin (VL.), Viola (VLE.), Violoncello (VC.), Double Bass (CB.), and Piano (P.). The voices listed include Soprano (S.), Alto (A.), Tenor (T.), and Bass (B.). The score includes various musical notations such as notes, rests, and dynamic markings (e.g., *f*, *pp*, *staccato*, *sempre stacc.*). The tempo is marked as *Allegro* (Allegro). The score is numbered 140 through 147. The page number is 25.

Handwritten musical score for orchestra and voices. The score is divided into systems, each containing staves for various instruments and voices. The instruments listed include Flute (Fl.), Oboe (Ob.), English Horn (Eng. H.), Clarinet (Cl.), Bassoon (Bsn.), Violin (VL.), Viola (VLE.), Violoncello (VC.), Double Bass (CB.), and Piano (P.). The voices listed include Soprano (S.), Alto (A.), Tenor (T.), and Bass (B.). The score includes various musical notations such as notes, rests, and dynamic markings (e.g., *f*, *pp*, *staccato*, *sempre stacc.*). The tempo is marked as *Allegro* (Allegro). The score is numbered 140 through 147. The page number is 25.

160 BIS

$\text{♩} = 66 \text{ ca.}$

OB. 1a

p < *mp* > *pp* *p espr.* *pp* < *mp* *cresc.* *f*

RUBATO

==

1° OB.

pp *GRADUALLY CRESC.* *p molto espressivo* *mf* *p*

1° FLAUTO

pp

2° FLAUTO

pp

GLSP. f f f f

XYL. f f f f

VBR. f f f f *arosc.*

MRB. f f f f *arosc.*

CEL. f f f f *arosc.*

AR.1 f f f f

AR.2 f f f f

161 162 163 164

B CBSS1 f f $\text{p} < \text{f}$ f *Pizz.*

C $\text{f} = 84$

VC. f f f f *mf*

D VC. f f f f *arco* $\text{p} < \text{f}$ f *Pizz.*

CBSS1 f f f f

E VC. f f f f $\text{p} < \text{f}$ f *Pizz.*

CBSS1 f f f f

F $\text{f} = 84$

VC. f f f f $\text{p} < \text{f}$ f *Pizz.*

CBSS1 f f f f

13, 12 19, 24 21, 22 23, 24

POSAUNEN
OPEN

164815

• = 2" - 4" ; ○ = 5" - 7"

POS. 1°

DINAMICA < > SEMPRE, RAGGIUNGENDO AL MASSIMO *mf*

POS. 2°

PAUSE FRA I PATTERNS DA 3" A 6"

POS. 3°

POS. 4°

$\text{♩} = 84$

GLSK

XYL

VBR

MRB

CEL

AR

165

$\text{♩} = 84$

VL 3,4 5,6

VLE 2,3 4,5

4

VL 7,8 9,10

VLE 11,12 13,14

$\text{♩} = 84$

VL 15,16 17,18

VLE 19,20 21,22

23,24

$\text{♩} = 84$

Handwritten musical score for a large ensemble, featuring multiple staves with various instruments and sections. The score is divided into measures, with measure numbers 166, 167, 168, 169, and 170 visible.

Instrumental Sections:

- GLSP.** (Glockenspiel)
- XYL.** (Xylophone)
- HRB.** (Harp)
- CEL.** (Celesta)
- AR.1** (Arpeggiator 1)
- AR.2** (Arpeggiator 2)
- KL. SCHELEN** (Klavierschellen)
- GR. SCHELEN** (Großscheitel)
- 1/2 TRIANG.** (Triangle)
- 3/4 TRIANG.** (Triangle)
- CLOVES** (Cloves)
- 6 CHINES. BLOWS** (Chinese Bells)
- B.** (Bassoon)
- C.** (Clarinet)
- D.** (Double Bass)
- E.** (Euphonium)
- F.** (Fagott)

Measure Numbers: 166, 167, 168, 169, 170

Tempo/Time Signature: 2/4

Dynamic Markings: *f*, *p*, *crasc.*, *sost.*, *sf*, *ff*, *tr.*

Performance Instructions: *tr.*, *ausklingen*, *Pizz.*

Handwritten Notes: The score includes various musical notations such as notes, rests, and articulation marks. There are also handwritten annotations like "tr." and "ausklingen" indicating specific performance techniques or effects.

♩ = 144

GLSP. 3

XYL. 4

VBR. 3

HRB. 3

CEL. 3

AR. 1 3

AR. 2 3

KL. S. S. 3

GR. S. S. 4

2 TRIANG. 4

3 TRIANG. 4

CLAVES 4

6 CHIN. 4

BLOKS 4

2 CONCAS 4

GR. TRONH. 4

mit zwei beson. p

ARCO 3

PIZZ. 4

171 172

BSSKL. 3

FG. 3

CF. 3

HRB. 3

SCHL. 3

ARPE 3

AUSKUNGEN 3

AUSKUNGEN 3

173 174 175 176 177 178 179

ATTACCA SUBITO

2 3 3 2 1 2 5

8 8 16 8 16 8 16

B CB. 3

VL. 3,4 4

VL. 5,6 4

C VL. 2,3 4

VL. 4,5 4

VC. 2,3 3

VC. 4,5 4

D VL. 7,8 3

VL. 9,10 4

CB. 4 3

CB. 5 4

E VL. 11,12 3

VL. 13,14 4

VL. 15,16 4

F CB. 6 3

CB. 7 4

VL. 17,18 3

VL. 19,20 4

VL. 21,22 4

VL. 23,24 4

CB. 8 3

A VL. 1 3

VL. 2 3

B VL. 1 3

VL. 2 3

C VL. 1 3

VL. 2 3

D VL. 1 3

VL. 2 3

E VL. 1 3

VL. 2 3

F VL. 1 3

VL. 2 3

CB. 3

CB. 4

CB. 5

CB. 6

CB. 7

CB. 8

CB. 9

CB. 10

CB. 11

CB. 12

CB. 13

CB. 14

CB. 15

CB. 16

CB. 17

CB. 18

CB. 19

CB. 20

CB. 21

CB. 22

CB. 23

CB. 24

CB. 25

CB. 26

CB. 27

CB. 28

CB. 29

CB. 30

CB. 31

CB. 32

CB. 33

CB. 34

CB. 35

CB. 36

CB. 37

CB. 38

CB. 39

CB. 40

CB. 41

CB. 42

CB. 43

CB. 44

CB. 45

CB. 46

CB. 47

CB. 48

CB. 49

CB. 50

CB. 51

CB. 52

CB. 53

CB. 54

CB. 55

CB. 56

CB. 57

CB. 58

CB. 59

CB. 60

CB. 61

CB. 62

CB. 63

CB. 64

CB. 65

CB. 66

CB. 67

CB. 68

CB. 69

CB. 70

CB. 71

CB. 72

CB. 73

CB. 74

CB. 75

CB. 76

CB. 77

CB. 78

CB. 79

CB. 80

CB. 81

CB. 82

CB. 83

CB. 84

CB. 85

CB. 86

CB. 87

CB. 88

CB. 89

CB. 90

CB. 91

CB. 92

CB. 93

CB. 94

CB. 95

CB. 96

CB. 97

CB. 98

CB. 99

CB. 100

Handwritten musical score for a string quartet and piano. The score is divided into systems A through F. The instruments are: BSSA. (Bassoon), FG. (Flute), CR. (Clarinet), ARPE. (Arpeggio), FRUSTA (Violin), CLAVES (Piano), 2 CONCAS (Cello), GR. (Guitar), VC. (Violoncello), CB. (Contrabasso), and VC. 10. (Violoncello). The tempo is marked 'A POLO A POLO CRESCENDO'. The score includes various musical notations such as notes, rests, and dynamic markings (pp, f, crescendo). The page number 180 is visible at the bottom left.

$\text{♩} = 72$

[illegible]

1 2 3 4 5

Handwritten musical score for a string quartet and woodwinds. The score is organized into systems labeled A through F, with measures 205 through 208 indicated. The notation includes various musical symbols such as notes, rests, dynamics (e.g., *mf*, *f*, *pp*), articulation marks (e.g., *acc.*, *gliss.*), and performance instructions (e.g., *ARCO*, *PIZZ.*, *L.B.*). The woodwind section (top) includes parts for Flute (ARPE), Oboe (MHP), Clarinet (CLINETS), Bassoon (BLOCS), and Contrabass (2 CON4M). The string section (bottom) includes parts for Violin I (VLA), Violin II (VC), Viola (VLA), Violoncello (VC), and Double Bass (CB). The score is written in a complex, handwritten style with many annotations and markings.

Handwritten musical score for a symphony, featuring multiple staves with musical notation, dynamics (f, p, dim, sf, piz.), and performance instructions (SEMPRE, SUBITO, a2). The score includes measures 209, 210, and 212, with a tempo marking of 100. The notation is in G major and 4/4 time. The score is divided into sections A, B, C, D, E, and F, with measures 209, 210, and 212 marked at the top of each section. The score is for a full orchestra, including strings, woodwinds, brass, and percussion.

Handwritten musical score for orchestra and strings. The score is divided into systems, with measures 243, 244, 245, and 246 marked. The instruments listed on the left include HR. (Horns), GLSP (Glockenspiel), XYB (Xylophone), VBR (Vibraphone), CEL. (Cello), AR. 1 & 2 (Arpeggiators), PIANI SOSP. DIFF. INTON. (Piano Sustained Differently Intoned), MEDIO-ACUTO MEDIO (Medio-Acute Medial), GRAVE P. SRAVISSIMO (Grave P. SRAVISSIMO), and various string sections (CB., VL., VC., VLE., VLA., VC.). The score includes dynamic markings such as *f*, *dim.*, *p*, *cresc.*, and *sf*. There are also performance instructions like ** SPEGNERE LA VIBRAZ.* and *BATTUTI SULLA CUPOLA CON BACCH. DURA*. The score is written in a complex, handwritten style with many annotations and markings.

Handwritten musical score for a symphony, featuring multiple staves and sections labeled A, C, D, E, and F. The score includes various musical notations, dynamics, and performance instructions.

Sections and Staves:

- HE:** Horns, E-flat section.
- GLSP:** Glockenspiel.
- XYE:** Xylophone.
- VBA:** Violoncello.
- MRS:** Maracas.
- CEL:** Cello.
- AR.1:** Arpeggiated strings 1.
- AR.2:** Arpeggiated strings 2.
- PTI SOSP:** Percussion, suspended.
- 3 (Sib) B:** Bongos, B-flat section.
- CONG SOE HXIS (re) D:** Conga, Souble Bass, Horns in D.
- A:** Violins (VL), Viola (VLA), Violoncello (VC.1).
- C:** Violins (VL), Viola (VLE), Violoncello (VC.2).
- D:** Violins (VL), Viola (VLE), Violoncello (VC.3), Contrabass (CB).
- E:** Violins (VL).
- F:** Viola (VLA), Violoncello (VC.4), Contrabass (CB.8).

Performance Instructions and Dynamics:

- Tempo/Character:** *con mazzo MORBIDA E PESANTE* (with morbid and heavy mallet).
- Dynamic Markings:** *f* (forte), *p* (piano), *mf* (mezzo-forte), *mp* (mezzo-piano), *dim.* (diminuendo), *cresc.* (crescendo), *mp* (mezzo-piano), *mf* (mezzo-forte).
- Articulation:** *3* (triplets), *4* (quadruplets), *SEMPRE ff* (always fortissimo).
- Other:** *Pizz.* (pizzicato), *mp* (mezzo-piano), *mf* (mezzo-forte).

Measure Numbers: 217, 218, 219, 220.

Handwritten musical score for a large ensemble, featuring multiple staves and sections labeled A, B, and F.

Section 1 (Top): Four staves (1-4) with a 2/4 time signature. Dynamics include *p*, *cresc.*, and *ff*. A 5/4 time signature change is indicated.

Section 2 (Middle): Staves for GLSP, Xye, VBR, MRB, CEL, AR.1, and AR.2. Includes complex rhythmic patterns and dynamics like *ff* and *mf*.

Section 3 (Lower Middle): Staves for Pm, SOSP, Sib (B), SOCKS, RE (D), and MI (E). Includes a 5/4 time signature and dynamics like *mf* and *f*.

Section A: Violin parts (VL. 1, VL. 2, VLA 1) with a 2/4 time signature and dynamics like *ff*.

Section B: Bassoon part (CB. 2) with a 2/4 time signature and dynamics like *f* and *cresc.*.

Section F: Flute part (FL. 1) with a 2/4 time signature and dynamics like *f* and *cresc.*.

Handwritten annotations include "221", "222", "5", "4", "3", "7", "8", "1", "2", "3", "4", "5", "6", "7", "8", "9", "10", "11", "12", "13", "14", "15", "16", "17", "18", "19", "20", "21", "22", "23", "24", "25", "26", "27", "28", "29", "30", "31", "32", "33", "34", "35", "36", "37", "38", "39", "40", "41", "42", "43", "44", "45", "46", "47", "48", "49", "50", "51", "52", "53", "54", "55", "56", "57", "58", "59", "60", "61", "62", "63", "64", "65", "66", "67", "68", "69", "70", "71", "72", "73", "74", "75", "76", "77", "78", "79", "80", "81", "82", "83", "84", "85", "86", "87", "88", "89", "90", "91", "92", "93", "94", "95", "96", "97", "98", "99", "100".

222 BIS

$\text{♩} = 120 \text{ ca.}$

Handwritten musical score for four staves. The first staff is marked *f. cresc.* and the second *f. cresc.*. The third and fourth staves are marked *f. cresc.*. The score includes various musical notations such as notes, rests, and dynamic markings.

Attacca
batt. 223

Indipendentemente dal direttore

Handwritten musical score for four staves. The first staff is marked *4 PTTI SOSP.* and the second *3 (Sib) B*. The third and fourth staves are marked *CON SOSP. (re) D*. The score includes various musical notations such as notes, rests, and dynamic markings.

Handwritten musical score for four staves. The first staff is marked *2 4* and the second *4*. The third and fourth staves are marked *5 4*. The score includes various musical notations such as notes, rests, and dynamic markings.

$\text{♩} = 84$

FL. *SEMPRE ppp*
E LEGATISSIMO

OB. *SEMPRE ppp*
E LEGATISSIMO

223 *SEMPRE MUTED* 224

GLP. *SEMPRE MUTED*

XVL. *SEMPRE MUTED*

VBR. *SEMPRE MUTED*

MRS. *SEMPRE MUTED*

CEL. *p*

AR1 *p*

AR2 *mf*

PERCUSSIONE LASCIA VIBRARE FINO AD ESTINZIONE

B [CB. *p*

C [VL. *ppp* *cresc.*
VLE *ppp* *cresc.*
VC. *ppp* *cresc.*

$\text{♩} = 84$

E [VL. *f* *espr.*
VLE *f* *espr.*
VC. *f* *espr.*
CB. *f* *espr.*

F [VL. *f* *espr.*
VLA *f* *espr.*

Handwritten musical score for a symphony orchestra, featuring multiple staves for various instruments. The score includes dynamic markings such as *ppp*, *pp*, *p*, *f*, *mf*, *sf*, *cresc.*, *sost.*, and *arco*. The tempo is marked *SEMPRE ppp E LEGATISS.*. The score is divided into sections labeled A, B, C, D, E, and F. The notation includes various musical symbols, including notes, rests, and articulation marks. The score is written in a complex, multi-measure format, with some measures containing multiple notes and rests. The overall style is that of a professional musical manuscript.

A

C

D

E

F

Musical score for a symphony orchestra, featuring woodwinds, strings, and percussion. The score is divided into systems A through F.

System A: Includes parts for Flute (Fl.), Oboe (Ob.), English Horn (EH), Euphonium (Eup.), and Trombone (Tb.). The woodwinds play a melodic line with triplets and sixteenth notes. The strings play a rhythmic pattern.

System B: Includes parts for Clarinet (Cl.), Bassoon (Bs.), and Trumpet (Tr.). The woodwinds continue their melodic line. The strings play a rhythmic pattern.

System C: Includes parts for Violin (Vl.), Viola (Vla.), and Violoncello (Vcl.). The strings play a rhythmic pattern.

System D: Includes parts for Violin (Vl.), Viola (Vla.), and Violoncello (Vcl.). The strings play a rhythmic pattern.

System E: Includes parts for Violin (Vl.), Viola (Vla.), and Violoncello (Vcl.). The strings play a rhythmic pattern.

System F: Includes parts for Violin (Vl.), Viola (Vla.), and Violoncello (Vcl.). The strings play a rhythmic pattern.

The score includes various musical notations such as notes, rests, and dynamic markings (e.g., *ppp*, *f*, *mf*, *cresc.*). The tempo is marked *FIATI SEMPRE ppp E LEGATISSIMO*. The score is numbered 229, 230, 231, and 232.

[illegible]

FL.
 OB.
 E.H.
 ESCL.
 KL.
 TR.
 XYC.
 FIB.
 CEL.
 AR.
 A.
 B.
 C.
 D.
 E.
 F.

CAMBIA IN OTTAVINO (PIRE) 1
 (KLINGT 8^{va} OREN)
 " " " " 2

SEMPRE **ppp** E LEGATISSIMO

ppp E
 LEGATISSIMO

TEN. - HARM. HUTE - 1
 TEN. - OPEN - 2
 TEN. - BASS - HARM. HUTE 3
 BASS. - OPEN - 4

POS.

SEMPRE **ppp** E LEGATISS.

237 238 239 240

SEMPRE **mp**
 SEMPRE **f**
p cresc.
f
mp cresc.
f
p

8-
 3-
 4-
 5-
 6-
 7-
 8-
 9-
 10-
 11-
 12-
 13-
 14-
 15-
 16-
 17-
 18-
 19-
 20-
 21-
 22-
 23-
 24-

Handwritten musical score for a symphony, featuring multiple staves with musical notation, including notes, rests, and dynamic markings. The score is written in a system of staves, with various instruments and voices indicated by the staff lines and the text below them. The notation includes treble and bass clefs, time signatures, and various musical symbols such as notes, rests, and accidentals. The text below the staves includes instrument names and parts, such as "V. 1", "V. 2", "V. 3", "V. 4", "V. 5", "V. 6", "V. 7", "V. 8", "V. 9", "V. 10", "V. 11", "V. 12", "V. 13", "V. 14", "V. 15", "V. 16", "V. 17", "V. 18", "V. 19", "V. 20", "V. 21", "V. 22", "V. 23", "V. 24", "V. 25", "V. 26", "V. 27", "V. 28", "V. 29", "V. 30", "V. 31", "V. 32", "V. 33", "V. 34", "V. 35", "V. 36", "V. 37", "V. 38", "V. 39", "V. 40", "V. 41", "V. 42", "V. 43", "V. 44", "V. 45", "V. 46", "V. 47", "V. 48", "V. 49", "V. 50", "V. 51", "V. 52", "V. 53", "V. 54", "V. 55", "V. 56", "V. 57", "V. 58", "V. 59", "V. 60", "V. 61", "V. 62", "V. 63", "V. 64", "V. 65", "V. 66", "V. 67", "V. 68", "V. 69", "V. 70", "V. 71", "V. 72", "V. 73", "V. 74", "V. 75", "V. 76", "V. 77", "V. 78", "V. 79", "V. 80", "V. 81", "V. 82", "V. 83", "V. 84", "V. 85", "V. 86", "V. 87", "V. 88", "V. 89", "V. 90", "V. 91", "V. 92", "V. 93", "V. 94", "V. 95", "V. 96", "V. 97", "V. 98", "V. 99", "V. 100".

Handwritten musical score for a symphony, featuring multiple staves with musical notation, including notes, rests, and dynamic markings. The score is divided into measures, with measure numbers 246, 247, 248, and 249 visible. The notation includes various musical symbols such as clefs, time signatures, and dynamic markings like *pp*, *mf*, and *f*. The score is written in a cursive, handwritten style.

Handwritten musical score for a large ensemble, featuring multiple staves for various instruments and voices. The score is written in a complex, multi-measure format, with many notes, rests, and dynamic markings. The instruments listed on the left include:

- DR. 1
- R.
- E.H.
- ESK.
- h.
- Bsske.
- FR.
- Pes.
- NRB 1
- AR. 1
- AR. 2
- VLA 1
- VC 1
- CB 1
- VL 1
- VLE 1
- VC 1
- VL 1
- D
- VL 1
- VC 1
- CB 1
- V.
- E
- VL 1
- VC 1
- CS.
- VL 1
- F
- VLA 1
- VC 1

The score includes various musical notations such as notes, rests, and dynamic markings (e.g., *ppp*, *pp*, *p*, *mf*, *f*, *cresc.*, *dim.*). It also features section numbers (e.g., 251, 252, 253) and performance instructions like *SEMPRE ppp* and *(NON PORTATO)*.

[illegible]

LUNGA

LUNGA

258

259

LUNGA

Sulla lunga corona, il direttore inviterà i 4 corni e le 5 trombe a iniziare l'improvvisazione [1].

Le trombe rimangono in do, i corni in fa.

L'improvvisazione consiste nella libera interpolazione dei frammenti notati. Si raccomanda di separare essi frammenti con lunghe pause (da 3" a 9").

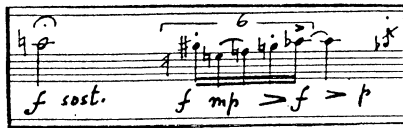
Nel frattempo gli archi ritornano da capo, uno alla volta, e risuonano liberamente, come in una "cadenza", le battute 1-68 - *pppp* e con sordina.

Quando il direttore lo crederà opportuno, indicherà alle trombe e ai corni di passare alla improvvisazione [2] e, più tardi, inviterà il flauto¹ Solo a improvvisare sulle sezioni [1] e [2].

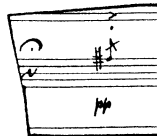
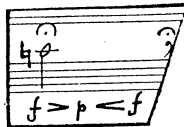
Da questo momento il direttore comincerà a far tacere, uno alla volta, i corni e le trombe, lasciando suonare il flauto 1° Solo con gli archi. Indi - e con diminuendo "a niente" - farà cessare anche gli archi, gruppo per gruppo, lasciando il solo flauto che, con pause sempre più lunghe fra le interpolazioni, terminerà in *pp*.

1

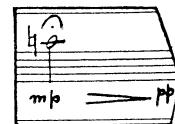
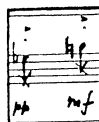
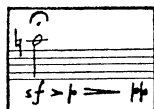
FLAUTO 1° SOLO
CORNI IN FA (OPEN)
TROMBE IN DO (OPEN)



TEMPO GENERALE
DA $\text{♩} = 42$ a $\text{♩} = 84$

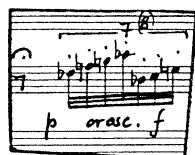


PIÙ TARDI - FLAUTO
1° (COME ECO)

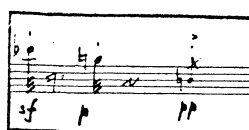
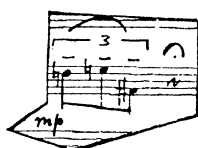
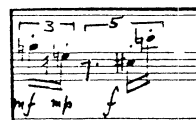
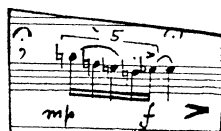


2

FLAUTO 1° SOLO
CORNI IN FA (OPEN)
TROMBE IN DO (OPEN)



TEMPO GENERALE $\text{♩} = 66 - 72$



PIÙ TARDI - FLAUTO 1°
(COME ECO)

