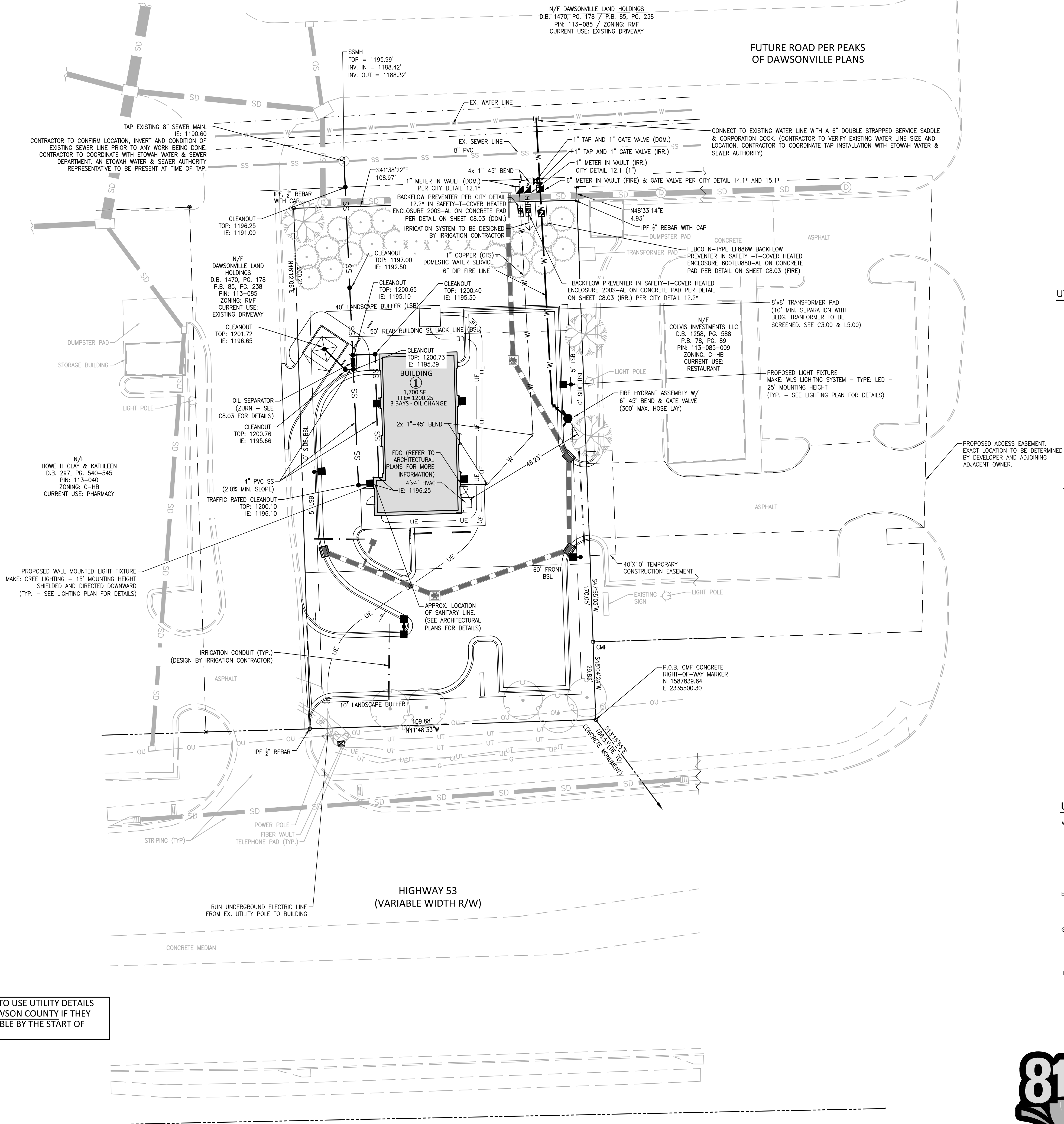


I:\Projects\NTR\NTR21002\04-Production\Engineering\Construction Documents\Current Drawings\NTR21002X-SITE.dwg, 12/15/2021 2:43:39 PM, Lauren McAdams

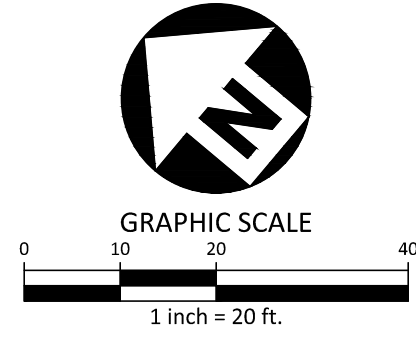


\* CONTRACTOR TO USE UTILITY DETAILS  
CREATED BY DAWSON COUNTY IF THEY  
BECOME AVAILABLE BY THE START OF  
CONSTRUCTION

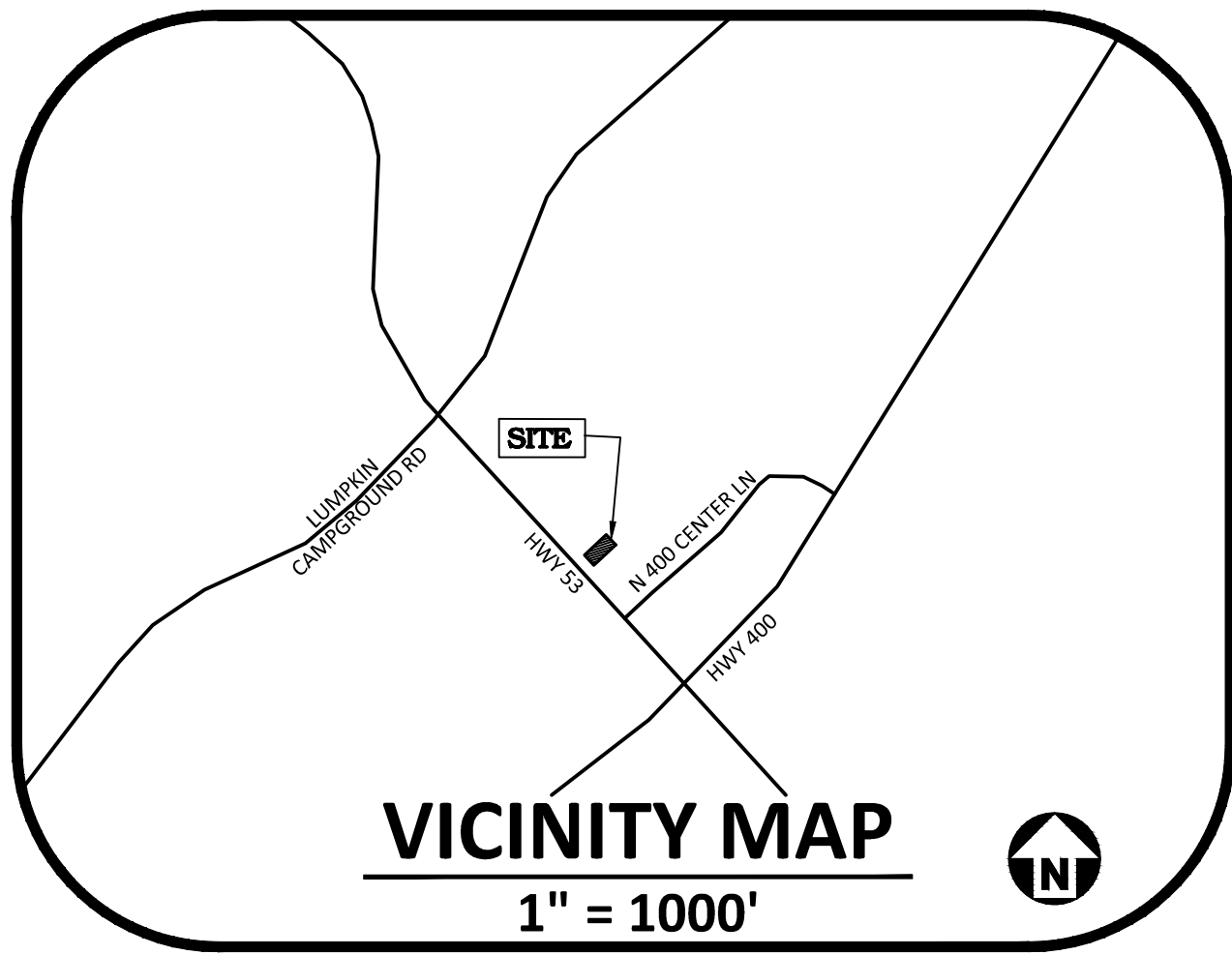


Know what's below.  
Call before you dig.

ALL CONSTRUCTION SHALL BE IN ACCORDANCE  
WITH THE CURRENT DAWSON COUNTY  
ENGINEERING DESIGN AND CONSTRUCTION  
STANDARDS



PRELIMINARY DRAWING - NOT RELEASED FOR CONSTRUCTION



#### UTILITY LEGEND

	FIRE HYDRANT ASSEMBLY		LINE BREAK SYMBOL
	FIRE DEPARTMENT CONNECTION (FDC)		WATERLINE
	WATER METER		WATER SERVICE LINE
	WATER VALVE		UTILITY SLEEVE
	METER & VAULT		SANITARY SEWER
	REDUCER		SEWER SERVICE LINE
	SEWER CLEAN-OUT		SEWER FORCE MAIN
	OIL SEPARATOR		GAS LINE
	SEWER FLOW DIRECTION ARROW		OVERHEAD UTILITY
	POWER POLE		UNDERGROUND ELECTRIC
	BACKFLOW PREVENTER		TELEPHONE
			EASEMENT LINE

#### UTILITY NOTES:

- ALL WATER MAINS, SERVICES AND FIRE SERVICES GREATER THAN 2" DIAMETER ARE TO BE DUCTILE IRON PIPE. 2" & SMALLER DOMESTIC SERVICES MUST BE CTS (WITHOUT FITTINGS) TO THE WATER METER.
- ALL SEWER MAINS SHALL BE EITHER PVC OR DUCTILE IRON PIPE AS SHOWN ON THE PLANS. ALL PIPE MATERIAL SHALL MEET DAWSON COUNTY STANDARDS AND SPECIFICATIONS AS DEFINED IN THE LATEST ISSUE OF THE PUBLIC UTILITIES HANDBOOK AND/OR UNIFIED DEVELOPMENT ORDINANCE (UDO).
- ALL FIRE HYDRANTS ALONG PUBLIC R/W LINES SHALL HAVE A 5'X5' L DAWSON COUNTY WATERLINE EASEMENT ONTO ADJACENT PROPERTY.
- ALL SANITARY SEWER INTERCEPTOR LINES (12" AND LARGER), AS WELL AS MANHOLES AND FITTINGS ASSOCIATED WITH THE INTERCEPTOR LINE, SHALL BE INTERNALLY LINED WITH PROTECTO 401 OR APPROVED EQUAL TO PREVENT HYDROGEN SULFIDE CORROSION. SEE THE CURRENT DAWSON COUNTY PUBLIC UTILITIES DEPARTMENT HANDBOOK FOR APPROVED COATINGS AND APPLICATION METHODS.
- ALL UNDERGROUND UTILITIES INSTALLED SHALL BE ELECTRONICALLY LOCATABLE. CONTRACTOR SHALL COORDINATE DIRECTLY WITH THE DAWSON COUNTY PUBLIC UTILITIES DEPARTMENT FOR DETAILS AND SPECIFICATIONS FOR MEETING THESE REQUIREMENTS.
- EXISTING UTILITIES SHOWN ARE BASED ON FIELD SURVEYS AND THE BEST AVAILABLE RECORD DRAWINGS. THE CONTRACTOR SHALL VERIFY CONDITIONS PRIOR TO BEGINNING CONSTRUCTION. ANY DISCREPANCIES BETWEEN ACTUAL FIELD CONDITIONS AND THE PLANS SHALL BE REPORTED TO THE ENGINEER IMMEDIATELY.
- ALL WATER AND SEWER MAINS WITHIN PUBLIC EASEMENTS OR RIGHTS-OF-WAY TO BE OWNED, OPERATED, AND MAINTAINED BY DAWSON COUNTY.
- ALL WATER AND SEWER MAINS NOT WITHIN PUBLIC EASEMENTS OR RIGHTS-OF-WAY TO BE PRIVATELY OWNED, OPERATED, AND MAINTAINED BY THE PROPERTY OWNER.
- CONTRACTOR MUST CALL THE UTILITIES PROTECTION CENTER "CALL BEFORE YOU DIG" TELEPHONE NUMBER "GA811" OR (1-800-282-7411) AT LEAST 4 FULL BUSINESS DAYS PRIOR TO BEGINNING CONSTRUCTION OR EXCAVATION TO HAVE EXISTING UTILITIES LOCATED. CONTRACTOR SHALL CONTACT ANY LOCAL UTILITIES THAT PROVIDE THEIR OWN LOCATOR SERVICES INDEPENDENT OF "GA811". REPORT ANY DISCREPANCIES TO THE ENGINEER IMMEDIATELY.
- TAPPING SLEEVES FOR EXISTING WATER MAINS SIZED FOUR THROUGH TWELVE INCH (4" THROUGH 12") IN DIAMETER FOR EIGHT INCH (8") AND SMALLER TAPS CAN BE EITHER AN AMERICAN FLOW CONTROL SERIES 2800 OR A FORD STAINLESS STYLE FAST TAPPING SLEEVE. THE STAINLESS STEEL FAST STYLE SHALL ONLY BE USED IN CASES WHERE THE NORMAL WORKING PRESSURE IS LESS THAN 125 PSI AND THE TAP IS EIGHT INCH (8") IN DIAMETER OR SMALLER. WHERE THE NORMAL WORKING PRESSURE EXCEEDS 125 PSI OR THE TAP IS LARGER THAN EIGHT INCH (8") IN DIAMETER, THE SLEEVE SHALL BE AN AMERICAN FLOW CONTROL SERIES 2800. BOTH TYPES OF SLEEVES SHALL HAVE A FLANGED CONNECTION TO THE TAPPING VALVE.
- ALL PLANS FOR DEVELOPMENT MUST MEET ALL APPLICABLE DAWSON COUNTY FIRE PROTECTION ORDINANCE AND CODES.
- THE DEVELOPER SHALL CONTACT ETOWAH WATER AND SEWER AUTHORITY - ENGINEERING & CONSTRUCTION DEPARTMENT AT (706)216-8474 TO ARRANGE THE PRE-CONSTRUCTION MEETING PRIOR TO THE BEGINNING OF ANY WATER AND SEWER CONSTRUCTION.

#### UTILITY CONTACTS:

WATER & SANITARY SEWER  
ETOWAH WATER AND SEWER AUTHORITY  
ADDRESS: 1162 HIGHWAY 53 EAST (P.O. BOX 769) DAWSONVILLE, GA 30534  
PHONE: 706-216-8474 (M-F 8AM-4:30 PM)  
PHONE (EMERGENCIES): 706-265-3395 (24/7)  
CONTACTS: PATTY DAY, CUSTOMER SERVICE MANAGER - PATTYD@ETOWAHWATER.ORG  
- JOHN CRONAN, ENGINEERING & CONSTRUCTION DEP. - JOHNCR@ETOWAHWATER.ORG  
- COLLIN GRANT, MAINTENANCE DEP. - COLING@ETOWAHWATER.ORG  
- KENNETH PEARSON, OPERATIONS DEP. - KENNETH@ETOWAHWATER.ORG

ELECTRIC  
GEORGIA POWER  
PHONE (POWER OUTAGE): 1-888-891-0938 (24/7)  
PHONE (CUSTOMER SERVICE): 1-888-655-5888 (M-F 8AM-6 PM)

GAS  
ATLANTA GAS LIGHT  
PHONE (CUSTOMER SERVICE): 1-800-427-5463 (M-F 7AM-8 PM)  
PHONE (GAS EMERGENCIES): 1-877-427-4321 (24/7)  
CONTACTS: CUSTOMER CARE CENTER - G2AGLCUSTOMERCARE@SOUTHERNCO.COM

TELEPHONE/CABLE/INTERNET  
KINETIC BY WINDSTREAM  
PHONE: 1-888-660-1601

**McADAMS**  
The John R. McAdams Company, Inc.  
2905 Meridian Parkway  
Durham, NC 27713  
phone 919. 361. 5000  
fax 919. 361. 2269  
GA license number: PEF007872

www.mcadamsco.com

#### CLIENT

N3 REAL ESTATE  
1240 N KIMBALL AVE  
SOUTHLAKE, TX  
PHONE: 817.348.8748



**STRICKLAND BROTHERS OIL  
CHANGE - DAWSONVILLE**  
SITE PLAN SUBMITTAL  
HIGHWAY 53, NORTHWEST OF ITS  
INTERSECTION WITH CENTER LANE  
DAWSONVILLE, GA 30534



#### REVISIONS

NO.	DATE	DESCRIPTION
1	-	-
2	-	-
3	-	-
4	-	-
5	-	-
6	-	-

#### PLAN INFORMATION

PROJECT NO. NTR21002  
FILENAME NTR21002X-SITE  
CHECKED BY LAM  
DRAWN BY AP  
SCALE 1" = 20'  
DATE 12.15.2021

#### SHEET

UTILITY PLAN

**C4.00**