

8/02

2
3

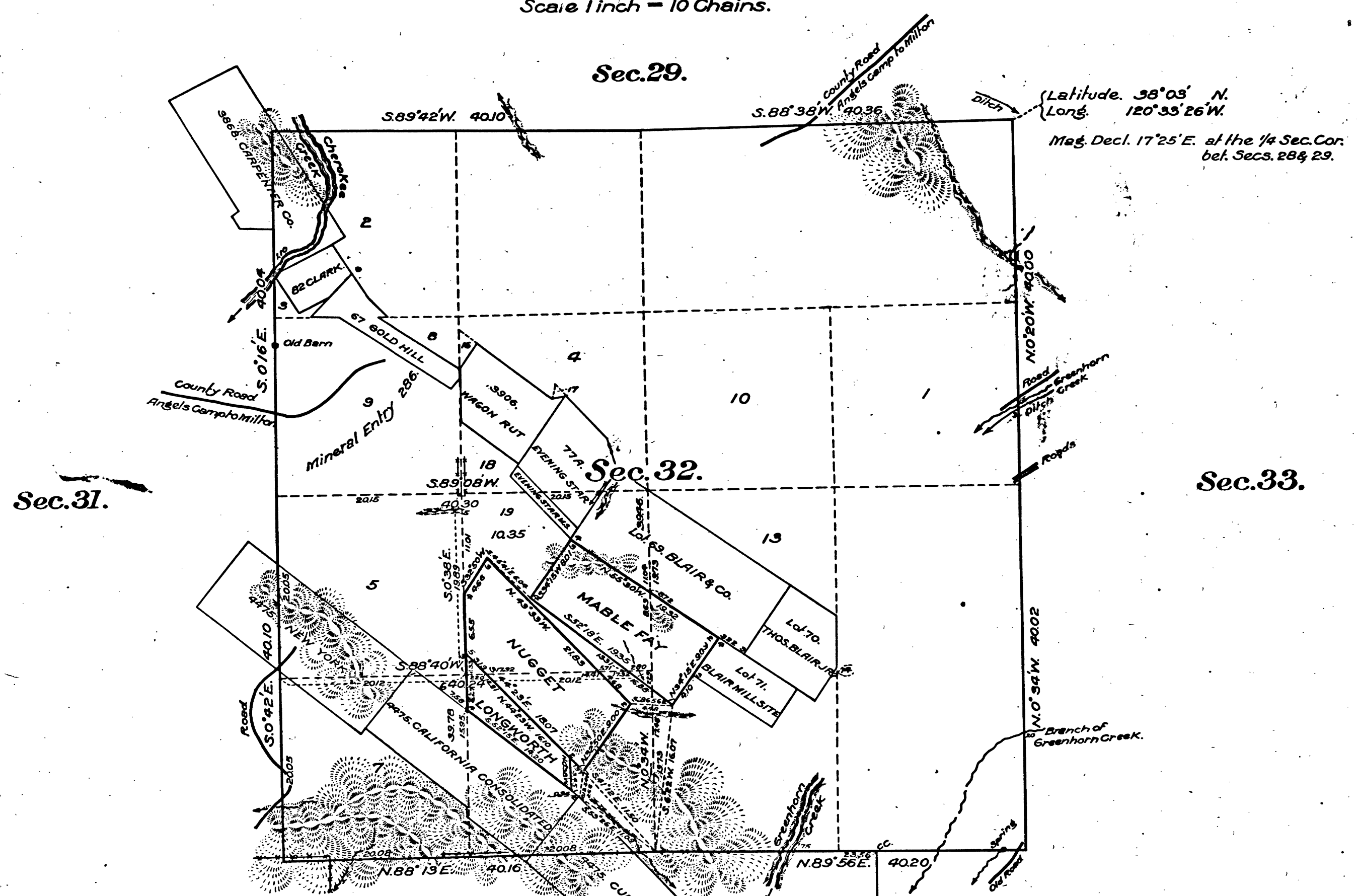
MAP

showing the Segregation of the
Mable Fay, Nugget and Longworth Lodes
from the N.E. 1/4 S.W. 1/4 of Sec. 32, T. 3 N., R. 13 E., M.D.M.

California.

Scale 1 inch = 10 Chains.

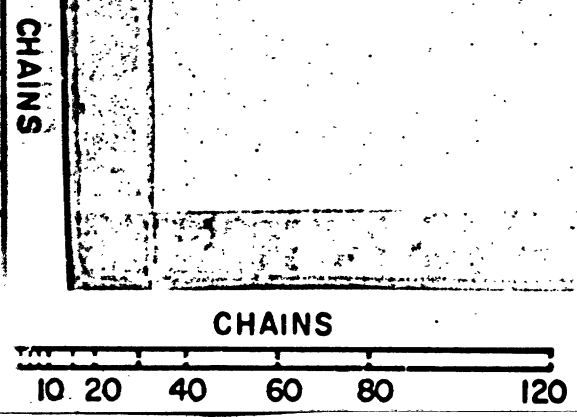
Survey Accepted June 9, 1917.
G. L. O.



The above map, showing the segregation of the Mable Fay, Nugget and Longworth Lodes, from the N.E. 1/4 S.W. 1/4 of Sec. 32 T. 3 N., R. 13 E., M.D.M. California, as surveyed by J. H. Finley, U.S. Mineral Surveyor, April 15 to April 28, 1916, under Special Instructions dated December 11, 1915, to accommodate H.E. 02576 of Frank P. Reister, is strictly conformable to the field notes of the survey thereof on file in this Office, which have been examined and approved.
U.S. Surveyor General's Office.
San Francisco, California.
November 21, 1916.

Frank M. Howard
U.S. Surveyor General
For California.

41 229



June 9 1917
J. 10 7

T3N R13E MDM

BLM 96