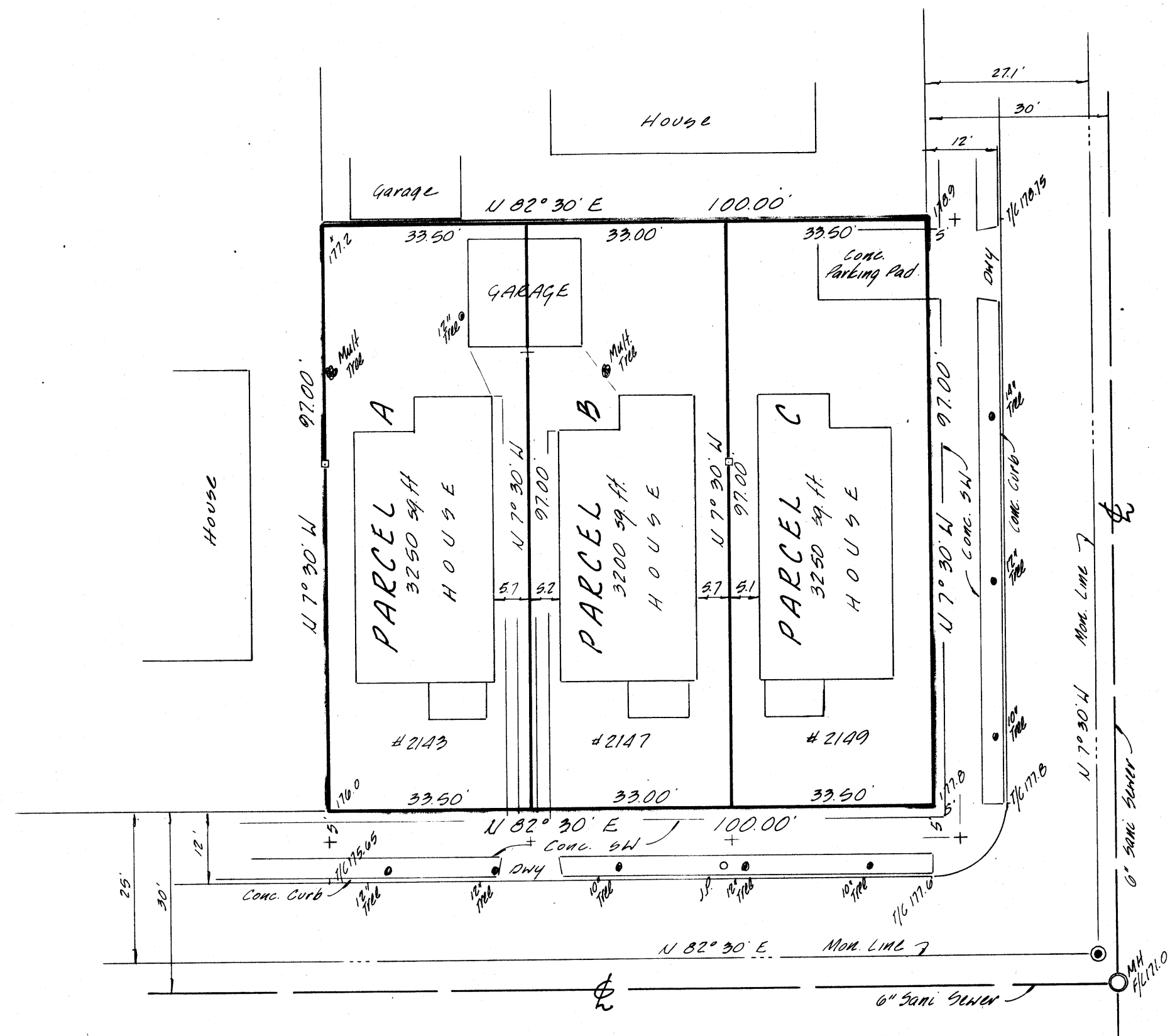


PARCEL MAP



BLAKE STREET 60'

FULTON STREET 60'

BASIS OF BEARINGS

Assumed bearing of N 82° 30' E for Blake Street based on previous surveys.

Elevations are based on City of Berkeley Datum

LEGEND

- City Monument
- + Cross cut in conc.
- Hole cut w/ tag RCE 6244

This map was prepared by me or under my direction and is based upon a field survey in conformance with the requirements of the Subdivision Map Act at the request of Martin and Victor Segal in January 1974. I hereby certify that it conforms to the approved tentative map and the conditions of approval thereof, that all provisions of applicable State law and local ordinances have been complied with.



Clarence W. Bates
C. Woodrow Bates R.C.E. No. 6244

This map has been examined this 4th day of November 1974, for conformance with the requirements of Section 11575 of the Subdivision Map Act.

Kay E. Cohen
City Engineer, R.C.E. No. 8596

This map has been approved by the Planning Commission, City of Berkeley at its meeting of April 17, 1974, and when recorded this map becomes the official map of this land division.

Secretary, Planning Commission

RECORDER'S CERTIFICATE

Filed this 7th day of November 1974 at 2:52 P.M., in Book 84 of Parcel Maps at Page 70 at the request of C. Woodrow Bates

85
74-143264

JACE G. BLUE
County Recorder

Susan Cooper
Deputy County Recorder

LOTS 22 AND 23, STEELE TRACT
BERKELEY, ALAMEDA COUNTY

320 330 CALIFORNIA

OWNER & SUBDIVIDER: MARTIN & VICTOR SEGAL
610 JEAN ST. OAKLAND
DEED REC. DATA: REEL 3437, 1M 309

SURVEYOR: BATES & BAILEY CIVIL ENGRS. & SURVEYORS
15 SHATTUCK SQ. BERKELEY

SCALE: 1"=20'

DATE: FEBRUARY 1974

PM 1370

2-J-10

ASSESSOR'S BOOK PAGE

SHEET 1 OF 1

FILED 11-7-74
MAR 1974 Pa 70 84/70