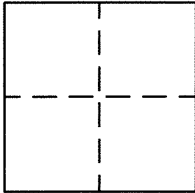


CORNER RECORD

AGENCY INDEX BK 120 PG 88DOCUMENT NUMBER CR12512CITY OF OAKLAND COUNTY OF ALAMEDA, CALIFORNIABRIEF LEGAL DESCRIPTION CITY MONUMENT AT INTERSECTION EDGEWATER DRIVE\OAKPORT STREET**CORNER TYPE****COORDINATES(OPTIONAL)**GOVERNMENT CORNER ☐ CONTROL ☒MEANDER ☐ PROPERTY ☐RANCHO ☐ OTHER ☐DATE OF SURVEY JULY 17, 2018N. NA E. NAELEVATION NAUNITS METRIC ☐ U.S. SURVEY FOOT ☒HORIZONTAL DATUM NAZONE NAVERTICAL DATUM NA EPOCH DATE NA☐ COMPLIES WITH PUBLIC RESOURCES CODE §§ 8801-8819☐ COMPLIES WITH PUBLIC RESOURCES CODE §§ 8890-8902PLS ACT REF.: ☐ 8765(d) ☒ 8771 ☐ 8773 ☐ OTHER:CORNER/ ☒ LEFT AS FOUND ☐ ESTABLISHED ☐ REBUILT ☒ PRE-CONSTRUCTIONMONUMENT: ☐ FOUND AND TAGGED ☐ REESTABLISHED ☒ REFERENCED ☐ POST-CONSTRUCTIONNARRATIVE OF CORNER IDENTIFIED AND MONUMENT AS FOUND, SET, RESET, REPLACED, OR MOVED:
FOUND MONUMENT AT THE INTERSECTION OF EDGEWATER DRIVE AND OAKPORT STREET.MONUMENTS SHOWN HEREON ARE TIED FOR PURPOSES TO PRESERVE THEIR LOCATION PRIOR TO
REPAVEMENT. NO ATTEMPT WAS MADE TO DETERMINE THE RELATIONSHIP TO PROPERTY,
CENTERLINE, OR RIGHT OF WAY LINES.**SURVEYOR'S STATEMENT**

THIS CORNER RECORD WAS PREPARED BY ME OR UNDER MY DIRECTION

UNDER CONFORMANCE WITH THE PROFESSIONAL LAND SURVEYOR'S

ACT ON 3/11/19SIGNED [Signature] P.L.S. OR R.C.E. NO. 9177**COUNTY SURVEYOR'S STATEMENT**THIS CORNER RECORD WAS RECEIVED 10 DECEMBER 2018AND EXAMINED AND FILED 16 MAY 2019SIGNED [Signature] P.L.S. OR R.C.E. 6843TITLE COUNTY SURVEYOR

COUNTY SURVEYOR'S COMMENT



LEGEND

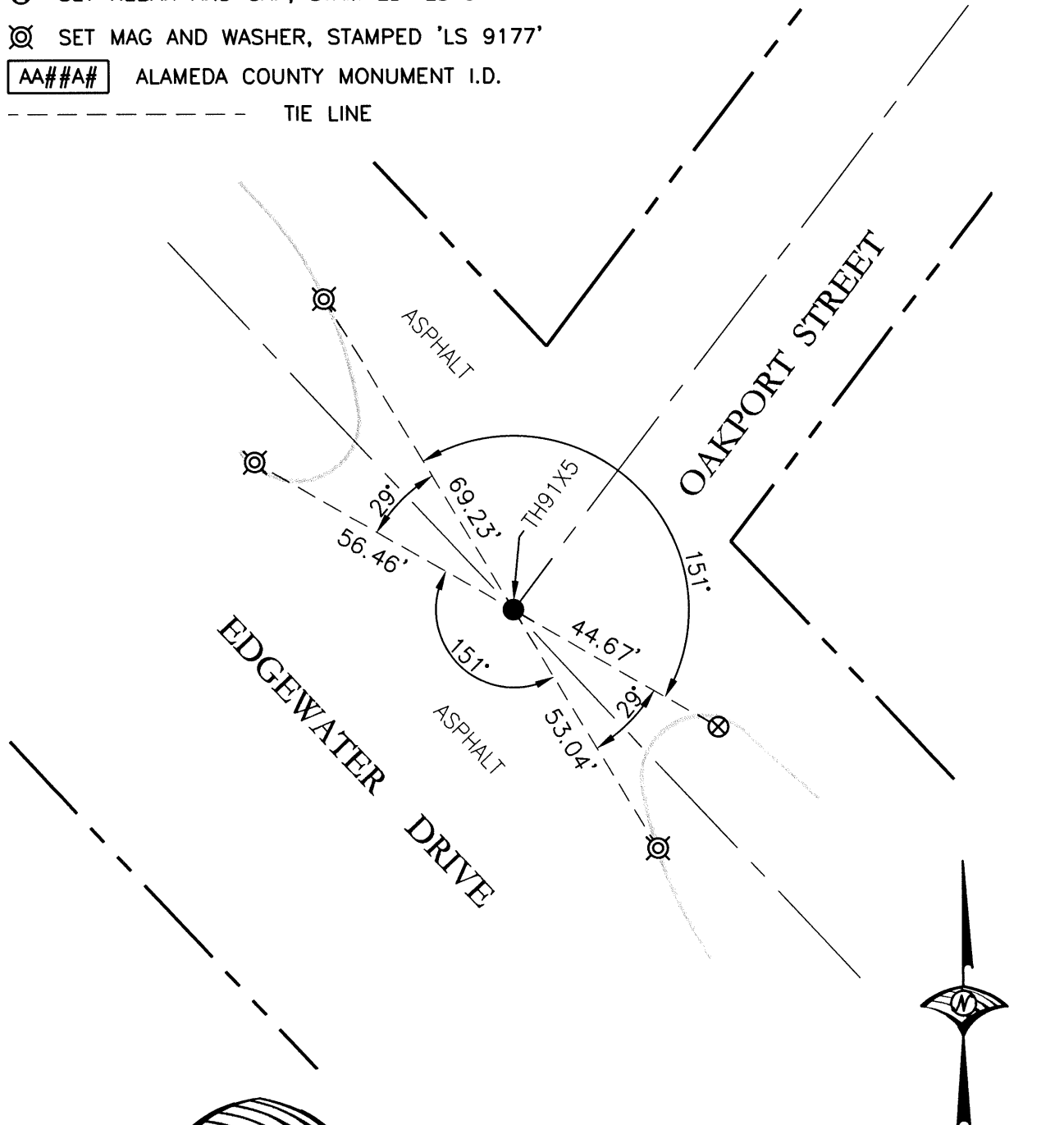
● FOUND CITY MONUMENT, IN ASPHALT, PER CITY MONUMENT RECORD SHEET 39

⊗ SET REBAR AND CAP, STAMPED 'LS 9177'

⊗ SET MAG AND WASHER, STAMPED 'LS 9177'

AA##A# ALAMEDA COUNTY MONUMENT I.D.

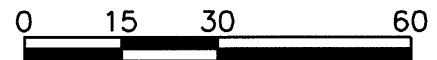
----- TIE LINE



WOOD RODGERS
BUILDING RELATIONSHIPS ONE PROJECT AT A TIME

4670 WILLOW ROAD, STE. 125 TEL 925.847.1556
PLEASANTON, CA 94588 FAX 925.847.1557

JOB#8530.014 CITY OF OAKLAND CITY-WIDE SURVEY



SCALE: 1" = 30'