



PANDA EXPRESS, INC.
1683 Walnut Grove Ave.
Rosemead, California
91770
Telephone: 626.799.9898
Facsimile: 626.372.8288

All ideas, designs, arrangement and plans indicated or represented by this drawing are the property of Panda Express Inc. and were created for use on this specific project. None of these ideas, designs, arrangements or plans may be used by or disclosed to any person, firm, or corporation without the written permission of Panda Express Inc.

REVISIONS:		
Δ	SOLUTION F.2	09.30.21
Δ	OWNER REVISIONS	01-27-22

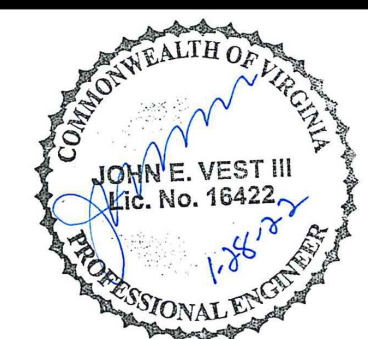
ISSUE DATE:		
	ISSUE FOR PERMIT	01-29-21
	ISSUE FOR BID	04-30-21
	ISSUE FOR BID 2	11-02-21
	ISSUE FOR BID (DT)	02-04-22

DRAWN BY: AE

PANDA PROJECT #: D8164
PANDA STORE #: -
ARCH PROJECT #: 261-321



MPW ENGINEERING, LLC
110 W. 7TH STREET • SUITE 600 • TULSA, OK 74109
(918) 583-4008 • (918) 583-4007 FAX



PANDA EXPRESS
TRUE WARM & WELCOME
JEFFERSON AVE. & MORRIS DR.
NEWPORT NEWS, VA 23605

E-101
LIGHTING FLOOR PLAN

TRUE WARM & WELCOME 2300 R6

- SWITCHBANK 'A'. REFER TO SCHEDULE 4/E-101.
- ROUTE HOMERUN THROUGH LIGHTING SWITCHBANK 'A' (SWITCHES AS NOTED IN LOWER CASE). REFER TO SCHEDULE 4/E-101 FOR MORE INFORMATION.
- ROUTE THROUGH CONTACTS IN HOOD CONTROL PANEL 'M4' FOR CIRCUIT POWER. REFER TO 3/E-401.
- PROVIDE SEPARATE UNSWITCHED HOT CONDUCTOR (SAME CIRCUIT, NOT CONTROLLED BY SWITCH IN SWITCHBANK) TO LOCALLY SWITCHED FIXTURES AND EMERGENCY FIXTURE BATTERY TRIGGER LEADS.
- DUPLEX RECEPTACLE FOR LED ROPE. INSTALL ABOVE CEILING AT +128". REFER TO 8&9/A-402 FOR MORE INFORMATION.
- WALK-IN COOLER LIGHT FIXTURES AND PILOT LIGHT SWITCH PROVIDED WITH COOLER INSTALLED BY E.C. REFER TO 'COOLER EVAPORATOR COIL' WIRING DIAGRAM, 8/E-400.
- WALK-IN FREEZER LIGHT FIXTURE AND PILOT LIGHT SWITCH PROVIDED WITH FREEZER INSTALLED BY E.C. REFER TO 'FREEZER LTG AND DOOR HEATER WIRING DIAGRAM', 10/E-400.
- NOT USED.
- FIXTURES IN THIS ROOM SHALL BE LOCALLY SWITCHED.
- LIGHTING INVERTER FOR EMERGENCY LIGHTING TO BE MOUNTED TO BULKHEAD. RE: 9/E200.
- LED TRANSFORMER FOR LED ROPE LIGHTING LOCATION, MOUNT ABOVE CEILING.
- DUPLEX RECEPTACLE FOR LED ROPE. INSTALL ABOVE CEILING AT +150"
- PROVIDE JUNCTION BOX ABOVE CEILING FOR THE BZ-150 UNIVERSAL POWER PACK REQUIRED FOR EXTERIOR MOTION CONTROL LED FIXTURES. PROVIDE LOW VOLTAGE CONNECTIONS AS REQUIRED TO LIGHTSAVER LS-102 SWITCHING PHOTOSENSOR SO THAT WHEN STORE OPERATIONS ARE OFF THIS EXTERIOR SECURITY LIGHT IS ACTIVATED BY EXTERIOR MOTION ONLY. VERIFY WITH MANUFACTURER'S RECOMMENDATIONS FOR WIRING DIAGRAM. VERIFY LOCATIONS WITH OWNER PRIOR TO INSTALLATION.
- PROVIDE WALL MOUNTED JUNCTION BOX AT +142" FOR INSTALLATION. INSTALL LIGHTSAVER LS-102 SWITCHING PHOTOSENSOR FOR EXTERIOR MOTION CONTROL SECURITY FIXTURES TYP OF 2 LOCATIONS. CONTROL TIMES OF CONTROL SO THAT WHEN STORE OPERATIONS ARE OFF INTERIOR LIGHTS GO OFF AND THE EXTERIOR MOTION LIGHTS ARE ACTIVATED WITH ANY MOTION DETECTED AFTER STORE HOURS. VERIFY WITH MANUFACTURER'S RECOMMENDATIONS FOR WIRING DIAGRAM. VERIFY LOCATIONS WITH OWNER PRIOR TO INSTALLATION.
- ROUTE HOMERUN THROUGH LIGHTING SWITCHBANK 'A' (SWITCH AS NOTED IN LOWER CASE). REFER TO SCHEDULE, SHEET 4/E-101, FOR MORE INFORMATION.
- CONNECT TO VEGETABLE DISPLAY LIGHTING PROVIDED WITH WALK-IN COOLER.
- PROVIDE SEALS AND EXPANSION COUPLINGS ON ALL CONDUITS ENTERING OR LEAVING AREA OF TEMPERATURE DIFFERENCE. REFER TO WIRING NOTES 6/E-400 FOR ADDITIONAL INFORMATION.

- CONTRACTOR SHALL PROVIDE ALL REQUIRED HARDWARES, BRACKETS, ETC. FOR A COMPLETE LIGHTING FIXTURE INSTALLATION.
- FIXTURES THAT ARE TO BE ROUTED VIA TIMECLOCKS ARE SHOWN ON DETAIL 11/E400. SEQUENCE OF OPERATION: TIMECLOCKS WIRED FIRST FOR DESIGNATED CONTROL. SWITCHES ARE SERIES WIRED WITH THE CONTACTORS. UTILIZE DIGITAL OVERRIDE TIMER SWITCH (DOTS) TO OVER-RIDE THE TIMECLOCKS FOR CLEANING AND AFTER HOURS AS NEEDED. SEE DETAIL 11/E400
- ALL LIGHTING FIXTURES SHALL BE SUPPORTED PER N.E.C. 410-16(C). SEE DETAIL, 4/E400.
- CONTRACTOR SHALL INSTALL ALL LIGHTING FIXTURES INCLUDING OWNER-FURNISHED FIXTURES.
- ALL FIXTURE BALLASTS SHALL BE U.L. LISTED.
- E.C. SHALL INSTALL OWNER SUPPLIED LED STRIP LIGHTING & CUT TO PROPER LENGTH. COORDINATE WITH OWNER FOR EXACT LENGTHS AND FINAL LOCATIONS.
- WHEN WORKING IN JURISDICTIONS WHICH HAVE ADOPTED THE 2008 NEC OR LATER, ALL MULTI-WIRE BRANCH CIRCUITS TO HAVE SEPARATE NEUTRALS TO MEET THE REQUIREMENTS OF 2008 NEC 210.4(B).
- ALL CIRCUITRY SHOWN WITHOUT TICKS SHALL HAVE (2) WIRES PLUS EQUIPMENT GROUNDING CONDUCTOR.
- 'N.L.' DESIGNATION INDICATES NIGHT LIGHT ON UNSWITCHED CIRCUIT.

LIGHTING GENERAL NOTES	2	#	LIGHTING KEYED NOTES	3
	NOT TO SCALE	E-101	NOT TO SCALE	E-101

NOTE:
FIXTURES TO BE ROUTED VIA TIME TIMECLOCKS ARE SHOWN ON DETAIL 11/E400.

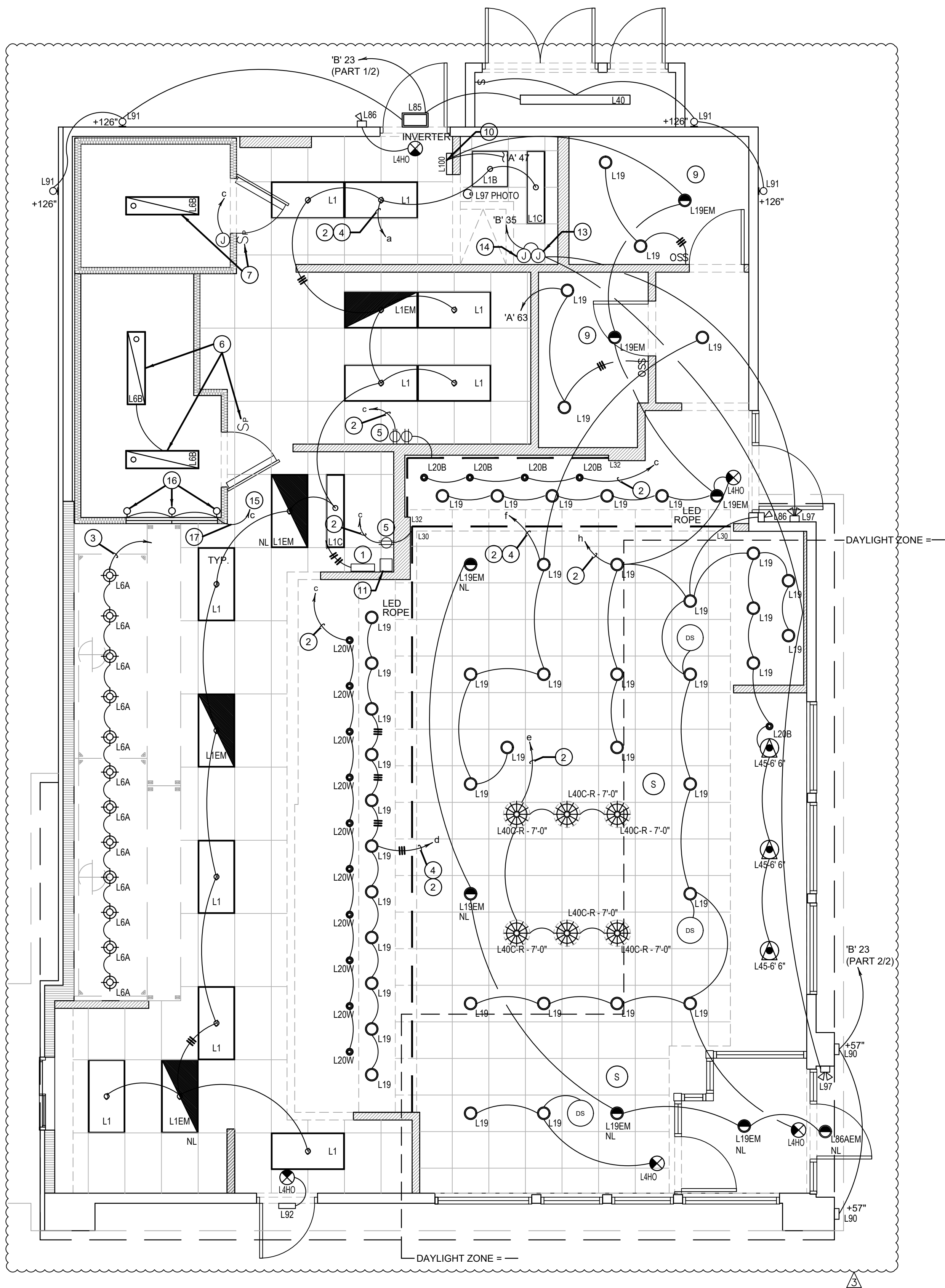
NOTE:
CONTRACTOR TO INSTALL (2) 5 GANG SWITCH BOXES AS SHOWN BELOW. DO NOT INSTALL SEPERATE/INDIVIDUAL BOXES FOR EACH SWITCH

(a)	(b)	(c)	(d)	(e)
\$	\$	\$	\$	\$
BACK OF HOUSE LTG & EX. FAN & RECIRC PUMP	SHOW WINDOW RECEPS	WALK-IN, MENU LED ACCENTS	SERVING LINE SOFFIT	DINING PENDANTS
(f)	(g)	(h)	(i)	(j)
\$	\$	\$	\$	[60:00]
INTERIOR DINING	BEV. COUNTER	DAYLIGHT HARVEST	SPARE	INTERIOR LIGHTING SHUT DOWN OVERRIDE

SWITCHBANK SCHEDULE 'A'				
TAG	SWITCH TYPE	AREA SERVED / SWITCH LABEL	CIRCUIT	LOAD
a	TOGGLE SWITCH	BACK-OF-HOUSE / RR FANS	'A' 45	530 VA
b	TOGGLE SWITCH	SHOW WINDOW RECEP	'A' 49	720 VA
c	TOGGLE SWITCH	WALK-INS, MENU, LED ACCENTS	'A' 1	275 VA
d	TOGGLE SWITCH	SERVING LINE SOFFIT	'A' 45	140 VA
e	TOGGLE SWITCH	DINING PENDANTS	'A' 47	24 VA
f	TOGGLE SWITCH	INTERIOR DINING	'A' 47	118 VA
g	TOGGLE SWITCH	BEVERAGE COUNTER	'A' 47	16 VA
h	TOGGLE SWITCH	DAYLIGHT HARVESTING ZONE	'A' 47	219 VA
i	SPARE			
j	COUNTDOWN TIMER	INTERIOR LIGHTING	'A' 47	118 VA

INTERIOR / EXTERIOR LTG CONTACTORS SCHEDULE 4

NOT TO SCALE E-101



LIGHTING FLOOR PLAN 1

Scale: 1/4"=1'-0" E-101

ISSUE FOR PERMIT 11-02-21