

CORNER RECORD

Agency Index

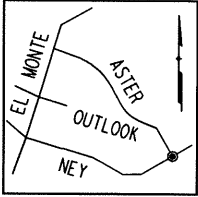
BOOK 107 PAGE 35

Document Number

CR 11075

City of OAKLANDCounty of ALAMEDA, California

Brief Legal Description

CITY OF OAKLAND (C.O.O.) MONUMENT 21SW26 AS SHOWN UPON MONUMENT MAP 1521B462_93
AND TRACT 1754 (37-MAPS-62) NEAR THE INTERSECTION OF ASTER AVENUE AND NEY AVENUE.

CORNER TYPE

Government Corner ☐ Control
Meander ☐ Property
Rancho ☐ Other

COORDINATES (Optional)

N. 2104304.6 ± E. 6082578.3 ±☒ Elevation 252.572' (C.O.O. DATUM)☐ Units Metric ☐ U.S. Survey Foot ☒☐ Horizontal Datum CCS 83Zone 3 Epoch Date _____

Vertical Datum _____

Date of Survey 3/1/2018☐ Complies with Public Resources Code §§8801-8819☐ Complies with Public Resources Code §§8890-8902PLS Act Ref: ☐ 8765(d)☒ 8771☐ 8773☐ Other:Corner/
Monument: ☒ Left as found☐ Established☐ Rebuilt☒ Pre-Construction☐ Found and tagged☐ Reestablished☒ Referenced☐ Post-Construction

Narrative of corner identified and monument as found, set, reset, replaced, or removed:

☒ See sheet #2 for description (s):

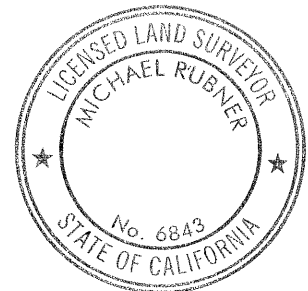
FOUND MONUMENT THAT COULD BE DAMAGED OR DESTROYED BY A PROPOSED GAS LINE CONSTRUCTION PROJECT. MONUMENT WAS REFERENCED AS SHOWN ON PAGE 2 OF 2.

THE PURPOSE OF THIS CORNER RECORD IS TO PRESERVE THE LOCATION OF THE MONUMENT PRIOR TO CONSTRUCTION. NO ATTEMPT WAS MADE TO DETERMINE THE RELATIONSHIP BETWEEN THE MONUMENT AND PROPERTY LINES, RIGHT-OF-WAY LINES, CENTERLINES OR OTHER MONUMENTS.

SURVEYOR'S STATEMENT

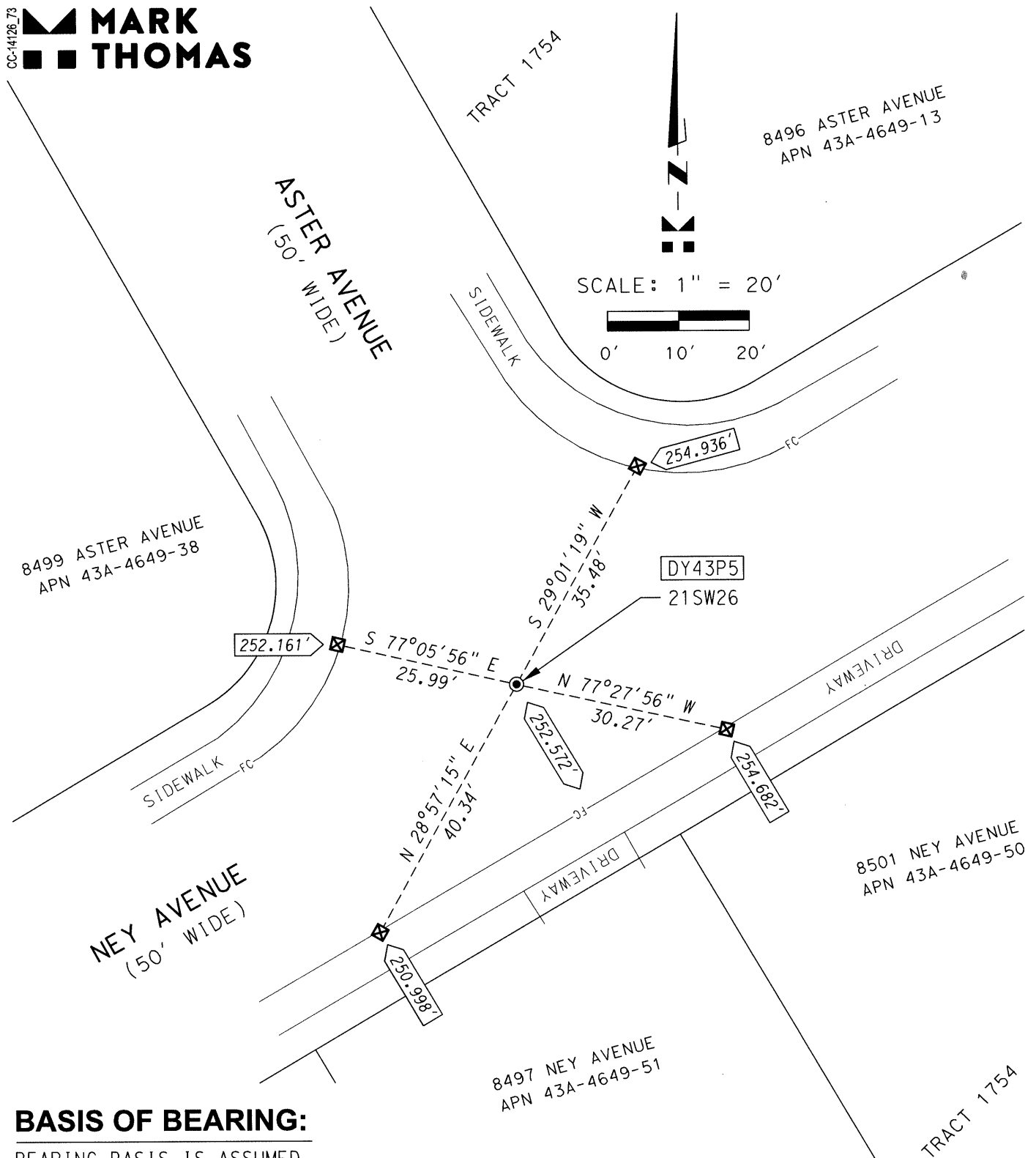
This Corner Record was prepared by me or under my direction in conformance with
the Professional Land Surveyors' Act on APRIL 23, 2018Signed [Signature] P.L.S. or R.C.E. No. 8911

COUNTY SURVEYOR'S STATEMENT

This Corner Record was received 6 MARCH 2018and examined and filed 27 APRIL 2018Signed [Signature] P.L.S. or R.C.E. No. 6843Title COUNTY SURVEYOR

County Surveyor's Comment _____

CC-14126_73


**MARK
THOMAS**
**BASIS OF BEARING:**

BEARING BASIS IS ASSUMED

LEGEND:

FOUND CONCRETE MONUMENT WITH 1/4" PIN IN WELL



SET CUT CROSS FOR REFERENCE POINT IN TOP OF CONCRETE CURB

252.572'

MONUMENT ELEVATION (CITY OF OAKLAND DATUM)

xxx.xxx'

REFERENCE POINT ELEVATION (ESTABLISHED USING A DIGITAL LEVEL)

DY43P5

ALAMEDA COUNTY MONUMENT IDENTIFICATION NUMBER