

Vol. 7- Pg. 48

SCALE 1"= 100'

RECORD OF SURVEY 36-2

ONE SHEET ONLY
No. 851

Filed this 20th day of August, 1971, at 9:40 A.M.
in Book 7 of Maps at Page 48
at the request of Gordon C. Holmes.

IN THE UNINCORPORATED TERRITORY OF
THE COUNTY OF MONO, STATE OF CALIFORNIA,
BEING A RESURVEY OF PORTIONS OF BLOCKS
2, 3, AND 3A OF MAMMOTH CAMP TRACT 2 PER
M.B. 1-5, RECORDS OF MONO COUNTY.

Ann M. Stebb
County Recorder

This map correctly represents a survey made by me
or under my direction in conformance with the require-
ments of the Land Surveyor's Act at the request of the
St. Vincent's Seminary in July, 1971.

Gordon C. Holmes
Gordon C. Holmes RCE 10467

This map has been examined for conformance
with the requirements of the Land Surveyor's
Act this 20th day of August, 1971.

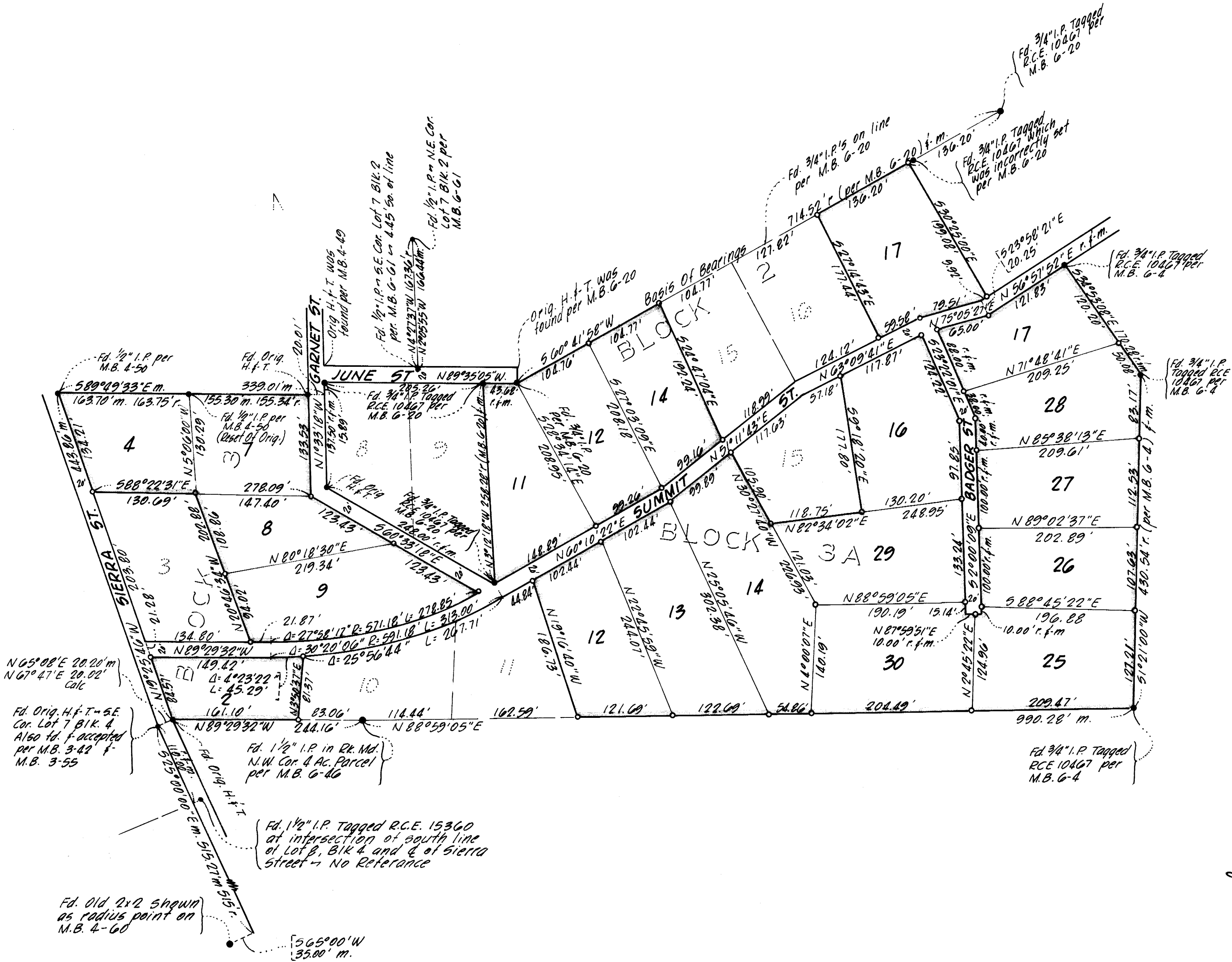
Richard L. Gode, P.E.
County Surveyor

SURVEY NOTE:

The south line of Lots 7 & 8 of Block 2 of Mammoth Camp
Tract No. 2 as established by R.C.E. 9045 (R.C. Downer) is
in conflict with the north line of June Street as shown
hereon. The north line of June Street is well established by
monuments which were set in conformance with original H.F.T.'s
found on said north line per M.B. 4-49 and M.B. 6-20 and it
appears that M.B. 6-61 is in error.

- indicates a found point as noted.
- indicates a 2x2 H.F.T. set unless otherwise noted.

r= record
m= measured
Note: Unless otherwise noted distances and
bearings shown hereon were proportioned from
record.



RS# 36-2

Vol. 7- Pg. 48