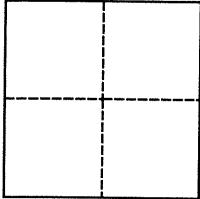


CORNER RECORD

Agency Index Bk 123 Pg 25Document Number CR 12707City of Oakland (APN 29A-1328-21-1) County of Alameda, CaliforniaBrief Legal Description Monument near 1500 Leimert Boulevard**CORNER TYPE****COORDINATES (Optional)**Government Corner ☐ Control ☒
Meander ☐ Property ☐
Rancho ☐ Other ☐

N. _____ E. _____

Elevation _____

Units Metric ☐ U.S. Survey Foot ☐

Horizontal Datum _____

Zone _____ Epoch Date _____

Date of Survey December 11, 2018

Vertical Datum _____

☐ Complies with Public Resources Code §§8801-8819☐ Complies with Public Resources Code §§8890-8902PLS Act Ref.: ☐ 8765(d) ☒ 8771 ☐ 8773 ☐ Other:Corner/
Monument: ☒ Left as found ☐ Established ☐ Rebuilt ☐ Pre-Construction
☐ Found and tagged ☐ Reestablished ☐ Referenced ☒ Post-Construction

Narrative of corner identified and monument as found, set, reset, replaced, or removed:

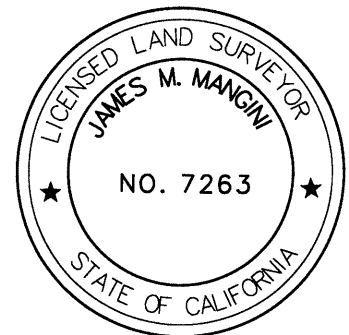
☒ See sheet #2 for description(s):

City monument was referenced prior to pipeline construction per CR 9649 (94 CR 28). Monument was checked on 12/11/18 by an EBMUD survey crew, and found undisturbed and in good condition. See sheet 2.

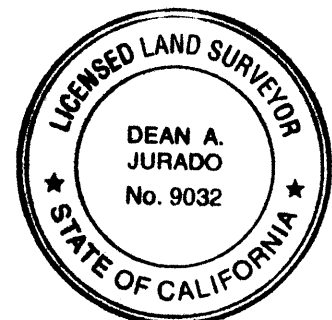
Reference EBMUD Field Book 4565, Page 72 (Clarke/Baumann)

SURVEYOR'S STATEMENT

This Corner Record was prepared by me or under my direction in conformance with

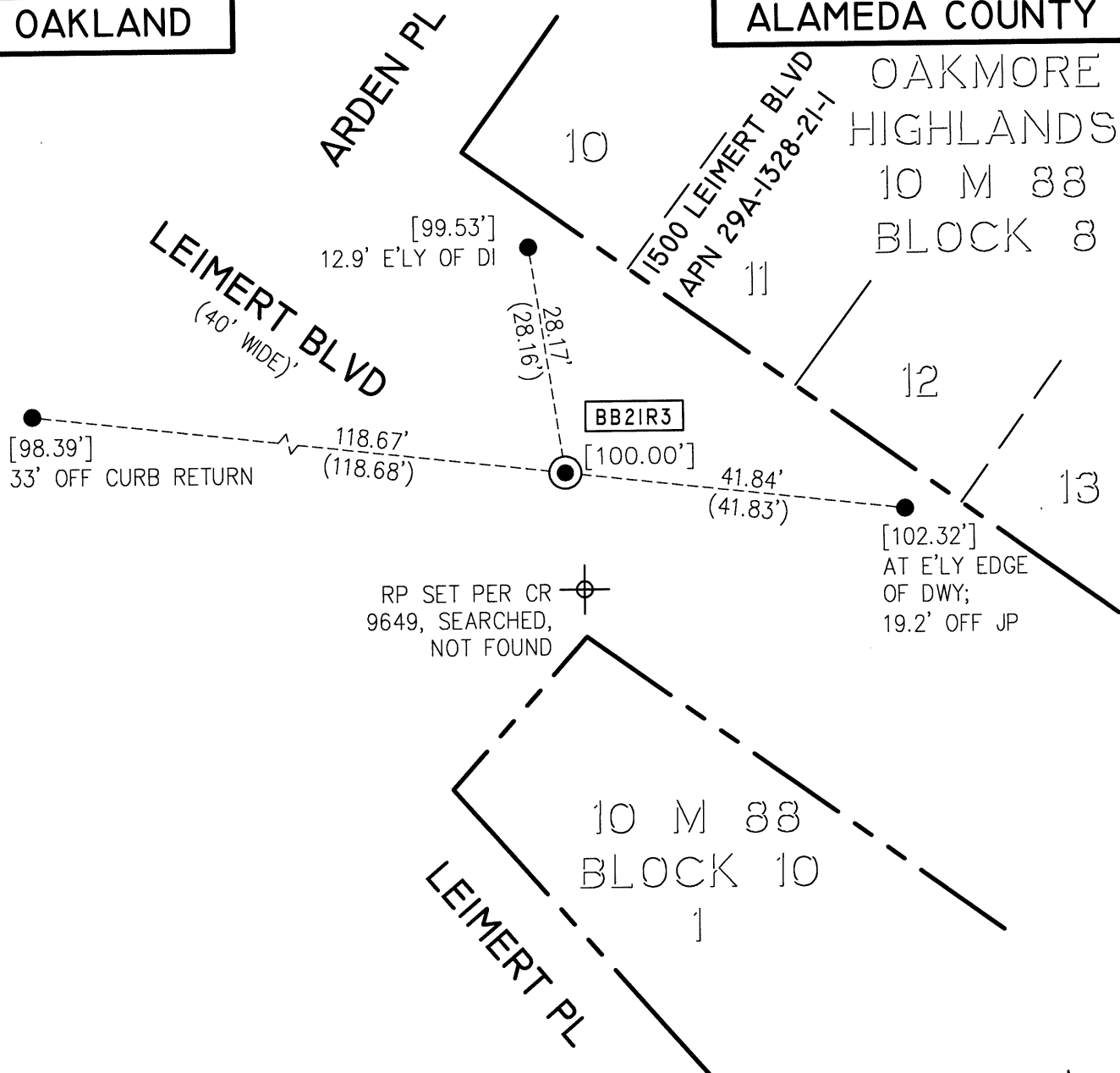
the Professional Land Surveyors' Act on FEBRUARY 5, 2019.Signed James M. Mangin P.L.S. or R.C.E. No. 7263**COUNTY SURVEYOR'S STATEMENT**This Corner Record was received August 13, 2019and examined and filed September 12, 2019.Signed [Signature] P.L.S. or R.C.E. No. 6842 9032Title County Surveyor (INTERIM)

County Surveyor's Comment



OAKLAND

ALAMEDA COUNTY

**LEGEND**

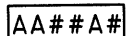
FOUND 3/8" NAIL W/ PUNCH, IN CONCRETE POST, 0.8' DOWN, UNDER STANDARD MONUMENT CASING, PER CR 9649



FOUND CONCRETE ANCHOR NAIL WITH 1-1/2" ALUMINUM WASHER, STAMPED "EBMUD MON RP", PER CR 9649



ASSUMED ELEVATION (MEASURED USING A LEICA DNA10 DIGITAL LEVEL), PER CR 9649



ALAMEDA COUNTY MONUMENT I.D.

(##.##') RP DISTANCE PER CR 9649

ADDRESS: 1500 LEIMERT BLVD

APN: 29A-1328-21-1



SCALE
1"=20'

