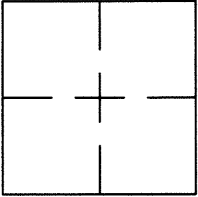


**CORNER RECORD**Document Number CR 9836City of OAKLANDCounty of ALAMEDA, CaliforniaBrief Legal Description BRASS DISC MONUMENT LOCATED WITHIN THE INTERSECTION OF  
FRUITVALE AVENUE AND SCHOOL STREET.**CORNER RECORD**

Government Corner ☐ Control ☒  
 Meander ☐ Property ☐  
 Rancho ☐ Other ☐  
 Date of Survey 2/13/17

**COORDINATES**  
(Optional)

N. \_\_\_\_\_  
 E. \_\_\_\_\_  
 Zone \_\_\_\_\_ Datum \_\_\_\_\_  
 Elev. \_\_\_\_\_

**Corner** — Left as found ☒ Found and tagged ☐ Established ☐ Reestablished ☐ Rebuilt ☐

Identification and type of corner found: Evidence used to identify or procedure used to establish or reestablish the corner:  
FOUND BRASS DISC WITH PUNCH IN MONUMENT WELL LOCATED WITHIN THE INTERSECTION OF  
FRUITVALE AVENUE AND SCHOOL STREET.

THIS POINT WAS REFERENCED PRIOR TO A CONSTRUCTION PROJECT IN THE VICINITY.

A description of the physical condition of the monument as found and as set or reset: \_\_\_\_\_  
FOUND AND SET POINTS AS SHOWN ON PAGE 2.

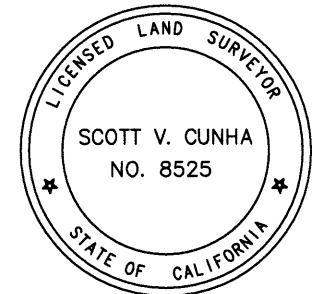
THE TIES SHOWN HEREON ARE FOR THE PURPOSE OF PERPETUATING FOUND MONUMENTATION.

NO CLAIM IS MADE AS TO THE RELATIONSHIP OF THE POINTS OR LINES SHOWN HEREON TO  
TRUE BOUNDARY LOCATIONS.

**SURVEYOR'S STATEMENT**

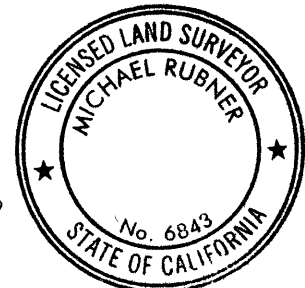
This Corner Record was prepared by me or under my direction in conformance with  
 the Land Surveyors' Act on FEBRUARY 22, 2017.

Signed Scott V. Cunha L.S. Number LS 8525  
SCOTT V. CUNHA

**COUNTY SURVEYOR'S STATEMENT**

This Corner Record was received 20 MARCH 2017 and examined  
 and filed 12 JUNE 2017.

Signed Michael Rubner Title COUNTY SURVEYOR

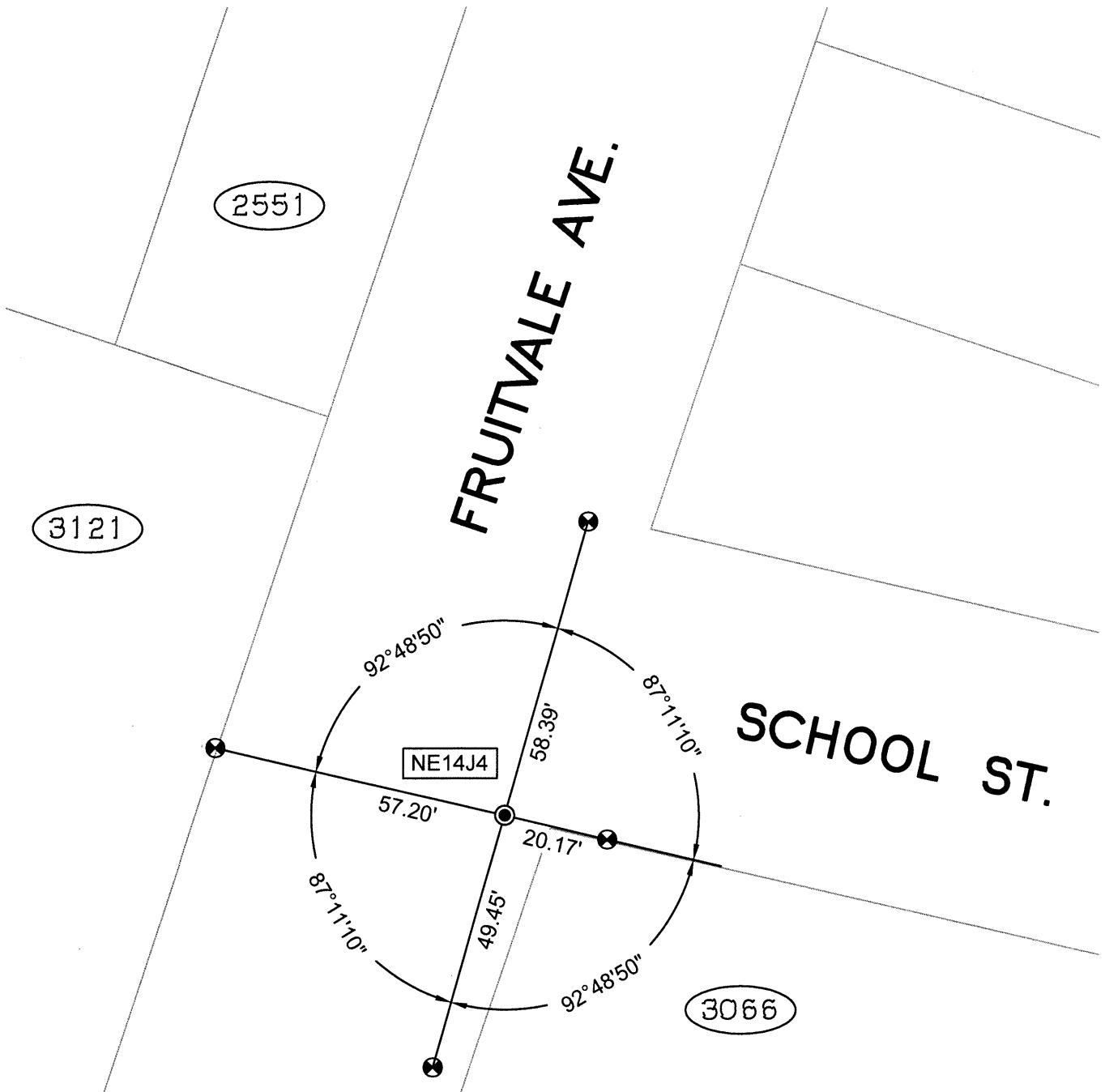


**County Surveyor's Comment** \_\_\_\_\_

SCALE: 1"=30'

## LEGEND

- FOUND BRASS DISC WITH PUNCH IN MONUMENT WELL
- ⊗ SET CUT CROSS IN WALK
- ✕ SET CUT CROSS IN CURB
- ✕ SET MAG AND SHINER
- SET REBAR & CAP STAMPED "CEI RP"
- AA##A# ALAMEDA COUNTY MONUMENT ID
- 19592 REFERENCE STREET ADDRESS



217016-Fruitvale-CR22