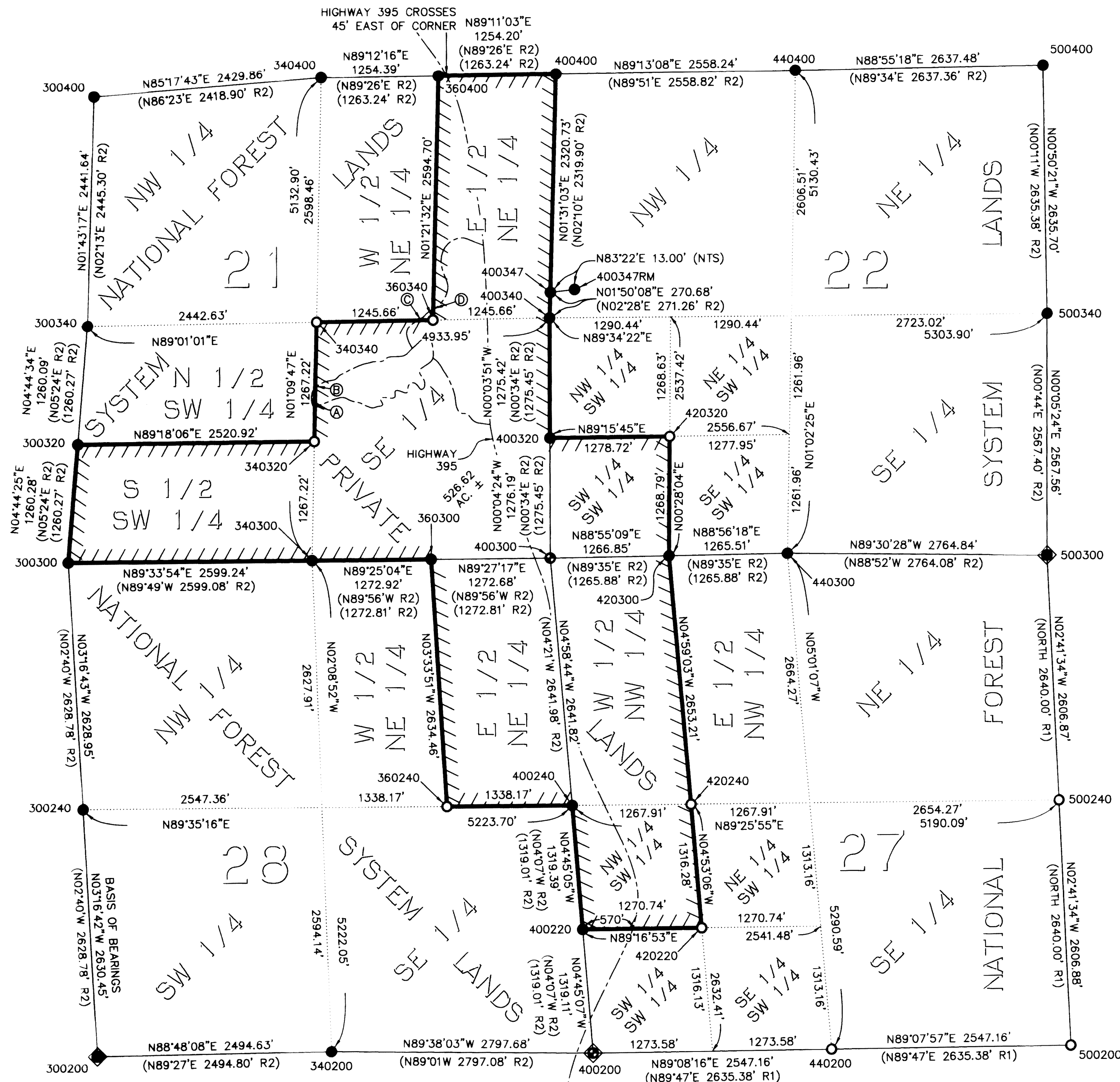
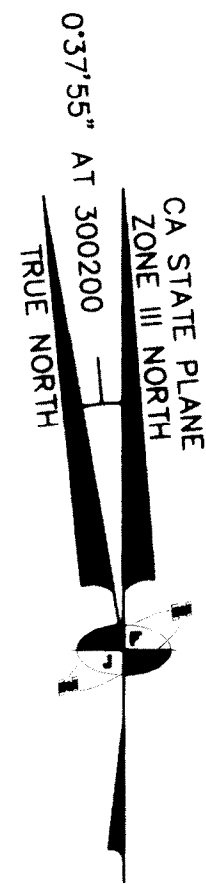


RECORD OF SURVEY No. 31-61

IN THE UNINCORPORATED TERRITORY OF THE COUNTY OF MONO, STATE OF CALIFORNIA,
BEING SECTIONS 21, 22, 27-30, 35 & 36, TOGETHER WITH THE SOUTHERLY TOWNSHIP LINE
FROM SECTION 33 TO 36, TOWNSHIP 7 NORTH, RANGE 23 EAST, MOUNT DIABLO MERIDIAN



LEGEND:

- FOUND NOTHING, SET USFS ALUMINUM MONUMENT: A 3/4" DIAMETER CAP ON A 2 1/2" DIAMETER POST, 30 INCHES LONG, UNLESS OTHERWISE NOTED
- FOUND CORNER AS DESCRIBED, REPLACED WITH USFS ALUMINUM MONUMENT: A 3/4" DIAMETER CAP ON A 2 1/2" DIAMETER POST, 30 INCHES LONG, UNLESS OTHERWISE NOTED
- FOUND BLM MONUMENT AS NOTED
- ◇ INDICATES A CORNER HELD FOR PROPORTIONING
- /// TOIYABE NATIONAL FOREST BOUNDARY POSTED AND MARKED THIS SURVEY
- ESTABLISHED SECTIONAL LINES
- ESTABLISHED SECTIONAL BREAKDOWN LINES
- ROADS OR PATHS AS NOTED
- (NTS) NOT TO SCALE
- R1 ORIGINAL SURVEY PLAT AND NOTES, T7N, R23E, MDM, APPROVED BY THE U.S. SURVEYOR GENERALS OFFICE ON MARCH 30, 1880
- R2 DEPENDENT RESURVEY, T7N, R23E, MDM, APPROVED BY THE CHIEF CADASTRAL SURVEYOR - CALIFORNIA, U.S. DEPARTMENT OF THE INTERIOR, BUREAU OF LAND MANAGEMENT, ON NOVEMBER 8, 1989
- Ⓐ DIRT ROAD CROSSES NATIONAL FOREST BOUNDARY LINE 370 FEET NORTH OF CORNER 340320, 200 FEET SOUTH OF Ⓑ
- Ⓑ DIRT ROAD CROSSES NATIONAL FOREST BOUNDARY LINE 700 FEET SOUTH OF CORNER 340340, 200 FEET NORTH OF Ⓐ
- Ⓒ DIRT ROAD CROSSES NATIONAL FOREST BOUNDARY LINE 165 FEET WEST OF CORNER 360340
- Ⓓ DIRT ROAD CROSSES NATIONAL FOREST BOUNDARY LINE 115 FEET NORTH OF CORNER 360340

GRAPHIC SCALE

