

PARCEL MAP

CONSISTING OF TWO (2) SHEETS

BEING A SUBDIVISION OF LOT 32 OF THAT MAP ENTITLED "MAP OF THE OLD HOMESTEAD TRACT," FILED FOR RECORD ON JUNE 16, 1913 IN BOOK "O", AT PAGE 39, SANTA CLARA COUNTY RECORDS

AND LYING ENTIRELY WITHIN THE

CITY OF MORGAN HILL

SANTA CLARA COUNTY, STATE OF CALIFORNIA

OCTOBER 2009

JMH WEISS, INC.

Civil Engineering ~ Surveying ~ Land Planning
150 S. Almaden Boulevard, Suite 700
San Jose, CA 95113

LEGEND

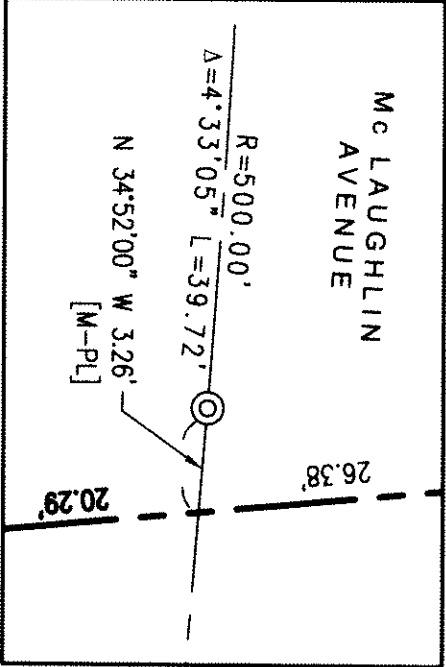
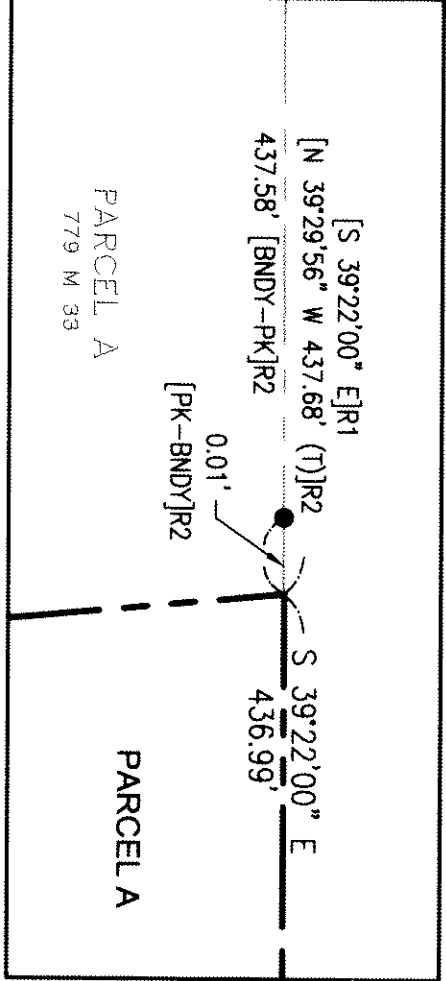
- DISTINCTIVE BORDER LINE
- PROPERTY LINE - ADJACENT SITE
- PROPERTY LINE - NEW
- MONUMENT LINE, OR AS NOTED
- EXISTING EASEMENTS
- NEW EASEMENTS
- THE LINE
- FOUND MONUMENT
- CITY MONUMENT TO BE SET
- 3/4" IP TO BE SET, LS 7139
- FOUND PK NAIL
- TOTAL
- MAP REFERENCE
- MONUMENT
- PK NAIL TO BOUNDARY
- MONUMENT TO PROPERTY LINE
- MONUMENT TO MONUMENT DISTANCE
- THE TO MONUMENT DISTANCE
- PUBLIC SERVICE EASEMENT
- PACIFIC GAS & ELECTRIC
- PT&T
- PTN.
- 779 M 33

NOTES

- THE DISTINCTIVE BORDER LINE INDICATES THE BOUNDARY OF THE LAND BEING SUBDIVIDED BY THIS MAP, AND CONTAINS 2.77 ACRES, MORE OR LESS.
- DISTANCES AND DIMENSIONS ARE GIVEN IN FEET AND DECIMALS THEREOF.
- 3/4" IRON PIPE WITH TAG, LS 7139, TO BE SET AT PROPERTY CORNERS AS SHOWN HEREON.

LINE TABLE		
LINE	BEARING	LENGTH
L1	N 43°54'30" W	9.32'
L2	N 34°52'00" W	3.26'

CURVE TABLE		
CURVE	RADIUS	DELTA
C1	20.00'	44°47'29"



BASIS OF BEARINGS

THE BEARING, NORTH 45°23'00" EAST OF THE MONUMENT LINE OF EAST CENTRAL AVENUE AS SHOWN ON TRACT 9585, RECORDED IN BOOK 779, AT PAGES 33-37, SANTA CLARA COUNTY RECORDS, WAS TAKEN AS THE BASIS OF BEARINGS FOR THIS MAP.

MAP REFERENCES

[R1] MAP OF THE OLD HOMESTEAD TRACT, "O" M 39

[R2] TRACT 9585, 779 M 33-37

DETAIL 'A'

DETAIL 'B'

SOUTHERN PACIFIC TRANSPORTATION COMPANY

S 39°22'00" E 436.99' [6.621 CH]R1

SEE DETAIL 'A'

PARCEL A
779 M 33

LOT 1
779 M 33
JOHNSTON

LOT 2
779 M 33
TWAL

PARCEL C
779 M 33
ALMARAZ

PARCEL B
779 M 33
KOSSOB/
SANFILIPPO

PARCEL 2
376 M 54
POST

MCLAUGHLIN COURT

CENTERLINE
MONUMENT LINE
TAGGED RCE 9685

LANDS OF CAPOGANNIS FAMILY TRUST
DOCUMENT NO. 16438166

LANDS OF LEMMON
DOCUMENT NO. 14853998

LOT 26
"O" M 39
KUSHNER

PTN. LOT 31
CITY OF
MORGAN HILL

MINOTON REVOCABLE TRUST
DOCUMENT NO. 1176700 AND 15496811



SCALE: 1" = 30'

SHEET 2 OF 2

JMH JOB# 4670