

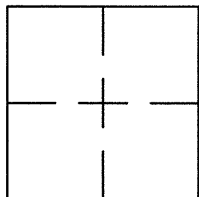
CORNER RECORD

Document Number CR 9158

City of OAKLAND

County of ALAMEDA, California

Brief Legal Description WELL MONUMENT LOCATED WITHIN GOLF LINKS ROAD.



CORNER RECORD

Government Corner ☐ Control ☐
 Meander ☐ Property ☐
 Rancho ☐ Other ☒
 Date of Survey 10/11/16

COORDINATES

(Optional)

N. 2101032.8±
 E. 6091290.3±
 Zone 3 Datum NAD 83
 Elev. _____

Corner — Left as found ☒ Found and tagged ☐ Established ☐ Reestablished ☐ Rebuilt ☐

Identification and type of corner found: Evidence used to identify or procedure used to establish of reestablish the corner:
FOUND BRASS DISC WITH NIPPLE IN MONUMENT WELL LOCATED WITHIN GOLF LINKS ROAD.

SEE CR 8576

THIS POINT WAS FOUND IN GOOD CONDITION AFTER A CONSTRUCTION
PROJECT IN THE VICINITY.

A description of the physical condition of the monument as found and as set or reset: _____

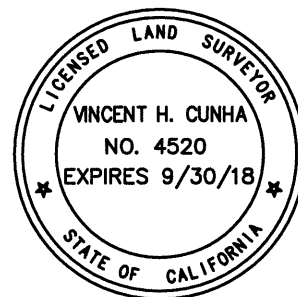
FOUND AND SET POINTS AS SHOWN ON PAGE 2.

THE TIES SHOWN HEREON ARE FOR THE PURPOSE OF PERPETUATING FOUND MONUMENTATION.
NO CLAIM IS MADE AS TO THE RELATIONSHIP OF THE POINTS OR LINES SHOWN HEREON TO
TRUE BOUNDARY LOCATIONS.

SURVEYOR'S STATEMENT

This Corner Record was prepared by me or under my direction in conformance with
 the Land Surveyors' Act, on October 17, 2016.

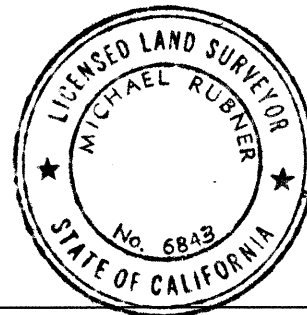
Signed Vincent H. Cunha L.S. Number LS 4520
 VINCENT H. CUNHA



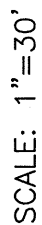
COUNTY SURVEYOR'S STATEMENT

This Corner Record was received 21 OCTOBER 2016 and examined
 and filed 8 DECEMBER 2016.

Signed Michael Rubner Title COUNTY SURVEYOR



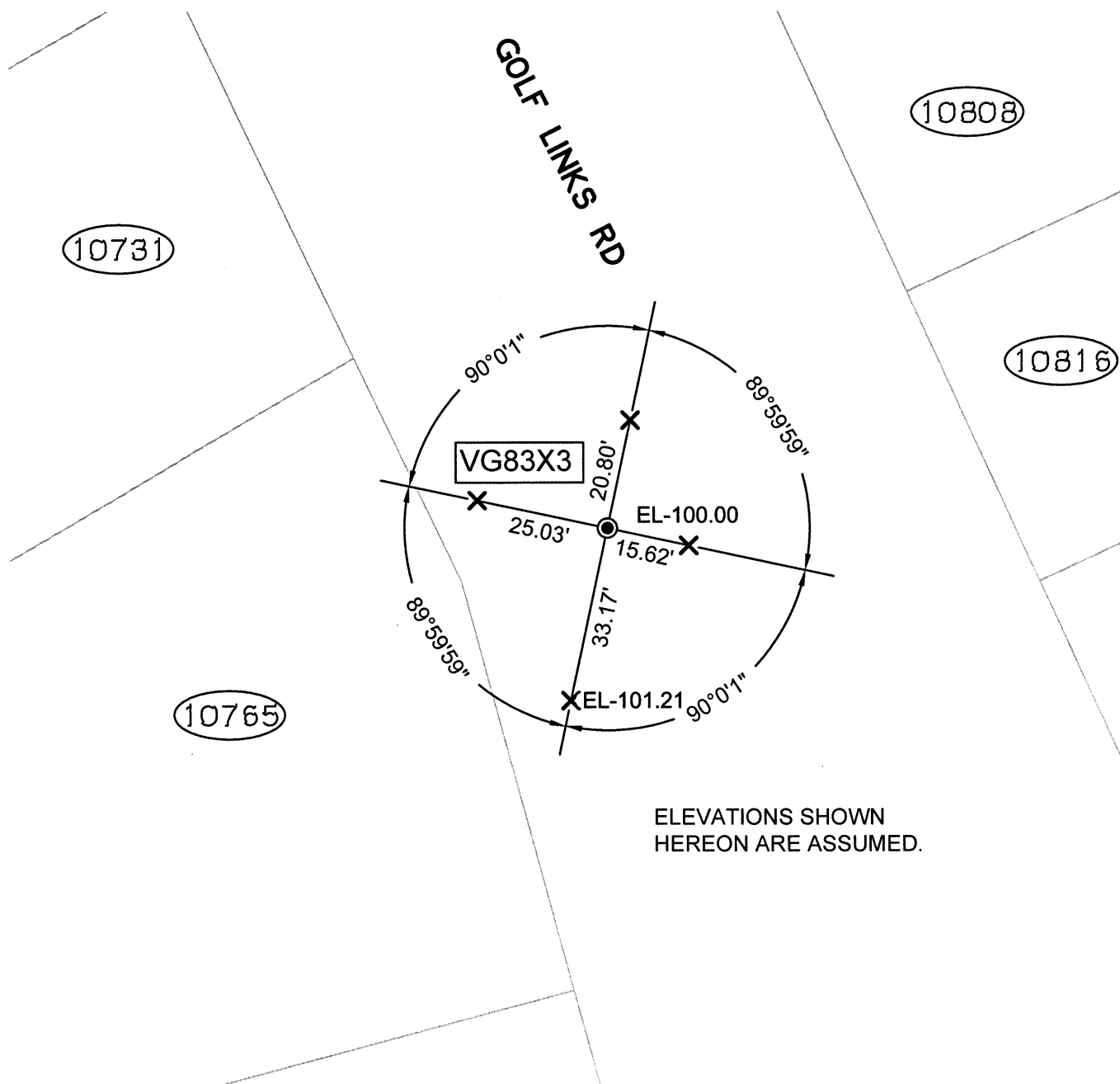
County Surveyor's Comment _____



- FOUND BRASS DISC WITH NIPPLE IN MONUMENT WELL
- ⊗ FOUND CUT CROSS IN WALK
- ✕ FOUND CUT CROSS IN CURB
- FOUND REBAR & CAP STAMPED "CEI RP"

1959) REFERENCE STREET ADDRESS

AA##A# ALAMEDA COUNTY MONUMENT ID



ELEVATIONS SHOWN
HEREON ARE ASSUMED.

216040-GOLF-CR32-POST