

CORNER RECORD

BK 13 B 48

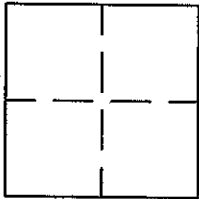
APN No. _____ (Optional)

Document Number CR - 1948

UNINCORPORATED

County of ALAMEDA, California

Brief Legal Description NEW MONUMENT ON FOOTHILL BLVD. AT MIRAMONTE AVENUE.



CORNER TYPE

Government Corner ☐ Control ☐
 Meander ☐ Property ☐
 Rancho ☐ Other ☒
 Date of Survey JUNE 2003

COORDINATES (Optional)

N. _____
 E. _____
 Zone _____ Datum _____
 Elev. _____

Corner - Left as found ☐ Found and tagged ☐ Established ☒ Reestablished ☐ Rebuilt ☐

In compliance with Section 8771 of the Professional Land Surveyors' Act, this corner record is being filed to ESTABLISH _____ / REESTABLISH _____ the position of an existing monument PRIOR _____ / SUBSEQUENT _____ to street or highway reconstruction. (Use this portion only when applicable.)

Identification and type of corner found: Evidence used to identify or procedure used to establish or reestablish the corner: THE MONUMENT WAS ESTABLISHED FROM EXISTING CONTROL POINTS SHOWN ON RECORD OF SURVEY NO. 326, 6RS79.

A description of the physical condition of the monument as found and as set or reset: A NEW ALAMEDA COUNTY NIPPLED DISK IN MONUMENT WELL WAS SET ON FOOTHILL BOULEVARD ON THE WESTERLY SIDE NEAR THE CURB. THE MONUMENT IS ON THE MONUMENT LINE EXTENDED OF MIRAMONTE AVENUE. SEE DRAWING NEXT PAGE FOR DISK STAMPING AND POSITION INFORMATION.

SURVEYOR'S STATEMENT

This Corner Record was prepared by me or under my direction in conformance with the Land Surveyors' Act on August 1, 2003

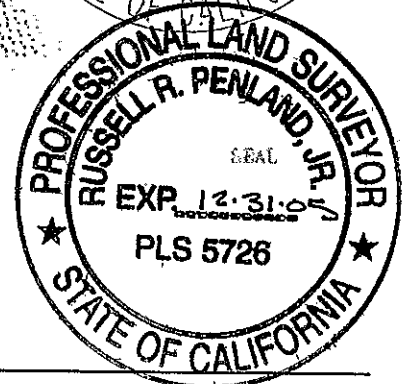
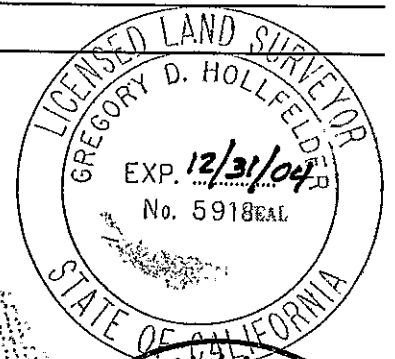
Signed Gregory D. Hollfelder L.S. or R.C.E. Number 5918

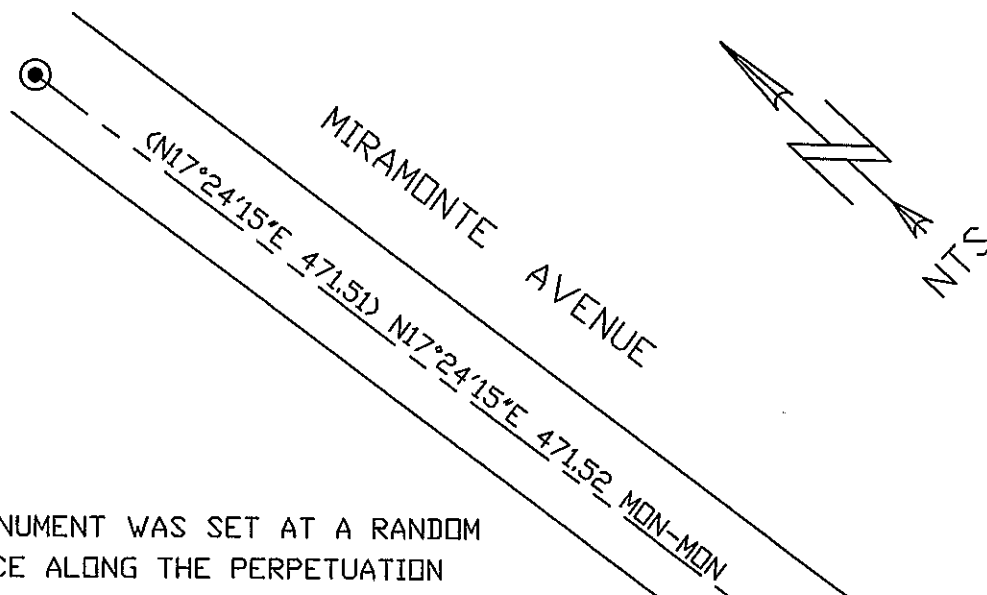
COUNTY SURVEYOR'S STATEMENT

This Corner Record was received 8-1 2003 and examined and filed 3-29-2004

Signed Russell R. Penland, Jr. Title County Surveyor

County Surveyor's Comment _____





NOTE:

THE MONUMENT WAS SET AT A RANDOM DISTANCE ALONG THE PERPETUATION OF THE MONUMENT LINE AS SHOWN ON RECORD OF SURVEY NO. 326.

REFERENCE:

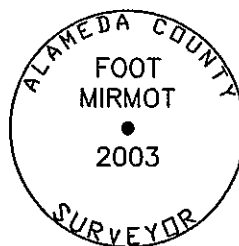
RECORD OF SURVEY NO. 326, 6RS79.

LEGEND:

- FOUND CONCRETE MONUMENT
- SET NEW MONUMENT
- (XX) RECORD

FOOTHILL BOULEVARD

MIRAMONTE AVENUE



CURB LINE