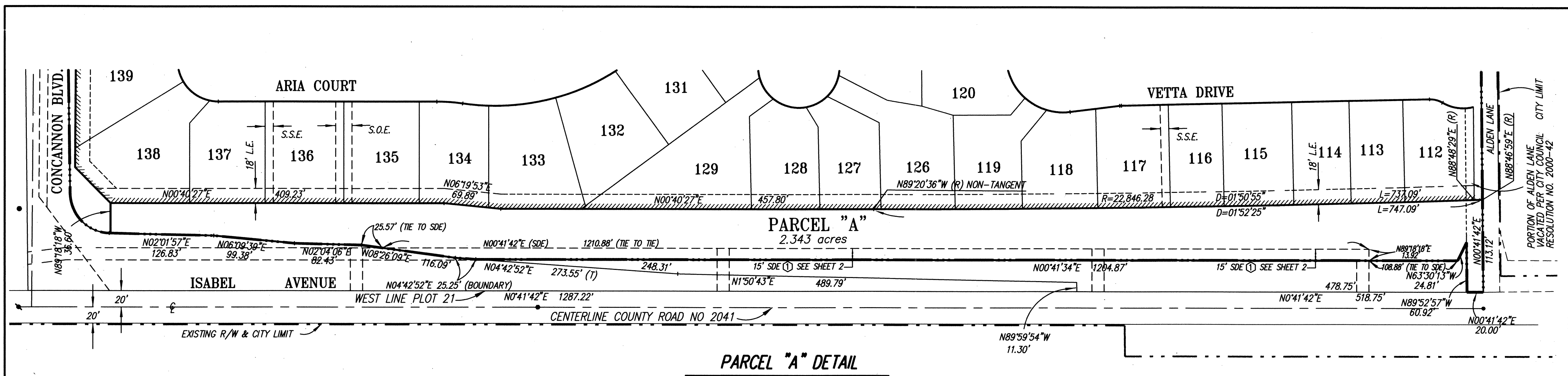


TRACT 7087

MAP BK 250

Pg 90



PARCEL "A" DETAIL

LEGEND OF TERMS & SYMBOLS

- BOUNDARY OF TRACT
- - - EASEMENT LINE
- - - MONUMENT LINE
- LOT LINE
- RIGHT OF WAY LINE
- CENTER LINE
- - - CITY LIMIT LINE

- ⊙ SET STREET MONUMENT, LS 5311
- ⊙ FND STREET MONUMENT AS NOTED
- SET 5/8" REBAR & PLASTIC CAP LS 5311
- FOUND SURVEY POINT AS NOTED
- IB FOUND IRON BOLT, AS NOTED
- ▲ RRS FOUND RAILROAD SPIKE, AS NOTED
- FOUND NAIL, AS NOTED
- FD FOUND
- IP IRON PIPE
- PM PARCEL MAP
- # M # BOOK NO. OF MAPS & PAGE NO.
- Ⓢ EASEMENT NUMBER
- P.U.E. PUBLIC UTILITY EASEMENT
- E.V.A.E. EMERGENCY VEHICLE ACCESS EASEMENT
- L.E. LANDSCAPE EASEMENT
- S.S.E. SANITARY SEWER EASEMENT
- S.D.E. STORM DRAINAGE EASEMENT
- S.O.E. STORMWATER OVERFLOW EASEMENT
- (M-M) MONUMENT TO MONUMENT
- (M-TL) MONUMENT TO TRACT LIMIT
- M, MON MONUMENT
- (R) RADIAL BEARING
- (T) TOTAL
- sq.ft. or s.f. SQUARE FEET
- STREET CENTERLINE
- [] RECORD INFORMATION, REF. NOTED
- { } RECORD INFORMATION, REF. NOTED
- ////// RELINQUISHMENT OF ADJUTTER'S RIGHTS AND PRIVATE ACCESS PROHIBITED

BASIS OF BEARINGS

BEARINGS SHOWN HEREON ARE BASED UPON THE LINE BETWEEN FOUND MONUMENTS ON CONCANNON BOULEVARD SHOWN ON THE MAP OF TRACT 5866 (217 M. 86) AS N88°53'25"W.

TRACT 7087
PRIMA

A PORTION OF PLOT 21, BERNAL PORTION OF THE
RANCHO EL VALLE DE SAN JOSE (87-344604)
CITY OF LIVERMORE - CALIFORNIA

MILANI & ASSOCIATES
3480 BUSKIRK, SUITE 225
PLEASANT HILL, CALIFORNIA 94523

MARCH, 1999

SCALE 1"=80'

SPECIAL MAPPING NOTES:

A CHISELED MARK SHALL BE CUT INTO THE TOP OF CURB AT THE PROLONGATION OF THE LOT LINES, AND AN IRON PIPE/PLUG, A REBAR AND CAP, OR A 2" x 2" x 12" REDWOOD HUB SHALL BE SET AT ALL NON-FRONTAGE CORNER AND ANGLE POINTS.