

How to solved the Double Image

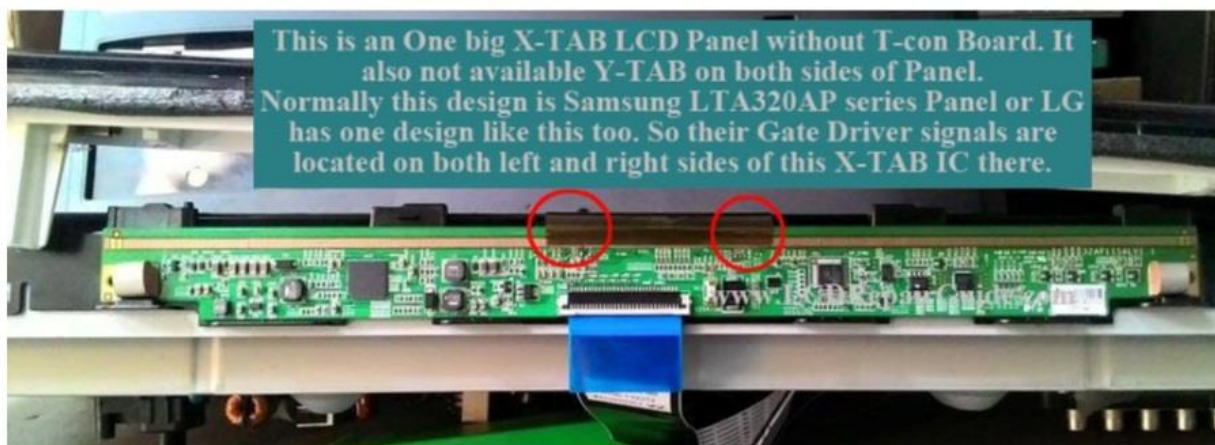
Samsung LTA320AP Series LCD Panel with Double Images

As a sample to let you learn if the LCD Panel doesn't have T-con board and just one X-TAB only on the Source PCB board. So what to do with this type of LCD Panel?



As usual with this type of Double Images problem, directly go to checking their T-con board. Because of type of LCD Panel design is just has one big X-TAB IC only, and also no any Y-TAB on both sides of Panel.

Actually the Gate Driver signal lines are on the both left & right sides of this big X-TAB IC pins as photo below:

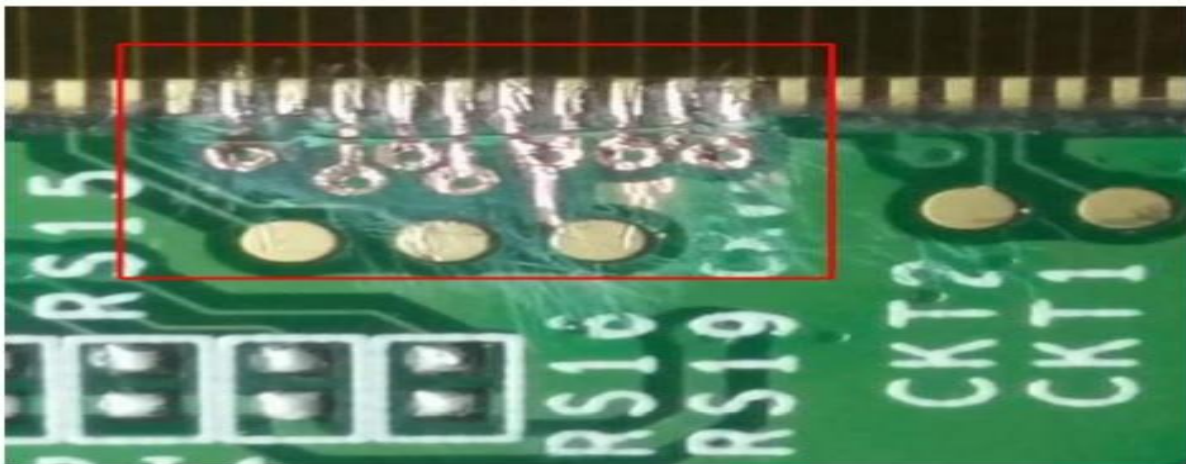


MAHESH KAKKAPOYIL
SABT TECHNOLOGY
KINGDOM OF BAHRAIN
Email: mahesh@sabtechnology.net

Find out the Gate Driver signal lines in front of this big X-TAB IC. Try to find any marking code for Gate signals, if not, try to checking their voltages about 8V~10V (is stable voltage values). It will depend on inches Panel and design, so their voltage will a bit different.

First try to find out the Gate signals, after that using a small stationery knife carefully to cut off these Gate signals one by one follow to see the display is ok or not. Remember when cut off the lines MUST off the power TV!

If the cut off all the left side Gate signals also same problem, then you need to re-solder back the cut off lines. After that find right side Gate signals lines to do the same thing. After cut off the Gate signals line, the display is change to a bit Ok, continue to cut off other signal lines, until the display is back to normal.



Finally this TV is back to normal now. The display images quality is not perfect but acceptable.



MAHESH KAKKAPOYIL
SABT TECHNOLOGY
KINGDOM OF BAHRAIN
Email: maresh@sabtechnology.net