

84/40

LEGEND

- Set 1" Iron Pipe (Tag L.S. 3344)
 - Set R.R. Spike
 - Set Nail & Shiner
 - Found as Noted
 - D. Deed
 - R. Record
 - ⊙ Found County Monument
- [N89°45'E 38.900 CH (2567.40) D.] compiled, not surveyed. Also, fences are not surveyed.

SCALE: 1"=200'

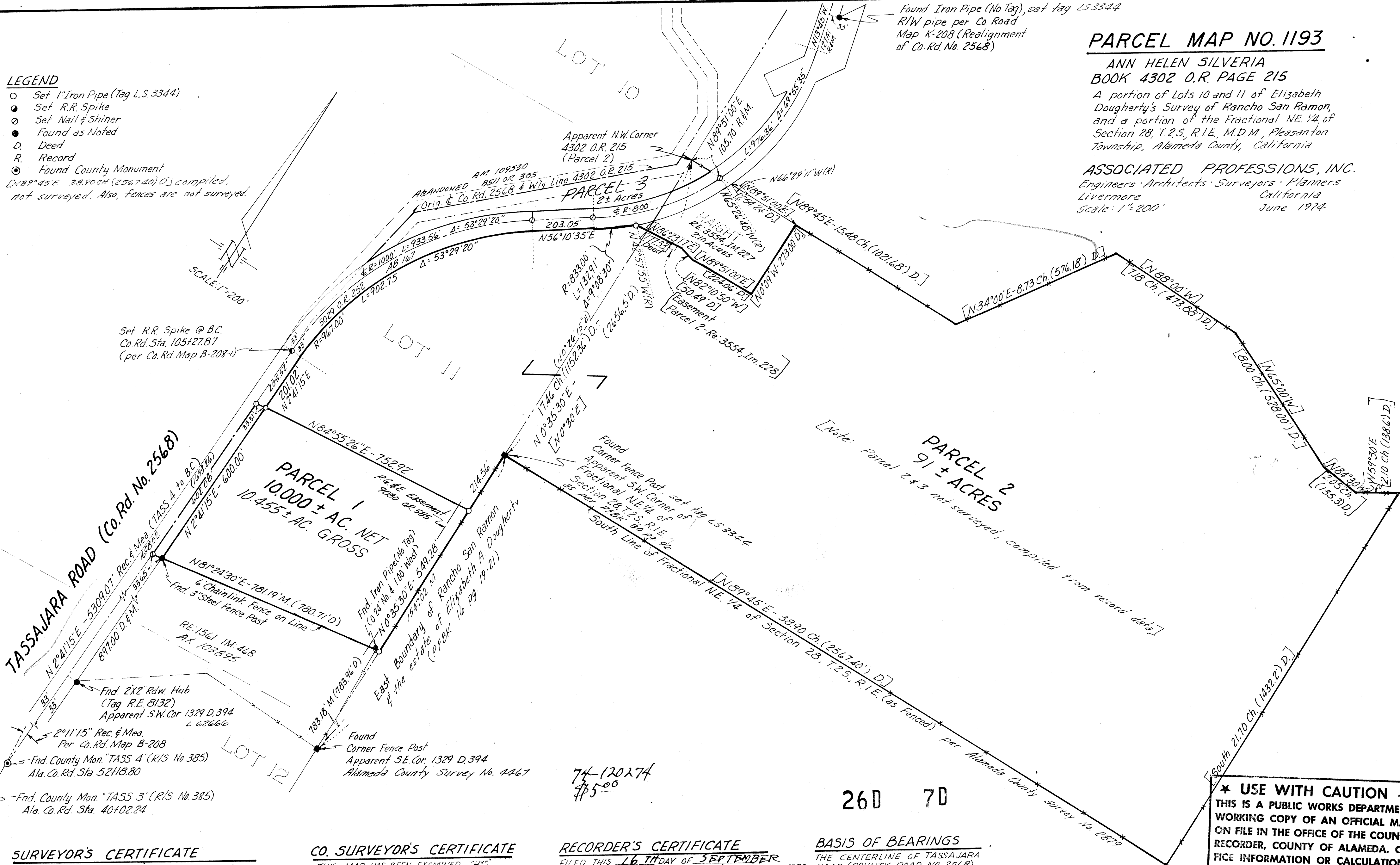
Set R.R. Spike @ B.C.
Co. Rd. Sta. 105+27.87
(per Co. Rd. Map B-208-1)

Found Iron Pipe (No Tag), set tag LS3344
R/W pipe per Co. Road
Map K-208 (Realignment
of Co. Rd. No. 2568)

PARCEL MAP NO. 1193

ANN HELEN SILVERIA
BOOK 4302 O.R. PAGE 215
A portion of Lots 10 and 11 of Elizabeth
Dougherty's Survey of Rancho San Ramon,
and a portion of the Fractional NE 1/4 of
Section 28, T.2S, R.1E, M.D.M., Pleasanton
Township, Alameda County, California

ASSOCIATED PROFESSIONS, INC.
Engineers · Architects · Surveyors · Planners
Livermore California
Scale: 1"=200'
June 1974



SURVEYOR'S CERTIFICATE

THIS MAP WAS PREPARED BY ME OR UNDER MY DIRECTION AND IS BASED UPON A FIELD SURVEY IN CONFORMANCE WITH THE REQUIREMENTS OF THE SUBDIVISION MAP ACT AT THE REQUEST OF ANN HELEN SILVERIA ON MAY 20, 1974. I HEREBY CERTIFY THAT IT CONFORMS TO THE APPROVED TENTATIVE MAP AND THE CONDITIONS OF APPROVAL THEREOF; THAT ALL PROVISIONS OF APPLICABLE STATE LAW AND LOCAL ORDINANCES HAVE BEEN COMPLIED WITH.

Edward M. King
EDWARD M. KING - L.S. 3344

CO. SURVEYOR'S CERTIFICATE

THIS MAP HAS BEEN EXAMINED FOR CONFORMANCE WITH THE REQUIREMENTS OF SECTION 54535, P.C. 1973, AND THE SUBDIVISION MAP ACT.

Herbert G. Crowe
COUNTY SURVEYOR
HERBERT G. CROWE
RCE NO. 6516

RECORDER'S CERTIFICATE

FILED THIS 16th DAY OF SEPTEMBER 1974, AT 9:50 A.M. IN BOOK 84 OF PARCEL MAPS AT PAGE 40 AT THE REQUEST OF ASSOCIATED PROFESSIONS INC.

JACK G. BLUE
COUNTY RECORDER

BY DEPUTY [Signature]

BASIS OF BEARINGS

THE CENTERLINE OF TASSAJARA ROAD (COUNTY ROAD NO. 2568) TAKEN AS N2°41'15"E. between set R.R. spike & monument "TASS 4"

★ USE WITH CAUTION ★
THIS IS A PUBLIC WORKS DEPARTMENT WORKING COPY OF AN OFFICIAL MAP ON FILE IN THE OFFICE OF THE COUNTY RECORDER, COUNTY OF ALAMEDA. OFFICE INFORMATION OR CALCULATIONS MAY HAVE BEEN ADDED HEREON.

P.M. No. 1193

SHEET 1 OF 1 SHEETS JOB NO. 74-40

51-DD-18

FILED 9-16-74 84/40