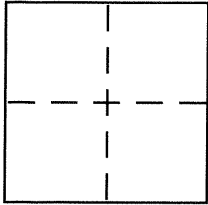


Bk 35 Pg 96

CORNER RECORD

Document Number CR 4010
City of BERKELEY County of ALAMEDA, California

Brief Legal Description CITY MONUMENT B0722



CORNER TYPE

Government Corner ☐ Control ☒
Meander ☐ Property ☐
Rancho ☐ Other ☐
Date of Survey 11-9-2009

COORDINATES (Optional)

N. _____
E. _____
Zone _____ NAD27 ☐ NAD83 ☐
NAD83 Epoch _____
Elev. _____
Vert. Datum: NGVD29 ☐ NAVD88 ☐
Meas. Units: Metric ☐ Imperial ☐

Corner – Left as found ☒ Found and tagged ☐ Established ☐ Reestablished ☐ Rebuilt ☐

Identification and type of corner found: Evidence used to identify or procedure used to establish or reestablish the corner:

FOUND CITY MONUMENT

In compliance with Section 8771 of the Professional Land Surveyors' Act, this corner record is being filed to ESTABLISH the position of an existing monument PRIOR to street or highway construction.

A description of the physical condition of the monument as found and as set or reset: _____

SET CROSS

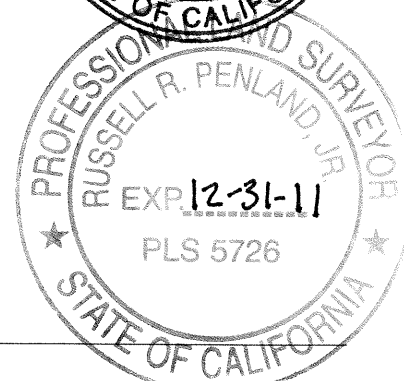
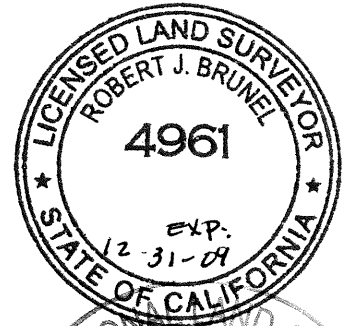
SURVEYOR'S STATEMENT

This Corner Record was prepared by me or under my direction in conformance with the Land Surveyor's Act on NOV. 13 2009
Signed Robert J. Brunel P.L.S. or R.C.E. No. 4961

COUNTY SURVEYOR'S STATEMENT

This Corner Record was received 12-28-2009
and examined and filed 2-2-2010
Signed Russell R. Penland, Jr. P.L.S. or R.C.E. No. 5726
Title COUNTY SURVEYOR

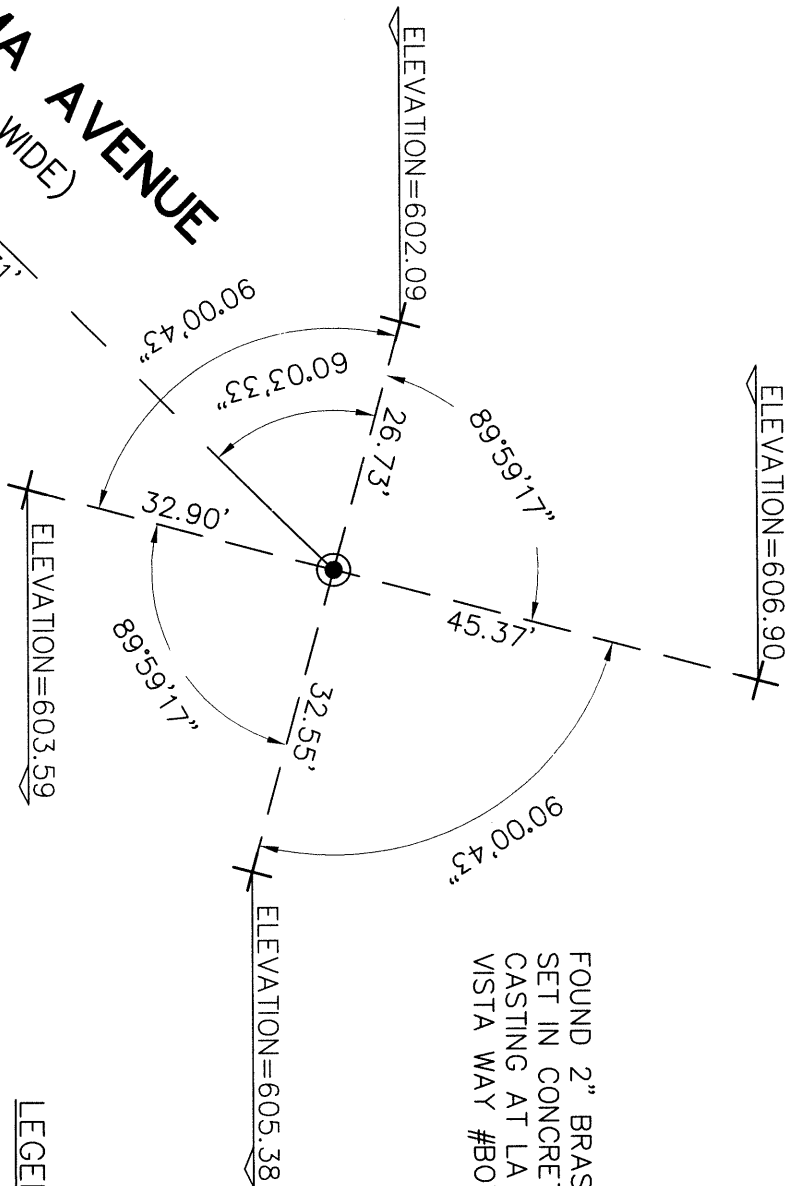
County Surveyor's Comment _____





LA LOMA AVENUE
(60' WIDE)

FOUND 3/8" BRASS PIN
SET IN CONCRETE INSIDE STANDARD
CASTING OPPOSITE 1515 LA LOMA AVENUE
#B0655 ELEVATION=593.20



FOUND 2" BRASS DISC WITH PUNCH
SET IN CONCRETE INSIDE STANDARD
CASTING AT LA LOMA AVENUE AND BUENA
VISTA WAY #B0722 ELEVATION=603.77

LEGEND

- FOUND CITY MONUMENT AS NOTED
- + SET CROSS

CORNER RECORD

TO REFERENCE THE MONUMENT
LA LOMA AVENUE AT BUENA VISTA WAY
CITY OF BERKELEY, COUNTY OF ALAMEDA, CALIFORNIA

NOVEMBER 9, 2009

SCALE: 1"=20'

F.B. NO. 1290 7666 COB CEDAR ST, LA LOMA AVE.DWG JOB NO. 09-7666