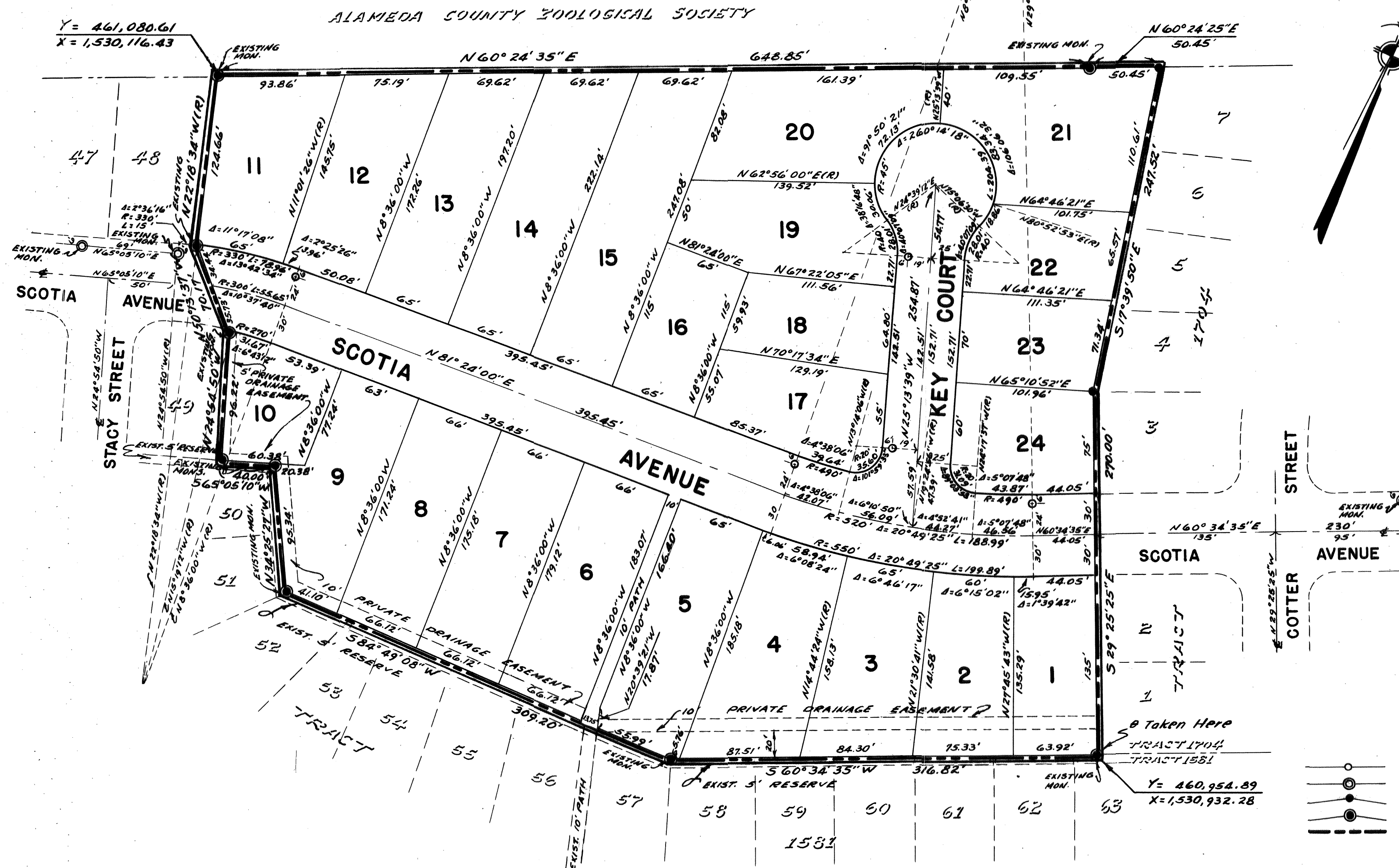


TRACT 2069,

OAKLAND, ALAMEDA COUNTY, CALIFORNIA.

PHIL R. JONES ENGINEERING CO.
SAN PABLO CALIFORNIA
SCALE: 1" = 60'
JUNE, 1959



$\theta = 0^\circ 59' 36''$ at $Y = 460,954.89$
 $X = 1,530,932.28$

Bearings and Coordinates shown are based
on the California Coordinate System Zone 3.
Distances shown are ground distances.
To obtain Grid Distances multiply by 0.9999029

LEGEND

- Indicates Proposed Concrete Monument.
- Indicates Existing Concrete Monument.
- Indicates Proposed 2" Iron Pipe Monument.
- Indicates Existing 2" Iron Pipe Monument.
- Indicates Tract Boundary.

AQ124595

SHEET NO. TWO(2) OF TWO(2) SHEETS

AQ124595 FILED OCT. 21, 1959 BOOK 41 PAGE 49