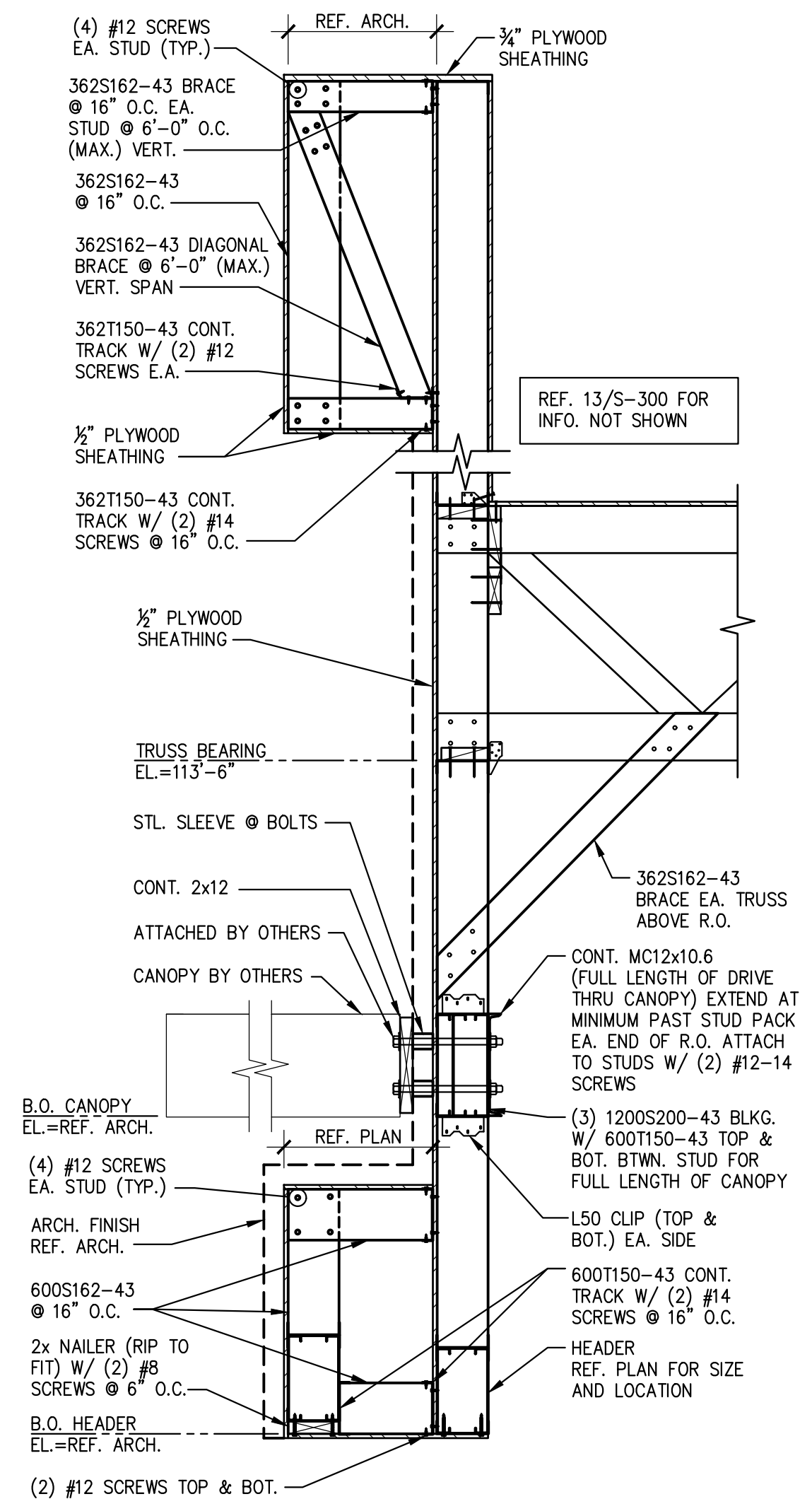
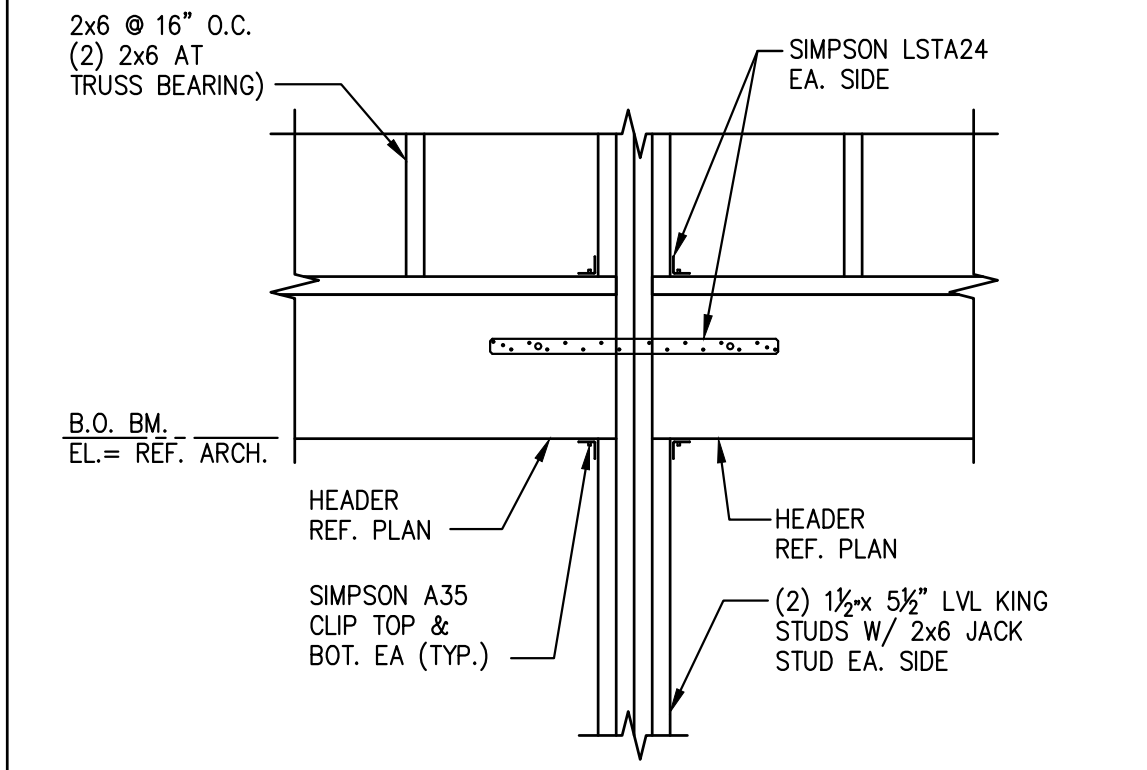


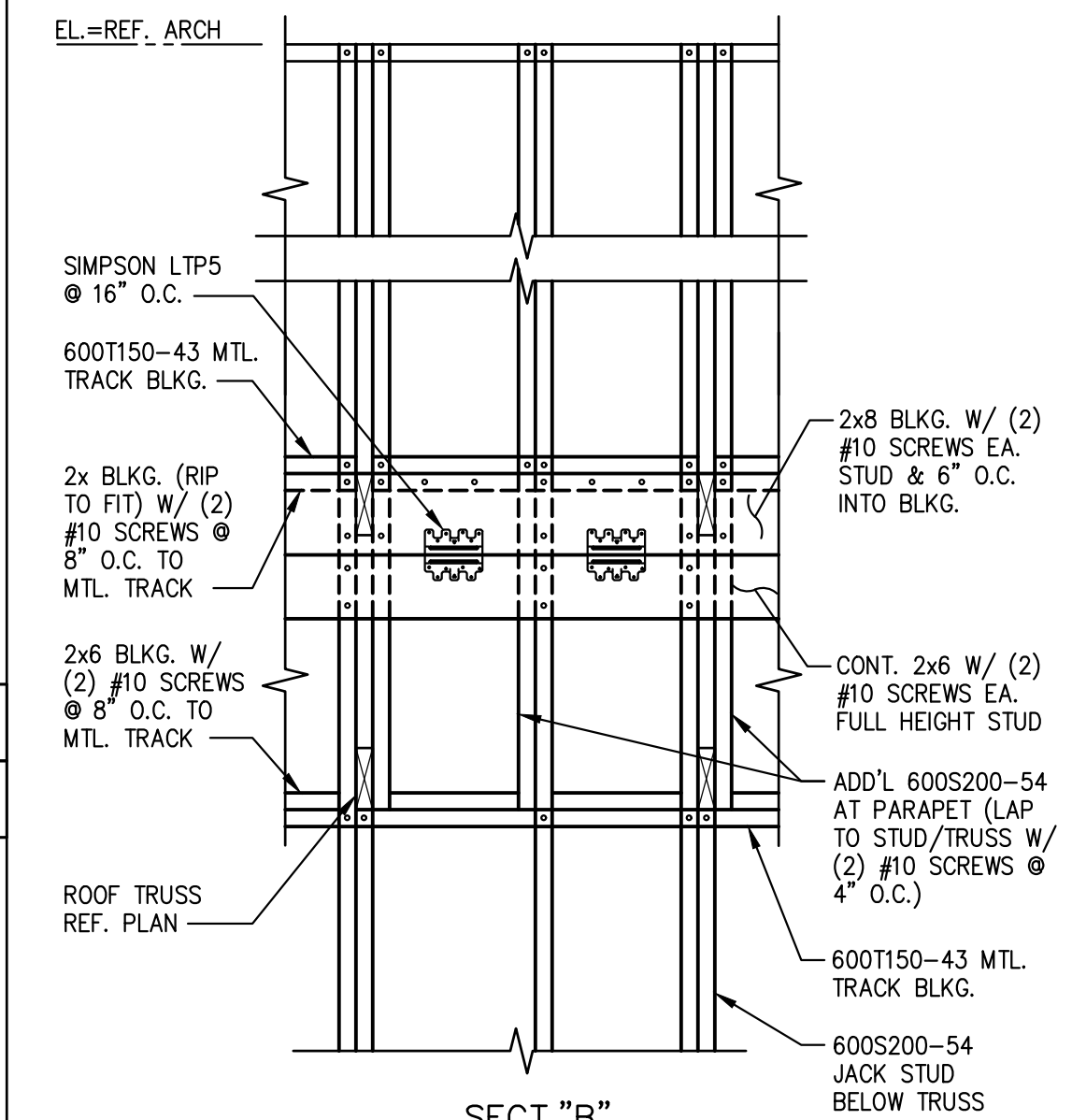
SECTION 16
SCALE: 3/4"=1'-0" S-300



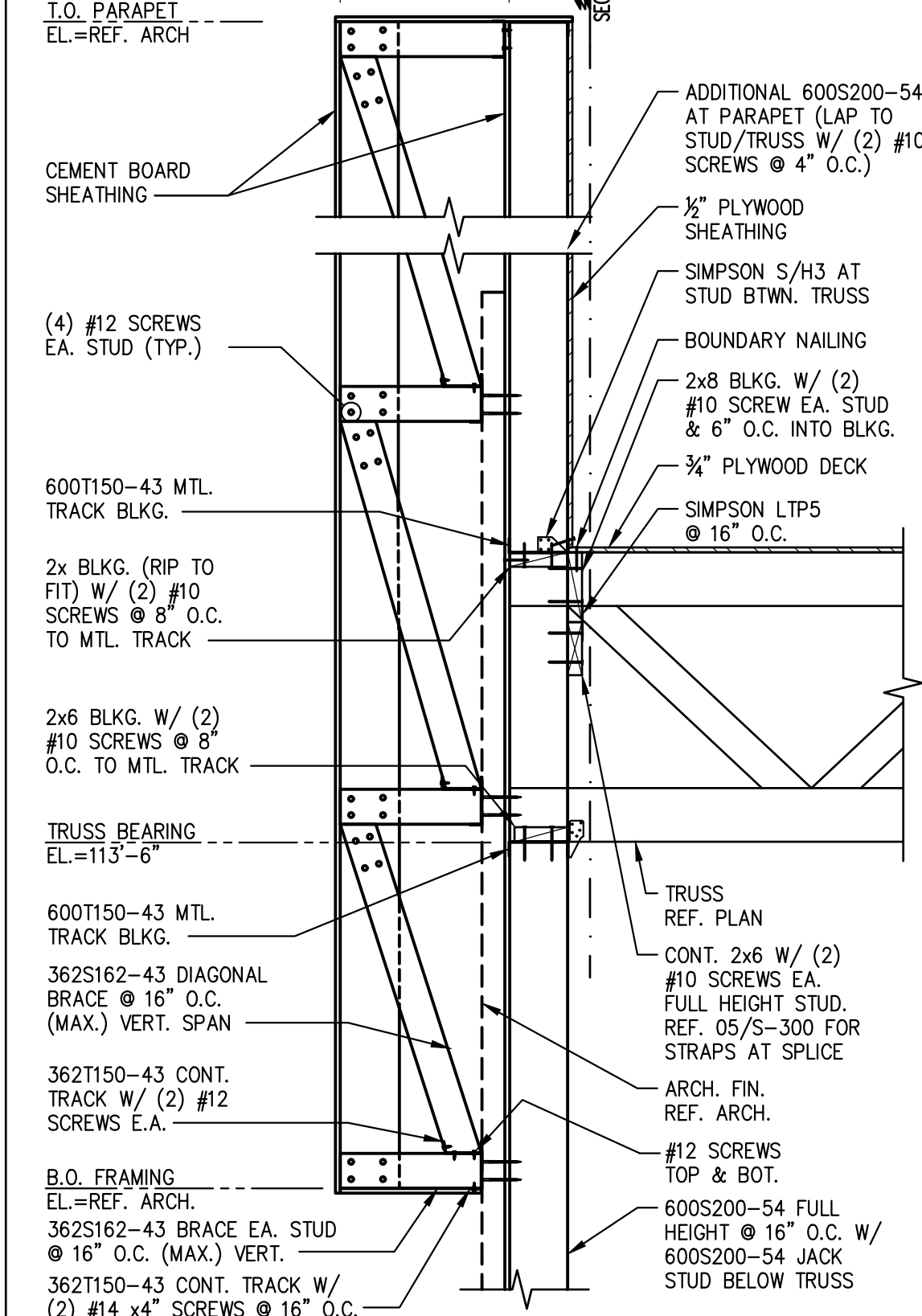
SECTION 19
SCALE: 3/4"=1'-0" S-300



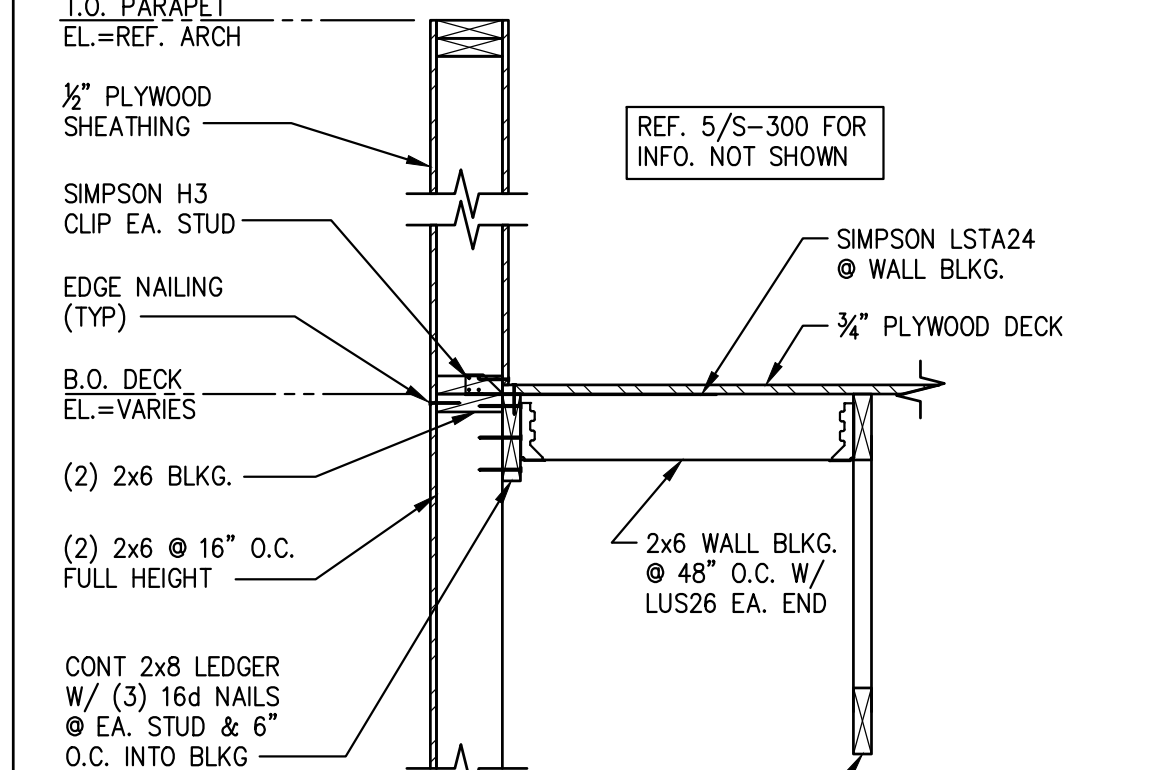
SECTION 11
SCALE: 3/4"=1'-0" S-300



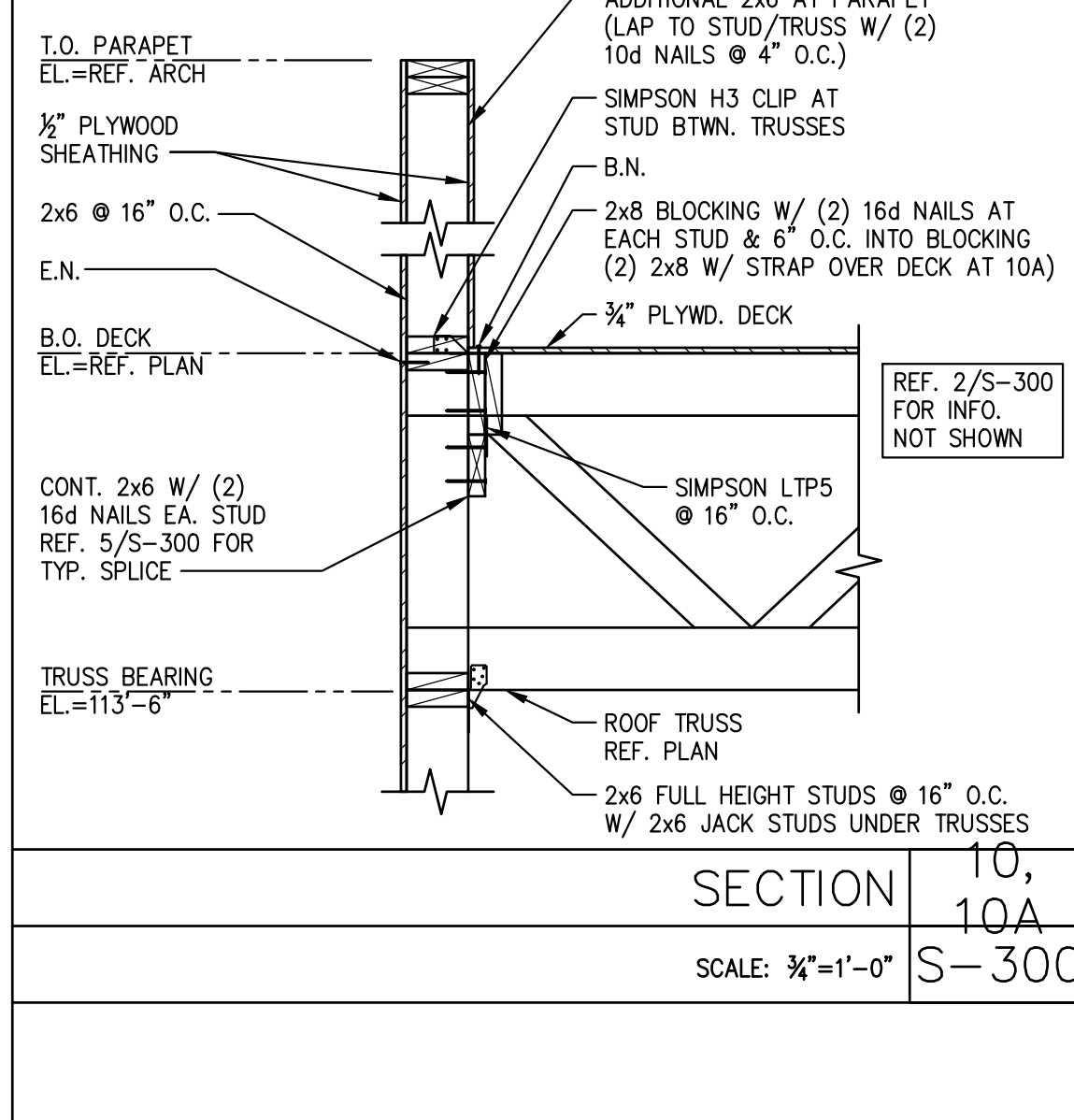
SECTION 10
SCALE: 3/4"=1'-0" S-300



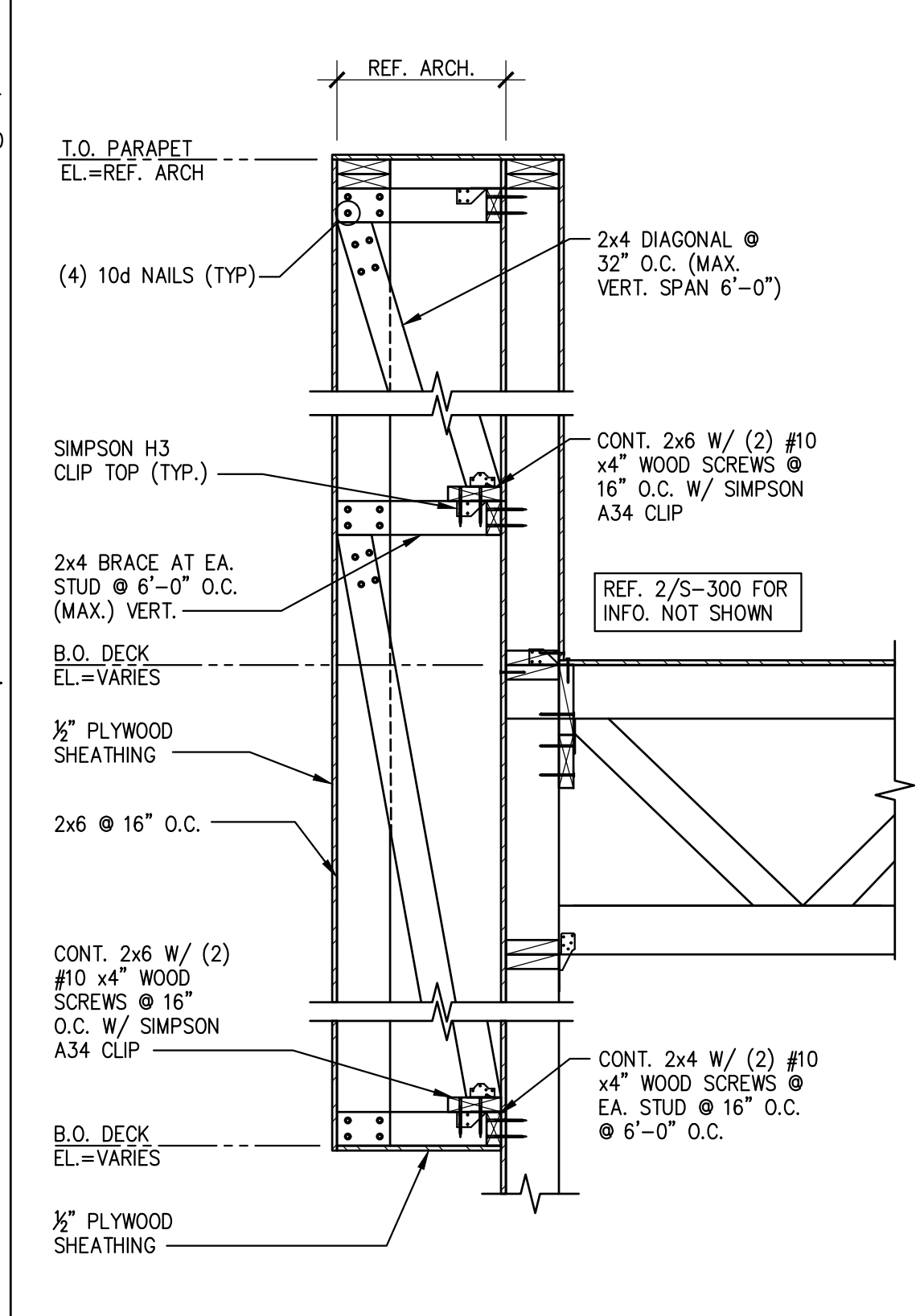
SECTION 7
SCALE: 3/4"=1'-0" S-300



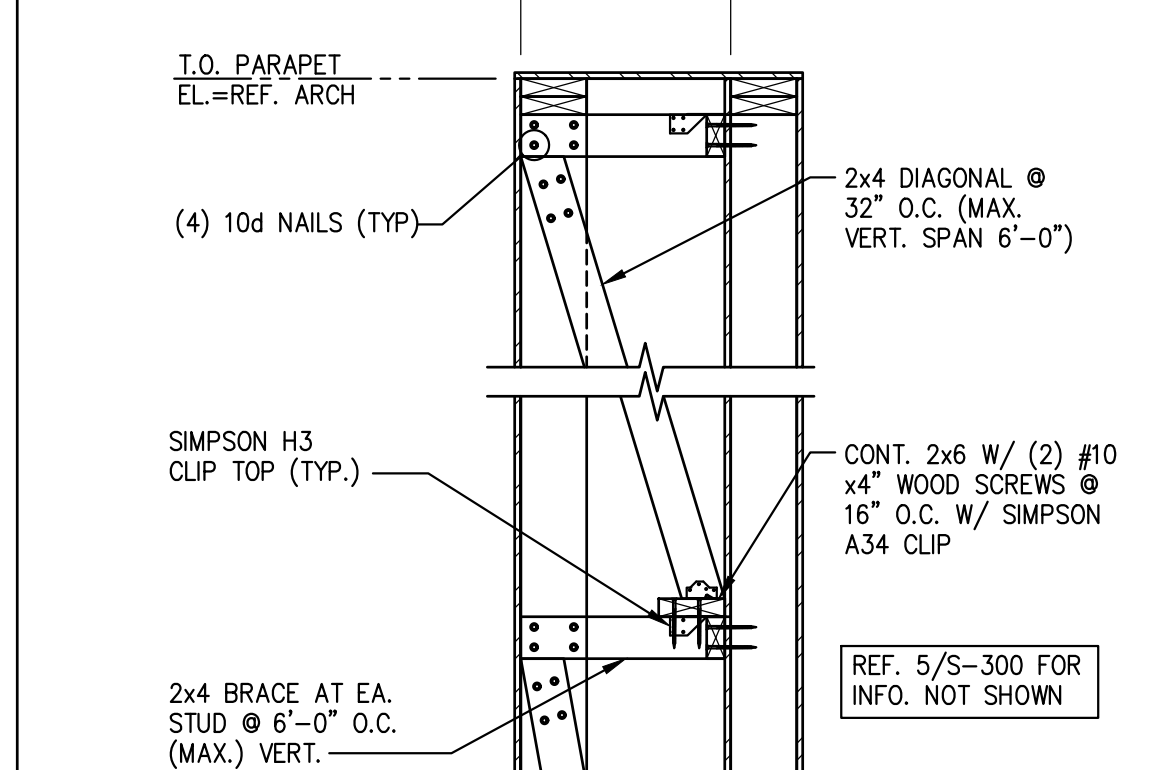
SECTION 10A
SCALE: 3/4"=1'-0" S-300



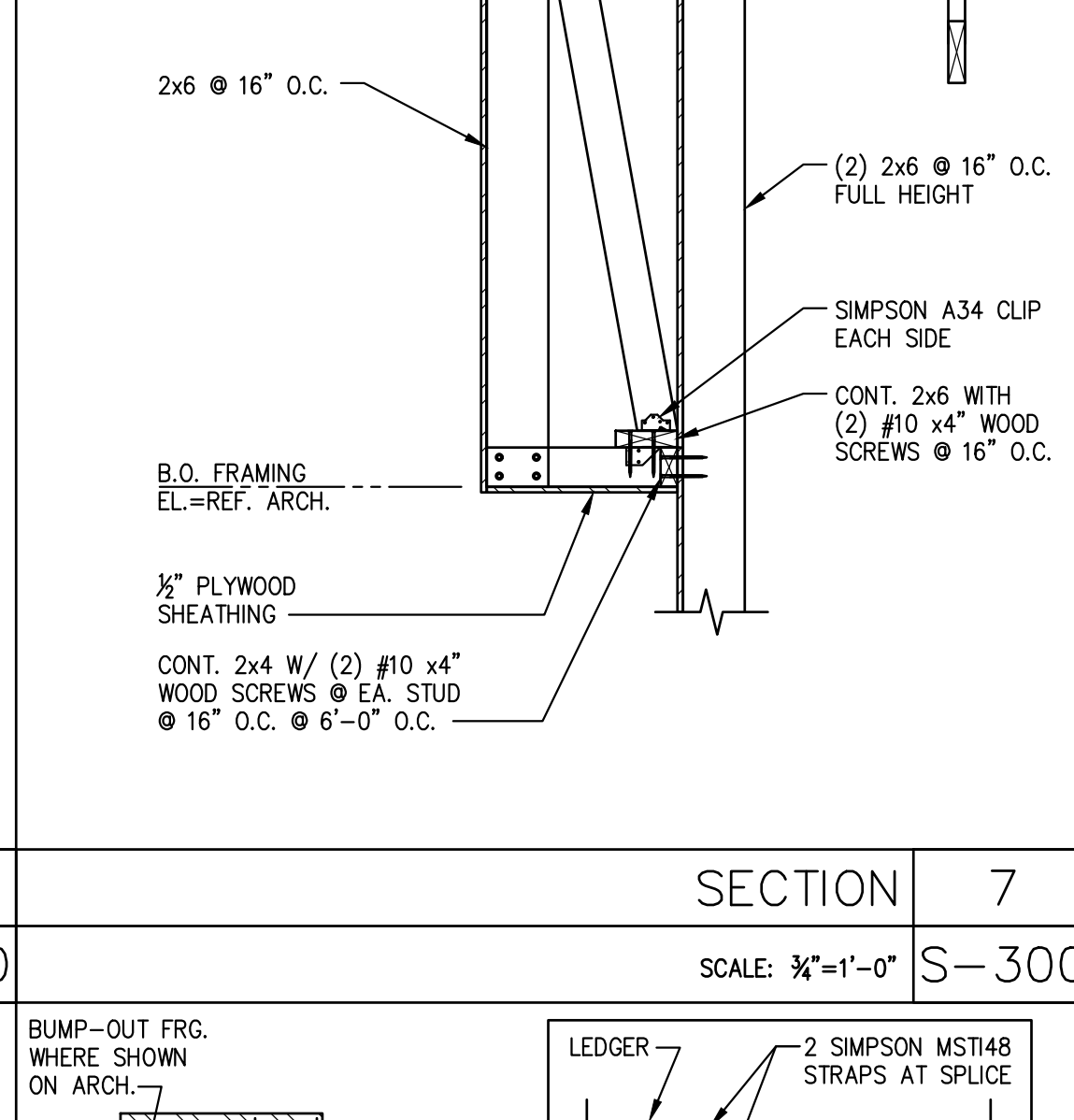
SECTION 10A
SCALE: 3/4"=1'-0" S-300



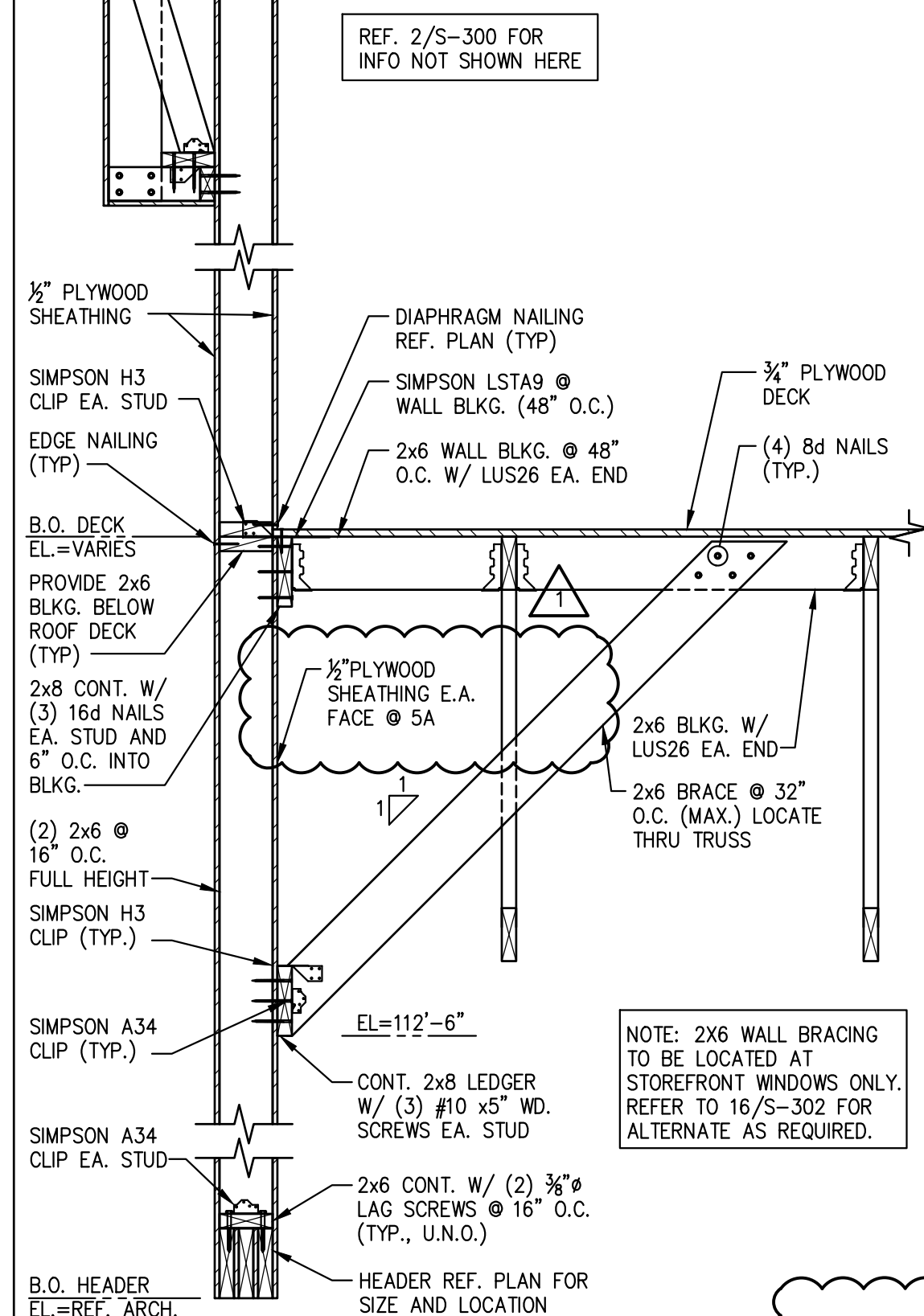
SECTION 10A
SCALE: 3/4"=1'-0" S-300



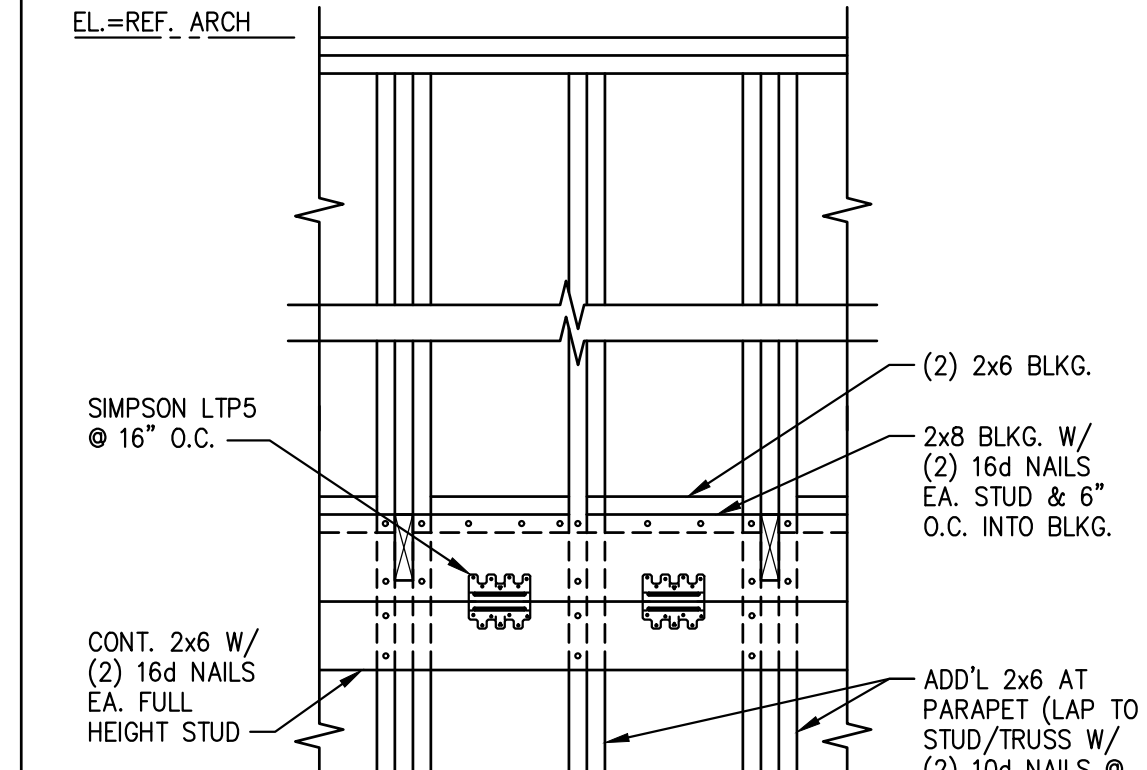
SECTION 10A
SCALE: 3/4"=1'-0" S-300



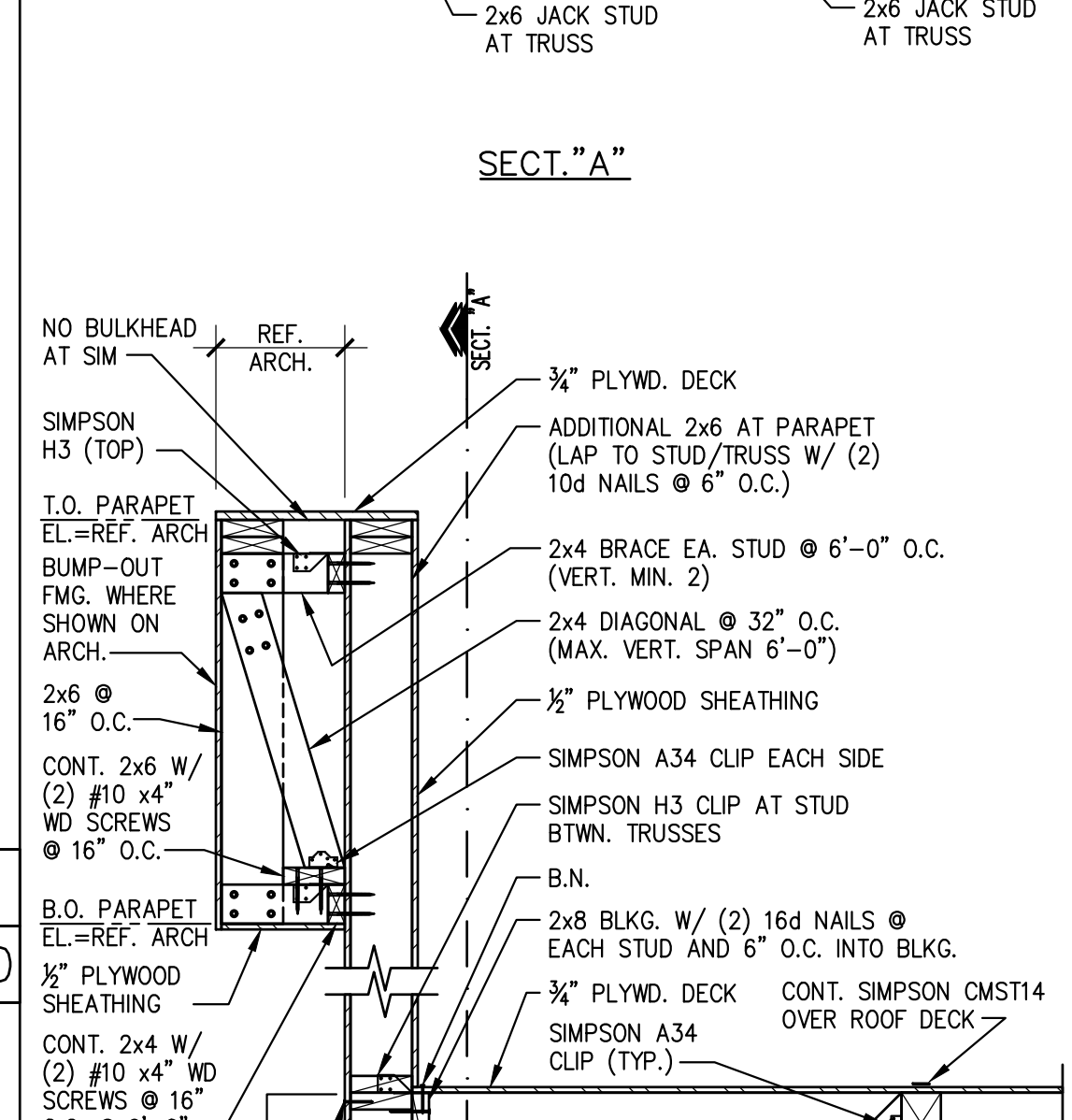
SECTION 10A
SCALE: 3/4"=1'-0" S-300



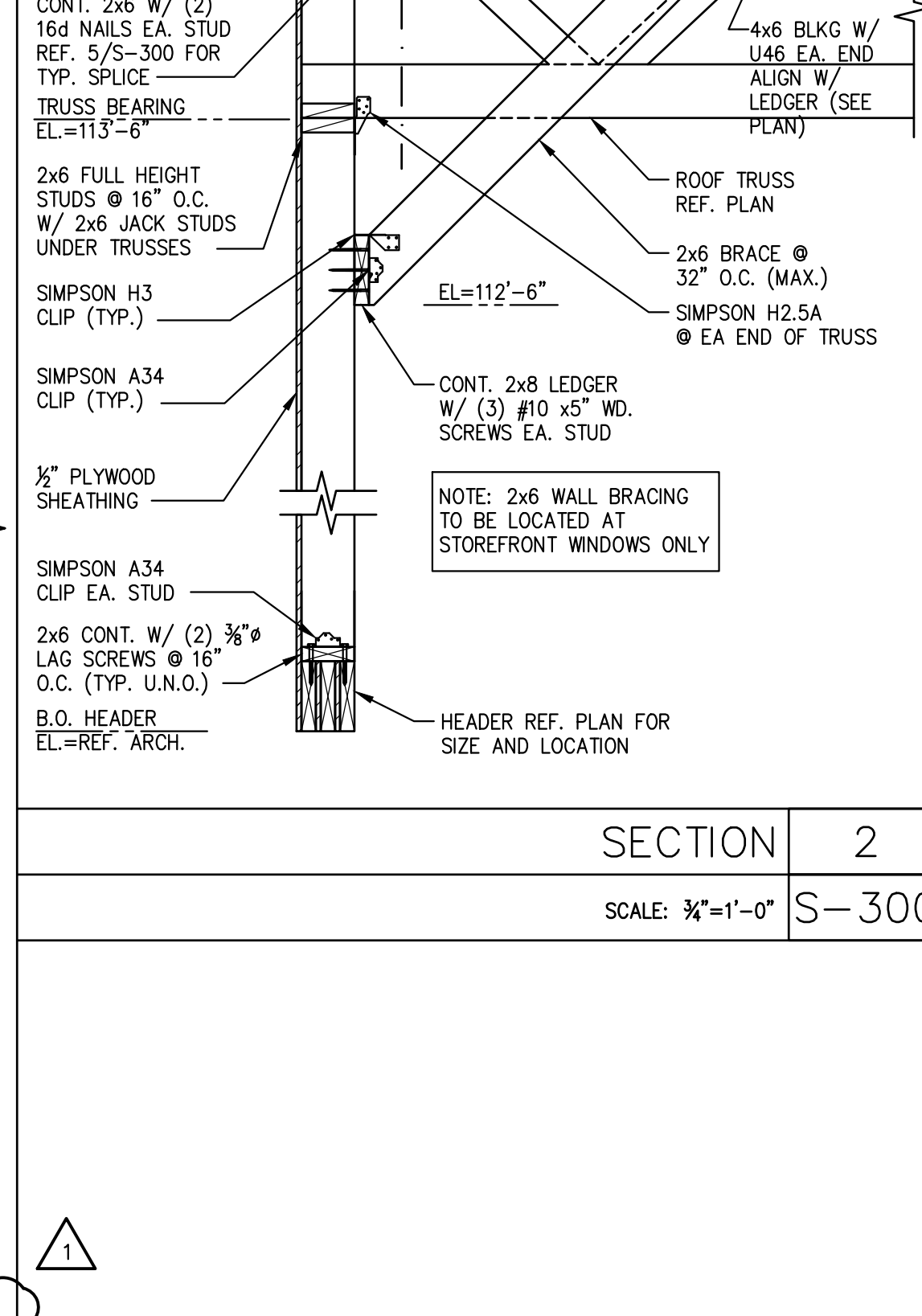
SECTION 10A
SCALE: 3/4"=1'-0" S-300



SECTION 10A
SCALE: 3/4"=1'-0" S-300



SECTION 10A
SCALE: 3/4"=1'-0" S-300



SECTION 10A
SCALE: 3/4"=1'-0" S-300

PANDA EXPRESS
 CHINESE KITCHEN

PANDA EXPRESS, INC.
 1683 Walnut Grove Ave.
 Rosemead, California 91770
 Telephone: 626.799.9898
 Facsimile: 626.372.8288

All ideas, designs, arrangement and plans indicated or represented by this drawing are the property of Panda Express Inc. and were created for use on this specific project. None of these ideas, designs, arrangements or plans may be used by or disclosed to any person, firm, or corporation without the written permission of Panda Express Inc.

REVISIONS:
 CIVIL REVISION LDH 12-16-2021
 DRIVE THRU UPDATE 01-14-2022

ISSUE DATE:
 PERMIT/BID ISSUE 09-20-2021

DRAWN BY:

PANDA PROJECT #: S8-21-D8118
 PANDA STORE #: D8118
 ARCH PROJECT #: 20185

James F. Turner Engineers, L.P.
 Consulting Engineers
 6340 Maplewood Road, #100
 Dallas, TX 75231
 214.750.2900
 JFT #67336
 P.E. LA C&A #4309

RONALD C. WHITTINGTON
 License No. 38025
 01-18-22

PANDA EXPRESS
 TRUE WARM & WELCOME
 911 N. SERVICE RD.
 RUSTON, LA 71270

S-300
 FRAMING SECTIONS
 TRUE WARM & WELCOME 2300 R5

PERMIT/BID SET