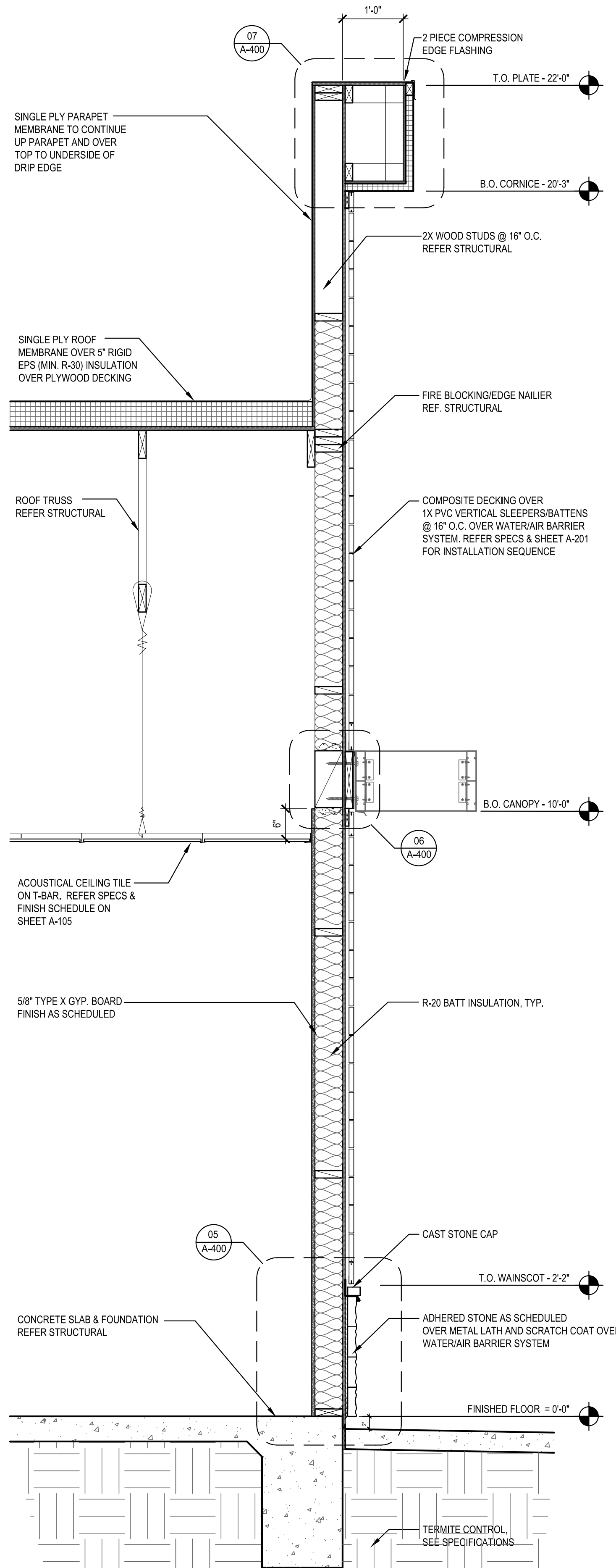
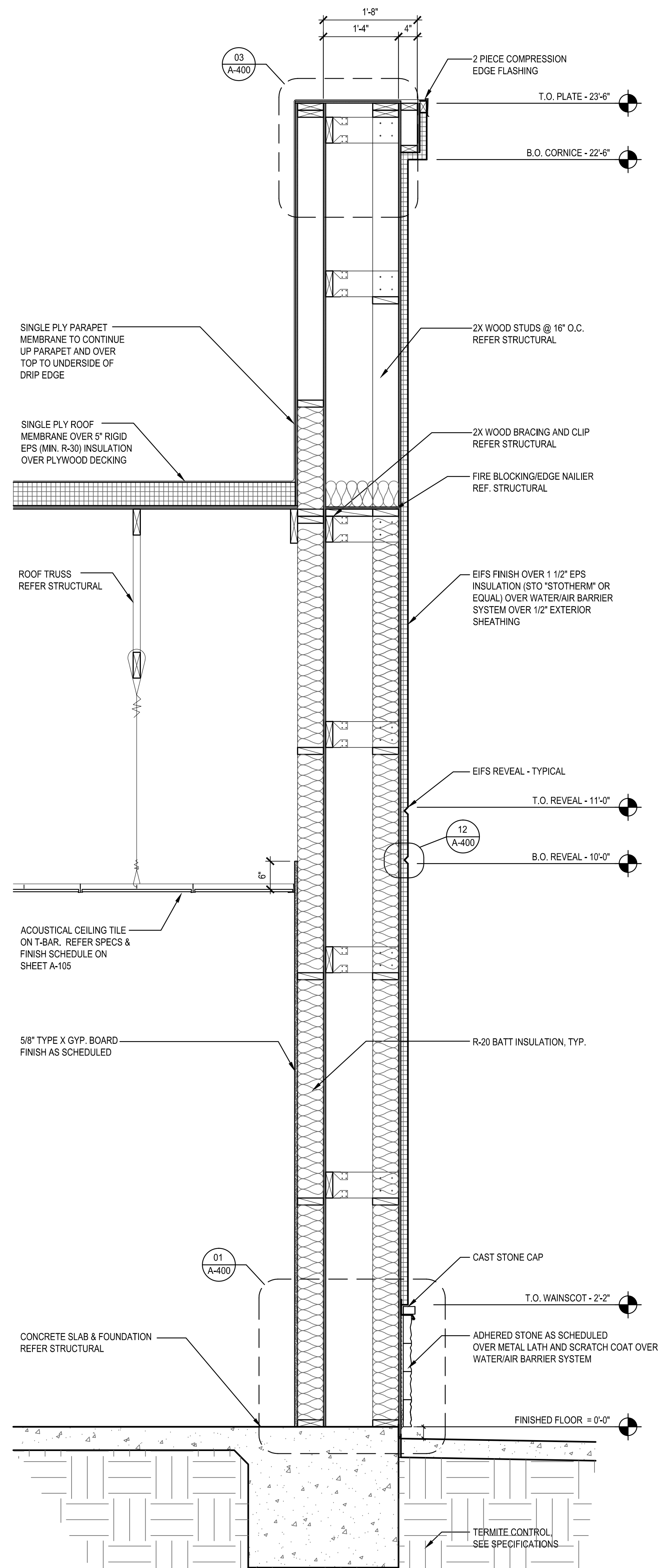


SECTION 1
Scale= 3/4" = 1'-0" A-301



SECTION 2
Scale= 3/4" = 1'-0" A-301



SECTION 3
Scale= 3/4" = 1'-0" A-301



PANDA RESTAURANT GROUP INC.
1683 Walnut Grove Ave.
Rosemead, California
91770
Telephone: 626.799.9898
Facsimile: 626.372.8288

All ideas, designs, arrangement and plans indicated or represented by this drawing are the property of Panda Express Inc. and were created for use on this specific project. None of these ideas, designs, arrangements or plans may be used by or disclosed to any person, firm, or corporation without the written permission of Panda Express Inc.

REVISIONS:		

ISSUE DATE:		
1ST	CHECKSET	09-23-2016
2ND	PERMIT SET	09-30-2016
3RD	BID SET	12-21-2016

DRAWN BY: SHANTIA RAESI

PANDA PROJECT #: S8-17-D5084
ARCH PROJECT #: 20160806

GreenbergFarrow
1430 West Peachtree St. NW, Suite 200
Atlanta, GA 30309
t: 404.601.4000

PROFESSIONAL SEAL

PANDA EXPRESS
SILVER BLUFF RD & PINE LOG RD
1065 PINE LOG ROAD
AIKEN, SC 29801

A-301
WALL SECTIONS